



# TAMAULIPAS

## ---RED FEDERAL LIBRE---

1 Acceso a Puente Internacional Reynosa - Pharr	MEX-002
2 Altamira - T. C. (Petrocel -Puerto Industrial Altamira)	MEX-080
3 Antigua Morelos - Ent. El Huizache	MEX-080
4 Cd. Valles - Cd. Victoria	MEX-085
5 Cd. Valles - Tampico	MEX-070
6 Cd. Victoria - Matamoros	MEX-101-180
7 Cd. Victoria - Soto La Marina	MEX-070
8 Ciudad Victoria - Monterrey	MEX-085
9 Corredor Internacional Reynosa	MEX
10 Ent. Tula - Cd. Victoria	MEX-101
11 Estación Manuel - T. C. (Cd. Victoria - Soto La Marina)	MEX-180
12 González - Llera de Canales	MEX-081
13 Ignacio Zaragoza - T. C. (Ciudad Victoria - Monterrey)	MEX-083
14 Las Urracas - T. C. (Matamoros - Reynosa)	MEX-097
15 Libramiento de Reynosa	MEX-002
16 Libramiento de San Fernando	MEX-101-180
17 Libramiento de San Germán	MEX-101-180
18 Libramiento de Santander Jiménez	MEX-101
19 Libramiento Estación Manuel - González	MEX-081
20 Libramiento General Francisco Villa	MEX-101-180
21 Matamoros - Playa Lauro Villar	MEX-002
22 Matamoros - Reynosa	MEX-002
23 Monterrey - Mier	MEX-054
24 Monterrey - Nuevo Laredo (Libre)	MEX-085
25 Monterrey - Reynosa (Libre)	MEX-040
26 Paras - Nueva Ciudad Guerrero	MEX-030
27 Petrocel - Puerto Industrial Altamira	MEX-080
28 Piedras Negras - Nuevo Laredo	MEX-002
29 Ramal a Puente Tampico	MEX-180
30 Ramal de Acceso a Puente Anzaldúas	MEX
31 Ramal de Acceso al Puente Internacional Laredo III	MEX
32 Reynosa - Nuevo Laredo	MEX-002
33 Soto La Marina - La Coma	MEX-180
34 Tampico - Cd. Mante	MEX-080
35 Tuxpam - Tampico	MEX-180
36 Viaducto de Reynosa	MEX

## ---RED FEDERAL DE CUOTA---

37 Libramiento de Reynosa Sur II	MEX-040D
38 Libramiento Poniente de Tampico (Cuota)	MEX-070D
39 Matamoros - Reynosa (Cuota)	MEX-002D

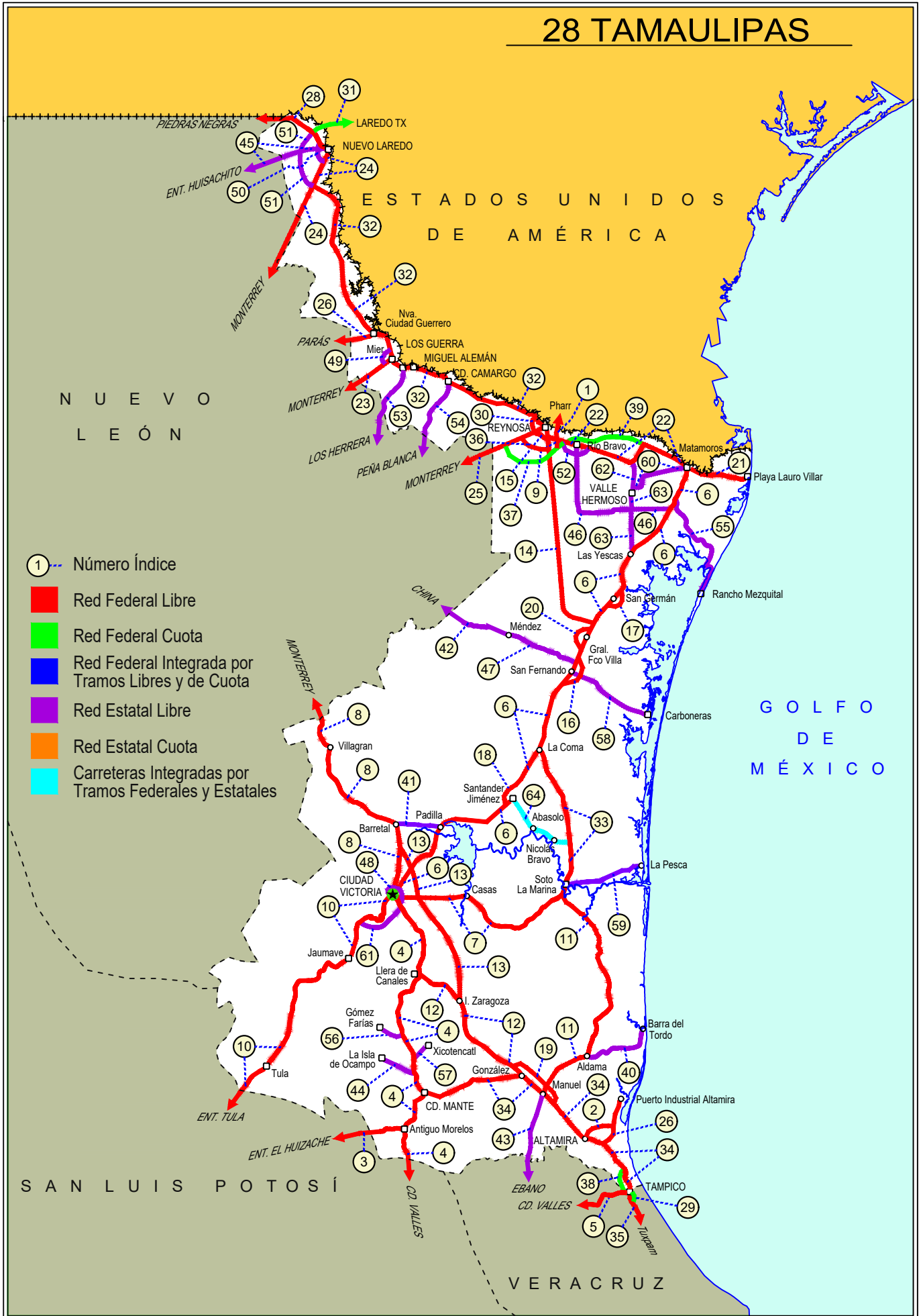
## ---RED ESTATAL LIBRE---

40 Aldama - Barra El Tordo	TAM
41 Barretal - Nueva Villa de Padilla	TAM-001
42 China - Méndez	NL-TAM
43 Ébano - Estación Manuel	SLP-TAM
44 El Limón - Ocampo	TAM-019
45 Ent. Huisachito - Nuevo Laredo	NL-001-TAM
46 Ent. Las Blancas - Río Bravo	TAM-003
47 La Joya - Méndez	TAM
48 Libramiento de Cd. Victoria	TAM
49 Libramiento de Mier	TAMPS
50 Libramiento de Nuevo Laredo	TAM
51 Libramiento de Nuevo Laredo II	TAM
52 Libramiento de Río Bravo	TAM
53 Los Guerra - Los Herreras	TAM-NL
54 Peña Blanca - Cd. Camargo	NL-TAM
55 Potrero Nuevo - Rancho El Mezquital	TAM
56 Ramal a Gómez Farías	TAM-020
57 Ramal a Xicoténcatl	TAM
58 San Fernando - Carboneras	TAM
59 Soto La Marina - La Pesca	TAM-070
60 T. C. (Valle Hermoso - Empalme) - Matamoros	TAM-005
61 T. C. Libramiento Cd. Victoria - San Antonio	TAM-126
62 Valle Hermoso - Empalme	TAM-004
63 Valle Hermoso - Las Yescas	TAM

## ---CARRETERAS INTEGRADAS POR TRAMOS FEDERALES Y ESTATALES---

64 Santander Jiménez - Ent. El Ojito	MEX-107-TAM
--------------------------------------	-------------

# 28 TAMAULIPAS





TAMAULIPAS

1 CARR: Acceso a Puente Internacional Reynosa - Pharr

CLAVE:

RUTA: MEX-002

AÑO: 2023

LUGAR	ESTACION				CLASIFICACION VEHICULAR EN PORCIENTO													COORDENADAS		
	KM	TE	SC	TDPA	M	A	B	C2	C3	T3S2	T3S3	T3S2R4	OTROS	A	B	C	K'	D	LATITUD	LONGITUD
T. C. Matamoros - Reynosa	0.00	3	1	9847	5.0	52.4	2.7	2.5	4.6	29.6	1.8	1.0	0.4	57.4	2.7	39.9	0.114	0.501	26.023737	-98.208322
T. C. Matamoros - Reynosa	0.00	3	2	9820	4.7	52.5	2.8	2.4	4.9	29.4	1.6	1.3	0.4	57.2	2.8	40.0	0.094	0.501	26.023741	-98.208411
Puente Internacional Reynosa - Pharr	3.10																			

2 CARR: Altamira - T. C. (Petrocel -Puerto Industrial Altamira)

CLAVE:

RUTA: MEX-080

AÑO: 2023

LUGAR	ESTACION				CLASIFICACION VEHICULAR EN PORCIENTO													COORDENADAS		
	KM	TE	SC	TDPA	M	A	B	C2	C3	T3S2	T3S3	T3S2R4	OTROS	A	B	C	K'	D	LATITUD	LONGITUD
Altamira	0.00	3	1	14062	7.9	84.8	0.6	2.1	1.8	1.4	0.3	0.9	0.2	92.7	0.6	6.7	0.091	0.527	22.400590	-97.919437
Altamira	0.00	3	2	12624	8.3	84.0	0.7	2.3	2.0	1.2	0.3	1.0	0.2	92.3	0.7	7.0	0.126	0.527	22.400823	-97.919265
T. C. (Petrocel -Puerto Industrial Altamira)	3.10																			

3 CARR: Antigua Morelos - Ent. El Huizache

CLAVE: 00136

RUTA: MEX-080

AÑO: 2023

LUGAR	ESTACION				CLASIFICACION VEHICULAR EN PORCIENTO													COORDENADAS		
	KM	TE	SC	TDPA	M	A	B	C2	C3	T3S2	T3S3	T3S2R4	OTROS	A	B	C	K'	D	LATITUD	LONGITUD
Antigua Morelos	0.00	3	0	2901	15.3	78.3	1.1	1.8	1.1	1.0	0.5	0.7	0.2	93.6	1.1	5.3	0.097	0.501	22.553918	-99.090692
Nuevo Morelos	19.28	1	0	1339	7.1	80.7	2.6	3.4	2.5	2.0	0.6	0.7	0.4	87.8	2.6	9.6	0.112	0.508	22.540712	-99.212718
Lim. Edos. Term. Tamps. Ppia. S. L. P.	25.00																			
El Naranjo	32.00	1	0	4753	5.9	81.0	1.6	6.0	2.8	1.6	0.3	0.6	0.2	86.9	1.6	11.5	0.093	0.504	22.532479	-99.307324
El Naranjo	32.00	3	0	2364	7.5	82.7	1.4	4.8	1.2	1.6	0.4	0.3	0.1	90.2	1.4	8.4	0.093	0.504	22.517970	-99.335455
Cd. del Maíz	86.00	3	0	1532	2.9	87.2	1.9	4.2	1.5	1.8	0.2	0.2	0.1	90.1	1.9	8.0	0.115	0.502	22.418733	-99.627314
T. Der. Tula	141.21	3	0	2711	1.1	40.5	2.9	4.6	3.0	23.8	6.4	16.8	0.9	41.6	2.9	55.5	0.062	0.512	22.736996	-99.978292
T. C. San Luis Potosí - Matehuala (Ent. El Huizache)	198.83	1	0	2989	3.5	47.3	3.2	5.4	3.4	19.2	4.5	12.8	0.7	50.8	3.2	46.0	0.065	0.504	22.930012	-100.450302

4 CARR: Cd. Valles - Cd. Victoria

CLAVE: 00509

RUTA: MEX-085

AÑO: 2023

LUGAR	ESTACION				CLASIFICACION VEHICULAR EN PORCIENTO													COORDENADAS		
	KM	TE	SC	TDPA	M	A	B	C2	C3	T3S2	T3S3	T3S2R4	OTROS	A	B	C	K'	D	LATITUD	LONGITUD
Cd. Valles	0.00	3	0	10296	4.4	86.4	2.2	4.8	0.7	0.6	0.3	0.4	0.2	90.8	2.2	7.0	0.082	0.504	22.007370	-99.004538
Lim. Edos. Term. S. L. P. Ppia. Tamps.	50.40																			
Antigua Morelos	66.90	1	0	2773	9.4	80.5	3.3	1.7	1.3	1.7	0.3	1.6	0.2	89.9	3.3	6.8	0.088	0.505	22.548421	-99.078350
Antigua Morelos	66.90	3	0	3815	6.9	78.9	4.7	2.3	1.9	2.5	0.8	1.6	0.4	85.8	4.7	9.5	0.086	0.547	22.560752	-99.077947
Cd. Mante	98.00	1	0	9088	10.6	79.5	1.9	3.9	1.8	1.3	0.3	0.5	0.2	90.1	1.9	8.0	0.093	0.506	22.712021	-98.988827
T. Izq. Ocampo	110.00	3	0	4458	11.7	79.7	2.8	2.8	1.5	0.6	0.3	0.4	0.2	91.4	2.8	5.8	0.095	0.500	22.838679	-99.024339

TAMAULIPAS

4 CARR: Cd. Valles - Cd. Victoria

CLAVE: 00509

RUTA: MEX-085

AÑO: 2023

LUGAR	ESTACION				CLASIFICACION VEHICULAR EN PORCIENTO										COORDENADAS					
	KM	TE	SC	TDPA	M	A	B	C2	C3	T3S2	T3S3	T3S2R4	OTROS	A	B	C	K'	D	LATITUD	LONGITUD
T. Izq. Gómez Farías	132.84	3	0	2071	11.0	77.5	3.2	6.1	0.6	1.3	0.1	0.2	0.0	88.5	3.2	8.3	0.086	0.503	23.030359	-99.093799
T. Izq. Llera de Canales	170.00	3	0	4298	1.3	91.7	1.3	4.3	0.7	0.3	0.3	0.1	0.0	93.0	1.3	5.7	0.093	0.506	23.310469	-99.017224
T. Der. González	172.50	3	0	2965	2.1	83.9	3.9	5.6	1.1	1.6	0.9	0.9	0.0	86.0	3.9	10.1	0.116	0.529	23.318160	-98.998111
Cd. Victoria	232.00	1	0	3297	1.4	83.0	4.3	6.6	2.1	1.5	0.9	0.1	0.1	84.4	4.3	11.3	0.089	0.501	23.659913	-99.096587

5 CARR: Cd. Valles - Tampico

CLAVE: 00138

RUTA: MEX-070

AÑO: 2023

LUGAR	ESTACION				CLASIFICACION VEHICULAR EN PORCIENTO										COORDENADAS					
	KM	TE	SC	TDPA	M	A	B	C2	C3	T3S2	T3S3	T3S2R4	OTROS	A	B	C	K'	D	LATITUD	LONGITUD
Cd. Valles	0.00	3	0	8786	3.9	77.3	1.7	8.8	3.8	2.1	1.1	0.8	0.5	81.2	1.7	17.1	0.078	0.508	21.976029	-98.958665
T. Der. Santa Elena	15.25	3	0	5669	4.2	76.8	2.5	8.8	2.5	2.3	1.3	1.3	0.3	81.0	2.5	16.5	0.076	0.530	21.961360	-98.877664
Tamuín	29.60	1	0	5508	3.5	74.9	2.2	10.0	2.2	3.7	1.6	1.4	0.5	78.4	2.2	19.4	0.077	0.504	21.998119	-98.781933
T. C. Rayón - Ent. Tamuín (Cuota)	34.40	1	0	4366	9.4	72.3	2.5	3.9	3.9	3.1	1.7	2.6	0.6	81.7	2.5	15.8	0.092	0.511	22.002449	-98.745308
T. C. Rayón - Ent. Tamuín (Cuota)	34.40	3	1	3197	7.1	66.8	5.0	4.6	3.0	6.0	2.2	4.4	0.9	73.9	5.0	21.1	0.080	0.501	22.010469	-98.729871
T. C. Rayón - Ent. Tamuín (Cuota)	34.40	3	2	3185	7.0	66.9	5.1	4.5	3.0	5.7	2.3	4.6	0.9	73.9	5.1	21.0	0.073	0.501	22.010649	-98.729916
Ébano	79.00	1	0	11300	8.8	74.8	2.4	2.6	1.1	4.0	1.0	4.4	0.9	83.6	2.4	14.0	0.075	0.502	22.214249	-98.391265
Ébano	79.00	3	0	6915	7.3	65.5	6.6	4.4	2.8	4.0	2.9	5.7	0.8	72.8	6.6	20.6	0.076	0.505	22.211588	-98.360126
Lim. Edos. Term. S. L. P. Ppia. Ver.	83.57																			
T. Der. Pánuco	103.00	1	0	7461	5.3	74.6	2.6	4.2	2.3	3.5	1.7	4.9	0.9	79.9	2.6	17.5	0.072	0.507	22.155744	-98.155109
T. Der. Pánuco	103.00	3	0	9021	6.6	73.4	3.3	4.4	2.2	3.8	1.7	3.7	0.9	80.0	3.3	16.7	0.093	0.523	22.158993	-98.148897
T. C. Anáhuac - El Prieto	128.40	1	1	5020	4.6	77.7	3.3	3.9	1.7	3.1	1.4	3.4	0.9	82.3	3.3	14.4	0.108	0.509	22.213464	-97.953230
T. C. Anáhuac - El Prieto	128.40	1	2	5213	4.4	77.0	3.3	4.1	1.8	3.3	1.6	3.6	0.9	81.4	3.3	15.3	0.102	0.509	22.213564	-97.953194
T. C. Anáhuac - El Prieto	128.40	3	1	7964	4.1	70.1	3.2	6.2	2.5	6.4	3.1	3.5	0.9	74.2	3.2	22.6	0.083	0.503	22.216195	-97.941477
T. C. Anáhuac - El Prieto	128.40	3	2	7863	4.0	70.5	3.6	6.0	2.3	6.2	2.9	3.6	0.9	74.5	3.6	21.9	0.087	0.503	22.218311	-97.933031
Lim. Edos. Term. Ver. Ppia. Tamps.	133.81																			
Tampico	138.00	1	1	11226	5.8	72.0	2.2	6.9	1.7	4.6	1.9	4.0	0.9	77.8	2.2	20.0	0.078	0.507	22.226837	-97.894215
Tampico	138.00	1	2	10905	5.6	71.8	2.4	6.9	1.9	4.8	1.9	3.8	0.9	77.4	2.4	20.2	0.095	0.507	22.226931	-97.894236

6 CARR: Cd. Victoria - Matamoros

CLAVE: 28139

RUTA: MEX-101-180

AÑO: 2023

LUGAR	ESTACION				CLASIFICACION VEHICULAR EN PORCIENTO										COORDENADAS					
	KM	TE	SC	TDPA	M	A	B	C2	C3	T3S2	T3S3	T3S2R4	OTROS	A	B	C	K'	D	LATITUD	LONGITUD
Cd. Victoria	0.00																			
X. C. Libramiento de Cd. Victoria	5.00	3	1	9634	5.6	90.3	1.1	1.1	0.7	0.6	0.1	0.4	0.1	95.9	1.1	3.0	0.085	0.502	23.767718	-99.111801
X. C. Libramiento de Cd. Victoria	5.00	3	2	9695	5.1	91.1	0.9	1.1	0.6	0.6	0.2	0.3	0.1	96.2	0.9	2.9	0.086	0.502	23.767757	-99.111876

TAMAULIPAS

6 CARR: Cd. Victoria - Matamoros

CLAVE: 28139

RUTA: MEX-101-180

AÑO: 2023

LUGAR	ESTACION				CLASIFICACION VEHICULAR EN PORCIENTO														COORDENADAS	
	KM	TE	SC	TDPA	M	A	B	C2	C3	T3S2	T3S3	T3S2R4	OTROS	A	B	C	K'	D	LATITUD	LONGITUD
X. C. Ignacio Zaragoza - T. C. (Ciudad Victoria - Monterrey)	15.72	3	0	8280	2.8	71.4	4.3	3.5	1.8	9.6	1.8	4.1	0.7	74.2	4.3	21.5	0.082	0.506	23.860024	-99.047982
T. Izq. Barretal	46.50	1	0	7516	2.8	68.9	4.5	2.9	3.4	10.1	1.9	4.8	0.7	71.7	4.5	23.8	0.085	0.505	24.037975	-98.904699
T. Der. Las Juntas	80.05	1	0	6554	2.5	71.0	3.9	2.7	1.1	11.0	2.0	5.1	0.7	73.5	3.9	22.6	0.085	0.505	24.110816	-98.608273
Santander Jiménez	97.00	1	0	6987	6.0	63.0	3.7	3.8	1.0	14.1	1.7	5.7	1.0	69.0	3.7	27.3	0.079	0.505	24.202279	-98.495446
Santander Jiménez	97.00	3	0	6521	4.0	69.6	3.4	2.3	0.9	11.5	1.9	5.7	0.7	73.6	3.4	23.0	0.084	0.512	24.235943	-98.477376
T. Der. Soto La Marina	129.00	3	1	3468	2.6	73.0	4.4	3.4	1.0	7.8	2.4	4.3	1.1	75.6	4.4	20.0	0.098	0.522	24.470698	-98.340443
T. Der. Soto La Marina	129.00	3	2	3174	3.6	70.3	4.9	3.6	1.0	8.6	2.9	4.2	0.9	73.9	4.9	21.2	0.132	0.522	24.470706	-98.340515
Las Norias	145.80	3	0	7402	1.6	66.4	3.7	4.0	1.0	13.6	2.5	6.4	0.8	68.0	3.7	28.3	0.092	0.527	24.627547	-98.293256
T. Libramiento de San Fernando Sur	162.60																			
San Fernando	175.00	3	0	4220	3.4	88.2	2.9	2.1	1.0	0.6	0.7	0.8	0.3	91.6	2.9	5.5	0.091	0.516	24.863159	-98.139730
T. C. Libramiento de San Fernando Norte	187.00	3	0	11223	2.3	69.9	2.9	7.0	0.7	9.5	2.2	4.7	0.8	72.2	2.9	24.9	0.076	0.526	24.949696	-98.104612
T. Libramiento General Francisco Villa Sur	193.60																			
T. Libramiento General Francisco Villa Norte	199.20																			
T. Izq. Reynosa	202.00	1	0	9162	2.3	68.5	3.7	7.0	0.6	10.7	1.7	4.7	0.8	70.8	3.7	25.5	0.092	0.518	25.052148	-98.070920
T. Izq. Reynosa	202.00	3	0	4955	2.3	79.5	2.9	2.5	0.9	4.7	2.0	4.4	0.8	81.8	2.9	15.3	0.080	0.507	25.079040	-98.062056
T. Der. Los Vergeles	220.00	1	0	4826	2.6	75.8	3.6	5.3	0.5	5.6	1.9	3.8	0.9	78.4	3.6	18.0	0.095	0.541	25.178802	-97.960110
T. Libramiento de San Germán Sur	223.60																			
T. Libramiento de San Germán Norte	226.90																			
Santa Teresa	233.00	1	0	4594	1.7	77.3	4.0	7.4	0.8	3.3	1.2	3.4	0.9	79.0	4.0	17.0	0.095	0.540	25.268710	-97.868271
T. Izq. Valle Hermoso	254.50	1	0	5507	1.7	79.9	3.0	4.8	0.9	4.2	1.8	2.9	0.8	81.6	3.0	15.4	0.087	0.540	25.439714	-97.822929
T. Izq. Valle Hermoso	254.50	3	0	4165	1.4	80.0	3.4	4.5	1.5	4.6	1.4	2.5	0.7	81.4	3.4	15.2	0.094	0.511	25.454734	-97.812812
T. Izq. Jarita	286.00	3	1	3208	1.3	85.4	2.0	4.0	0.8	3.0	0.8	2.1	0.6	86.7	2.0	11.3	0.107	0.514	25.667468	-97.600344
T. Izq. Jarita	286.00	3	2	3392	1.4	84.5	2.2	4.0	0.8	3.1	1.0	2.5	0.5	85.9	2.2	11.9	0.098	0.514	25.667513	-97.600424
T. C. Potrero Nuevo - Rancho El Mezquital	293.50	3	1	4279	1.8	85.9	2.1	4.5	0.9	2.4	0.5	1.4	0.5	87.7	2.1	10.2	0.134	0.513	25.717974	-97.570225
T. C. Potrero Nuevo - Rancho El Mezquital	293.50	3	2	4507	1.8	86.0	2.1	4.4	0.9	2.3	0.4	1.5	0.6	87.8	2.1	10.1	0.097	0.513	25.718347	-97.570041
Matamoros	312.00	1	1	5636	1.6	88.3	1.7	3.2	1.2	1.8	0.5	1.4	0.3	89.9	1.7	8.4	0.090	0.520	25.763771	-97.542801
Matamoros	312.00	1	2	6100	1.4	88.7	1.8	3.3	1.1	2.0	0.5	0.8	0.4	90.1	1.8	8.1	0.089	0.520	25.763822	-97.542904

7 CARR: Cd. Victoria - Soto La Marina

CLAVE: 28009

RUTA: MEX-070

AÑO: 2023

LUGAR	ESTACION				CLASIFICACION VEHICULAR EN PORCIENTO														COORDENADAS	
	KM	TE	SC	TDPA	M	A	B	C2	C3	T3S2	T3S3	T3S2R4	OTROS	A	B	C	K'	D	LATITUD	LONGITUD
Cd. Victoria	0.00	3	1	5467	4.4	87.2	2.2	2.2	1.1	1.3	0.3	1.1	0.2	91.6	2.2	6.2	0.089	0.509	23.718727	-99.071126
Cd. Victoria	0.00	3	2	5672	4.4	87.0	2.2	2.4	1.1	1.2	0.4	1.1	0.2	91.4	2.2	6.4	0.111	0.509	23.718772	-99.071127
Casas	40.00																			

TAMAULIPAS

7 CARR : Cd. Victoria - Soto La Marina

CLAVE: 28009

RUTA: MEX-070

AÑO : 2023

LUGAR	ESTACION				CLASIFICACION VEHICULAR EN PORCIENTO														COORDENADAS	
	KM	TE	SC	TDPA	M	A	B	C2	C3	T3S2	T3S3	T3S2R4	OTROS	A	B	C	K'	D	LATITUD	LONGITUD
Soto La Marina	116.80	1	0	5002	4.4	75.8	1.8	8.6	1.3	4.7	1.5	1.0	0.9	80.2	1.8	18.0	0.083	0.506	23.758550	-98.207356

8 CARR : Ciudad Victoria - Monterrey

CLAVE: 00462

RUTA: MEX-085

AÑO : 2023

LUGAR	ESTACION				CLASIFICACION VEHICULAR EN PORCIENTO														COORDENADAS	
	KM	TE	SC	TDPA	M	A	B	C2	C3	T3S2	T3S3	T3S2R4	OTROS	A	B	C	K'	D	LATITUD	LONGITUD
Cd. Victoria (Lateral)	0.00	3	1	980	10.5	81.7	1.2	4.1	1.2	0.7	0.4	0.2	0.0	92.2	1.2	6.6	0.092	0.512	23.778040	-99.136570
Cd. Victoria (Central)	0.00	3	1	6539	10.0	81.7	1.6	2.0	2.1	0.9	0.2	1.4	0.1	91.7	1.6	6.7	0.088	0.525	23.777893	-99.136663
Cd. Victoria (Central)	0.00	3	2	7239	10.0	81.6	1.8	2.0	1.9	0.9	0.2	1.5	0.1	91.6	1.8	6.6	0.092	0.525	23.778306	-99.136689
Cd. Victoria (Lateral)	0.00	3	2	935	10.2	83.0	1.0	3.9	1.1	0.5	0.2	0.1	0.0	93.2	1.0	5.8	0.106	0.512	23.778260	-99.136777
T. Der. Güemez	19.60	3	0	6059	3.9	78.2	4.0	11.1	0.8	1.1	0.2	0.6	0.1	82.1	4.0	13.9	0.097	0.507	23.915671	-99.112366
T. Izq. Santa Engracia	27.35	3	0	10692	1.3	68.1	4.8	7.2	1.5	7.1	2.2	6.8	1.0	69.4	4.8	25.8	0.093	0.514	23.997099	-99.110442
Barretal	39.00	3	0	8887	3.9	66.9	5.5	4.5	1.6	6.7	2.2	7.7	1.0	70.8	5.5	23.7	0.087	0.509	24.093649	-99.144929
T. Izq. Hidalgo y La Mesa	77.50	1	0	9633	4.9	65.3	5.9	4.1	1.7	6.9	2.2	8.0	1.0	70.2	5.9	23.9	0.089	0.500	24.248121	-99.429592
Villagrán	106.00	1	0	8477	4.4	65.4	5.4	4.0	2.0	7.4	2.2	8.2	1.0	69.8	5.4	24.8	0.096	0.501	24.463664	-99.496501
Villagrán	106.00	3	0	6231	3.1	66.9	6.3	5.1	2.0	6.7	2.1	6.8	1.0	70.0	6.3	23.7	0.090	0.505	24.481971	-99.505562
T. Izq. Villa Mainero	118.00	3	1	4437	3.3	66.2	5.4	3.6	1.9	8.0	2.6	8.0	1.0	69.5	5.4	25.1	0.099	0.513	24.581739	-99.539253
T. Izq. Villa Mainero	118.00	3	2	4668	3.0	67.1	5.1	3.3	2.2	8.0	2.3	8.0	1.0	70.1	5.1	24.8	0.094	0.513	24.581821	-99.539288
Lim. Edos. Term. Tamps. Ppia. N. L.	126.20																			
T. Libramiento de Linares Sur	152.50																			
Linares	154.00	1	0	11472	2.6	71.5	4.6	3.1	1.4	7.5	1.6	6.8	0.9	74.1	4.6	21.3	0.068	0.516	24.837970	-99.560192
Linares	154.00	3	1	8700	3.6	74.7	3.0	6.5	1.1	4.1	1.2	5.0	0.8	78.3	3.0	18.7	0.070	0.513	24.882674	-99.588177
Linares	154.00	3	2	8248	3.7	75.1	2.9	6.0	1.3	4.2	1.0	5.0	0.8	78.8	2.9	18.3	0.075	0.513	24.882596	-99.588279
T. Libramiento de Linares Norte	157.30																			
La Laja	171.00	3	1	7115	2.9	67.8	4.5	5.7	1.5	7.6	2.4	6.9	0.7	70.7	4.5	24.8	0.079	0.503	24.923025	-99.688648
La Laja	171.00	3	2	7044	2.8	69.7	4.9	5.1	1.6	7.2	2.3	5.6	0.8	72.5	4.9	22.6	0.085	0.503	24.922989	-99.688751
T. C. Libramiento de Montemorelos Sur	197.50	3	0	3969	3.2	75.5	2.5	12.4	1.7	2.7	0.9	0.7	0.4	78.7	2.5	18.8	0.077	0.505	25.129113	-99.808484
Montemorelos	205.00	3	1	13837	3.6	76.4	3.5	5.6	1.9	4.9	1.1	2.4	0.6	80.0	3.5	16.5	0.095	0.502	25.202245	-99.906285
Montemorelos	205.00	3	2	13717	3.5	75.8	3.4	6.0	1.7	5.3	1.2	2.5	0.6	79.3	3.4	17.3	0.089	0.502	25.202074	-99.906252
T. C. Libramiento de Montemorelos Norte	208.50	1	1	10464	3.1	75.3	3.6	5.0	1.8	5.2	1.3	3.8	0.9	78.4	3.6	18.0	0.086	0.506	25.191307	-99.882462
T. C. Libramiento de Montemorelos Norte	208.50	1	2	10225	3.1	75.2	3.5	5.4	1.9	5.2	1.3	3.5	0.9	78.3	3.5	18.2	0.102	0.506	25.191152	-99.882487
Allende	227.45	1	1	12890	1.3	79.8	2.2	8.0	1.6	3.5	1.0	2.1	0.5	81.1	2.2	16.7	0.090	0.504	25.254893	-99.990838
Allende	227.45	1	2	13106	1.3	77.7	2.5	9.2	1.7	3.6	1.1	2.2	0.7	79.0	2.5	18.5	0.080	0.504	25.254788	-99.990951
Allende	227.45	3	1	15239	3.4	83.6	2.6	3.0	1.6	2.8	0.7	1.8	0.5	87.0	2.6	10.4	0.079	0.521	25.299502	-100.048581
Allende	227.45	3	2	16607	3.4	83.6	2.6	3.0	1.6	2.8	0.7	1.8	0.5	87.0	2.6	10.4	0.068	0.521	25.295018	-100.049106



TAMAULIPAS

8 CARR: Ciudad Victoria - Monterrey

CLAVE: 00462

RUTA: MEX-085

AÑO: 2023

LUGAR	ESTACION				CLASIFICACION VEHICULAR EN PORCIENTO													COORDENADAS		
	KM	TE	SC	TDPA	M	A	B	C2	C3	T3S2	T3S3	T3S2R4	OTROS	A	B	C	K'	D	LATITUD	LONGITUD
El Cercado	249.00	1	1	26629	2.7	86.6	1.9	2.2	1.7	2.3	0.5	1.5	0.6	89.3	1.9	8.8	0.090	0.521	25.358250	-100.096268
El Cercado	249.00	1	2	24500	2.7	86.6	1.9	2.2	1.7	2.3	0.5	1.5	0.6	89.3	1.9	8.8	0.077	0.521	25.359305	-100.098284
T. Der. Las Huertas	257.00	3	1	33867	8.3	83.1	1.2	2.2	1.0	1.3	0.5	1.9	0.5	91.4	1.2	7.4	0.098	0.510	25.458118	-100.168027
T. Der. Las Huertas	257.00	3	2	32496	8.3	83.1	1.2	2.2	1.0	1.3	0.5	1.9	0.5	91.4	1.2	7.4	0.100	0.510	25.456386	-100.166812
T. Izq. el Barro	266.00	3	1	43797	4.8	88.2	0.8	1.9	1.2	1.5	0.6	0.7	0.3	93.0	0.8	6.2	0.087	0.505	25.533218	-100.215610
T. Izq. el Barro	266.00	3	2	44676	4.7	88.3	0.8	1.9	1.2	1.5	0.6	0.7	0.3	93.0	0.8	6.2	0.095	0.505	25.532783	-100.215439
La Estanzuela	274.82	3	1	67961	5.2	83.6	1.5	2.8	0.9	1.1	0.5	3.7	0.7	88.8	1.5	9.7	0.079	0.519	25.590347	-100.259732
La Estanzuela	274.82	3	2	62210	5.2	83.6	1.5	2.8	0.9	1.1	0.5	3.7	0.7	88.8	1.5	9.7	0.066	0.519	25.588961	-100.259147
Monterrey (Baja)	287.00	1	1	18509	6.3	83.1	0.8	6.6	1.3	0.6	0.4	0.6	0.3	89.4	0.8	9.8	0.077	0.501	25.603157	-100.266654
Monterrey (Alta)	287.00	1	1	64243	3.1	89.0	1.5	1.6	1.1	1.1	0.2	2.1	0.3	92.1	1.5	6.4	0.087	0.523	25.602763	-100.266601
Monterrey (Baja)	287.00	1	2	18439	6.2	83.2	0.8	6.6	1.3	0.6	0.4	0.6	0.3	89.4	0.8	9.8	0.080	0.501	25.602824	-100.266990
Monterrey (Alta)	287.00	1	2	71611	3.1	89.0	1.5	1.6	1.1	1.1	0.2	2.1	0.3	92.1	1.5	6.4	0.065	0.523	25.600110	-100.265397

9 CARR: Corredor Internacional Reynosa

CLAVE:

RUTA: MEX

AÑO: 2023

LUGAR	ESTACION				CLASIFICACION VEHICULAR EN PORCIENTO													COORDENADAS		
	KM	TE	SC	TDPA	M	A	B	C2	C3	T3S2	T3S3	T3S2R4	OTROS	A	B	C	K'	D	LATITUD	LONGITUD
T. C. Matamoros - Reynosa	0.00	1	0	2820	2.4	52.2	3.6	4.7	3.9	23.1	3.3	5.9	0.9	54.6	3.6	41.8	0.086	0.541	26.004399	-98.207298
T. Libramiento de Reynosa Sur II	7.48																			

10 CARR: Ent. Tula - Cd. Victoria

CLAVE: 00179

RUTA: MEX-101

AÑO: 2023

LUGAR	ESTACION				CLASIFICACION VEHICULAR EN PORCIENTO													COORDENADAS		
	KM	TE	SC	TDPA	M	A	B	C2	C3	T3S2	T3S3	T3S2R4	OTROS	A	B	C	K'	D	LATITUD	LONGITUD
T. C. Antiguo Morelos - El Huizache	0.00	3	0	3865	3.8	45.7	4.5	3.7	1.8	21.8	3.2	14.6	0.9	49.5	4.5	46.0	0.070	0.528	22.738082	-99.967929
Lim. Edos. Term. S. L. P. Ppia. Tamps.	2.40																			
T. Der. Tula (1º Acceso)	38.00	1	0	6779	2.3	51.4	4.5	5.0	2.4	18.2	3.1	12.2	0.9	53.7	4.5	41.8	0.060	0.520	22.979114	-99.737887
T. Der. Tula (2º Acceso)	41.95	3	0	4861	3.9	51.4	5.4	4.4	1.9	17.8	2.7	11.6	0.9	55.3	5.4	39.3	0.071	0.506	23.021091	-99.714022
Jaumave	112.68	1	0	6051	4.9	63.0	4.1	3.4	1.6	11.7	2.1	8.2	1.0	67.9	4.1	28.0	0.068	0.518	23.393694	-99.415780
Jaumave	112.68	3	0	6539	4.7	62.1	3.8	2.8	1.1	12.8	2.3	9.4	1.0	66.8	3.8	29.4	0.067	0.512	23.420606	-99.373232
T. Libramiento de Cd. Victoria	134.68																			
Cd. Victoria	180.00	1	1	3443	16.0	79.4	0.5	1.2	2.0	0.7	0.1	0.1	0.0	95.4	0.5	4.1	0.087	0.504	23.710993	-99.175922
Cd. Victoria	180.00	1	2	3497	16.8	78.4	0.4	1.0	2.1	0.8	0.2	0.2	0.1	95.2	0.4	4.4	0.086	0.504	23.711133	-99.175961

TAMAULIPAS

11 CARR: Estación Manuel - T. C. (Cd. Victoria - Soto La Marina)

CLAVE: 28294

RUTA: MEX-180

AÑO: 2023

LUGAR	ESTACION				CLASIFICACION VEHICULAR EN PORCIENTO													COORDENADAS		
	KM	TE	SC	TDPA	M	A	B	C2	C3	T3S2	T3S3	T3S2R4	OTROS	A	B	C	K'	D	LATITUD	LONGITUD
Estación Manuel	0.00	3	0	3456	4.6	73.8	5.0	4.8	2.0	5.7	1.9	1.8	0.4	78.4	5.0	16.6	0.078	0.512	22.762498	-98.309907
T. Der. Aldama	36.00	3	0	4728	4.4	82.2	2.6	3.4	1.4	3.3	1.3	1.1	0.3	86.6	2.6	10.8	0.077	0.506	22.936293	-98.077577
Esperanza	69.00	3	0	2558	4.8	74.2	4.4	3.8	1.8	6.9	1.8	1.8	0.5	79.0	4.4	16.6	0.081	0.519	23.179306	-97.952271
San José de Las Rusias	116.25	3	0	3115	2.5	77.0	6.1	3.5	1.4	5.9	1.6	1.6	0.4	79.5	6.1	14.4	0.092	0.510	23.562116	-98.042686
T. C. (Cd. Victoria - S. La Marina)	145.00	1	0	3097	3.2	74.7	4.5	7.9	1.4	5.0	1.3	1.6	0.4	77.9	4.5	17.6	0.093	0.520	23.722960	-98.216724

12 CARR: González - Llera de Canales

CLAVE: 28578

RUTA: MEX-081

AÑO: 2023

LUGAR	ESTACION				CLASIFICACION VEHICULAR EN PORCIENTO													COORDENADAS		
	KM	TE	SC	TDPA	M	A	B	C2	C3	T3S2	T3S3	T3S2R4	OTROS	A	B	C	K'	D	LATITUD	LONGITUD
González	0.00	3	0	7156	4.9	55.7	5.9	3.1	1.3	11.0	3.4	13.8	0.9	60.6	5.9	33.5	0.075	0.516	22.846185	-98.452930
Estación Ignacio Zaragoza	58.50	1	0	7008	4.2	64.0	5.4	3.2	1.4	8.2	2.6	10.1	0.9	68.2	5.4	26.4	0.094	0.512	23.181706	-98.771726
T. C. Cd. Valles - Cd. Victoria	89.00	1	0	2091	6.0	91.2	0.2	1.1	0.3	0.1	0.3	0.1	0.7	97.2	0.2	2.6	0.095	0.502	23.316561	-98.994051

13 CARR: Ignacio Zaragoza - T. C. (Ciudad Victoria - Monterrey)

CLAVE: 28625

RUTA: MEX-083

AÑO: 2023

LUGAR	ESTACION				CLASIFICACION VEHICULAR EN PORCIENTO													COORDENADAS		
	KM	TE	SC	TDPA	M	A	B	C2	C3	T3S2	T3S3	T3S2R4	OTROS	A	B	C	K'	D	LATITUD	LONGITUD
T. C. González - Llera de Canales	0.00	3	0	8779	3.5	62.8	5.7	7.7	1.1	7.0	2.2	9.1	0.9	66.3	5.7	28.0	0.114	0.521	23.208085	-98.787080
X. C. Cd. Victoria - Soto La Marina	63.45	3	0	7948	4.2	55.5	4.9	2.9	1.3	15.4	3.2	11.8	0.8	59.7	4.9	35.4	0.098	0.503	23.726251	-98.998598
X. C. Cd. Victoria - Matamoros	79.00	3	0	5733	3.3	61.9	5.3	2.9	1.4	10.6	2.9	11.1	0.6	65.2	5.3	29.5	0.106	0.511	23.854971	-99.056146
T. C. Ciudad Victoria - Monterrey	94.30	1	0	5696	3.9	61.0	5.5	3.5	1.2	10.3	2.9	10.9	0.8	64.9	5.5	29.6	0.104	0.517	23.949453	-99.094037

14 CARR: Las Urracas - T. C. (Matamoros - Reynosa)

CLAVE: 28029

RUTA: MEX-097

AÑO: 2023

LUGAR	ESTACION				CLASIFICACION VEHICULAR EN PORCIENTO													COORDENADAS		
	KM	TE	SC	TDPA	M	A	B	C2	C3	T3S2	T3S3	T3S2R4	OTROS	A	B	C	K'	D	LATITUD	LONGITUD
T. C. Cd. Victoria - Matamoros	0.00	3	0	5248	0.8	62.0	3.0	9.8	1.1	14.3	2.1	6.1	0.8	62.8	3.0	34.2	0.079	0.501	25.081154	-98.082876
La Nutria	41.00	1	0	4497	0.5	64.3	4.2	11.4	0.9	12.4	1.7	3.7	0.9	64.8	4.2	31.0	0.079	0.507	25.380766	-98.218327
Santo Domingo	91.50	1	0	6592	2.2	63.8	3.6	6.6	1.5	14.0	2.0	5.4	0.9	66.0	3.6	30.4	0.074	0.500	25.827285	-98.259485
T. C. Matamoros - Reynosa	113.25	1	1	4734	1.5	85.7	3.0	2.3	1.2	3.3	1.1	1.1	0.8	87.2	3.0	9.8	0.084	0.500	25.942361	-98.270458
T. C. Matamoros - Reynosa	113.25	1	2	4727	1.3	86.1	3.0	2.5	1.2	3.2	1.0	0.9	0.8	87.4	3.0	9.6	0.113	0.500	25.942351	-98.270503

TAMAULIPAS

15 CARR: Libramiento de Reynosa

CLAVE: 28008

RUTA: MEX-002

AÑO: 2023

LUGAR	ESTACION				CLASIFICACION VEHICULAR EN PORCIENTO													COORDENADAS		
	KM	TE	SC	TDPA	M	A	B	C2	C3	T3S2	T3S3	T3S2R4	OTROS	A	B	C	K'	D	LATITUD	LONGITUD
T. C. Matamoros - Reynosa	0.00	3	1	48349	3.0	85.2	1.7	2.7	2.3	2.8	0.8	1.0	0.5	88.2	1.7	10.1	0.081	0.520	26.043374	-98.295696
T. C. Matamoros - Reynosa	0.00	3	2	44214	3.3	84.5	1.9	2.9	2.0	3.0	0.7	1.1	0.6	87.8	1.9	10.3	0.086	0.520	26.043260	-98.297288
T. C. Monterrey - Reynosa	10.00	1	1	38841	2.9	86.6	1.5	2.7	1.7	2.1	0.4	1.6	0.5	89.5	1.5	9.0	0.075	0.507	26.048864	-98.351676
T. C. Monterrey - Reynosa	10.00	1	2	37648	2.8	87.2	1.5	2.6	1.5	2.0	0.4	1.4	0.6	90.0	1.5	8.5	0.080	0.507	26.048573	-98.351927

16 CARR: Libramiento de San Fernando

CLAVE:

RUTA: MEX-101-180

AÑO: 2023

LUGAR	ESTACION				CLASIFICACION VEHICULAR EN PORCIENTO													COORDENADAS		
	KM	TE	SC	TDPA	M	A	B	C2	C3	T3S2	T3S3	T3S2R4	OTROS	A	B	C	K'	D	LATITUD	LONGITUD
T. C. Cd. Victoria - Matamoros	0.00	3	0	6454	2.9	62.5	2.5	8.7	0.8	13.8	0.9	7.1	0.8	65.4	2.5	32.1	0.083	0.505	24.780254	-98.206915
X C. San Fernando - Carboneras	14.39	1	0	7603	3.3	64.7	3.5	4.6	1.0	13.3	2.3	6.6	0.7	68.0	3.5	28.5	0.070	0.514	24.821370	-98.113638
X C. San Fernando - Carboneras	14.39	3	0	7298	2.5	70.1	3.6	3.1	1.0	10.7	2.3	5.8	0.9	72.6	3.6	23.8	0.080	0.502	24.838365	-98.107898
T. C. Cd. Victoria - Matamoros	26.46	1	0	7692	3.5	67.7	4.8	3.8	0.9	10.6	2.2	5.9	0.6	71.2	4.8	24.0	0.072	0.515	24.933876	-98.108292

17 CARR: Libramiento de San Germán

CLAVE:

RUTA: MEX-101-180

AÑO: 2023

LUGAR	ESTACION				CLASIFICACION VEHICULAR EN PORCIENTO													COORDENADAS		
	KM	TE	SC	TDPA	M	A	B	C2	C3	T3S2	T3S3	T3S2R4	OTROS	A	B	C	K'	D	LATITUD	LONGITUD
T. C. Cd. Victoria - Matamoros Sur	0.00	3	0	4300	2.1	74.4	3.7	6.0	0.7	5.2	2.4	4.7	0.8	76.5	3.7	19.8	0.089	0.533	25.209166	-97.916714
T. C. Cd. Victoria - Matamoros Norte	4.50																			

18 CARR: Libramiento de Santander Jiménez

CLAVE:

RUTA: MEX-101

AÑO: 2023

LUGAR	ESTACION				CLASIFICACION VEHICULAR EN PORCIENTO													COORDENADAS		
	KM	TE	SC	TDPA	M	A	B	C2	C3	T3S2	T3S3	T3S2R4	OTROS	A	B	C	K'	D	LATITUD	LONGITUD
T. C. Cd. Victoria - Matamoros Sur	0.00	3	0	5845	0.6	64.9	1.7	7.4	0.8	14.3	2.4	7.0	0.9	65.5	1.7	32.8	0.094	0.504	24.214732	-98.494413
X. C. Santander - Jiménez	1.70	3	0	5365	1.4	71.2	1.9	4.3	0.9	12.1	1.8	5.4	1.0	72.6	1.9	25.5	0.102	0.500	24.219929	-98.494315
T. C. Cd. Victoria - Matamoros Norte	5.00																			

19 CARR: Libramiento Estación Manuel - González

CLAVE: 28002

RUTA: MEX-081

AÑO: 2023

LUGAR	ESTACION				CLASIFICACION VEHICULAR EN PORCIENTO													COORDENADAS		
	KM	TE	SC	TDPA	M	A	B	C2	C3	T3S2	T3S3	T3S2R4	OTROS	A	B	C	K'	D	LATITUD	LONGITUD
T. C. Tampico - Cd. Mante (Sur)	0.00	3	0	6530	5.7	58.8	5.3	3.9	2.1	10.3	3.0	10.4	0.5	64.5	5.3	30.2	0.072	0.507	22.713348	-98.288131
T. C. Tampico - Cd. Mante (Norte)	24.80	1	0	7665	4.2	60.4	5.5	3.3	1.4	9.8	3.1	11.5	0.8	64.6	5.5	29.9	0.093	0.506	22.844474	-98.438999

TAMAULIPAS

20 CARR: Libramiento General Francisco Villa

CLAVE:

RUTA: MEX-101-180

AÑO: 2023

LUGAR	ESTACION				CLASIFICACION VEHICULAR EN PORCIENTO														COORDENADAS	
	KM	TE	SC	TDPA	M	A	B	C2	C3	T3S2	T3S3	T3S2R4	OTROS	A	B	C	K'	D	LATITUD	LONGITUD
T. C. Cd. Victoria - Matamoros (Sur)	0.00	3	0	8542	2.4	68.0	3.1	7.0	1.0	10.6	1.5	5.5	0.9	70.4	3.1	26.5	0.098	0.527	25.005780	-98.085139
T. C. Cd. Victoria - Matamoros (Norte)	6.40	1	0	8924	2.3	71.2	4.1	2.8	0.9	10.5	2.3	5.1	0.8	73.5	4.1	22.4	0.087	0.501	25.045011	-98.075756

21 CARR: Matamoros - Playa Lauro Villar

CLAVE: 28078

RUTA: MEX-002

AÑO: 2023

LUGAR	ESTACION				CLASIFICACION VEHICULAR EN PORCIENTO														COORDENADAS	
	KM	TE	SC	TDPA	M	A	B	C2	C3	T3S2	T3S3	T3S2R4	OTROS	A	B	C	K'	D	LATITUD	LONGITUD
Matamoros	0.00	3	1	14321	3.5	92.0	0.8	1.1	0.7	0.8	0.4	0.5	0.2	95.5	0.8	3.7	0.142	0.540	25.837011	-97.434958
Matamoros	0.00	3	2	16812	3.6	91.6	0.9	1.2	0.6	0.9	0.4	0.6	0.2	95.2	0.9	3.9	0.072	0.540	25.837102	-97.434916
Playa Lauro Villar	37.00																			

22 CARR: Matamoros - Reynosa

CLAVE: 28077

RUTA: MEX-002

AÑO: 2023

LUGAR	ESTACION				CLASIFICACION VEHICULAR EN PORCIENTO														COORDENADAS	
	KM	TE	SC	TDPA	M	A	B	C2	C3	T3S2	T3S3	T3S2R4	OTROS	A	B	C	K'	D	LATITUD	LONGITUD
Matamoros	0.00	3	0	14967	2.6	78.6	4.1	5.4	2.2	4.7	1.2	0.8	0.4	81.2	4.1	14.7	0.075	0.505	25.925306	-97.591079
T. Izq. Libramiento Emilio Portes Gil	7.20	1	1	7455	1.5	82.7	3.2	6.3	1.5	3.4	0.5	0.7	0.2	84.2	3.2	12.6	0.081	0.515	25.916661	-97.571543
T. Izq. Libramiento Emilio Portes Gil	7.20	1	2	7031	1.4	80.7	3.7	6.8	1.8	4.1	0.5	0.8	0.2	82.1	3.7	14.2	0.102	0.515	25.916456	-97.571325
T. C. Matamoros - Reynosa (Cuota)	26.50																			
Empalme	38.00	1	0	7923	3.7	79.2	2.0	6.5	2.4	3.4	1.0	1.3	0.5	82.9	2.0	15.1	0.080	0.524	25.922550	-97.785468
T. Der. Nuevo Progreso	57.00	1	0	5261	2.7	78.8	2.4	7.1	2.0	3.1	1.7	1.8	0.4	81.5	2.4	16.1	0.089	0.521	25.947161	-97.961228
Río Bravo	67.00	1	0	7245	2.7	79.6	2.1	8.4	1.5	2.2	1.2	1.7	0.6	82.3	2.1	15.6	0.077	0.510	25.970870	-98.041497
Río Bravo	67.00	3	1	10537	1.6	86.6	3.1	3.2	2.0	2.3	0.4	0.7	0.1	88.2	3.1	8.7	0.114	0.509	25.997317	-98.134693
Río Bravo	67.00	3	2	10917	1.9	86.3	3.0	2.9	2.0	2.6	0.4	0.8	0.1	88.2	3.0	8.8	0.106	0.509	25.997515	-98.134608
X. C. Corredor Internacional Reynosa	81.00	1	1	19422	2.0	83.6	2.6	2.9	3.2	4.2	0.5	0.8	0.2	85.6	2.6	11.8	0.084	0.506	26.013301	-98.199471
X. C. Corredor Internacional Reynosa	81.00	1	2	18937	2.0	82.5	2.8	3.2	3.4	4.4	0.5	1.0	0.2	84.5	2.8	12.7	0.088	0.506	26.013134	-98.199435
T. Izq. Aeropuerto	85.65	3	1	30646	6.4	80.1	2.8	3.0	1.8	2.5	0.6	2.3	0.5	86.5	2.8	10.7	0.089	0.505	26.020535	-98.229045
T. Izq. Aeropuerto	85.65	3	2	31331	6.6	79.0	2.6	3.4	2.5	2.6	0.7	2.0	0.6	85.6	2.6	11.8	0.089	0.505	26.020319	-98.229110
Reynosa	98.00	1	1	45156	3.3	85.8	1.9	3.0	1.7	2.3	0.4	1.2	0.4	89.1	1.9	9.0	0.090	0.516	26.035811	-98.273564
Reynosa	98.00	1	2	42027	3.6	85.3	2.1	2.8	1.8	2.3	0.4	1.4	0.3	88.9	2.1	9.0	0.094	0.516	26.035663	-98.273718

TAMAULIPAS

23 CARR: Monterrey - Mier

CLAVE: 00127

RUTA: MEX-054

AÑO: 2023

LUGAR	ESTACION				CLASIFICACION VEHICULAR EN PORCIENTO										COORDENADAS					
	KM	TE	SC	TDPA	M	A	B	C2	C3	T3S2	T3S3	T3S2R4	OTROS	A	B	C	K'	D	LATITUD	LONGITUD
Monterrey	0.00																			
Apodaca	19.12	1	1	80226	4.1	86.0	1.1	3.2	1.6	1.7	1.1	0.5	0.7	90.1	1.1	8.8	0.066	0.510	25.750590	-100.199996
Apodaca	19.12	1	2	84250	4.2	86.0	1.1	3.2	1.5	1.6	1.1	0.5	0.8	90.2	1.1	8.7	0.076	0.510	25.750715	-100.200121
X. C. Libramiento Noroeste de Monterrey	21.30	3	1	55777	3.9	82.5	1.7	3.9	1.3	3.6	1.2	1.5	0.4	86.4	1.7	11.9	0.064	0.521	25.784586	-100.160110
X. C. Libramiento Noroeste de Monterrey	21.30	3	2	50741	3.8	81.4	1.9	4.4	1.5	3.7	1.3	1.6	0.4	85.2	1.9	12.9	0.062	0.521	25.784760	-100.160161
X. C. Zacatecas - Pesquería	28.15	1	1	20546	2.7	76.7	2.4	9.7	2.0	2.5	2.2	1.4	0.4	79.4	2.4	18.2	0.090	0.523	25.795048	-100.114984
X. C. Zacatecas - Pesquería	28.15	1	2	18720	2.8	76.6	2.3	9.5	2.2	2.5	2.0	1.6	0.5	79.4	2.3	18.3	0.087	0.523	25.795123	-100.114930
X. C. Zacatecas - Pesquería	28.15	3	0	9215	2.5	78.2	2.2	6.0	3.1	3.4	2.0	1.9	0.7	80.7	2.2	17.1	0.105	0.522	25.808190	-100.088544
X. C. Hacienda Guadalupe - Higueras	38.10	1	0	11285	2.3	80.3	2.1	5.0	2.0	3.8	1.1	2.7	0.7	82.6	2.1	15.3	0.096	0.516	25.846159	-100.033311
X. C. Hacienda Guadalupe - Higueras	38.10	3	0	4839	3.4	73.9	1.4	9.4	1.2	3.7	1.6	4.6	0.8	77.3	1.4	21.3	0.085	0.519	25.854117	-100.015128
Dr. González	47.60	1	0	2197	2.3	88.8	0.8	4.1	1.4	1.5	0.6	0.4	0.1	91.1	0.8	8.1	0.088	0.515	25.851092	-99.967044
Dr. González	47.60	3	0	474	9.3	74.3	4.1	9.6	0.7	1.1	0.2	0.6	0.1	83.6	4.1	12.3	0.089	0.514	25.867026	-99.932006
T. Der. Empalme Los Ramones	74.10	1	0	2784	3.5	71.5	2.1	3.8	1.3	6.1	2.2	8.6	0.9	75.0	2.1	22.9	0.088	0.528	25.922553	-99.722238
Cerralvo	95.95	1	0	4329	3.3	75.1	1.4	5.3	1.3	4.2	1.5	7.0	0.9	78.4	1.4	20.2	0.086	0.513	26.066639	-99.626401
Gral. Treviño	115.80	3	0	1895	5.2	62.4	4.1	6.2	2.0	6.4	2.3	10.8	0.6	67.6	4.1	28.3	0.102	0.512	26.232195	-99.470433
Lim. Edos. Term. N. L. Ppia. Tamps.	131.80																			
Mier	156.21	1	0	2631	1.6	74.3	1.7	2.8	1.6	6.4	1.8	9.5	0.3	75.9	1.7	22.4	0.100	0.528	26.425110	-99.166212

24 CARR: Monterrey - Nuevo Laredo (Libre)

CLAVE: 00463

RUTA: MEX-085

AÑO: 2023

LUGAR	ESTACION				CLASIFICACION VEHICULAR EN PORCIENTO										COORDENADAS					
	KM	TE	SC	TDPA	M	A	B	C2	C3	T3S2	T3S3	T3S2R4	OTROS	A	B	C	K'	D	LATITUD	LONGITUD
Monterrey	0.00																			
T. Izq. Gral. Escobedo (Lateral)	12.10	3	1	21911	5.5	82.2	1.7	6.6	1.3	1.3	0.6	0.6	0.2	87.7	1.7	10.6	0.081	0.519	25.795721	-100.279194
T. Izq. Gral. Escobedo (Central)	12.10	3	1	45540	2.7	88.3	1.5	3.3	0.8	2.3	0.5	0.5	0.1	91.0	1.5	7.5	0.068	0.510	25.795747	-100.279294
T. Izq. Gral. Escobedo (Central)	12.10	3	2	43597	2.7	87.8	1.6	3.4	0.9	2.4	0.6	0.5	0.1	90.5	1.6	7.9	0.071	0.510	25.795750	-100.279434
T. Izq. Gral. Escobedo (Lateral)	12.10	3	2	20312	5.3	82.4	1.7	6.7	1.4	1.3	0.5	0.5	0.2	87.7	1.7	10.6	0.083	0.519	25.795823	-100.279478
X. C. Libramiento Noroeste de Monterrey (Central)	16.00	1	1	39380	3.3	87.3	1.2	3.6	1.0	2.1	0.6	0.7	0.2	90.6	1.2	8.2	0.071	0.504	25.820479	-100.265014
X. C. Libramiento Noroeste de Monterrey (Lateral)	16.00	1	1	7776	1.9	77.7	2.4	11.1	2.4	3.2	0.6	0.4	0.3	79.6	2.4	18.0	0.075	0.509	25.820419	-100.264931
X. C. Libramiento Noroeste de Monterrey (Central)	16.00	1	2	38718	3.3	85.9	1.2	4.2	1.2	2.5	0.6	0.9	0.2	89.2	1.2	9.6	0.073	0.504	25.820528	-100.265128
X. C. Libramiento Noroeste de Monterrey (Lateral)	16.00	1	2	7515	1.8	75.8	2.7	12.2	2.5	3.7	0.6	0.4	0.3	77.6	2.7	19.7	0.088	0.509	25.820645	-100.265149
X. C. Libramiento Noroeste de Monterrey	16.00	3	1	50328	2.3	74.6	2.1	5.6	3.4	9.1	1.2	1.1	0.6	76.9	2.1	21.0	0.091	0.503	25.836244	-100.254013
X. C. Libramiento Noroeste de Monterrey	16.00	3	2	49669	2.1	72.7	2.3	6.1	3.7	9.8	1.4	1.3	0.6	74.8	2.3	22.9	0.086	0.503	25.836287	-100.254106
X. C. Santa Rosa - Salinas Victoria	20.19	3	1	48193	4.1	67.3	2.6	6.0	2.8	13.8	1.2	1.8	0.4	71.4	2.6	26.0	0.084	0.515	25.857918	-100.238806
X. C. Santa Rosa - Salinas Victoria	20.19	3	2	45072	4.2	66.5	2.4	6.3	2.9	14.2	1.1	2.0	0.4	70.7	2.4	26.9	0.068	0.515	25.858308	-100.238769

TAMAULIPAS

24 CARR: Monterrey - Nuevo Laredo (Libre)

CLAVE: 00463

RUTA: MEX-085

AÑO: 2023

LUGAR	ESTACION				CLASIFICACION VEHICULAR EN PORCIENTO										COORDENADAS					
	KM	TE	SC	TDPA	M	A	B	C2	C3	T3S2	T3S3	T3S2R4	OTROS	A	B	C	K'	D	LATITUD	LONGITUD
T. C. Monterrey - Nuevo Laredo (Cuota)	23.99																			
Ciénega de Flores	32.00	1	0	25241	3.5	78.5	2.2	7.7	1.2	6.3	0.3	0.2	0.1	82.0	2.2	15.8	0.081	0.514	25.942266	-100.178508
T. Der. Agualeguas	78.23	3	0	6418	2.5	49.5	2.6	6.3	2.4	34.7	1.1	0.8	0.1	52.0	2.6	45.4	0.081	0.514	26.335653	-100.111718
Sabinas Hidalgo	98.90	3	0	5243	2.6	44.9	4.1	7.7	2.8	34.7	1.4	1.5	0.3	47.5	4.1	48.4	0.083	0.534	26.532719	-100.150889
Vallecillos	124.40	3	0	4286	2.9	37.4	3.5	8.1	2.4	42.0	1.5	1.8	0.4	40.3	3.5	56.2	0.071	0.538	26.663281	-99.980298
T. Izq. Anáhuac	156.80	1	0	4597	3.1	44.0	3.8	6.8	3.5	35.9	1.4	1.3	0.2	47.1	3.8	49.1	0.069	0.512	26.875030	-99.832433
T. Izq. Anáhuac	156.80	3	1	8258	2.0	36.2	4.6	6.5	2.8	45.0	1.1	1.4	0.4	38.2	4.6	57.2	0.080	0.507	26.903847	-99.809360
T. Izq. Anáhuac	156.80	3	2	8476	2.0	36.2	4.7	6.6	2.8	44.5	1.2	1.6	0.4	38.2	4.7	57.1	0.072	0.507	26.903548	-99.809881
Lim. Edos. Term. N. L. Ppia. Tamps.	184.56																			
T. Der. Mier	205.90	1	1	9884	1.5	37.2	4.1	4.1	3.0	46.9	0.8	1.9	0.5	38.7	4.1	57.2	0.094	0.539	27.288855	-99.604880
T. Der. Mier	205.90	1	2	11535	1.7	38.7	3.9	4.3	3.1	44.7	1.0	2.0	0.6	40.4	3.9	55.7	0.071	0.539	27.289061	-99.604929
T. Der. Mier	205.90	3	1	8122	0.8	44.8	4.6	9.1	5.2	33.0	1.1	1.0	0.4	45.6	4.6	49.8	0.073	0.500	27.308047	-99.594627
T. Der. Mier	205.90	3	2	8130	0.7	45.3	4.3	9.0	5.5	33.2	0.9	0.8	0.3	46.0	4.3	49.7	0.076	0.500	27.308430	-99.594584
Nuevo Laredo	228.00	1	1	10786	0.9	64.0	1.8	7.0	5.2	18.0	1.1	1.5	0.5	64.9	1.8	33.3	0.088	0.512	27.375333	-99.558670
Nuevo Laredo	228.00	1	2	10265	1.1	63.5	1.5	7.1	5.4	18.4	1.0	1.4	0.6	64.6	1.5	33.9	0.071	0.512	27.375391	-99.558830

25 CARR: Monterrey - Reynosa (Libre)

CLAVE: 00088

RUTA: MEX-040

AÑO: 2023

LUGAR	ESTACION				CLASIFICACION VEHICULAR EN PORCIENTO										COORDENADAS					
	KM	TE	SC	TDPA	M	A	B	C2	C3	T3S2	T3S3	T3S2R4	OTROS	A	B	C	K'	D	LATITUD	LONGITUD
T. C. Monterrey - Mier	0.00																			
Villa Juárez	19.10	1	1	31596	4.7	85.3	1.2	5.5	0.9	0.9	0.5	0.7	0.3	90.0	1.2	8.8	0.068	0.506	25.651981	-100.108206
Villa Juárez	19.10	1	2	32458	4.5	85.8	1.3	5.1	1.0	0.8	0.5	0.7	0.3	90.3	1.3	8.4	0.066	0.506	25.652104	-100.108175
Villa Juárez	19.10	3	1	21728	7.0	82.9	1.0	4.4	1.3	1.0	0.5	1.4	0.5	89.9	1.0	9.1	0.079	0.512	25.636405	-100.083217
Villa Juárez	19.10	3	2	20687	7.1	82.3	1.1	4.4	1.5	1.1	0.5	1.5	0.5	89.4	1.1	9.5	0.071	0.512	25.636482	-100.083144
Puente Cadereyta	30.50	2	1	3034	2.1	77.5	0.2	5.2	3.2	5.8	2.4	2.8	0.8	79.6	0.2	20.2	0.091	0.500	25.601114	-100.005696
Puente Cadereyta	30.50	2	2	3034	2.1	77.5	0.2	5.2	3.2	5.8	2.4	2.8	0.8	79.6	0.2	20.2	0.091	0.500	25.601114	-100.005696
Refinería de Cadereyta	33.00	3	0	8128	2.7	80.0	1.5	3.8	2.7	5.0	2.2	1.5	0.6	82.7	1.5	15.8	0.086	0.511	25.594992	-99.923614
T. Izq. Los Ramones	68.78	3	0	4150	1.4	77.6	1.7	5.9	2.0	7.7	2.4	1.1	0.2	79.0	1.7	19.3	0.086	0.527	25.620332	-99.626398
China	114.10																			
Gral. Bravo	125.00	1	0	7387	1.2	79.7	1.5	5.4	1.0	6.5	2.3	2.0	0.4	80.9	1.5	17.6	0.101	0.506	25.774581	-99.190332
T. C. Cadereyta - Reynosa (Cuota)	178.00																			
Lim. Edos. Term. N. L. Ppia. Tamps.	192.00																			
T. Izq. Díaz Ordáz	192.55	1	1	5349	3.6	62.2	4.5	4.7	2.0	14.4	3.7	4.0	0.9	65.8	4.5	29.7	0.102	0.522	25.967502	-98.594039
T. Izq. Díaz Ordáz	192.55	1	2	5845	3.7	61.9	4.3	4.8	2.1	14.2	3.8	4.3	0.9	65.6	4.3	30.1	0.106	0.522	25.968079	-98.593887

TAMAULIPAS

25 CARR: Monterrey - Reynosa (Libre)

CLAVE: 00088

RUTA: MEX-040

AÑO: 2023

LUGAR	ESTACION				CLASIFICACION VEHICULAR EN PORCIENTO										COORDENADAS					
	KM	TE	SC	TDPA	M	A	B	C2	C3	T3S2	T3S3	T3S2R4	OTROS	A	B	C	K'	D	LATITUD	LONGITUD
T. Der. Libramiento de Reynosa Sur II	206.33	1	1	6020	4.0	64.7	3.5	4.9	2.7	11.9	2.9	4.6	0.8	68.7	3.5	27.8	0.091	0.532	26.016521	-98.467478
T. Der. Libramiento de Reynosa Sur II	206.33	1	2	6851	3.7	65.5	3.7	4.6	2.9	11.6	2.6	4.5	0.9	69.2	3.7	27.1	0.095	0.532	26.017063	-98.467425
Reynosa	225.00	1	1	24620	2.1	84.1	2.0	4.7	1.3	3.9	0.8	0.9	0.2	86.2	2.0	11.8	0.080	0.522	26.042239	-98.401919
Reynosa	225.00	1	2	22556	2.3	84.3	2.0	4.6	1.4	3.5	0.7	1.0	0.2	86.6	2.0	11.4	0.090	0.522	26.042587	-98.401959

26 CARR: Paras - Nueva Ciudad Guerrero

CLAVE: 00476

RUTA: MEX-030

AÑO: 2023

LUGAR	ESTACION				CLASIFICACION VEHICULAR EN PORCIENTO										COORDENADAS					
	KM	TE	SC	TDPA	M	A	B	C2	C3	T3S2	T3S3	T3S2R4	OTROS	A	B	C	K'	D	LATITUD	LONGITUD
Paras	0.00	3	0	460	0.7	65.9	1.3	23.2	1.4	2.4	1.9	3.2	0.0	66.6	1.3	32.1	0.118	0.514	26.502004	-99.516260
Lim. Edos. Term. N. L. Ppia. Tamps.	13.10																			
T. C. Reynosa - (T. C. Monterrey - Nuevo Laredo)	32.00	1	0	342	0.0	74.6	0.9	15.4	0.8	1.8	1.8	4.7	0.0	74.6	0.9	24.5	0.172	0.519	26.555008	-99.244291

27 CARR: Petrocel - Puerto Industrial Altamira

CLAVE:

RUTA: MEX-080

AÑO: 2023

LUGAR	ESTACION				CLASIFICACION VEHICULAR EN PORCIENTO										COORDENADAS					
	KM	TE	SC	TDPA	M	A	B	C2	C3	T3S2	T3S3	T3S2R4	OTROS	A	B	C	K'	D	LATITUD	LONGITUD
Petrocel	0.00	3	1	13773	5.0	76.5	1.8	4.1	3.5	4.9	1.4	1.9	0.9	81.5	1.8	16.7	0.106	0.503	22.382990	-97.899277
Petrocel	0.00	3	2	13603	5.5	77.2	1.6	3.6	3.2	4.7	1.3	2.0	0.9	82.7	1.6	15.7	0.096	0.503	22.383109	-97.899387
T. Izq. Altamira	3.80	3	1	11739	7.1	67.9	1.8	5.2	4.0	5.7	1.6	5.8	0.9	75.0	1.8	23.2	0.137	0.518	22.412521	-97.887213
T. Izq. Altamira	3.80	3	2	10929	7.3	67.3	2.0	5.3	4.2	5.5	1.6	5.9	0.9	74.6	2.0	23.4	0.123	0.518	22.412554	-97.887335
Puerto Industrial Altamira	10.60																			

28 CARR: Piedras Negras - Nuevo Laredo

CLAVE: 00503

RUTA: MEX-002

AÑO: 2023

LUGAR	ESTACION				CLASIFICACION VEHICULAR EN PORCIENTO										COORDENADAS					
	KM	TE	SC	TDPA	M	A	B	C2	C3	T3S2	T3S3	T3S2R4	OTROS	A	B	C	K'	D	LATITUD	LONGITUD
T. C. Monclova - Piedras Negras	0.00	3	1	5340	2.4	86.3	1.1	3.6	3.2	2.4	0.6	0.3	0.1	88.7	1.1	10.2	0.082	0.509	28.639883	-100.552189
T. C. Monclova - Piedras Negras	0.00	3	2	5153	2.5	86.5	1.1	3.6	2.9	2.4	0.6	0.3	0.1	89.0	1.1	9.9	0.102	0.509	28.639931	-100.552086
El Saucito	16.90	3	0	1143	1.4	61.4	2.0	13.2	3.8	9.3	0.9	7.1	0.9	62.8	2.0	35.2	0.086	0.506	28.501722	-100.467199
T. Der. Villa Unión	37.00	1	0	1046	0.9	63.7	2.8	10.4	4.2	8.0	1.1	8.0	0.9	64.6	2.8	32.6	0.090	0.510	28.347300	-100.392906
T. Der. Villa Unión	37.00	3	0	957	4.3	51.7	2.7	12.9	4.5	12.4	2.9	7.6	1.0	56.0	2.7	41.3	0.085	0.527	28.333064	-100.388573
Guerrero	42.00	3	0	772	2.3	55.1	3.0	7.7	5.9	13.7	1.0	10.5	0.8	57.4	3.0	39.6	0.091	0.508	28.307472	-100.364668
Lim. Edos. Term. Coah. Ppia. N. L.	124.40																			
T. C. Monclova - Colombia	134.00	3	0	3047	1.9	63.9	1.5	8.5	3.2	17.0	1.7	2.0	0.3	65.8	1.5	32.7	0.084	0.506	27.688679	-99.778447

TAMAULIPAS

28 CARR: Piedras Negras - Nuevo Laredo

CLAVE: 00503

RUTA: MEX-002

AÑO: 2023

LUGAR	ESTACION				CLASIFICACION VEHICULAR EN PORCIENTO													COORDENADAS			
	KM	TE	SC	TDPA	M	A	B	C2	C3	T3S2	T3S3	T3S2R4	OTROS	A	B	C	K'	D	LATITUD	LONGITUD	
Lim. Edos. Term. N. L. Ppia. Tamps.	138.20																				
T. Der. Libramiento de Nuevo Laredo	157.70	1	1	5639	7.6	45.1	1.4	5.4	12.1	24.8	1.2	1.6	0.8	52.7	1.4	45.9	0.102	0.539	27.572670	-99.604060	
T. Der. Libramiento de Nuevo Laredo	157.70	1	2	4814	7.8	45.0	1.7	5.2	12.5	24.5	1.1	1.3	0.9	52.8	1.7	45.5	0.100	0.539	27.572761	-99.603996	
Nuevo Laredo	175.00	1	1	12288	2.5	47.6	2.1	5.3	15.5	25.4	0.5	0.7	0.4	50.1	2.1	47.8	0.103	0.518	27.549957	-99.579760	
Nuevo Laredo	175.00	1	2	11412	2.3	47.4	2.3	5.8	14.8	25.8	0.5	0.8	0.3	49.7	2.3	48.0	0.109	0.518	27.549943	-99.579601	

29 CARR: Ramal a Puente Tampico

CLAVE: 28020

RUTA: MEX-180

AÑO: 2023

LUGAR	ESTACION				CLASIFICACION VEHICULAR EN PORCIENTO													COORDENADAS			
	KM	TE	SC	TDPA	M	A	B	C2	C3	T3S2	T3S3	T3S2R4	OTROS	A	B	C	K'	D	LATITUD	LONGITUD	
T. C. Tuxpam - Tampico	186.00	3	1	4820	5.4	68.7	5.1	7.0	2.3	5.2	1.8	3.7	0.8	74.1	5.1	20.8	0.122	0.506	22.184444	-97.825378	
T. C. Tuxpam - Tampico	186.00	3	2	4712	4.8	70.4	4.8	6.8	2.3	4.9	1.7	3.4	0.9	75.2	4.8	20.0	0.115	0.506	22.184469	-97.825488	
Lim. Edos. Term. Ver. Ppia. Tamps.	193.12																				
Puente Tampico	193.12	1	1	6578	2.7	74.6	5.2	7.2	2.2	4.9	1.9	0.5	0.8	77.3	5.2	17.5	0.084	0.527	22.221628	-97.827086	
Puente Tampico	193.12	1	2	7323	3.0	75.4	4.9	6.9	1.9	5.1	1.5	0.5	0.8	78.4	4.9	16.7	0.112	0.527	22.221551	-97.827131	
Tampico	194.36																				

30 CARR: Ramal de Acceso a Puente Anzaldúas

CLAVE: 28619

RUTA: MEX

AÑO: 2023

LUGAR	ESTACION				CLASIFICACION VEHICULAR EN PORCIENTO													COORDENADAS			
	KM	TE	SC	TDPA	M	A	B	C2	C3	T3S2	T3S3	T3S2R4	OTROS	A	B	C	K'	D	LATITUD	LONGITUD	
T. C. Monterrey - Reynosa	0.00	3	1	8277	1.4	88.1	1.0	3.0	2.1	2.2	0.6	1.2	0.4	89.5	1.0	9.5	0.102	0.540	26.060259	-98.372568	
T. C. Monterrey - Reynosa	0.00	3	2	7063	1.7	87.8	1.0	2.7	2.0	2.2	0.8	1.3	0.5	89.5	1.0	9.5	0.112	0.540	26.060263	-98.372659	
Puente Anzaldúas	6.20																				

31 CARR: Ramal de Acceso al Puente Internacional Laredo III

CLAVE:

RUTA: MEX

AÑO: 2023

LUGAR	ESTACION				CLASIFICACION VEHICULAR EN PORCIENTO													COORDENADAS			
	KM	TE	SC	TDPA	M	A	B	C2	C3	T3S2	T3S3	T3S2R4	OTROS	A	B	C	K'	D	LATITUD	LONGITUD	
T. C. Piedras Negras - Nuevo Laredo	0.00																				
Plaza de Cobro Puente Internacional Nuevo Laredo III	5.20	2	0	5985	1.8	0.0	16.1	0.4	81.4	0.0	0.0	0.0	0.3	1.8	16.1	82.1	0.090	0.500	27.595078	-99.541522	



TAMAULIPAS

32 CARR: Reynosa - Nuevo Laredo

CLAVE: 28076

RUTA: MEX-002

AÑO: 2023

LUGAR	ESTACION				CLASIFICACION VEHICULAR EN PORCIENTO										COORDENADAS					
	KM	TE	SC	TDPA	M	A	B	C2	C3	T3S2	T3S3	T3S2R4	OTROS	A	B	C	K'	D	LATITUD	LONGITUD
Reynosa	0.00	3	1	3824	1.7	85.0	2.9	4.9	1.0	1.6	0.7	1.6	0.6	86.7	2.9	10.4	0.083	0.520	26.151644	-98.361483
Reynosa	0.00	3	2	3529	1.3	86.4	2.6	4.7	1.0	1.1	0.5	1.8	0.6	87.7	2.6	9.7	0.095	0.520	26.151383	-98.360073
X. C. Los Dos Estados - Gustavo Díaz Ordáz	35.68	3	0	6860	1.8	84.2	1.1	5.7	1.5	2.1	1.2	1.6	0.8	86.0	1.1	12.9	0.082	0.504	26.218173	-98.616982
Cd. Camargo	63.40	3	0	4503	1.8	77.1	1.4	6.5	1.4	3.4	1.6	5.9	0.9	78.9	1.4	19.7	0.084	0.503	26.333552	-98.850550
Los Guerra	92.77	3	0	2867	2.0	72.7	1.9	4.3	1.3	6.3	2.0	8.7	0.8	74.7	1.9	23.4	0.098	0.500	26.393323	-99.102629
Mier	102.35	3	0	1400	1.1	82.4	1.4	3.3	2.1	4.1	2.0	2.9	0.7	83.5	1.4	15.1	0.104	0.532	26.462435	-99.157450
T. Der. Nueva Cd. Guerrero (2º Acceso)	122.67	3	0	822	1.4	74.6	1.8	6.8	3.2	6.1	1.4	3.8	0.9	76.0	1.8	22.2	0.107	0.512	26.557896	-99.244476
T. C. Monterrey - Nuevo Laredo	221.08	1	0	874	2.6	65.1	1.8	10.2	5.5	7.1	1.0	6.2	0.5	67.7	1.8	30.5	0.106	0.504	27.298927	-99.589358

33 CARR: Soto La Marina - La Coma

CLAVE: 28052

RUTA: MEX-180

AÑO: 2023

LUGAR	ESTACION				CLASIFICACION VEHICULAR EN PORCIENTO										COORDENADAS					
	KM	TE	SC	TDPA	M	A	B	C2	C3	T3S2	T3S3	T3S2R4	OTROS	A	B	C	K'	D	LATITUD	LONGITUD
Soto La Marina	0.00	3	0	3071	5.7	71.8	3.4	9.8	1.1	4.7	1.6	1.5	0.4	77.5	3.4	19.1	0.088	0.529	23.783186	-98.196822
La Coma	86.00	1	0	1159	0.6	74.2	4.1	9.1	0.8	6.1	2.3	2.6	0.2	74.8	4.1	21.1	0.125	0.527	24.464325	-98.338982

34 CARR: Tampico - Cd. Mante

CLAVE: 28163

RUTA: MEX-080

AÑO: 2023

LUGAR	ESTACION				CLASIFICACION VEHICULAR EN PORCIENTO										COORDENADAS					
	KM	TE	SC	TDPA	M	A	B	C2	C3	T3S2	T3S3	T3S2R4	OTROS	A	B	C	K'	D	LATITUD	LONGITUD
Tampico	0.00																			
Cd. Madero	9.40																			
T. Der. Cyanaquim	14.79	1	1	36952	6.7	81.2	1.6	3.2	1.3	1.9	0.6	2.8	0.7	87.9	1.6	10.5	0.070	0.502	22.357177	-97.889840
T. Der. Cyanaquim	14.79	1	2	36702	6.6	80.4	1.8	3.4	1.4	2.1	0.7	2.9	0.7	87.0	1.8	11.2	0.080	0.502	22.357090	-97.889959
Altamira	24.00	1	1	25170	4.6	89.2	0.8	2.4	0.7	1.3	0.3	0.6	0.1	93.8	0.8	5.4	0.087	0.517	22.385956	-97.917876
Altamira	24.00	1	2	28626	4.9	88.2	1.0	2.5	0.7	1.2	0.5	0.8	0.2	93.1	1.0	5.9	0.073	0.517	22.385967	-97.918141
Altamira	24.00	3	1	10709	5.9	83.1	1.9	2.4	2.6	1.2	1.4	1.1	0.4	89.0	1.9	9.1	0.075	0.518	22.423424	-97.945681
Altamira	24.00	3	2	11507	5.8	83.1	2.0	2.5	2.7	1.1	1.2	1.2	0.4	88.9	2.0	9.1	0.069	0.518	22.423638	-97.946120
T. Der. Lomas del Real	33.00	3	1	7379	2.6	72.1	2.9	3.1	2.1	7.6	2.3	6.5	0.8	74.7	2.9	22.4	0.088	0.505	22.477021	-98.003450
T. Der. Lomas del Real	33.00	3	2	7516	2.9	72.2	2.7	2.8	2.4	7.6	2.3	6.3	0.8	75.1	2.7	22.2	0.076	0.505	22.476891	-98.003580
Cuahtémoc	55.80	3	1	4843	3.5	61.7	4.4	3.2	1.7	10.3	4.1	10.2	0.9	65.2	4.4	30.4	0.079	0.521	22.559547	-98.155613
Cuahtémoc	55.80	3	2	5276	3.4	61.7	4.3	3.6	1.9	10.0	3.9	10.3	0.9	65.1	4.3	30.6	0.088	0.521	22.559474	-98.155693
T. Libramiento Estación Manuel - González	73.72																			
Estación Manuel	78.12	1	1	4497	3.7	62.1	4.6	3.6	1.9	9.9	3.8	9.6	0.8	65.8	4.6	29.6	0.076	0.521	22.693880	-98.274896
Estación Manuel	78.12	1	2	4894	3.8	63.7	4.5	3.9	1.8	8.8	3.2	9.5	0.8	67.5	4.5	28.0	0.085	0.521	22.693821	-98.274988

TAMAULIPAS

34 CARR: Tampico - Cd. Mante

CLAVE: 28163

RUTA: MEX-080

AÑO: 2023

LUGAR	ESTACION				CLASIFICACION VEHICULAR EN PORCIENTO													COORDENADAS		
	KM	TE	SC	TDPA	M	A	B	C2	C3	T3S2	T3S3	T3S2R4	OTROS	A	B	C	K'	D	LATITUD	LONGITUD
González	96.00	3	0	3002	2.4	85.9	1.8	2.2	1.4	2.6	1.0	2.3	0.4	88.3	1.8	9.9	0.087	0.505	22.821631	-98.451543
Magiscatzín	122.50	3	0	2085	3.4	79.5	1.8	3.0	2.3	4.1	1.7	3.6	0.6	82.9	1.8	15.3	0.097	0.506	22.791432	-98.716993
Faja de Oro	143.00	3	0	2718	4.9	81.9	1.8	2.5	2.2	2.8	1.1	2.5	0.3	86.8	1.8	11.4	0.088	0.513	22.724823	-98.868516
T. C. Cd. Valles - Cd. Victoria	155.00	1	0	4280	2.6	88.0	1.3	1.9	1.4	2.1	0.5	1.8	0.4	90.6	1.3	8.1	0.092	0.537	22.724793	-98.952665

35 CARR: Tuxpam - Tampico

CLAVE: 00529

RUTA: MEX-180

AÑO: 2023

LUGAR	ESTACION				CLASIFICACION VEHICULAR EN PORCIENTO													COORDENADAS		
	KM	TE	SC	TDPA	M	A	B	C2	C3	T3S2	T3S3	T3S2R4	OTROS	A	B	C	K'	D	LATITUD	LONGITUD
Tuxpam	0.00	3	0	6819	8.2	82.7	3.1	3.8	1.0	0.6	0.1	0.4	0.1	90.9	3.1	6.0	0.088	0.509	20.954997	-97.461044
T. C. Tuxpan - Tampico (Cuota)	8.90	3	0	5898	8.2	78.5	4.3	6.2	1.4	0.8	0.2	0.4	0.0	86.7	4.3	9.0	0.097	0.537	20.961398	-97.489658
T. Izq. La Lajuela	28.70	1	0	3062	7.1	80.7	2.9	5.9	1.6	1.2	0.2	0.4	0.0	87.8	2.9	9.3	0.086	0.504	21.039726	-97.593366
T. Izq. Tempoal de Sánchez	45.20	1	0	5323	13.6	79.2	2.1	3.2	0.5	0.9	0.2	0.3	0.0	92.8	2.1	5.1	0.079	0.501	21.090230	-97.730704
T. Izq. Tempoal de Sánchez	45.20	3	0	6029	9.7	76.0	3.4	3.4	1.2	4.0	1.0	1.1	0.2	85.7	3.4	10.9	0.068	0.517	21.097154	-97.731401
Cerro Azul	56.66	1	0	6532	9.4	77.3	2.9	3.4	1.5	3.2	1.0	1.1	0.2	86.7	2.9	10.4	0.068	0.539	21.166816	-97.755143
T. Der. Zacamixtle	64.50	1	0	4641	7.5	73.1	3.2	6.4	2.0	5.1	1.4	1.1	0.2	80.6	3.2	16.2	0.078	0.519	21.233687	-97.733278
T. Der. Zacamixtle	64.50	3	0	7188	3.6	77.0	4.9	8.5	1.0	3.4	0.7	0.8	0.1	80.6	4.9	14.5	0.077	0.508	21.252123	-97.734022
T. Izq. Naranjos	78.60	1	0	6043	7.6	77.1	3.2	4.1	1.9	3.8	1.2	1.0	0.1	84.7	3.2	12.1	0.078	0.517	21.335820	-97.692902
T. Izq. Naranjos	78.60	3	0	8969	15.7	75.2	2.1	2.1	0.9	2.6	0.7	0.7	0.0	90.9	2.1	7.0	0.082	0.518	21.369203	-97.684925
T. Der. El Añoño	81.50	3	0	4347	11.3	72.1	4.2	2.8	1.8	5.0	1.4	1.2	0.2	83.4	4.2	12.4	0.081	0.507	21.379387	-97.691091
T. Der. Campo Mamey	94.39	3	0	4165	8.1	72.9	5.5	3.4	1.9	4.4	1.9	1.7	0.2	81.0	5.5	13.5	0.072	0.506	21.457240	-97.763246
T. Der. Ozuluama	124.42	1	0	4591	10.2	72.2	5.0	4.0	1.4	4.2	1.5	1.3	0.2	82.4	5.0	12.6	0.080	0.528	21.666268	-97.859753
T. Der. Ozuluama	124.42	3	0	6881	8.9	73.1	3.2	5.1	2.9	2.5	1.5	2.3	0.5	82.0	3.2	14.8	0.070	0.505	21.690920	-97.844844
T. C. Tuxpan - Tampico (Cuota)	131.32	3	1	2799	9.2	64.3	6.0	5.6	2.1	7.1	2.4	2.6	0.7	73.5	6.0	20.5	0.091	0.531	21.717980	-97.809745
T. C. Tuxpan - Tampico (Cuota)	131.32	3	2	3166	9.1	64.9	6.0	5.5	2.0	7.1	2.3	2.5	0.6	74.0	6.0	20.0	0.080	0.531	21.718017	-97.809861
Tampico Alto	177.80	1	0	7768	7.2	58.0	7.7	9.5	2.2	7.5	3.1	3.8	1.0	65.2	7.7	27.1	0.086	0.506	22.109205	-97.803342
Tampico Alto	177.80	3	0	8946	6.2	72.1	4.9	3.1	2.0	5.8	1.3	4.0	0.6	78.3	4.9	16.8	0.093	0.506	22.124212	-97.807387
Villa Cuauhtémoc	186.85	1	0	8647	5.5	66.2	2.4	9.5	2.4	6.6	2.5	4.3	0.6	71.7	2.4	25.9	0.073	0.536	22.167615	-97.829522
Villa Cuauhtémoc	186.85	3	1	7465	15.0	70.9	1.2	1.7	1.6	4.1	1.1	3.6	0.8	85.9	1.2	12.9	0.064	0.513	22.201319	-97.841473
Villa Cuauhtémoc	186.85	3	2	7851	15.0	71.1	1.1	1.7	1.6	4.0	1.1	3.6	0.8	86.1	1.1	12.8	0.061	0.513	22.201275	-97.841515
Lim. Edos. Term. Ver. Ppia. Tamps.	189.82																			
Tampico	191.43																			

TAMAULIPAS

36 CARR: Viaducto de Reynosa

CLAVE:

RUTA: MEX

AÑO: 2023

LUGAR	ESTACION				CLASIFICACION VEHICULAR EN PORCIENTO										COORDENADAS					
	KM	TE	SC	TDPA	M	A	B	C2	C3	T3S2	T3S3	T3S2R4	OTROS	A	B	C	K'	D	LATITUD	LONGITUD
T. C. Las Urracas - T. C. (Matamoros - Reynosa)	80.50	3	0	14228	3.5	89.7	1.3	2.7	1.1	0.8	0.3	0.5	0.1	93.2	1.3	5.5	0.077	0.539	26.012240	-98.352207
T. C. Monterrey - Reynosa (Libre)	95.40	1	0	7384	2.5	90.2	1.3	2.4	1.1	1.3	0.6	0.5	0.1	92.7	1.3	6.0	0.081	0.567	26.040320	-98.398161

37 CARR: Libramiento de Reynosa Sur II

CLAVE:

RUTA: MEX-040D

AÑO: 2023

LUGAR	ESTACION				CLASIFICACION VEHICULAR EN PORCIENTO										COORDENADAS					
	KM	TE	SC	TDPA	M	A	B	C2	C3	T3S2	T3S3	T3S2R4	OTROS	A	B	C	K'	D	LATITUD	LONGITUD
T. C. Matamoros - Reynosa	0.00	3	1	1669	1.8	59.7	4.0	4.2	3.9	15.4	3.8	6.4	0.8	61.5	4.0	34.5	0.102	0.525	26.004246	-98.168677
T. C. Matamoros - Reynosa	0.00	3	2	1514	2.0	58.9	4.2	4.0	3.8	15.9	3.6	6.6	1.0	60.9	4.2	34.9	0.085	0.525	26.003968	-98.168609
T. C. Las Urracas - T. C. (Matamoros - Reynosa)	13.70	1	0	5330	3.3	39.5	3.6	6.2	3.7	30.0	3.4	9.4	0.9	42.8	3.6	53.6	0.089	0.532	25.942259	-98.235498
T. C. Las Urracas - T. C. (Matamoros - Reynosa)	13.70	3	0	3421	2.9	46.8	4.7	5.9	4.7	22.4	4.0	7.7	0.9	49.7	4.7	45.6	0.087	0.515	25.928472	-98.300345
T. C. Monterrey - Reynosa	35.80	1	0	2474	3.6	38.7	5.2	5.0	3.4	29.1	5.2	8.9	0.9	42.3	5.2	52.5	0.086	0.510	26.007110	-98.451739

38 CARR: Libramiento Poniente de Tampico (Cuota)

CLAVE: 28051

RUTA: MEX-070D

AÑO: 2023

LUGAR	ESTACION				CLASIFICACION VEHICULAR EN PORCIENTO										COORDENADAS					
	KM	TE	SC	TDPA	M	A	B	C2	C3	T3S2	T3S3	T3S2R4	OTROS	A	B	C	K'	D	LATITUD	LONGITUD
T. C. Tampico - Cd. Mante	0.00	3	0	25770	5.9	73.9	2.5	3.2	2.3	5.7	1.5	4.1	0.9	79.8	2.5	17.7	0.087	0.541	22.335370	-97.882305
Plaza de Cobro Tampico	5.10	2	0	7597	1.8	52.2	0.7	6.7	5.4	13.9	4.9	12.8	1.6	54.0	0.7	45.3	0.074	0.500	22.275330	-97.893426
T. C. Cd. Valles - Tampico	14.20	1	0	12184	8.1	62.2	3.6	4.6	2.4	8.3	3.3	6.6	0.9	70.3	3.6	26.1	0.075	0.520	22.231744	-97.891170

39 CARR: Matamoros - Reynosa (Cuota)

CLAVE: 28079

RUTA: MEX-002D

AÑO: 2023

LUGAR	ESTACION				CLASIFICACION VEHICULAR EN PORCIENTO										COORDENADAS					
	KM	TE	SC	TDPA	M	A	B	C2	C3	T3S2	T3S3	T3S2R4	OTROS	A	B	C	K'	D	LATITUD	LONGITUD
T. C. Matamoros - Reynosa	26.50	3	1	3118	3.3	71.5	4.2	3.7	3.6	8.9	2.1	2.1	0.6	74.8	4.2	21.0	0.093	0.535	25.996620	-97.751836
T. C. Matamoros - Reynosa	26.50	3	2	3587	3.3	71.4	4.3	3.9	3.7	8.6	2.2	2.1	0.5	74.7	4.3	21.0	0.083	0.535	25.996385	-97.751991
Plaza de Cobro Nuevo Progreso	49.58	2	1	2436	0.3	68.1	2.8	3.9	4.0	13.0	2.9	3.0	2.0	68.4	2.8	28.8	0.101	0.500	26.036283	-97.954508
Plaza de Cobro Nuevo Progreso	49.58	2	2	2436	0.3	68.1	2.8	3.9	4.0	13.0	2.9	3.0	2.0	68.4	2.8	28.8	0.101	0.500	26.036283	-97.954508
Plaza de Cobro Nuevo Progreso	49.58	3	1	3179	2.6	73.3	3.3	5.1	3.6	7.7	1.4	2.2	0.8	75.9	3.3	20.8	0.076	0.519	26.035487	-97.963476
Plaza de Cobro Nuevo Progreso	49.58	3	2	3431	2.9	69.6	3.6	6.1	3.8	8.9	1.7	2.4	1.0	72.5	3.6	23.9	0.074	0.519	26.035215	-97.963252
T. Der. Puente Internacional Río Bravo Donna	62.98	3	1	5358	1.7	77.5	3.4	4.4	3.4	5.5	1.6	2.0	0.5	79.2	3.4	17.4	0.086	0.504	26.013803	-98.099264
T. Der. Puente Internacional Río Bravo Donna	62.98	3	2	5267	1.9	77.6	3.2	4.8	3.2	5.1	1.4	2.2	0.6	79.5	3.2	17.3	0.088	0.504	26.013542	-98.099385
T. C. Matamoros - Reynosa	71.00	1	1	5468	1.9	77.2	3.4	5.1	3.2	5.2	1.5	2.0	0.5	79.1	3.4	17.5	0.084	0.514	26.008453	-98.158274
T. C. Matamoros - Reynosa	71.00	1	2	5176	1.8	78.1	3.2	5.0	3.2	5.0	1.4	1.8	0.5	79.9	3.2	16.9	0.091	0.514	26.008191	-98.158203

TAMAULIPAS

40 CARR: Aldama - Barra El Tordo

CLAVE: 28620

RUTA: TAM

AÑO: 2023

LUGAR	ESTACION				CLASIFICACION VEHICULAR EN PORCIENTO														COORDENADAS	
	KM	TE	SC	TDPA	M	A	B	C2	C3	T3S2	T3S3	T3S2R4	OTROS	A	B	C	K'	D	LATITUD	LONGITUD
Aldama	0.00	3	0	2410	8.9	81.6	0.8	1.6	3.2	1.6	0.4	1.6	0.3	90.5	0.8	8.7	0.076	0.520	22.916452	-98.065770
Barra El Tordo	20.00																			

41 CARR: Barretal - Nueva Villa de Padilla

CLAVE: 28001

RUTA: TAM-001

AÑO: 2023

LUGAR	ESTACION				CLASIFICACION VEHICULAR EN PORCIENTO														COORDENADAS	
	KM	TE	SC	TDPA	M	A	B	C2	C3	T3S2	T3S3	T3S2R4	OTROS	A	B	C	K'	D	LATITUD	LONGITUD
Barretal	0.00	3	0	3706	2.7	81.9	1.1	7.9	1.7	2.7	1.5	0.2	0.3	84.6	1.1	14.3	0.088	0.503	24.083177	-99.120923
Nueva Villa de Padilla	24.50	1	0	1836	8.6	79.0	0.8	8.0	1.3	1.9	0.2	0.1	0.1	87.6	0.8	11.6	0.094	0.505	24.053149	-98.914536

42 CARR: China - Méndez

CLAVE: 00191

RUTA: NL-TAM

AÑO: 2023

LUGAR	ESTACION				CLASIFICACION VEHICULAR EN PORCIENTO														COORDENADAS	
	KM	TE	SC	TDPA	M	A	B	C2	C3	T3S2	T3S3	T3S2R4	OTROS	A	B	C	K'	D	LATITUD	LONGITUD
China	0.00	3	0	1693	3.0	70.8	1.7	18.4	1.7	2.2	1.2	1.0	0.0	73.8	1.7	24.5	0.089	0.522	25.697385	-99.221127
Lim. Edos. Term. N. L. Ppia. Tamps.	75.00																			
Méndez	100.00																			

43 CARR: Ébano - Estación Manuel

CLAVE: 24624

RUTA: SLP-TAM

AÑO: 2023

LUGAR	ESTACION				CLASIFICACION VEHICULAR EN PORCIENTO														COORDENADAS	
	KM	TE	SC	TDPA	M	A	B	C2	C3	T3S2	T3S3	T3S2R4	OTROS	A	B	C	K'	D	LATITUD	LONGITUD
Ébano	0.00	3	0	2874	18.2	66.2	0.4	9.7	1.4	2.1	0.3	1.4	0.3	84.4	0.4	15.2	0.086	0.503	22.233381	-98.366188
Lím. de Edos. Term. S. L. P. Ppia. Ver.	2.71																			
Lím. de Edos. Term. Ver. Ppia. S. L. P.	3.95																			
Lím. de Edos. Term. S. L. P. Ppia. Ver.	5.00																			
Lím. de Edos. Term. Ver. Ppia. Tamps.	25.00																			
Estación Manuel	65.60																			

44 CARR: El Limón - Ocampo

CLAVE: 28019

RUTA: TAM-019

AÑO: 2023

LUGAR	ESTACION				CLASIFICACION VEHICULAR EN PORCIENTO														COORDENADAS	
	KM	TE	SC	TDPA	M	A	B	C2	C3	T3S2	T3S3	T3S2R4	OTROS	A	B	C	K'	D	LATITUD	LONGITUD
T. C. Cd. Valles - Cd. Victoria	0.00	3	0	2420	14.6	69.5	1.9	7.2	3.0	1.5	0.2	1.9	0.2	84.1	1.9	14.0	0.087	0.507	22.837048	-99.024849
Ocampo	43.00	1	0	2050	14.6	73.6	1.1	4.0	1.7	1.6	0.7	2.4	0.3	88.2	1.1	10.7	0.090	0.503	22.830499	-99.321063

TAMAULIPAS

45 CARR: Ent. Huisachito - Nuevo Laredo

CLAVE: 00074

RUTA: NL-001-TAM

AÑO: 2023

LUGAR	ESTACION				CLASIFICACION VEHICULAR EN PORCIENTO														COORDENADAS	
	KM	TE	SC	TDPA	M	A	B	C2	C3	T3S2	T3S3	T3S2R4	OTROS	A	B	C	K'	D	LATITUD	LONGITUD
T. C. Monterrey - Colombia	0.00	3	0	1925	0.2	75.2	4.1	9.0	3.8	3.8	3.0	0.6	0.3	75.4	4.1	20.5	0.081	0.507	27.354518	-99.949175
Lim. Edos. Term. N. L. Ppia. Tamps.	19.00																			
X. C. Libramiento de Nuevo Laredo	47.00	1	0	2593	0.3	74.8	1.8	13.1	2.9	4.1	1.9	1.0	0.1	75.1	1.8	23.1	0.077	0.501	27.473850	-99.650217
Nuevo Laredo	51.00	1	0	16816	2.3	87.8	1.3	3.5	1.9	2.3	0.4	0.3	0.2	90.1	1.3	8.6	0.093	0.511	27.485691	-99.583259

46 CARR: Ent. Las Blancas - Rio Bravo

CLAVE: 28003

RUTA: TAM-003

AÑO: 2023

LUGAR	ESTACION				CLASIFICACION VEHICULAR EN PORCIENTO														COORDENADAS	
	KM	TE	SC	TDPA	M	A	B	C2	C3	T3S2	T3S3	T3S2R4	OTROS	A	B	C	K'	D	LATITUD	LONGITUD
T. C. Cd. Victoria - Matamoros	0.00	3	0	3660	0.6	86.0	0.4	10.2	0.3	2.0	0.2	0.1	0.2	86.6	0.4	13.0	0.083	0.512	25.665956	-97.604367
Valle Hermoso	21.00	1	1	2833	1.2	81.6	1.2	13.2	0.9	1.1	0.6	0.1	0.1	82.8	1.2	16.0	0.065	0.501	25.666721	-97.769374
Valle Hermoso	21.00	1	2	2823	0.9	82.2	0.9	13.1	0.9	1.1	0.7	0.1	0.1	83.1	0.9	16.0	0.072	0.501	25.666633	-97.769382
Rio Bravo	91.00	1	0	8529	2.0	78.3	1.6	11.3	1.2	3.0	1.4	0.7	0.5	80.3	1.6	18.1	0.075	0.539	25.976422	-98.118743

47 CARR: La Joya - Méndez

CLAVE: 28623

RUTA: TAM

AÑO: 2023

LUGAR	ESTACION				CLASIFICACION VEHICULAR EN PORCIENTO														COORDENADAS	
	KM	TE	SC	TDPA	M	A	B	C2	C3	T3S2	T3S3	T3S2R4	OTROS	A	B	C	K'	D	LATITUD	LONGITUD
T. C. Cd. Victoria - Matamoros	0.00	3	0	862	1.4	88.1	1.6	4.4	1.5	1.3	0.6	0.4	0.7	89.5	1.6	8.9	0.076	0.511	24.932300	-98.118846
Méndez	66.00																			

48 CARR: Libramiento de Cd. Victoria

CLAVE: 28282

RUTA: TAM

AÑO: 2023

LUGAR	ESTACION				CLASIFICACION VEHICULAR EN PORCIENTO														COORDENADAS	
	KM	TE	SC	TDPA	M	A	B	C2	C3	T3S2	T3S3	T3S2R4	OTROS	A	B	C	K'	D	LATITUD	LONGITUD
X. C. Ent. Tula - Cd. Victoria	0.00	3	1	5968	11.9	84.9	0.5	1.2	0.6	0.2	0.3	0.3	0.1	96.8	0.5	2.7	0.072	0.542	23.713815	-99.177233
X. C. Ent. Tula - Cd. Victoria	0.00	3	2	7053	12.5	84.6	0.3	1.3	0.6	0.2	0.1	0.3	0.1	97.1	0.3	2.6	0.069	0.542	23.713679	-99.177379
X. C. Cd. Victoria - Matamoros	13.40	1	1	15768	4.9	91.9	0.8	1.0	0.7	0.3	0.2	0.1	0.1	96.8	0.8	2.4	0.090	0.518	23.773202	-99.132779
X. C. Cd. Victoria - Matamoros	13.40	1	2	14658	5.0	91.1	1.0	1.2	0.9	0.3	0.2	0.2	0.1	96.1	1.0	2.9	0.092	0.518	23.773516	-99.133606
X. C. Cd. Victoria - Matamoros	13.40	3	1	14562	5.3	89.6	1.1	1.5	1.2	0.6	0.2	0.4	0.1	94.9	1.1	4.0	0.115	0.521	23.763178	-99.111714
X. C. Cd. Victoria - Matamoros	13.40	3	2	13408	5.6	89.8	1.1	1.5	1.0	0.5	0.2	0.2	0.1	95.4	1.1	3.5	0.100	0.521	23.762871	-99.110533
X. C. Cd. Victoria - Soto La Marina	19.70	1	1	6002	7.6	85.0	0.7	3.1	1.7	0.7	0.6	0.5	0.1	92.6	0.7	6.7	0.097	0.509	23.729761	-99.092754
X. C. Cd. Victoria - Soto La Marina	19.70	1	2	5798	7.5	85.1	0.6	3.1	1.7	0.7	0.6	0.6	0.1	92.6	0.6	6.8	0.095	0.509	23.729748	-99.092656
T. C. Cd. Valles - Cd. Victoria	25.90	1	1	1408	3.2	77.2	2.4	3.4	4.2	3.4	3.0	2.6	0.6	80.4	2.4	17.2	0.074	0.510	23.678213	-99.098482
T. C. Cd. Valles - Cd. Victoria	25.90	1	2	1353	3.0	77.5	2.4	3.2	4.3	3.7	2.6	2.6	0.7	80.5	2.4	17.1	0.107	0.510	23.678184	-99.098169

TAMAULIPAS

49 CARR: Libramiento de Mier

CLAVE: 28282

RUTA: TAMPS

AÑO: 2023

LUGAR	ESTACION				CLASIFICACION VEHICULAR EN PORCIENTO														COORDENADAS	
	KM	TE	SC	TDPA	M	A	B	C2	C3	T3S2	T3S3	T3S2R4	OTROS	A	B	C	K'	D	LATITUD	LONGITUD
T. C. Monterrey - Mier	0.00	3	0	713	2.5	65.5	2.6	11.8	4.9	5.5	2.0	4.9	0.3	68.0	2.6	29.4	0.125	0.518	26.428044	-99.163352
T. C. Reynosa - Nuevo Laredo	2.70																			

50 CARR: Libramiento de Nuevo Laredo

CLAVE: 28030

RUTA: TAM

AÑO: 2023

LUGAR	ESTACION				CLASIFICACION VEHICULAR EN PORCIENTO														COORDENADAS	
	KM	TE	SC	TDPA	M	A	B	C2	C3	T3S2	T3S3	T3S2R4	OTROS	A	B	C	K'	D	LATITUD	LONGITUD
T. C. Monterrey - Nuevo Laredo	0.00	3	1	19571	3.5	72.8	2.2	3.2	6.8	8.6	1.1	1.3	0.5	76.3	2.2	21.5	0.085	0.502	27.426287	-99.537639
T. C. Monterrey - Nuevo Laredo	0.00	3	2	19404	3.7	72.6	2.4	3.0	6.6	9.0	1.3	1.0	0.4	76.3	2.4	21.3	0.092	0.502	27.426151	-99.537657
T. C. Piedras Negras - Nuevo Laredo	18.00	1	1	3827	4.3	39.2	2.1	6.2	12.1	33.4	1.1	1.1	0.5	43.5	2.1	54.4	0.111	0.504	27.526762	-99.581814
T. C. Piedras Negras - Nuevo Laredo	18.00	1	2	3769	4.1	39.6	2.1	6.2	12.1	33.4	1.0	1.0	0.5	43.7	2.1	54.2	0.096	0.504	27.526753	-99.581875

51 CARR: Libramiento de Nuevo Laredo II

CLAVE: 28626

RUTA: TAM

AÑO: 2023

LUGAR	ESTACION				CLASIFICACION VEHICULAR EN PORCIENTO														COORDENADAS	
	KM	TE	SC	TDPA	M	A	B	C2	C3	T3S2	T3S3	T3S2R4	OTROS	A	B	C	K'	D	LATITUD	LONGITUD
T. C. Monterrey - Nuevo Laredo	0.00	3	0	9768	6.3	13.7	5.6	6.0	5.5	57.4	1.1	3.6	0.8	20.0	5.6	74.4	0.077	0.501	27.308846	-99.608342
T. C. Piedras Negras - Nuevo Laredo	32.20	1	1	5666	1.8	33.4	0.6	6.3	11.2	40.4	3.5	1.9	0.9	35.2	0.6	64.2	0.080	0.513	27.563096	-99.595966
T. C. Piedras Negras - Nuevo Laredo	32.20	1	2	5974	1.8	28.4	0.6	6.4	11.2	45.4	3.4	1.9	0.9	30.2	0.6	69.2	0.093	0.513	27.562900	-99.596746

52 CARR: Libramiento de Río Bravo

CLAVE: 28002

RUTA: TAM

AÑO: 2023

LUGAR	ESTACION				CLASIFICACION VEHICULAR EN PORCIENTO														COORDENADAS	
	KM	TE	SC	TDPA	M	A	B	C2	C3	T3S2	T3S3	T3S2R4	OTROS	A	B	C	K'	D	LATITUD	LONGITUD
T. C. Matamoros - Reynosa (1° Acceso)	0.00	3	1	2958	2.1	82.6	1.7	3.3	2.7	4.3	1.3	1.6	0.4	84.7	1.7	13.6	0.089	0.504	25.971636	-98.052588
T. C. Matamoros - Reynosa (1° Acceso)	0.00	3	2	3001	2.4	80.7	2.0	3.5	3.1	4.6	1.5	1.8	0.4	83.1	2.0	14.9	0.093	0.504	25.971532	-98.052587
T. C. Matamoros - Reynosa (2° Acceso)	13.10	1	1	7928	1.8	86.7	2.1	2.5	2.2	2.8	0.6	0.9	0.4	88.5	2.1	9.4	0.135	0.556	25.989254	-98.125790
T. C. Matamoros - Reynosa (2° Acceso)	13.10	1	2	9912	1.6	85.8	2.3	2.9	2.5	2.6	0.6	1.3	0.4	87.4	2.3	10.3	0.096	0.556	25.989199	-98.125866

53 CARR: Los Guerra - Los Herreras

CLAVE: 19031

RUTA: TAM-NL

AÑO: 2023

LUGAR	ESTACION				CLASIFICACION VEHICULAR EN PORCIENTO														COORDENADAS	
	KM	TE	SC	TDPA	M	A	B	C2	C3	T3S2	T3S3	T3S2R4	OTROS	A	B	C	K'	D	LATITUD	LONGITUD
Los Guerra	0.00																			
Lim. Edos. Term. Tamps. Ppia. N. L.	46.00																			

TAMAULIPAS

53 CARR: Los Guerra - Los Herreras

CLAVE: 19031

RUTA: TAM-NL

AÑO: 2023

LUGAR	ESTACION				CLASIFICACION VEHICULAR EN PORCIENTO														COORDENADAS	
	KM	TE	SC	TDPA	M	A	B	C2	C3	T3S2	T3S3	T3S2R4	OTROS	A	B	C	K'	D	LATITUD	LONGITUD
Los Herreras	73.00	1	0	733	1.2	81.0	1.0	14.0	1.0	1.1	0.7	0.0	0.0	82.2	1.0	16.8	0.107	0.518	25.902622	-99.393499

54 CARR: Peña Blanca - Cd. Camargo

CLAVE: 00102

RUTA: NL-TAM

AÑO: 2023

LUGAR	ESTACION				CLASIFICACION VEHICULAR EN PORCIENTO														COORDENADAS	
	KM	TE	SC	TDPA	M	A	B	C2	C3	T3S2	T3S3	T3S2R4	OTROS	A	B	C	K'	D	LATITUD	LONGITUD
T. C. Monterrey - Reynosa	0.00	3	0	367	0.8	77.9	1.1	12.8	1.3	2.3	3.3	0.3	0.2	78.7	1.1	20.2	0.103	0.506	25.836304	-99.008481
Lim. Edos. Term. N. L. Ppia. Tamps.	30.00																			
Cd. Camargo	65.00	1	0	2932	3.3	83.3	0.8	1.9	3.4	4.7	1.6	0.8	0.2	86.6	0.8	12.6	0.076	0.502	26.304258	-98.834754

55 CARR: Potrero Nuevo - Rancho El Mezquital

CLAVE: 28615

RUTA: TAM

AÑO: 2023

LUGAR	ESTACION				CLASIFICACION VEHICULAR EN PORCIENTO														COORDENADAS	
	KM	TE	SC	TDPA	M	A	B	C2	C3	T3S2	T3S3	T3S2R4	OTROS	A	B	C	K'	D	LATITUD	LONGITUD
T. C. Cd. Victoria - Matamoros	0.00	3	0	1596	0.3	75.1	0.8	10.3	2.0	2.3	2.5	6.6	0.1	75.4	0.8	23.8	0.097	0.509	25.713003	-97.570278
Puerto El Mezquital	66.00																			

56 CARR: Ramal a Gómez Farías

CLAVE: 28020

RUTA: TAM-020

AÑO: 2023

LUGAR	ESTACION				CLASIFICACION VEHICULAR EN PORCIENTO														COORDENADAS	
	KM	TE	SC	TDPA	M	A	B	C2	C3	T3S2	T3S3	T3S2R4	OTROS	A	B	C	K'	D	LATITUD	LONGITUD
T. C. Cd. Valles - Cd. Victoria	0.00	3	0	1646	21.6	75.7	0.4	1.1	0.7	0.3	0.1	0.1	0.0	97.3	0.4	2.3	0.119	0.503	23.023672	-99.094588
Gómez Farías	11.00	1	0	1133	22.7	69.4	0.3	6.4	0.2	0.8	0.2	0.0	0.0	92.1	0.3	7.6	0.132	0.500	23.025427	-99.143299

57 CARR: Ramal a Xicoténcatl

CLAVE: 28619

RUTA: TAM

AÑO: 2023

LUGAR	ESTACION				CLASIFICACION VEHICULAR EN PORCIENTO														COORDENADAS	
	KM	TE	SC	TDPA	M	A	B	C2	C3	T3S2	T3S3	T3S2R4	OTROS	A	B	C	K'	D	LATITUD	LONGITUD
T. C. Cd. Valles - Cd. Victoria	0.00	3	0	1710	14.1	79.8	0.4	2.2	3.0	0.3	0.0	0.2	0.0	93.9	0.4	5.7	0.083	0.509	22.943824	-99.010221
Xicoténcatl	13.00	1	0	4453	11.1	81.0	1.1	1.9	1.1	1.3	0.4	1.9	0.2	92.1	1.1	6.8	0.078	0.540	22.985598	-98.948783

TAMAULIPAS

58 CARR: San Fernando - Carboneras

CLAVE: 28618

RUTA: TAM

AÑO: 2023

LUGAR	ESTACION				CLASIFICACION VEHICULAR EN PORCIENTO														COORDENADAS	
	KM	TE	SC	TDPA	M	A	B	C2	C3	T3S2	T3S3	T3S2R4	OTROS	A	B	C	K'	D	LATITUD	LONGITUD
San Fernando	0.00	3	0	3038	3.5	91.1	0.3	1.2	1.2	1.3	1.3	0.1	0.0	94.6	0.3	5.1	0.080	0.513	24.834470	-98.113223
Carboneras	57.00																			

59 CARR: Soto La Marina - La Pesca

CLAVE: 28049

RUTA: TAM-070

AÑO: 2023

LUGAR	ESTACION				CLASIFICACION VEHICULAR EN PORCIENTO														COORDENADAS	
	KM	TE	SC	TDPA	M	A	B	C2	C3	T3S2	T3S3	T3S2R4	OTROS	A	B	C	K'	D	LATITUD	LONGITUD
T. C. Soto La Marina - La Coma	0.00	3	0	2265	0.6	95.4	0.6	2.3	0.5	0.5	0.1	0.0	0.0	96.0	0.6	3.4	0.143	0.512	23.781783	-98.182761
La Pesca	50.00																			

60 CARR: T. C. (Valle Hermoso - Empalme) - Matamoros

CLAVE: 28005

RUTA: TAM-005

AÑO: 2023

LUGAR	ESTACION				CLASIFICACION VEHICULAR EN PORCIENTO														COORDENADAS	
	KM	TE	SC	TDPA	M	A	B	C2	C3	T3S2	T3S3	T3S2R4	OTROS	A	B	C	K'	D	LATITUD	LONGITUD
T. C. Valle Hermoso - Empalme	0.00	3	0	4036	2.4	85.0	0.8	9.8	0.9	0.5	0.2	0.3	0.1	87.4	0.8	11.8	0.091	0.522	25.775073	-97.793203
Anáhuac	2.00	3	0	1566	0.9	88.2	0.4	9.0	0.9	0.2	0.1	0.2	0.1	89.1	0.4	10.5	0.107	0.505	25.775079	-97.765496
Matamoros	33.90	1	1	11695	4.9	87.2	1.4	2.7	1.0	1.0	0.4	1.1	0.3	92.1	1.4	6.5	0.074	0.514	25.864306	-97.576648
Matamoros	33.90	1	2	11054	4.7	87.3	1.3	2.4	1.1	1.4	0.3	1.1	0.4	92.0	1.3	6.7	0.068	0.514	25.864380	-97.576658

61 CARR: T. C. Libramiento Cd. Victoria - San Antonio

CLAVE:

RUTA: TAM-126

AÑO: 2023

LUGAR	ESTACION				CLASIFICACION VEHICULAR EN PORCIENTO														COORDENADAS	
	KM	TE	SC	TDPA	M	A	B	C2	C3	T3S2	T3S3	T3S2R4	OTROS	A	B	C	K'	D	LATITUD	LONGITUD
T. C. Libramiento Cd. Victoria	0.00	3	0	5509	3.6	58.7	4.3	3.1	1.5	14.5	2.6	10.7	1.0	62.3	4.3	33.4	0.066	0.525	23.658751	-99.114887
San Antonio	37.50	1	0	4939	3.9	58.0	4.9	3.3	1.3	14.4	2.7	10.5	1.0	61.9	4.9	33.2	0.067	0.522	23.584493	-99.318307

62 CARR: Valle Hermoso - Empalme

CLAVE: 28004

RUTA: TAM-004

AÑO: 2023

LUGAR	ESTACION				CLASIFICACION VEHICULAR EN PORCIENTO														COORDENADAS	
	KM	TE	SC	TDPA	M	A	B	C2	C3	T3S2	T3S3	T3S2R4	OTROS	A	B	C	K'	D	LATITUD	LONGITUD
Valle Hermoso	0.00	3	0	8814	2.0	88.9	1.5	3.3	1.0	1.3	0.6	0.9	0.5	90.9	1.5	7.6	0.074	0.503	25.694264	-97.815876
Empalme	28.38	1	0	3976	0.2	80.3	2.1	14.0	1.2	0.4	0.4	1.1	0.3	80.5	2.1	17.4	0.097	0.506	25.873606	-97.795684



TAMAULIPAS

63 CARR: Valle Hermoso - Las Yescas

CLAVE: 28614

RUTA: TAM

AÑO: 2023

LUGAR	ESTACION				CLASIFICACION VEHICULAR EN PORCIENTO													COORDENADAS		
	KM	TE	SC	TDPA	M	A	B	C2	C3	T3S2	T3S3	T3S2R4	OTROS	A	B	C	K'	D	LATITUD	LONGITUD
Valle Hermoso	0.00	3	0	5145	1.7	85.7	1.7	1.9	0.9	2.6	1.5	3.2	0.8	87.4	1.7	10.9	0.097	0.505	25.577752	-97.816070
T. C. Cd. Victoria - Matamoros	26.00	1	0	2177	1.4	86.0	1.9	2.2	0.6	3.0	0.9	3.4	0.6	87.4	1.9	10.7	0.099	0.533	25.466233	-97.816238

64 CARR: Santander Jiménez - Ent. El Ojito

CLAVE: 28579

RUTA: MEX-107-TAM

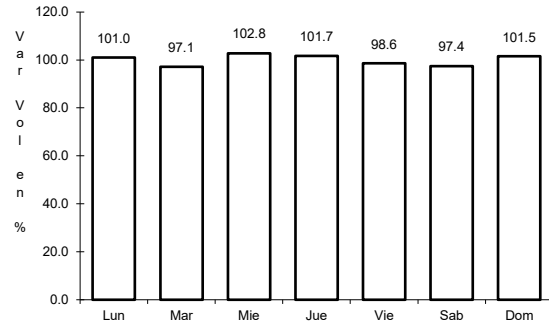
AÑO: 2023

LUGAR	ESTACION				CLASIFICACION VEHICULAR EN PORCIENTO													COORDENADAS		
	KM	TE	SC	TDPA	M	A	B	C2	C3	T3S2	T3S3	T3S2R4	OTROS	A	B	C	K'	D	LATITUD	LONGITUD
T. C. Cd. Victoria - Matamoros	0.00	3	0	1416	3.2	90.0	1.4	2.7	0.8	1.1	0.4	0.4	0.0	93.2	1.4	5.4	0.110	0.508	24.203641	-98.476563
Abasolo	20.00	1	0	2725	4.8	86.7	1.0	4.6	0.5	1.7	0.3	0.2	0.2	91.5	1.0	7.5	0.085	0.507	24.064905	-98.383184
T. C. Soto La Marina - La Coma	58.00	1	0	644	3.2	84.2	1.2	6.5	1.3	1.8	1.0	0.8	0.0	87.4	1.2	11.4	0.100	0.504	23.941751	-98.167151

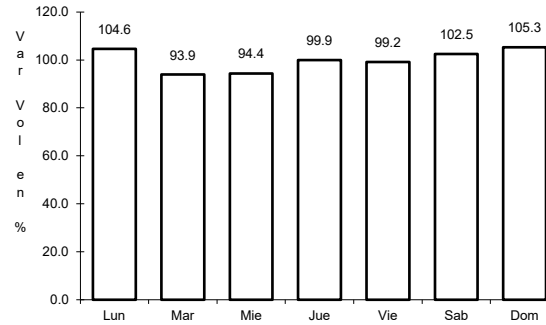
1 CARR: Acceso a Puente Internacional Reynosa - Pharr

CLAVE:

ruta: MEX-002



Km: 0.00 Tipo: 3 Sent: 1

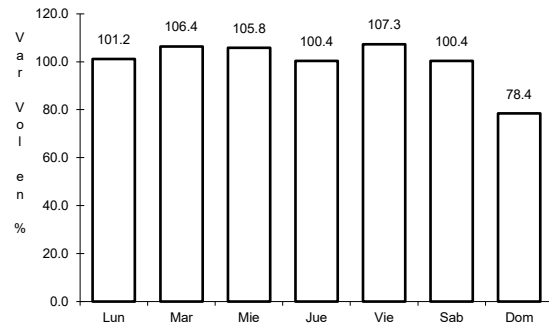


Km: 0.00 Tipo: 3 Sent: 2

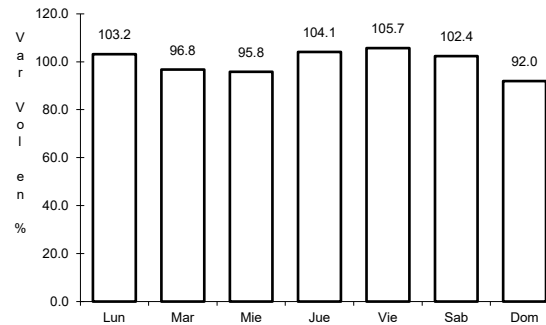
2 CARR: Altamira - T. C. (Petrocel -Puerto Industrial Altamira)

CLAVE:

ruta: MEX-080



Km: 0.00 Tipo: 3 Sent: 1

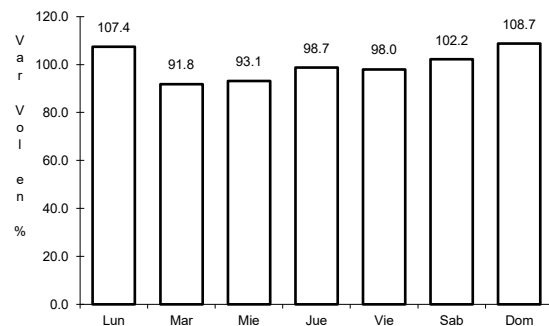


Km: 0.00 Tipo: 3 Sent: 2

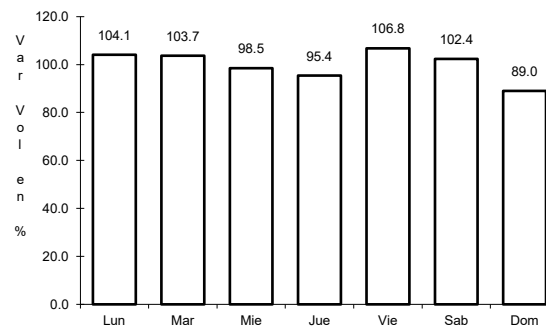
3 CARR: Antigua Morelos - Ent. El Huizache

CLAVE: 00136

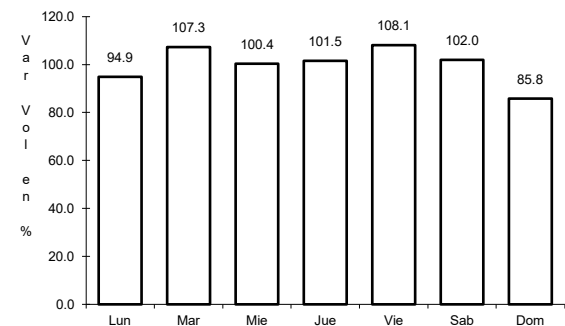
ruta: MEX-080



Km: 0.00 Tipo: 3 Sent: 0



Km: 86.00 Tipo: 3 Sent: 0

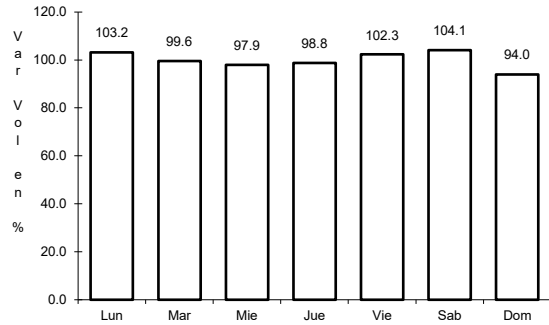


Km: 198.83 Tipo: 1 Sent: 0

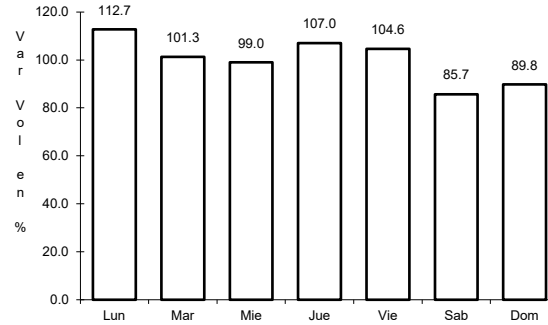
4 CARR: Cd. Valles - Cd. Victoria

CLAVE: 00509

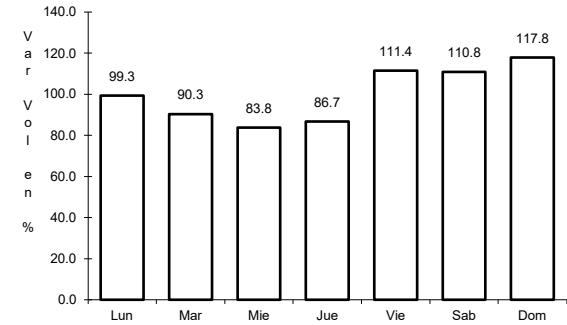
ruta: MEX-085



Km: 0.00      Tipo: 3      Sent: 0



Km: 110.00      Tipo: 3      Sent: 0

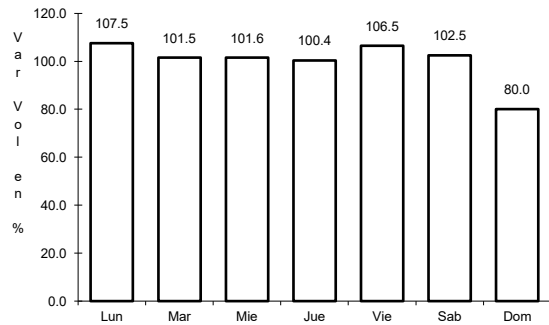


Km: 232.00      Tipo: 1      Sent: 0

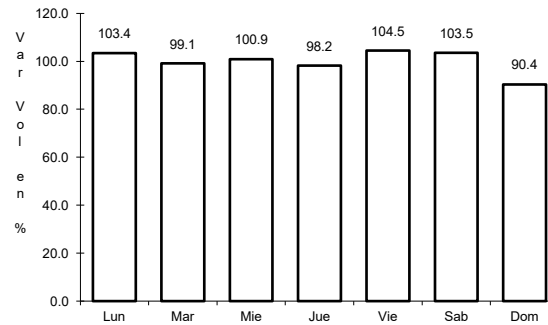
5 CARR: Cd. Valles - Tampico

CLAVE: 00138

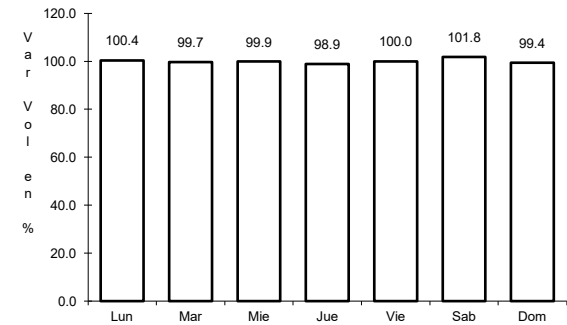
ruta: MEX-070



Km: 0.00      Tipo: 3      Sent: 0



Km: 138.00      Tipo: 1      Sent: 1

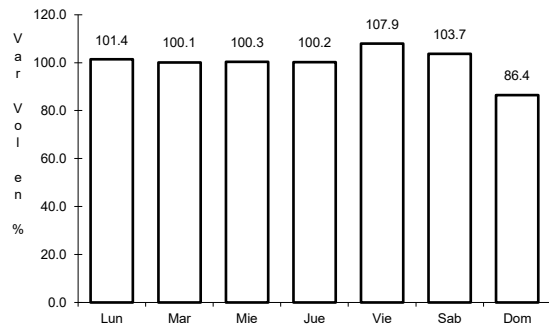


Km: 138.00      Tipo: 1      Sent: 2

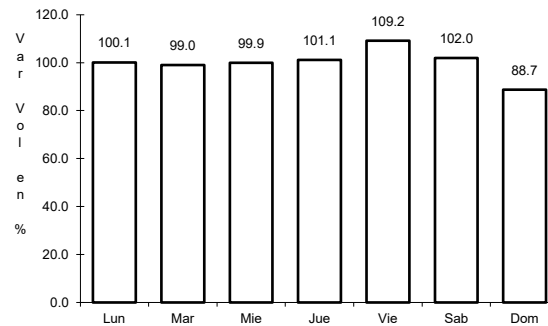
6 CARR: Cd. Victoria - Matamoros

CLAVE: 28139

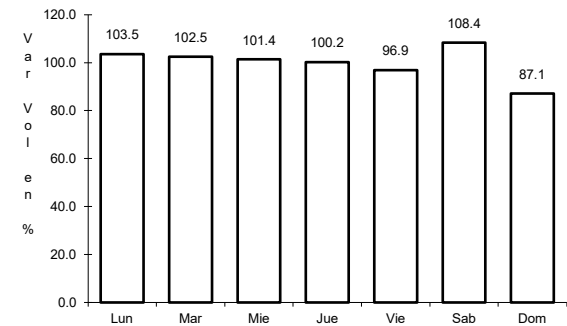
ruta: MEX-101-180



Km: 5.00      Tipo: 3      Sent: 1



Km: 5.00      Tipo: 3      Sent: 2

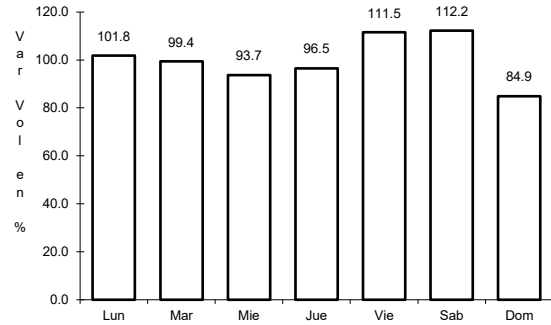


Km: 175.00      Tipo: 3      Sent: 0

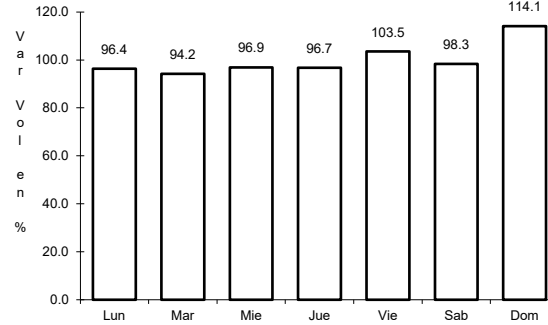
7 CARR: Cd. Victoria - Soto La Marina

CLAVE: 28009

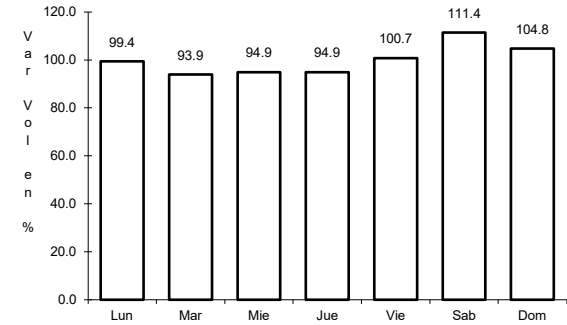
ruta: MEX-070



Km: 0.00      Tipo: 3      Sent: 1



Km: 0.00      Tipo: 3      Sent: 2

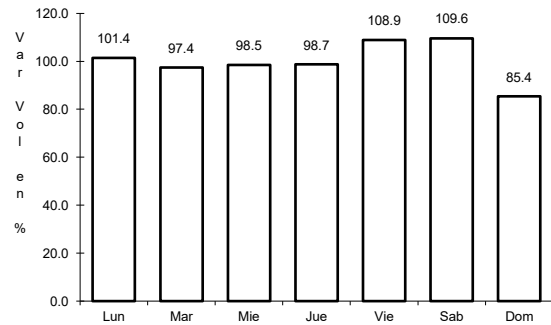


Km: 116.80      Tipo: 1      Sent: 0

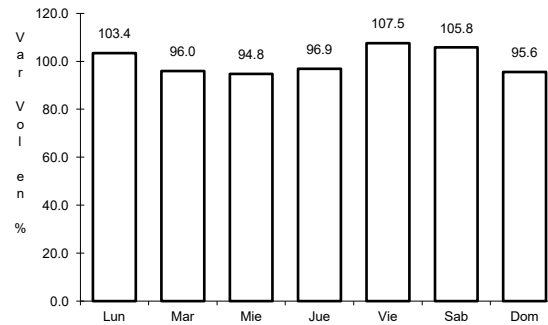
8 CARR: Ciudad Victoria - Monterrey

CLAVE: 00462

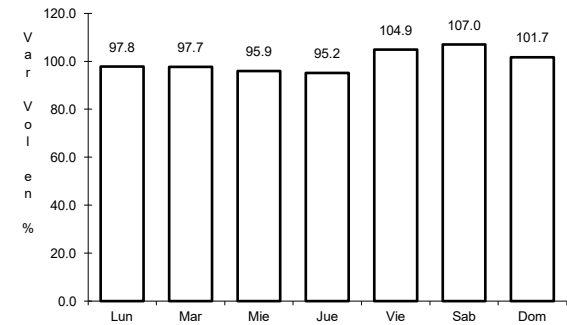
ruta: MEX-085



Km: 0.00      Tipo: 3      Sent: 1



Km: 0.00      Tipo: 3      Sent: 2

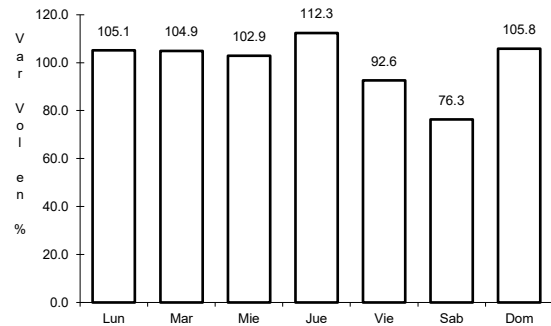


Km: 154.00      Tipo: 1      Sent: 0

9 CARR: Corredor Internacional Reynosa

CLAVE:

ruta: MEX

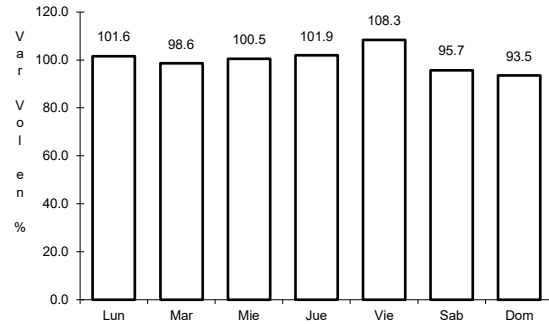


Km: 0.00      Tipo: 1      Sent: 0

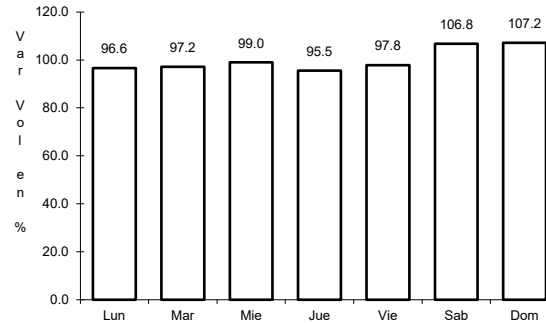
10 CARR: Ent. Tula - Cd. Victoria

CLAVE: 00179

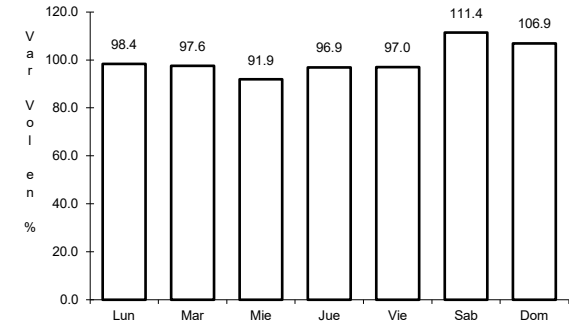
ruta: MEX-101



Km: 0.00      Tipo: 3      Sent: 0



Km: 180.00      Tipo: 1      Sent: 1

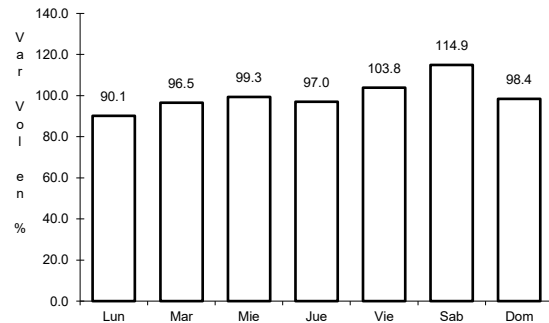


Km: 180.00      Tipo: 1      Sent: 2

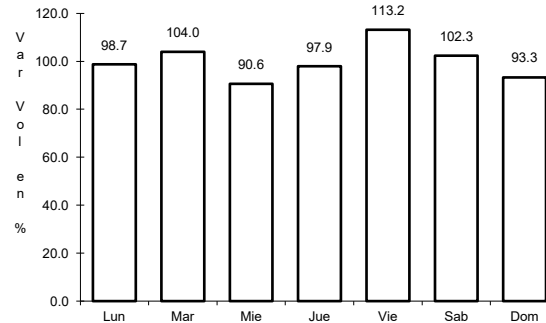
11 CARR: Estación Manuel - T. C. (Cd. Victoria - Soto La Marina)

CLAVE: 28294

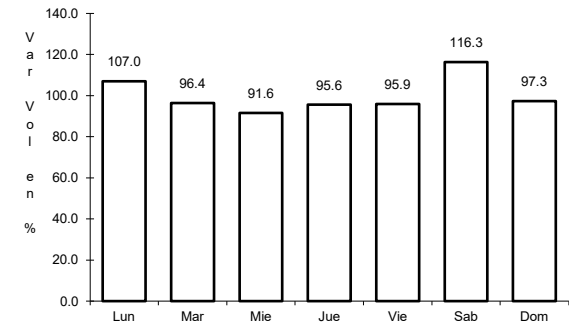
ruta: MEX-180



Km: 36.00      Tipo: 3      Sent: 0



Km: 69.00      Tipo: 3      Sent: 0

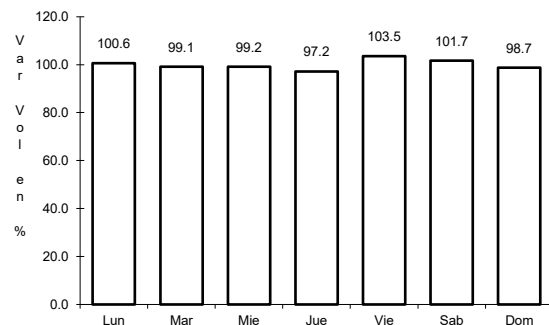


Km: 145.00      Tipo: 1      Sent: 0

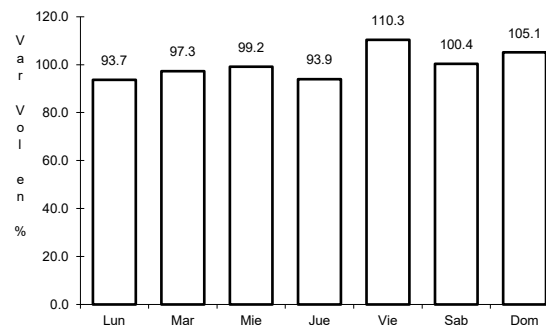
12 CARR: González - Llera de Canales

CLAVE: 28578

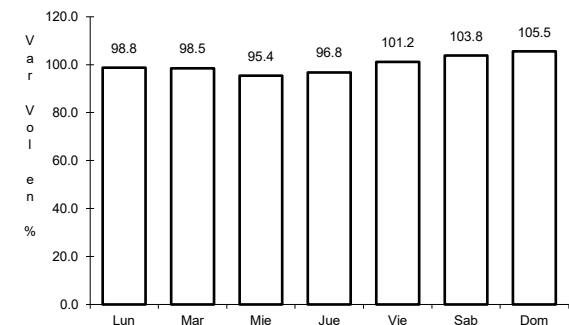
ruta: MEX-081



Km: 0.00      Tipo: 3      Sent: 0



Km: 58.50      Tipo: 1      Sent: 0

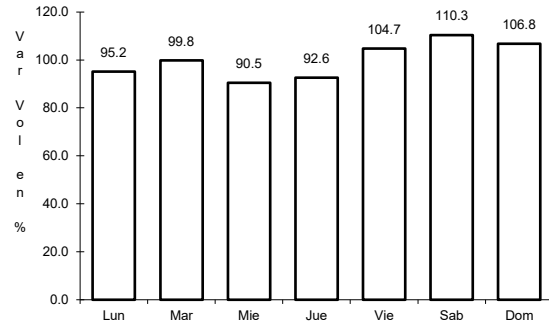


Km: 89.00      Tipo: 1      Sent: 0

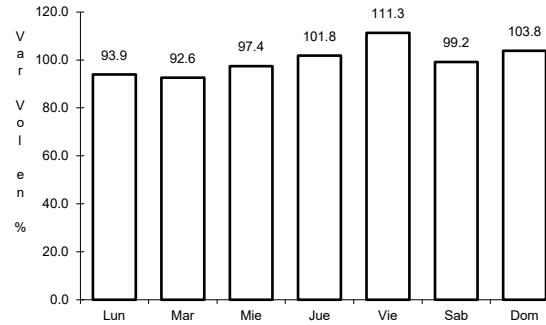
13 CARR: Ignacio Zaragoza - T. C. (Ciudad Victoria - Monterrey)

CLAVE: 28625

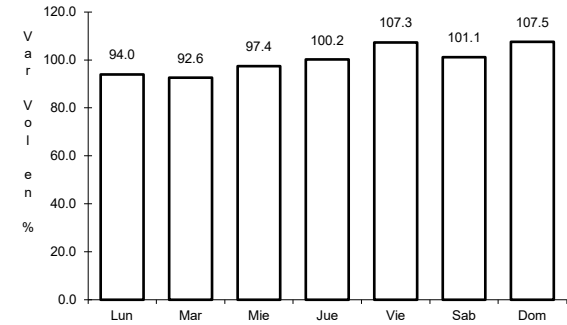
ruta: MEX-083



Km: 0.00 Tipo: 3 Sent: 0



Km: 63.45 Tipo: 3 Sent: 0

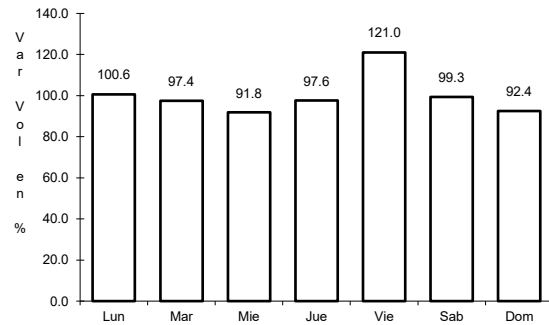


Km: 94.30 Tipo: 1 Sent: 0

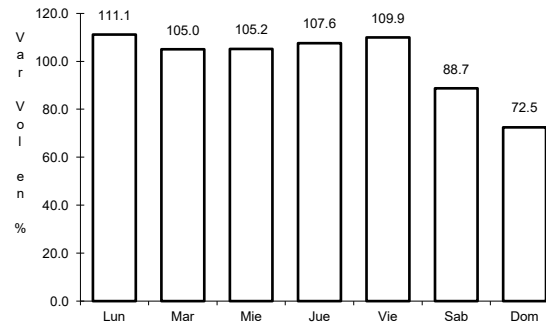
14 CARR: Las Urracas - T. C. (Matamoros - Reynosa)

CLAVE: 28029

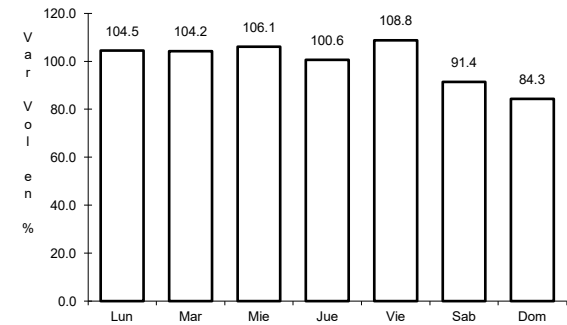
ruta: MEX-097



Km: 0.00 Tipo: 3 Sent: 0



Km: 113.25 Tipo: 1 Sent: 1

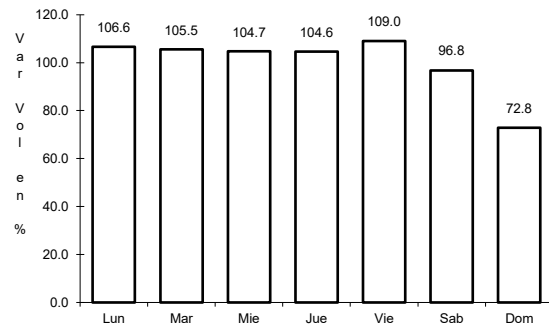


Km: 113.25 Tipo: 1 Sent: 2

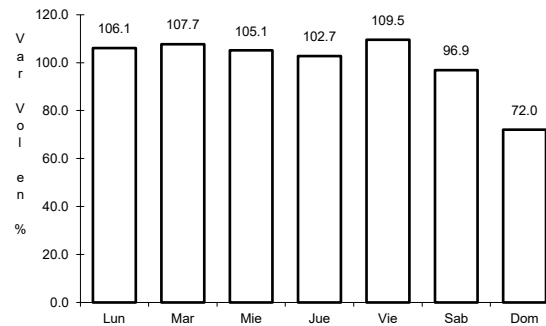
15 CARR: Libramiento de Reynosa

CLAVE: 28008

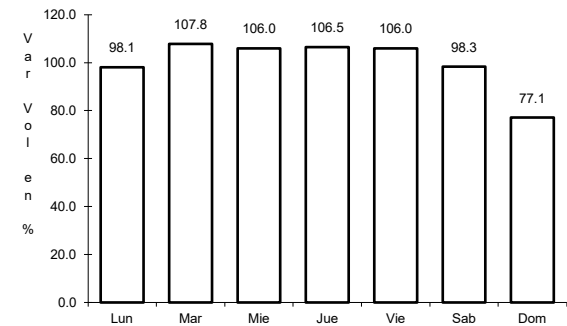
ruta: MEX-002



Km: 0.00 Tipo: 3 Sent: 1



Km: 0.00 Tipo: 3 Sent: 2

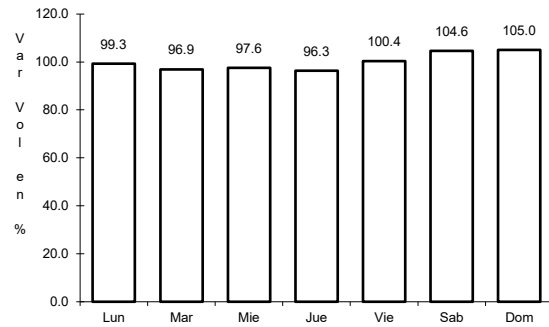


Km: 10.00 Tipo: 1 Sent: 1

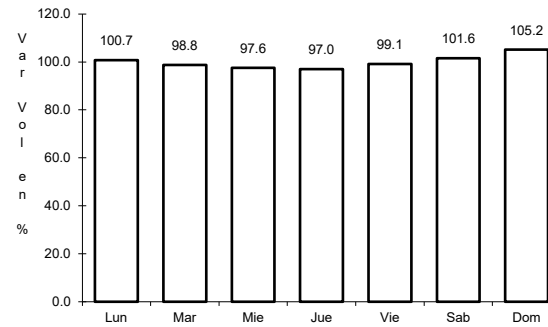
16 CARR: Libramiento de San Fernando

CLAVE:

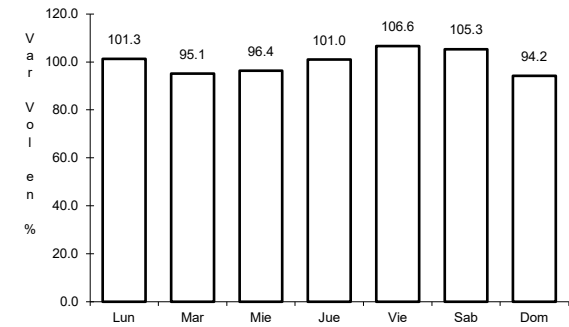
ruta: MEX-101-180



Km: 0.00                      Tipo: 3                      Sent: 0



Km: 14.39                      Tipo: 1                      Sent: 0

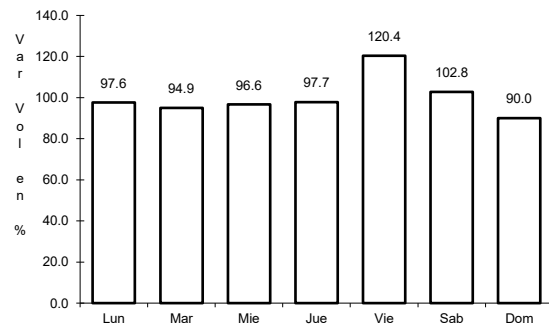


Km: 26.46                      Tipo: 1                      Sent: 0

17 CARR: Libramiento de San Germán

CLAVE:

ruta: MEX-101-180

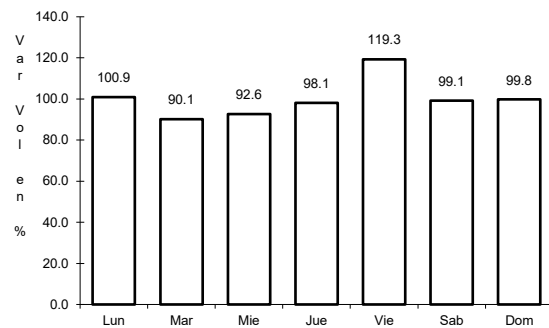


Km: 0.00                      Tipo: 3                      Sent: 0

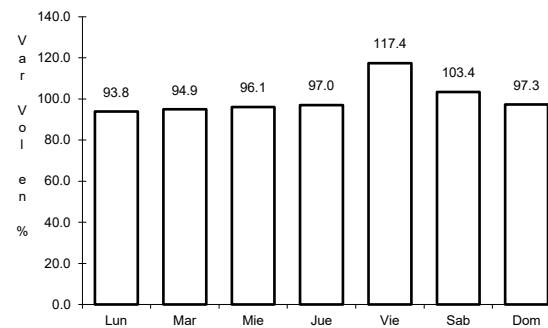
18 CARR: Libramiento de Santander Jiménez

CLAVE:

ruta: MEX-101



Km: 0.00                      Tipo: 3                      Sent: 0

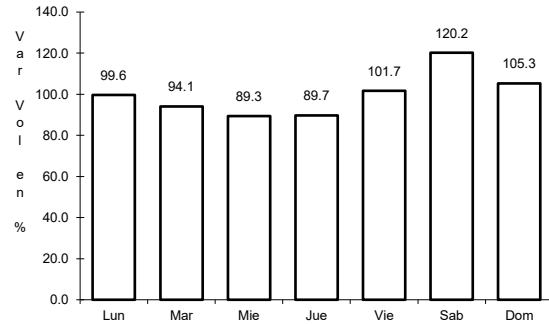


Km: 1.70                      Tipo: 3                      Sent: 0

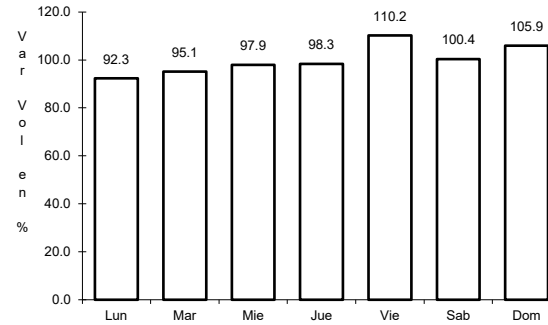
19 CARR: Libramiento Estación Manuel - González

CLAVE: 28002

RUTA: MEX-081



Km: 0.00      Tipo: 3      Sent: 0

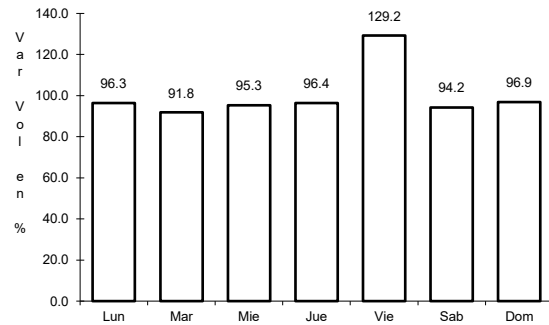


Km: 24.80      Tipo: 1      Sent: 0

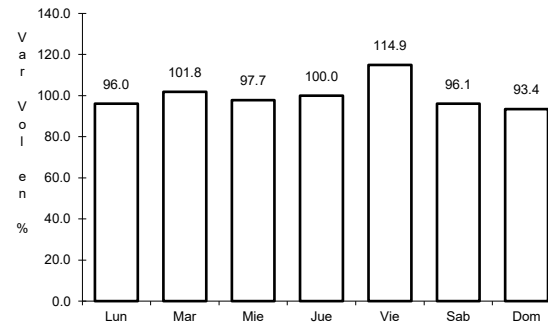
20 CARR: Libramiento General Francisco Villa

CLAVE:

RUTA: MEX-101-180



Km: 0.00      Tipo: 3      Sent: 0

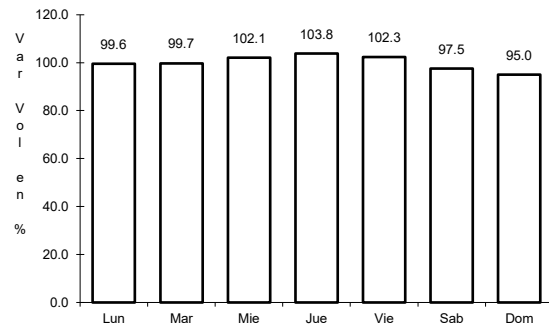


Km: 6.40      Tipo: 1      Sent: 0

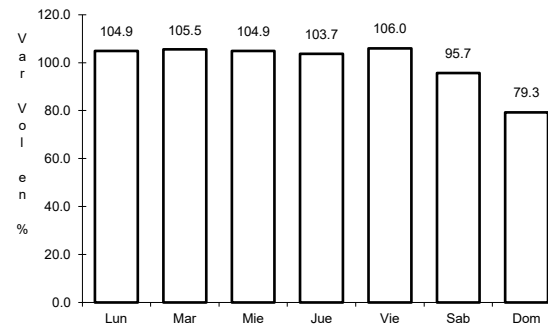
21 CARR: Matamoros - Playa Lauro Villar

CLAVE: 28078

RUTA: MEX-002



Km: 0.00      Tipo: 3      Sent: 1



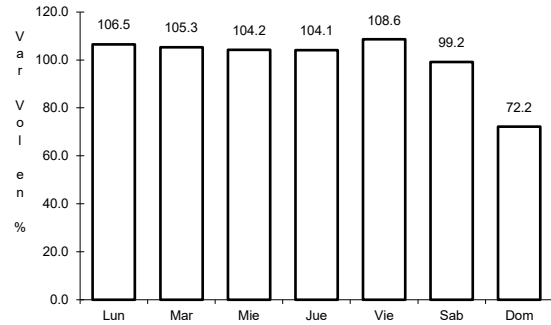
Km: 0.00      Tipo: 3      Sent: 2



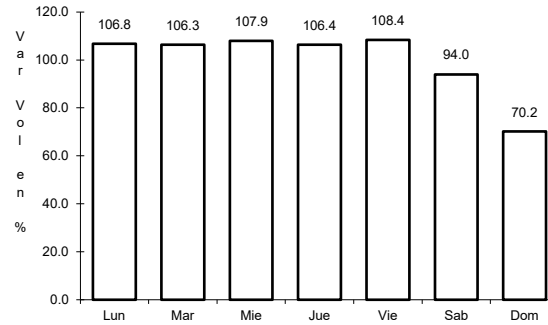
22 CARR: Matamoros - Reynosa

CLAVE: 28077

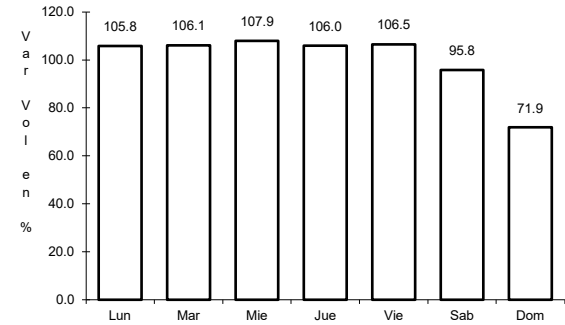
RUTA: MEX-002



Km: 0.00      Tipo: 3      Sent: 0



Km: 98.00      Tipo: 1      Sent: 1

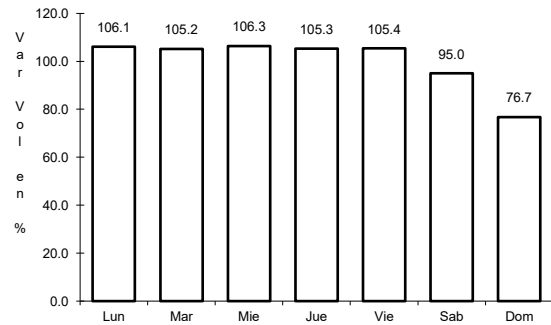


Km: 98.00      Tipo: 1      Sent: 2

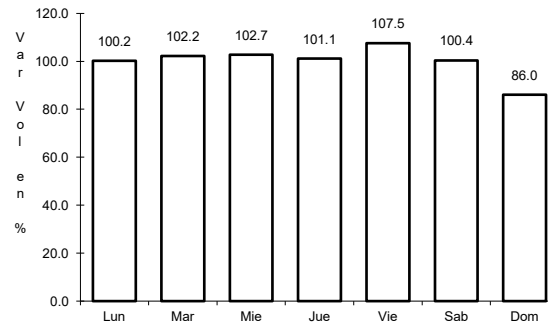
23 CARR: Monterrey - Mier

CLAVE: 00127

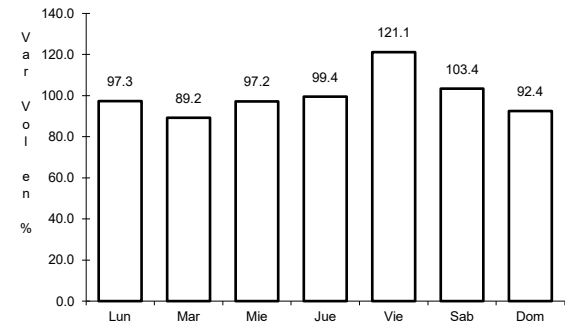
RUTA: MEX-054



Km: 19.12      Tipo: 1      Sent: 1



Km: 19.12      Tipo: 1      Sent: 2

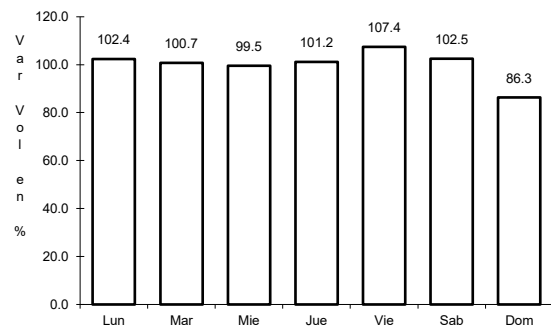


Km: 156.21      Tipo: 1      Sent: 0

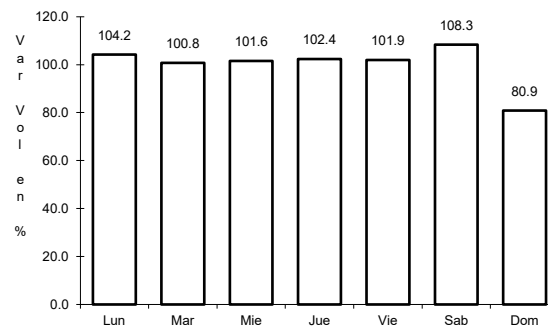
24 CARR: Monterrey - Nuevo Laredo (Libre)

CLAVE: 00463

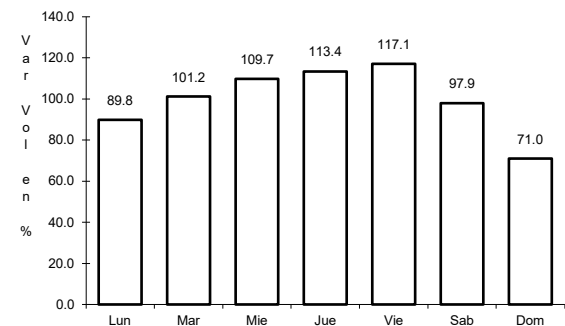
RUTA: MEX-085



Km: 12.10      Tipo: 3      Sent: 1



Km: 12.10      Tipo: 3      Sent: 2

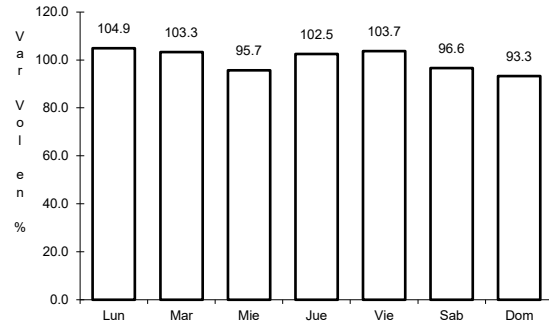


Km: 124.40      Tipo: 3      Sent: 0

25 CARR: Monterrey - Reynosa (Libre)

CLAVE: 00088

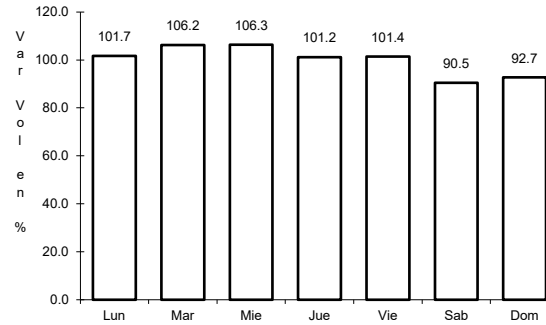
ruta: MEX-040



Km: 19.10

Tipo: 1

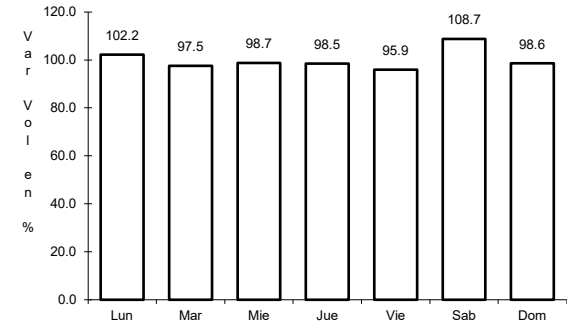
Sent: 1



Km: 19.10

Tipo: 1

Sent: 2



Km: 125.00

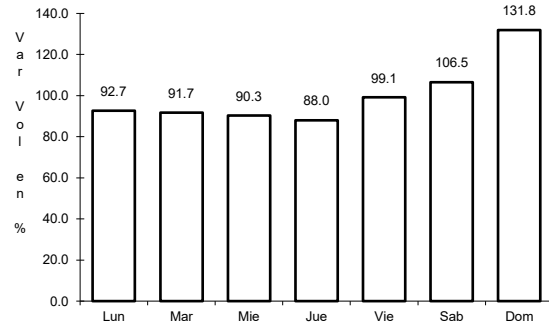
Tipo: 1

Sent: 0

26 CARR: Paras - Nueva Ciudad Guerrero

CLAVE: 00476

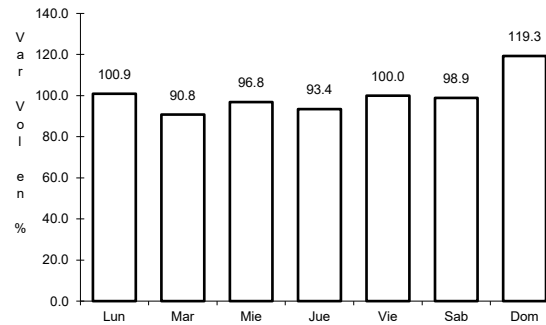
ruta: MEX-030



Km: 0.00

Tipo: 3

Sent: 0



Km: 32.00

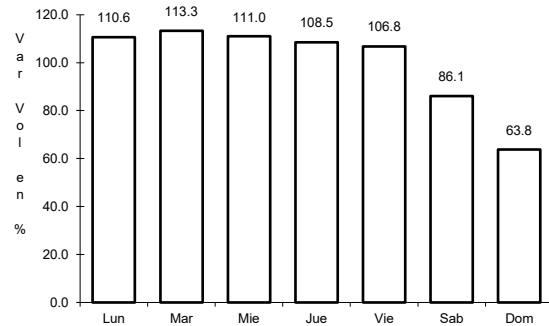
Tipo: 1

Sent: 0

27 CARR: Petrocel - Puerto Industrial Altamira

CLAVE:

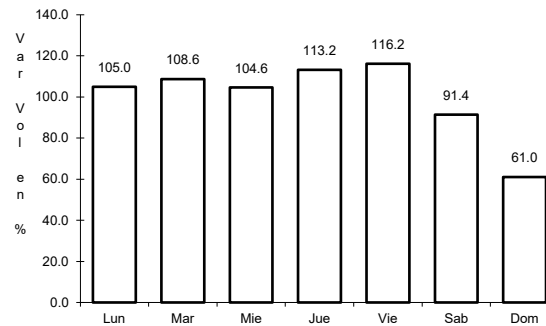
ruta: MEX-080



Km: 0.00

Tipo: 3

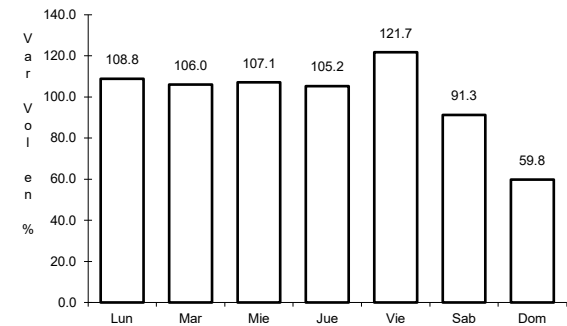
Sent: 1



Km: 0.00

Tipo: 3

Sent: 2



Km: 3.80

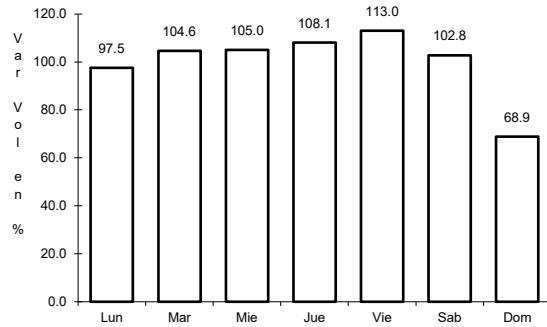
Tipo: 3

Sent: 1

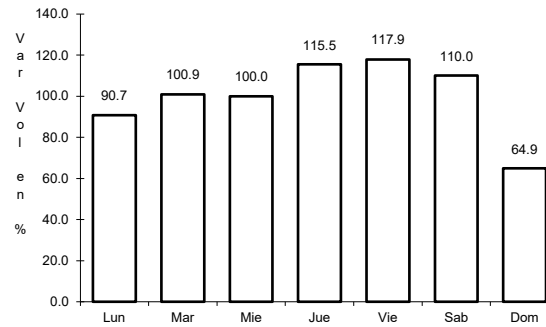
28 CARR: Piedras Negras - Nuevo Laredo

CLAVE: 00503

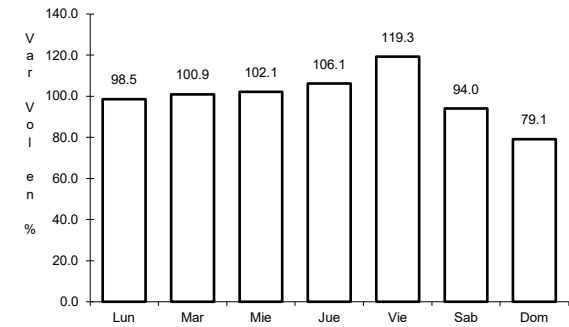
ruta: MEX-002



Km: 0.00      Tipo: 3      Sent: 1



Km: 0.00      Tipo: 3      Sent: 2

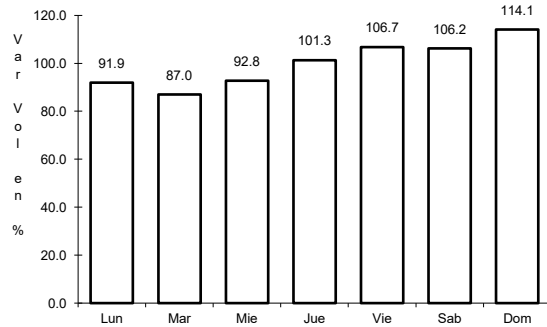


Km: 134.00      Tipo: 3      Sent: 0

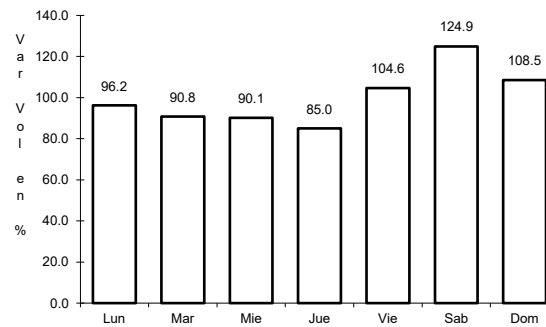
29 CARR: Ramal a Puente Tampico

CLAVE: 28020

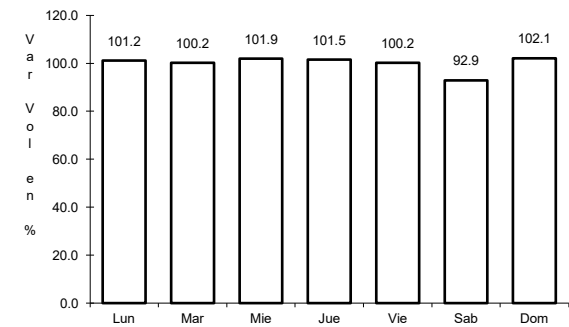
ruta: MEX-180



Km: 186.00      Tipo: 3      Sent: 1



Km: 186.00      Tipo: 3      Sent: 2

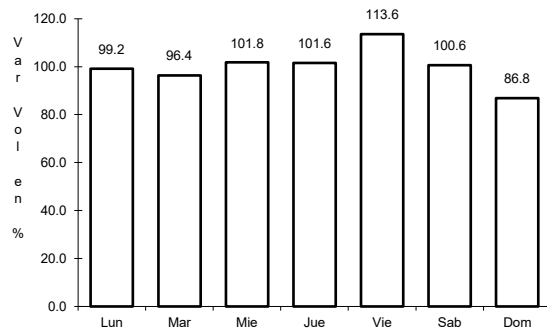


Km: 193.12      Tipo: 1      Sent: 1

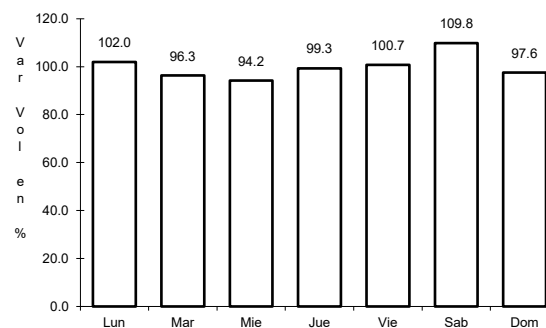
30 CARR: Ramal de Acceso a Puente Anzaldúas

CLAVE: 28619

ruta: MEX



Km: 0.00      Tipo: 3      Sent: 1

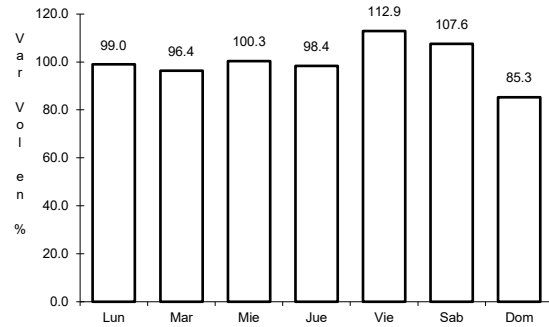


Km: 0.00      Tipo: 3      Sent: 2

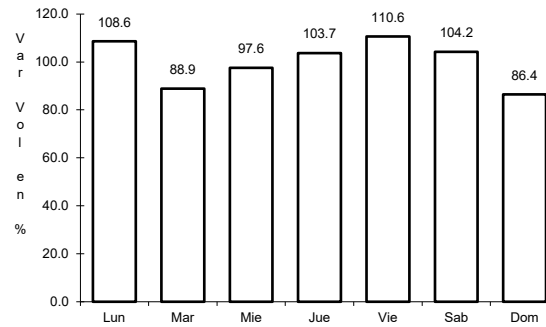
32 CARR: Reynosa - Nuevo Laredo

CLAVE: 28076

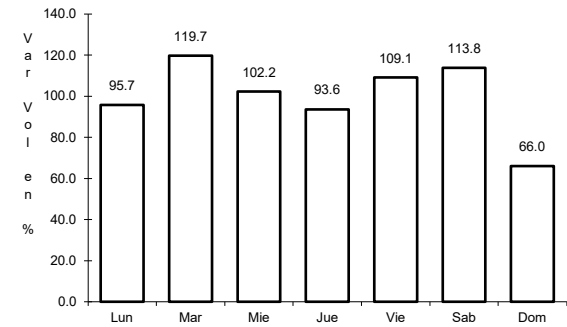
ruta: MEX-002



Km: 0.00      Tipo: 3      Sent: 1



Km: 0.00      Tipo: 3      Sent: 2

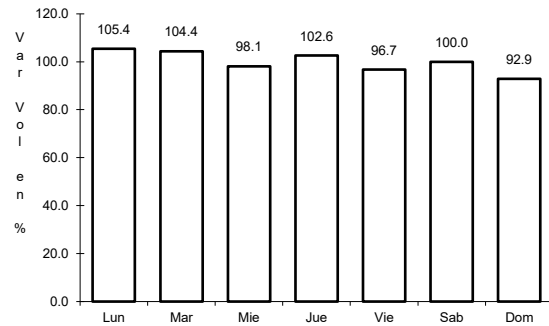


Km: 221.08      Tipo: 1      Sent: 0

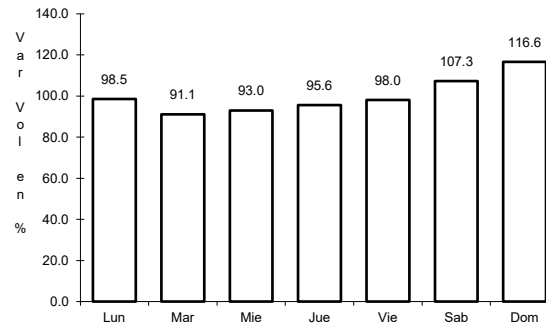
33 CARR: Soto La Marina - La Coma

CLAVE: 28052

ruta: MEX-180



Km: 0.00      Tipo: 3      Sent: 0

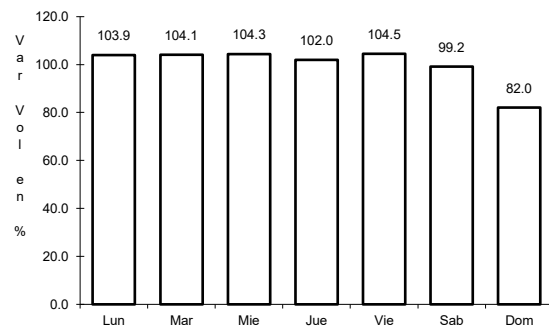


Km: 86.00      Tipo: 1      Sent: 0

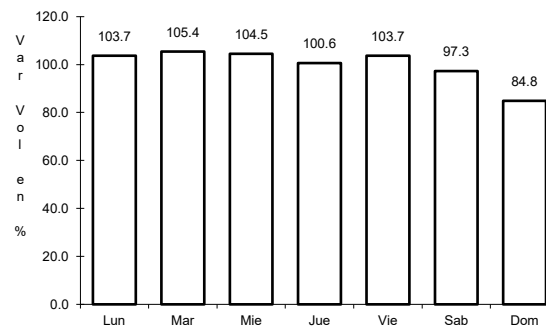
34 CARR: Tampico - Cd. Mante

CLAVE: 28163

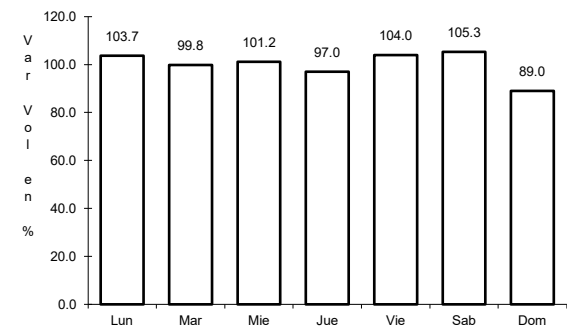
ruta: MEX-080



Km: 14.79      Tipo: 1      Sent: 1



Km: 14.79      Tipo: 1      Sent: 2

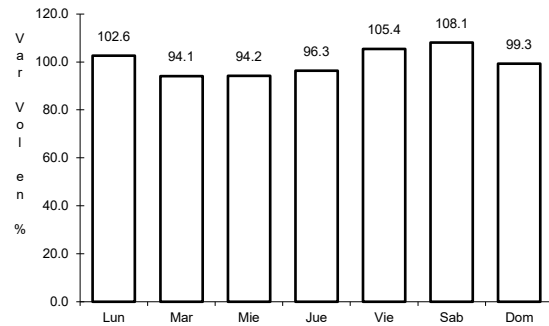


Km: 155.00      Tipo: 1      Sent: 0

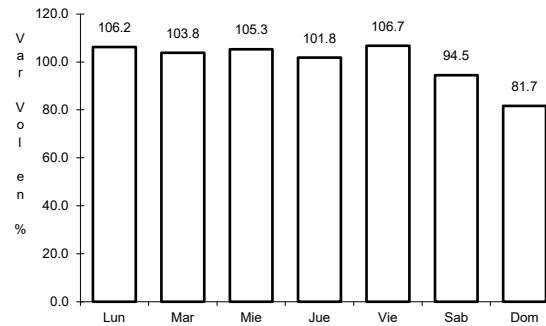
35 CARR: Túxpam - Tampico

CLAVE: 00529

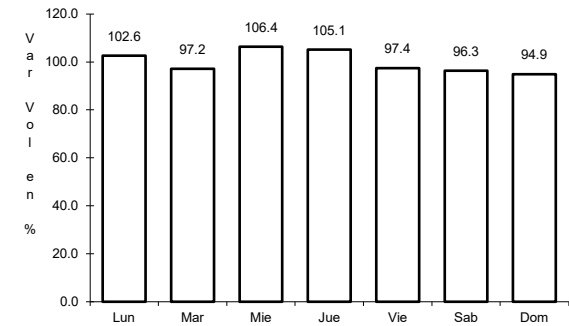
ruta: MEX-180



Km: 0.00      Tipo: 3      Sent: 0



Km: 78.60      Tipo: 1      Sent: 0

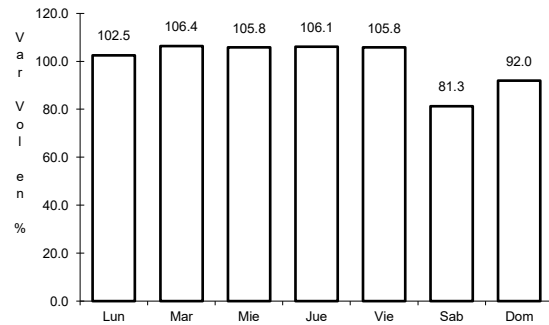


Km: 186.85      Tipo: 3      Sent: 1

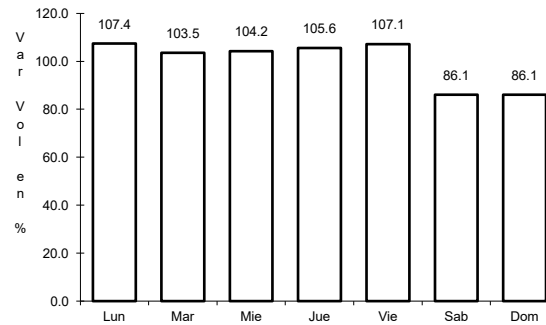
36 CARR: Viaducto de Reynosa

CLAVE:

ruta: MEX



Km: 80.50      Tipo: 3      Sent: 0

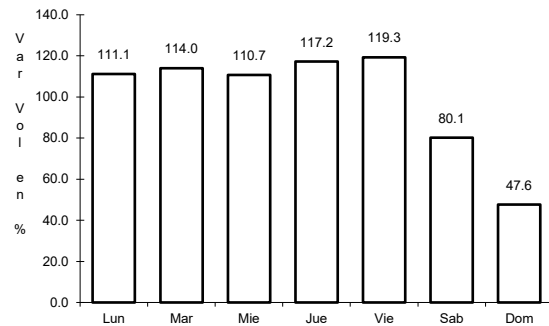


Km: 95.40      Tipo: 1      Sent: 0

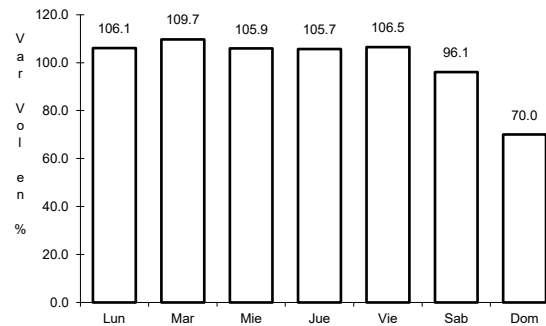
37 CARR: Libramiento de Reynosa Sur II

CLAVE:

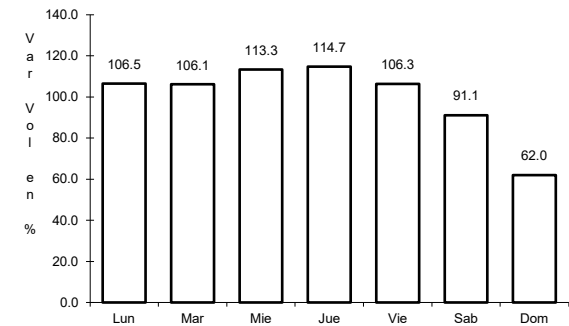
ruta: MEX-040D



Km: 0.00      Tipo: 3      Sent: 1



Km: 0.00      Tipo: 3      Sent: 2

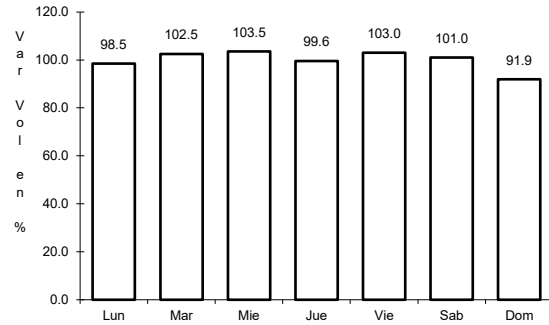


Km: 35.80      Tipo: 1      Sent: 0

38 CARR: Libramiento Poniente de Tampico (Cuota)

CLAVE: 28051

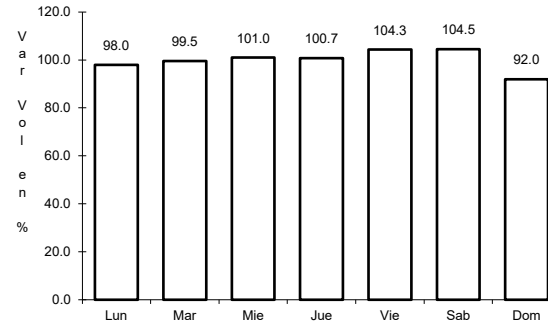
RUTA: MEX-070D



Km: 0.00

Tipo: 3

Sent: 0



Km: 14.20

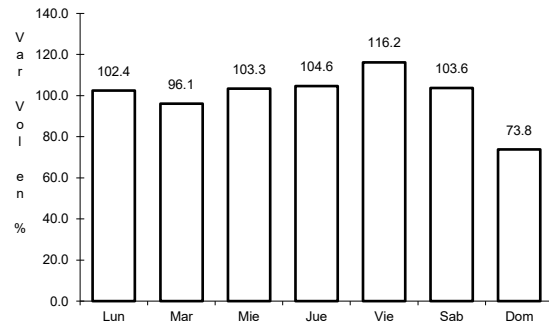
Tipo: 1

Sent: 0

39 CARR: Matamoros - Reynosa (Cuota)

CLAVE: 28079

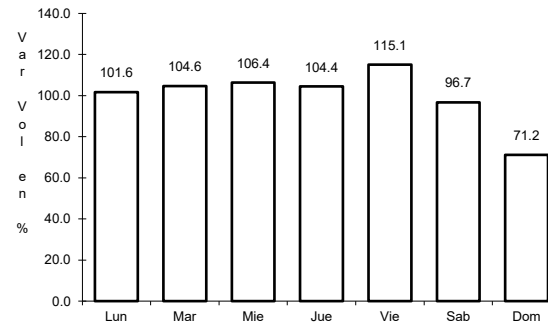
RUTA: MEX-002D



Km: 26.50

Tipo: 3

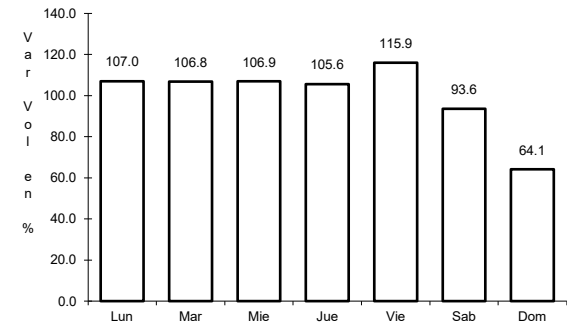
Sent: 1



Km: 26.50

Tipo: 3

Sent: 2



Km: 62.98

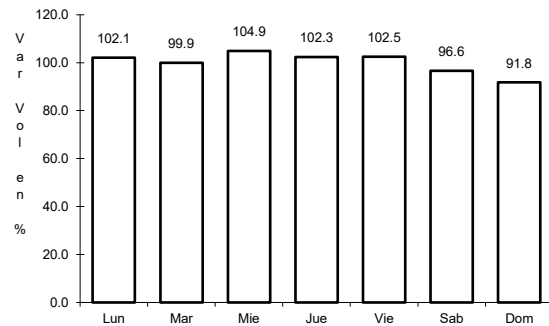
Tipo: 3

Sent: 1

40 CARR: Aldama - Barra El Tordo

CLAVE: 28620

RUTA: TAM



Km: 0.00

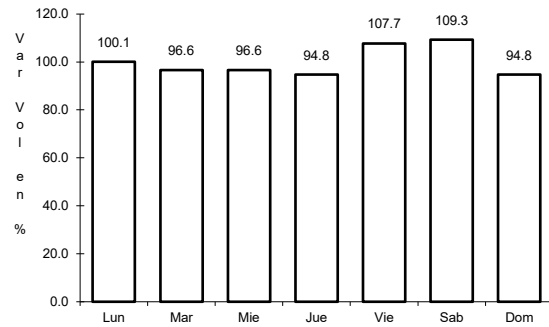
Tipo: 3

Sent: 0

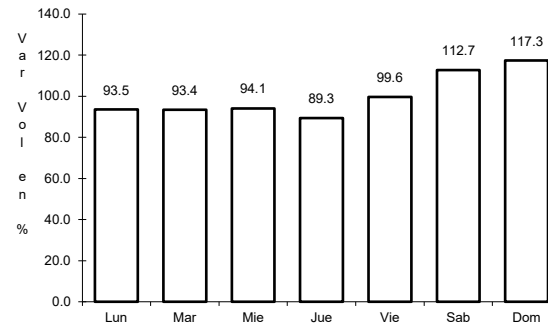
41 CARR: Barretal - Nueva Villa de Padilla

CLAVE: 28001

ruta: TAM-001



Km: 0.00      Tipo: 3      Sent: 0

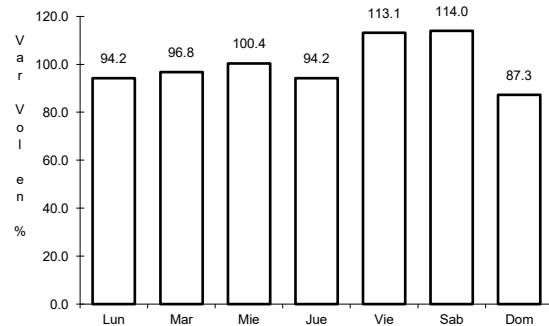


Km: 24.50      Tipo: 1      Sent: 0

42 CARR: China - Méndez

CLAVE: 00191

ruta: NL-TAM

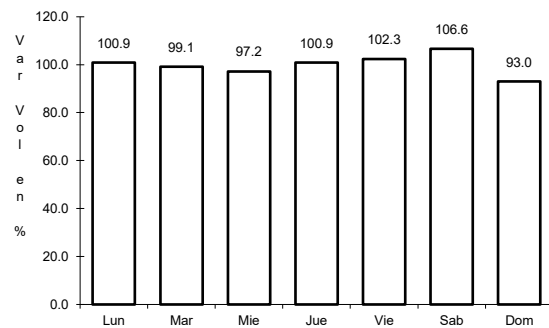


Km: 0.00      Tipo: 3      Sent: 0

43 CARR: Ébano - Estación Manuel

CLAVE: 24624

ruta: SLP-TAM

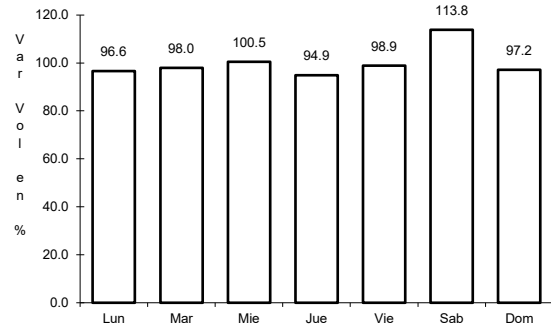


Km: 0.00      Tipo: 3      Sent: 0

44 CARR: El Limón - Ocampo

CLAVE: 28019

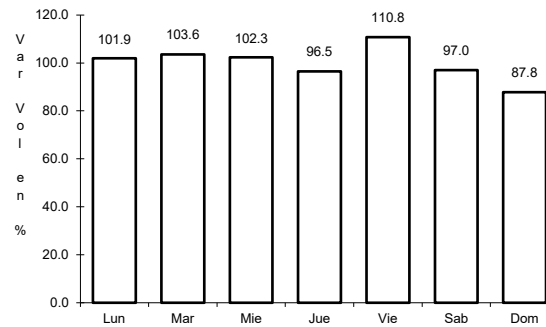
ruta: TAM-019



Km: 0.00

Tipo: 3

Sent: 0



Km: 43.00

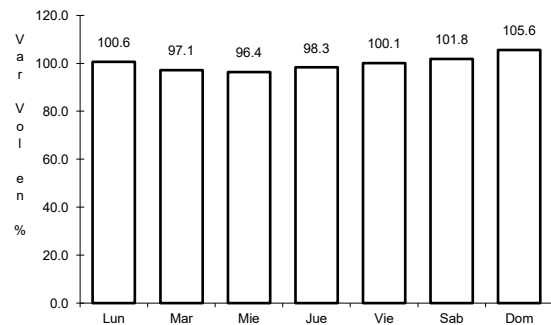
Tipo: 1

Sent: 0

45 CARR: Ent. Huisachito - Nuevo Laredo

CLAVE: 00074

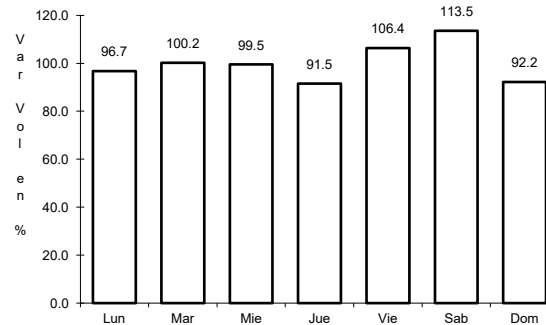
ruta: NL-001-TAM



Km: 0.00

Tipo: 3

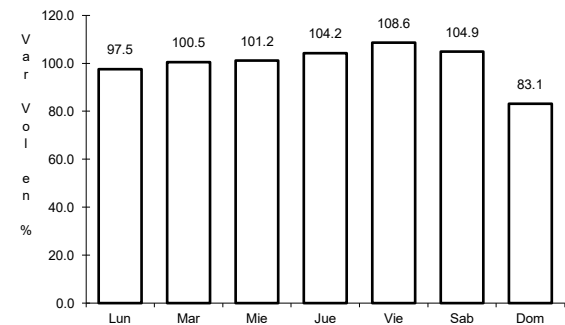
Sent: 0



Km: 47.00

Tipo: 1

Sent: 0



Km: 51.00

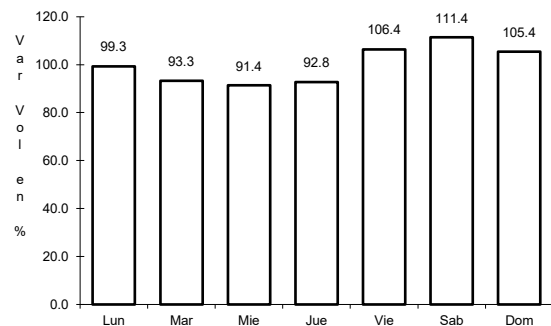
Tipo: 1

Sent: 0

46 CARR: Ent. Las Blancas - Río Bravo

CLAVE: 28003

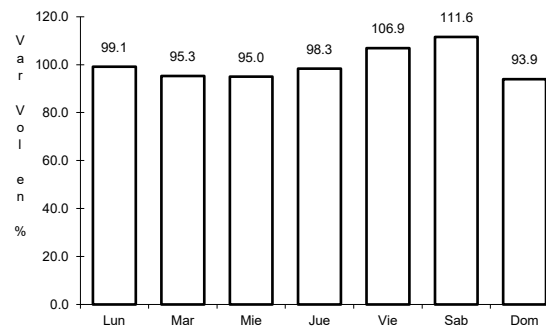
ruta: TAM-003



Km: 0.00

Tipo: 3

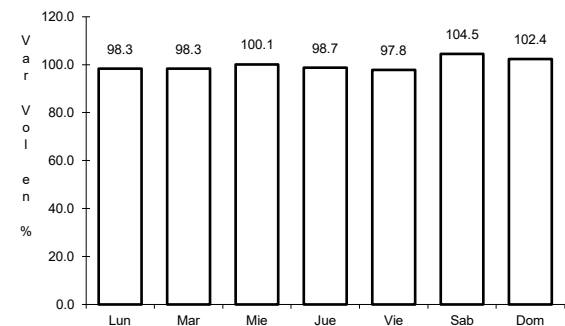
Sent: 0



Km: 21.00

Tipo: 1

Sent: 1



Km: 21.00

Tipo: 1

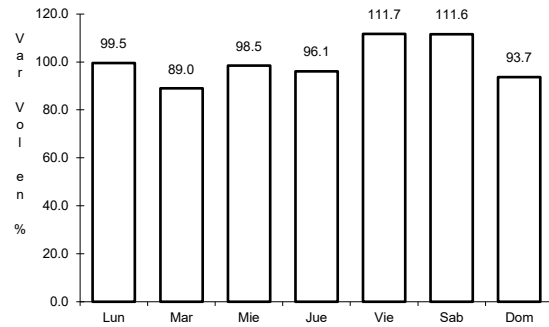
Sent: 2



47 CARR: La Joya - Méndez

CLAVE: 28623

RUTA: TAM



Km: 0.00

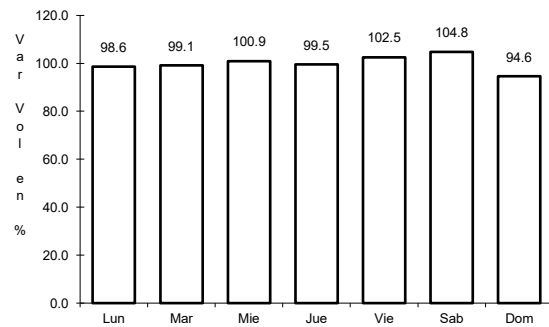
Tipo: 3

Sent: 0

48 CARR: Libramiento de Cd. Victoria

CLAVE: 28282

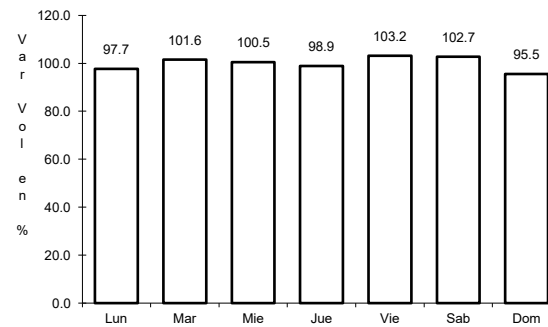
RUTA: TAM



Km: 0.00

Tipo: 3

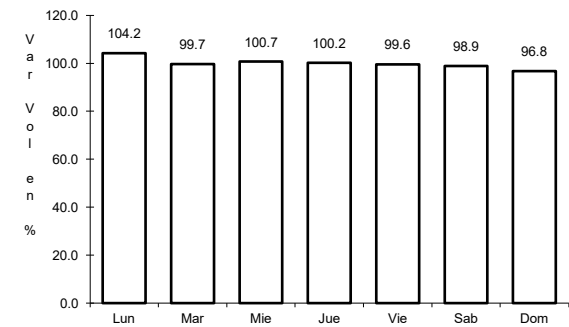
Sent: 1



Km: 0.00

Tipo: 3

Sent: 2



Km: 25.90

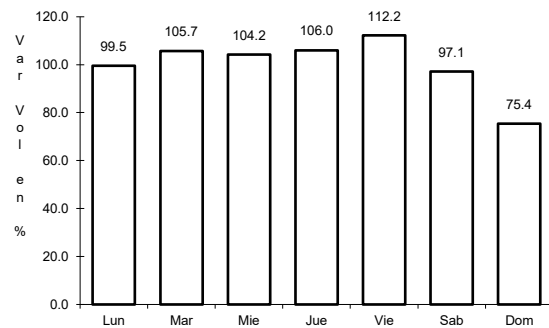
Tipo: 1

Sent: 1

49 CARR: Libramiento de Mier

CLAVE: 28282

RUTA: TAMPS



Km: 0.00

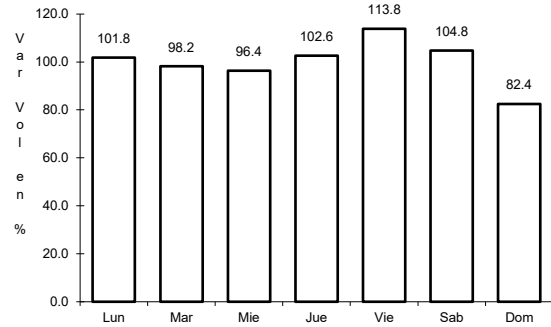
Tipo: 3

Sent: 0

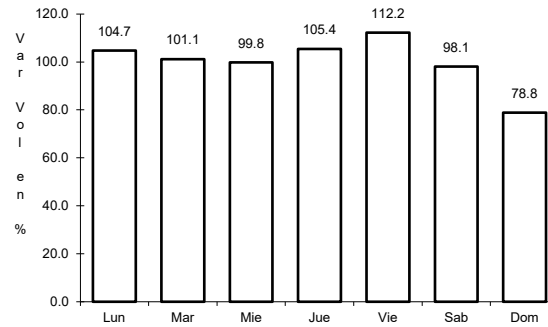
50 CARR: Libramiento de Nuevo Laredo

CLAVE: 28030

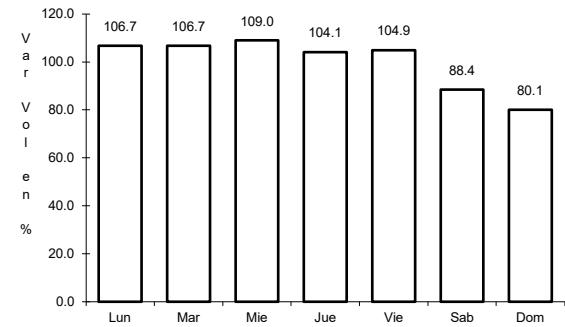
RUTA: TAM



Km: 0.00      Tipo: 3      Sent: 1



Km: 0.00      Tipo: 3      Sent: 2

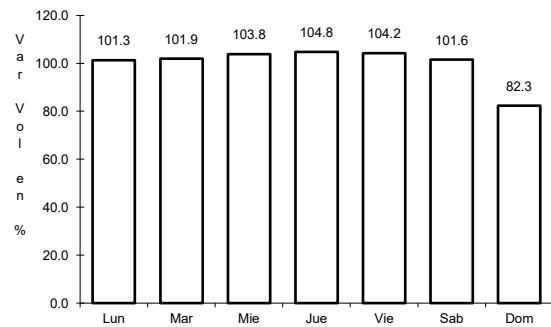


Km: 18.00      Tipo: 1      Sent: 1

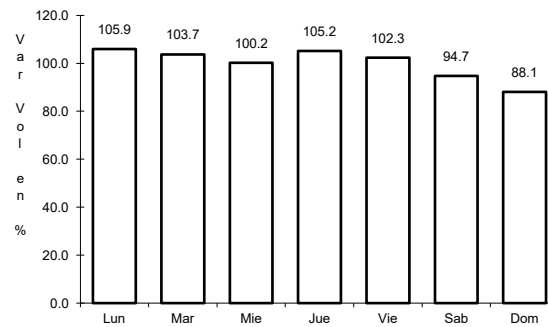
51 CARR: Libramiento de Nuevo Laredo II

CLAVE: 28626

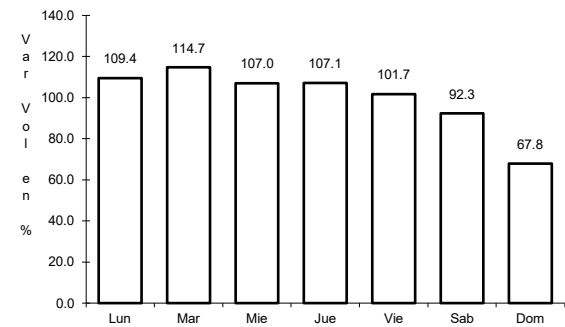
RUTA: TAM



Km: 0.00      Tipo: 3      Sent: 0



Km: 32.20      Tipo: 1      Sent: 1

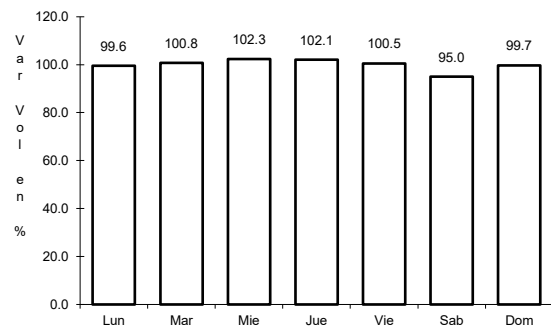


Km: 32.20      Tipo: 1      Sent: 2

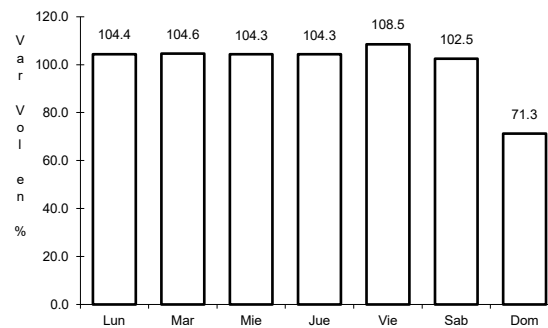
52 CARR: Libramiento de Río Bravo

CLAVE: 28002

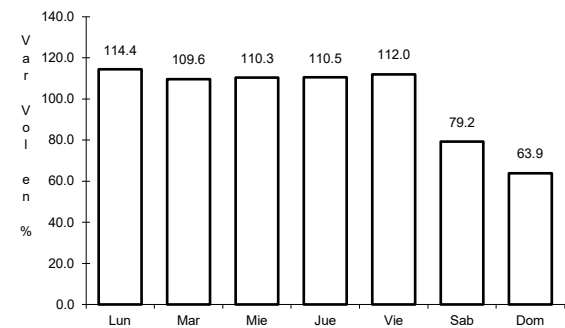
RUTA: TAM



Km: 0.00      Tipo: 3      Sent: 1



Km: 0.00      Tipo: 3      Sent: 2

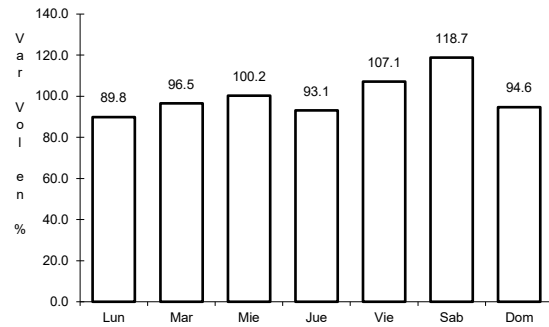


Km: 13.10      Tipo: 1      Sent: 1

53 CARR: Los Guerra - Los Herreras

CLAVE: 19031

RUTA: TAM-NL



Km: 73.00

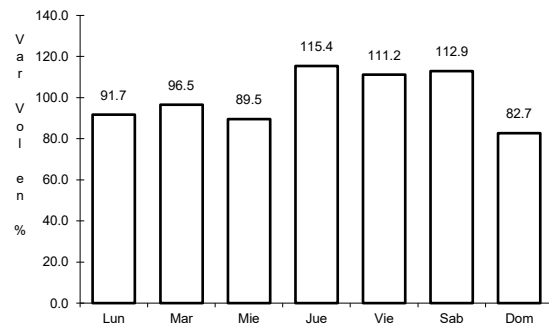
Tipo: 1

Sent: 0

54 CARR: Peña Blanca - Cd. Camargo

CLAVE: 00102

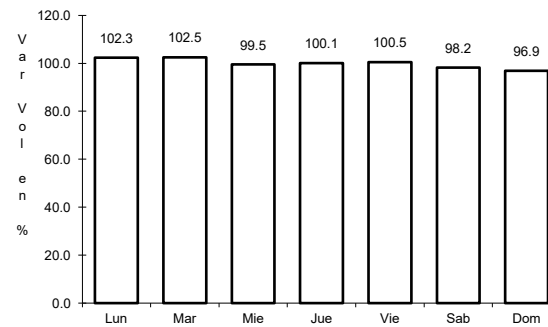
RUTA: NL-TAM



Km: 0.00

Tipo: 3

Sent: 0



Km: 65.00

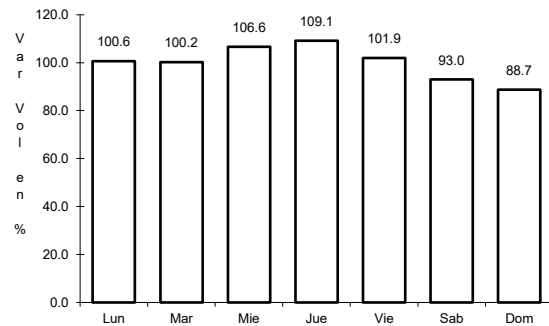
Tipo: 1

Sent: 0

55 CARR: Potrero Nuevo - Rancho El Mezquital

CLAVE: 28615

RUTA: TAM



Km: 0.00

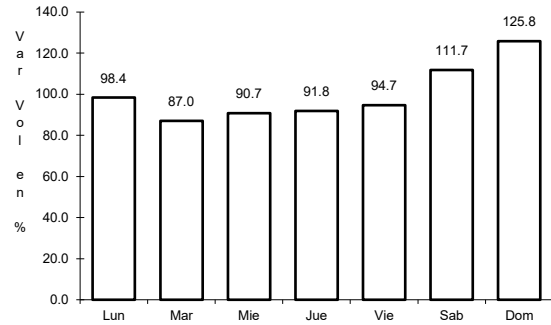
Tipo: 3

Sent: 0

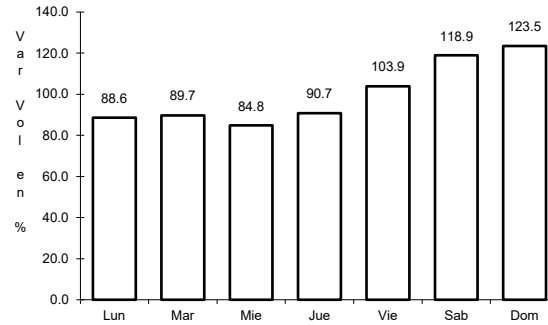
56 CARR: Ramal a Gómez Farías

CLAVE: 28020

ruta: TAM-020



Km: 0.00      Tipo: 3      Sent: 0

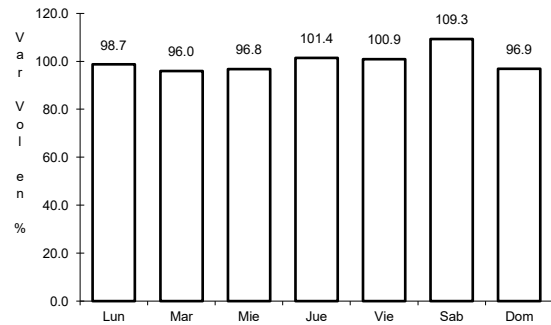


Km: 11.00      Tipo: 1      Sent: 0

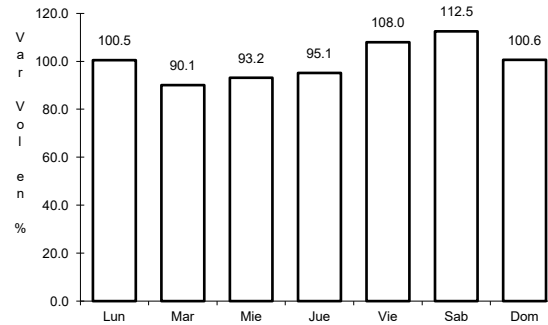
57 CARR: Ramal a Xicotécatl

CLAVE: 28619

ruta: TAM



Km: 0.00      Tipo: 3      Sent: 0

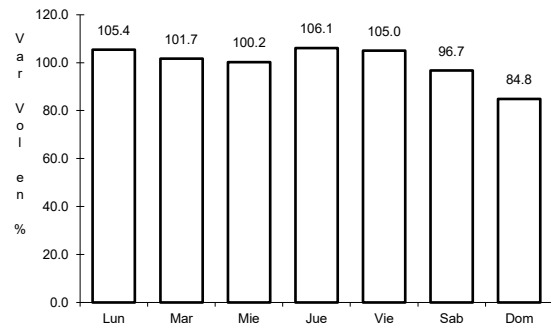


Km: 13.00      Tipo: 1      Sent: 0

58 CARR: San Fernando - Carboneras

CLAVE: 28618

ruta: TAM

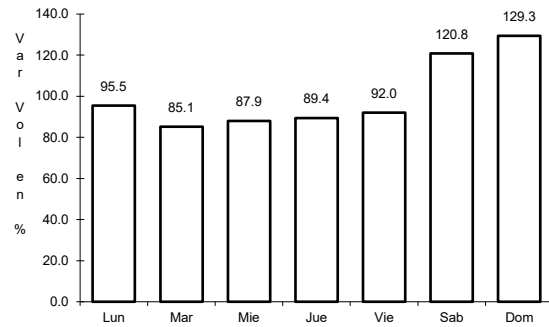


Km: 0.00      Tipo: 3      Sent: 0

59 CARR: Soto La Marina - La Pesca

CLAVE: 28049

ruta: TAM-070



Km: 0.00

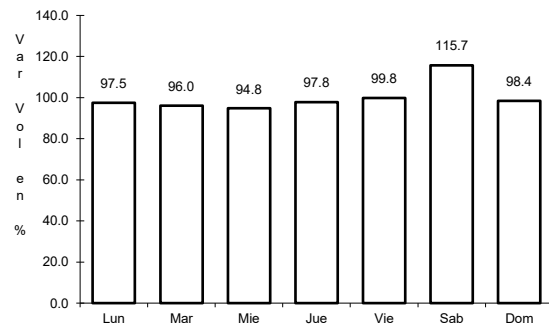
Tipo: 3

Sent: 0

60 CARR: T. C. (Valle Hermoso - Empalme) - Matamoros

CLAVE: 28005

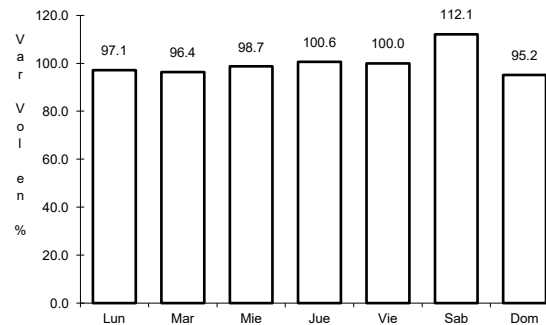
ruta: TAM-005



Km: 0.00

Tipo: 3

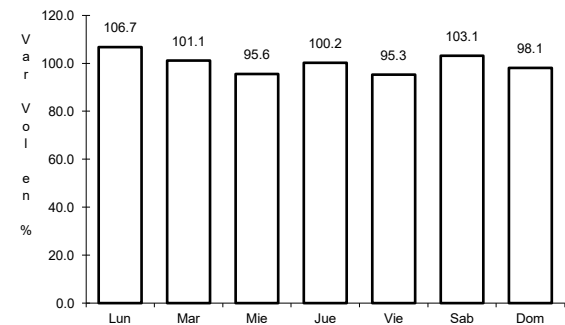
Sent: 0



Km: 33.90

Tipo: 1

Sent: 1



Km: 33.90

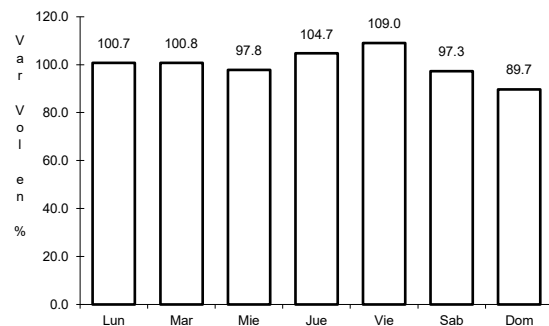
Tipo: 1

Sent: 2

61 CARR: T. C. Libramiento Cd. Victoria - San Antonio

CLAVE:

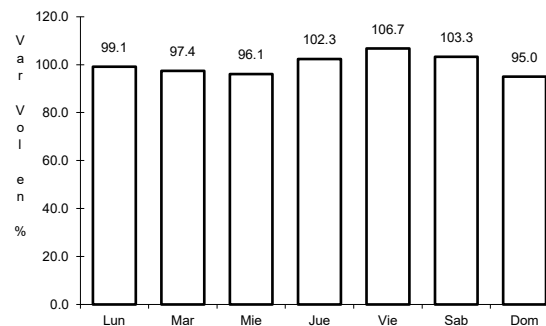
ruta: TAM-126



Km: 0.00

Tipo: 3

Sent: 0



Km: 37.50

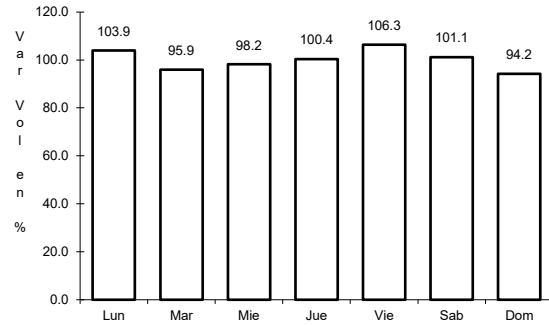
Tipo: 1

Sent: 0

62 CARR: Valle Hermoso - Empalme

CLAVE: 28004

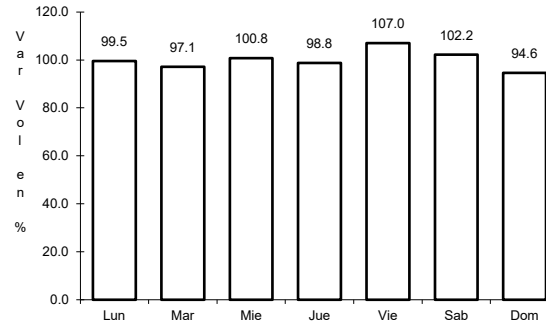
RUTA: TAM-004



Km: 0.00

Tipo: 3

Sent: 0



Km: 28.38

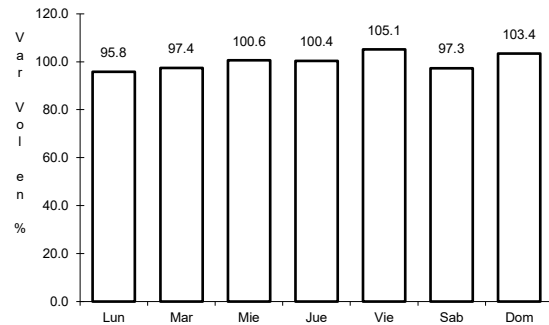
Tipo: 1

Sent: 0

63 CARR: Valle Hermoso - Las Yescas

CLAVE: 28614

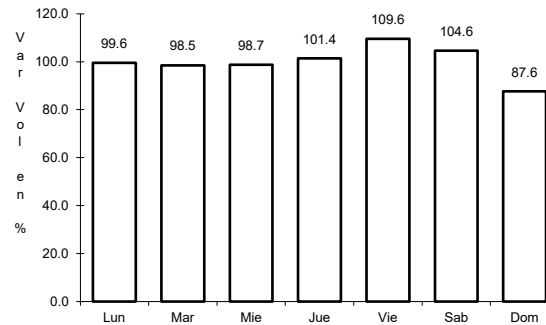
RUTA: TAM



Km: 0.00

Tipo: 3

Sent: 0



Km: 26.00

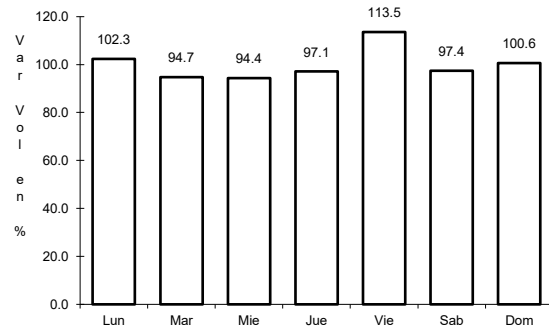
Tipo: 1

Sent: 0

64 CARR: Santander Jiménez - Ent. El Ojito

CLAVE: 28579

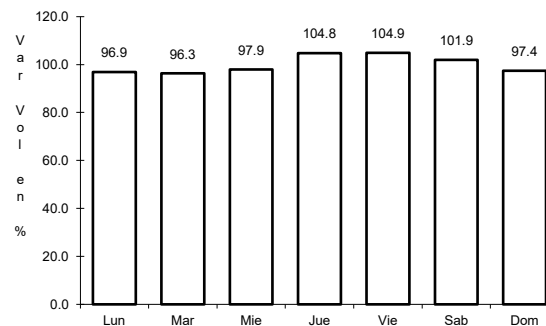
RUTA: MEX-107-TAM



Km: 0.00

Tipo: 3

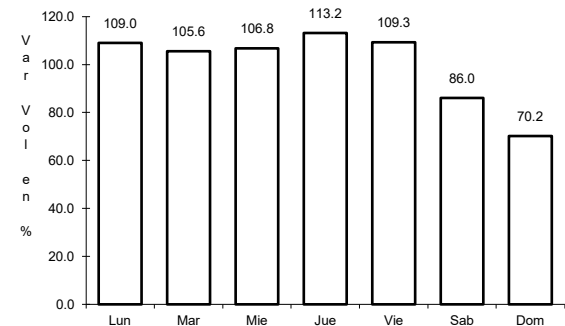
Sent: 0



Km: 20.00

Tipo: 1

Sent: 0



Km: 58.00

Tipo: 1

Sent: 0