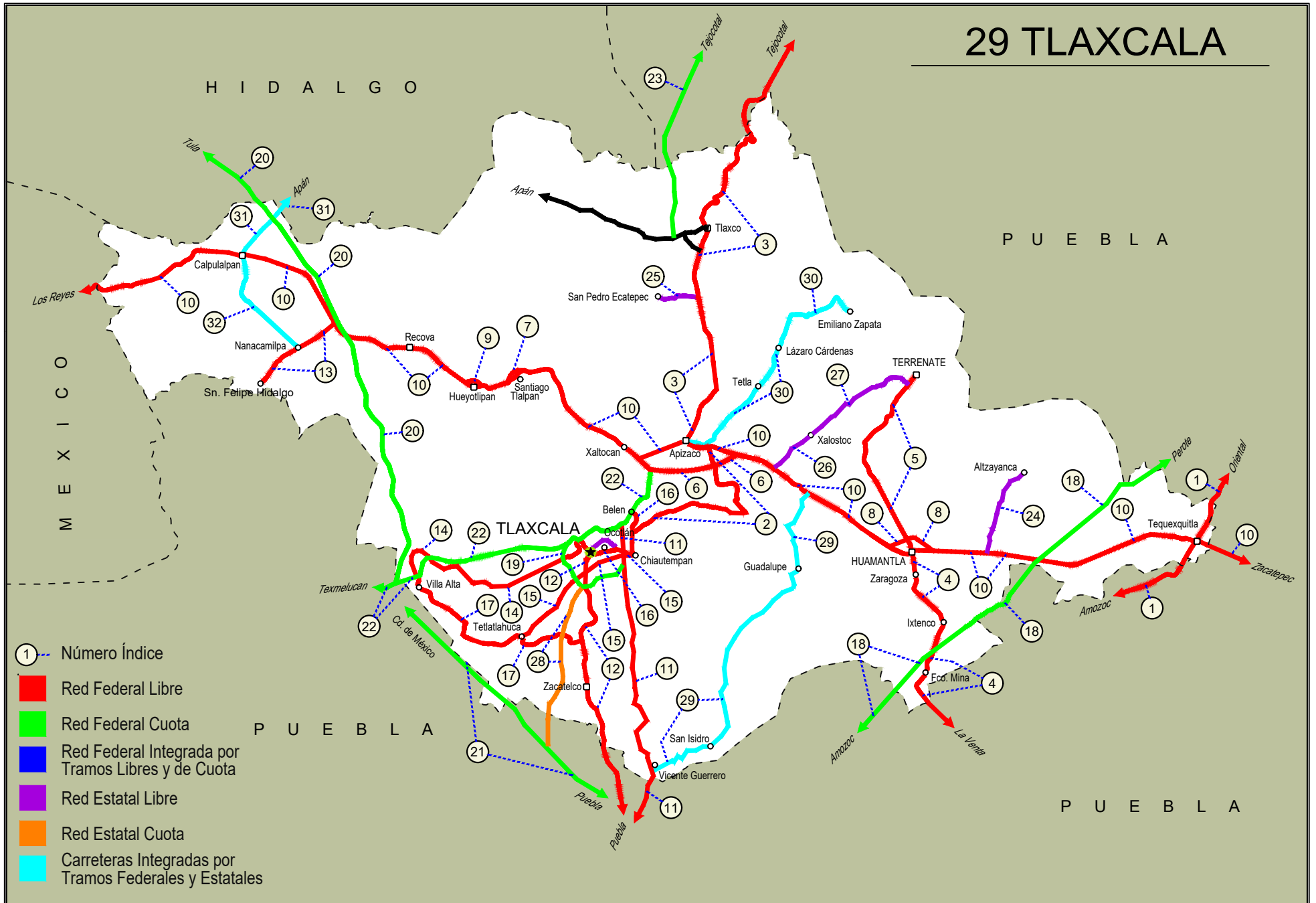




TLAXCALA

NO. INDICE CARRETERA		RUTA
	---RED FEDERAL LIBRE---	
1	Amozoc - Teziutlán	MEX-129
2	Apizaco - San Pablo Apetatitlán	MEX-119
3	Apizaco - Tejocotal	MEX-119
4	Huamantla - La Venta	MEX-136
5	Huamantla - Terrenate	MEX-136
6	Libramiento de Apizaco	MEX-136
7	Libramiento de Santiago Tlalpan	MEX-136
8	Libramiento Huamantla	MEX-136
9	Libramiento Hueyotlipan	MEX-136
10	Los Reyes - Zacatepec	MEX-136
11	Puebla - Belem	MEX-121
12	Puebla - Tlaxcala	MEX-119
13	Ramal a San Felipe de Hidalgo	MEX-136
14	San Martín Texmelucan - Tlaxcala	MEX-117
15	Tetlatlahuca - Santa Ana Chiautempan	MEX-119
16	Tlaxcala - Belem	MEX-119
17	Villa Alta - T. C. (Puebla - Tlaxcala)	MEX-119
	---RED FEDERAL DE CUOTA---	
18	Amozoc - Perote (Cuota)	MEX-140D
19	Libramiento de Tlaxcala (Cuota)	MEX-117D
20	Libramiento Norte de la Ciudad de México (Cuota)	MEX-055D
21	México - Puebla (Cuota)	MEX-150D
22	San Martín Texmelucan - Tlaxcala - El Molinito (Cuota)	MEX-117D
23	Tlaxco - Tejocotal (Cuota)	MEX-119D
	---RED ESTATAL LIBRE---	
24	Ramal a Altzayanca de Hidalgo	TLAX
25	Ramal a San Pedro Ecatepec	TLAX
26	Ramal a Xalostoc	TLAX
27	Xalostoc - Terrenate	TLAX
	---RED ESTATAL DE CUOTA---	
28	Puebla - Tlaxcala (Cuota)	PUE-D
	---CARRETERAS INTEGRADAS POR TRAMOS FEDERALES Y ESTATALES---	
29	Acocotla - Vicente Guerrero	MEX-TLAX
30	Apizaco - Emiliano Zapata	TLAX-MEX-136
31	Calpulalpan - El Ocote	MEX-HGO
32	Calpulalpan - Nanacamilpa	TLAX-MEX-136

29 TLAXCALA



TLAXCALA

1 CARR: Amozoc - Teziutlán

CLAVE: 00210

RUTA: MEX-129

AÑO: 2023

LUGAR	ESTACION				CLASIFICACION VEHICULAR EN PORCIENTO										COORDENADAS					
	KM	TE	SC	TDPA	M	A	B	C2	C3	T3S2	T3S3	T3S2R4	OTROS	A	B	C	K'	D	LATITUD	LONGITUD
Amozoc	0.00																			
X. C. Puebla - Acatzingo (Cuota)	1.40	3	0	12449	2.8	82.5	0.7	7.9	2.1	1.7	1.6	0.4	0.3	85.3	0.7	14.0	0.082	0.507	19.051257	-98.027728
Acajete	12.00	3	1	5103	2.6	74.7	1.4	10.3	2.2	6.3	1.5	0.6	0.4	77.3	1.4	21.3	0.084	0.508	19.120997	-97.940769
Acajete	12.00	3	2	4936	2.5	74.4	1.7	10.3	2.4	6.2	1.5	0.6	0.4	76.9	1.7	21.4	0.094	0.508	19.121025	-97.940790
Rafael Lara Grajales	35.50	1	0	5138	1.6	74.6	2.9	7.6	5.3	4.3	1.9	1.0	0.8	76.2	2.9	20.9	0.081	0.511	19.236314	-97.807545
Rafael Lara Grajales	35.50	3	0	9736	2.2	81.7	2.2	5.1	2.8	4.0	1.4	0.4	0.2	83.9	2.2	13.9	0.087	0.504	19.231588	-97.785619
Lim. Edos. Term. Pue. Ppia. Tlax.	50.54																			
X. C. Los Reyes - Zacatepec	56.31	1	0	5287	2.4	79.2	3.3	7.5	2.4	2.8	1.6	0.7	0.1	81.6	3.3	15.1	0.080	0.509	19.315667	-97.654649
Lim. Edos. Term. Tlax. Ppia. Pue.	60.22																			
Oriental	62.62	1	0	6631	5.4	81.9	1.9	5.1	1.4	3.5	0.4	0.3	0.1	87.3	1.9	10.8	0.090	0.510	19.365614	-97.628750
Oriental	62.62	3	0	7762	4.4	81.0	2.2	5.8	1.2	3.7	0.8	0.5	0.4	85.4	2.2	12.4	0.093	0.515	19.382724	-97.619096
X. C. Amozoc - Perote (Cuota)	69.00	1	1	4754	7.0	81.0	1.8	5.6	1.9	1.1	1.1	0.4	0.1	88.0	1.8	10.2	0.081	0.501	19.411431	-97.635604
X. C. Amozoc - Perote (Cuota)	69.00	1	2	4743	6.7	80.4	1.8	5.9	2.1	1.3	1.3	0.4	0.1	87.1	1.8	11.1	0.086	0.501	19.411207	-97.635565
X. C. Amozoc - Perote (Cuota)	69.00	3	0	10155	3.6	81.1	1.9	6.5	1.5	3.7	0.9	0.3	0.5	84.7	1.9	13.4	0.082	0.505	19.422561	-97.647130
Libres	76.35	3	0	11217	2.4	83.1	1.4	6.1	1.1	3.7	1.0	0.4	0.8	85.5	1.4	13.1	0.077	0.507	19.482095	-97.673936
San Miguel Tenextatiloyán	106.70	1	0	4946	2.6	79.4	2.5	7.6	1.9	3.8	1.2	0.8	0.2	82.0	2.5	15.5	0.088	0.512	19.702382	-97.598913
T. Izq. Zacapoaxtla	114.80	1	0	7590	4.7	84.1	1.5	3.2	0.8	3.6	0.9	0.7	0.5	88.8	1.5	9.7	0.084	0.511	19.759145	-97.568374
T. Izq. Zacapoaxtla	114.80	3	0	10412	2.8	84.1	1.1	5.2	0.8	4.6	0.4	0.4	0.6	86.9	1.1	12.0	0.090	0.508	19.764641	-97.564499
Zaragoza	116.80	3	0	8307	4.0	83.5	1.5	5.4	0.7	3.5	0.7	0.2	0.5	87.5	1.5	11.0	0.072	0.505	19.787146	-97.541435
Teziutlán	157.80	1	0	13626	6.7	73.7	0.7	16.0	0.7	1.6	0.1	0.4	0.1	80.4	0.7	18.9	0.078	0.523	19.817574	-97.379495

2 CARR: Apizaco - San Pablo Apetatitlán

CLAVE: 29035

RUTA: MEX-119

AÑO: 2023

LUGAR	ESTACION				CLASIFICACION VEHICULAR EN PORCIENTO										COORDENADAS					
	KM	TE	SC	TDPA	M	A	B	C2	C3	T3S2	T3S3	T3S2R4	OTROS	A	B	C	K'	D	LATITUD	LONGITUD
T. C. Los Reyes - Zacatepec	0.00	3	0	8225	5.5	91.7	0.4	1.5	0.7	0.2	0.0	0.0	0.0	97.2	0.4	2.4	0.098	0.521	19.410222	-98.118778
T. Der. Tecnológico	0.55	3	0	10904	6.9	90.5	0.3	1.7	0.3	0.2	0.0	0.1	0.0	97.4	0.3	2.3	0.067	0.528	19.405336	-98.117401
Cuaxomulco	9.10	3	0	3111	12.2	83.2	1.0	2.4	0.9	0.1	0.1	0.1	0.0	95.4	1.0	3.6	0.073	0.502	19.355795	-98.105825
Santa Cruz Tlaxcala	14.50	3	0	6385	9.1	85.5	0.8	2.5	0.9	0.4	0.2	0.4	0.2	94.6	0.8	4.6	0.077	0.504	19.353462	-98.157931
T. Izq. Contla	18.90	1	0	10795	10.7	84.2	0.7	2.4	0.8	0.5	0.2	0.4	0.1	94.9	0.7	4.4	0.077	0.513	19.342764	-98.178655
San Pablo Apetatitlán	20.00	1	0	16994	4.5	88.3	0.5	2.7	0.7	0.5	1.3	1.1	0.4	92.8	0.5	6.7	0.074	0.530	19.335855	-98.190145

TLAXCALA

3 CARR: Apizaco - Tejocotal

CLAVE: 00430

RUTA: MEX-119

AÑO: 2023

LUGAR	ESTACION				CLASIFICACION VEHICULAR EN PORCIENTO													COORDENADAS		
	KM	TE	SC	TDPA	M	A	B	C2	C3	T3S2	T3S3	T3S2R4	OTROS	A	B	C	K'	D	LATITUD	LONGITUD
Apizaco	0.00	3	1	11205	4.2	85.2	2.3	4.6	1.1	1.7	0.3	0.5	0.1	89.4	2.3	8.3	0.085	0.519	19.437510	-98.131322
Apizaco	0.00	3	2	10394	4.2	84.9	2.3	4.6	1.1	1.7	0.4	0.6	0.2	89.1	2.3	8.6	0.101	0.519	19.437603	-98.131348
T. Der. Tetla	6.60	3	0	23950	0.7	86.5	1.7	5.3	1.5	2.2	1.2	0.5	0.4	87.2	1.7	11.1	0.078	0.528	19.473336	-98.112506
T. Izq. Atlangatepec	12.15	1	0	16405	1.4	86.3	1.8	4.6	1.6	2.4	1.0	0.6	0.3	87.7	1.8	10.5	0.088	0.503	19.505625	-98.117019
Tlaxco	23.91	1	1	5039	4.0	87.9	1.1	3.6	0.8	1.8	0.6	0.1	0.1	91.9	1.1	7.0	0.094	0.507	19.598670	-98.125476
Tlaxco	23.91	1	2	5180	4.2	87.2	1.3	3.3	0.9	2.0	0.8	0.2	0.1	91.4	1.3	7.3	0.094	0.507	19.598700	-98.125579
Tlaxco	23.91	3	0	6059	3.4	83.6	1.8	5.2	1.6	2.4	1.2	0.4	0.4	87.0	1.8	11.2	0.107	0.504	19.626266	-98.124862
Lim. Edos. Term. Tlax. Ppia. Pue.	34.45																			
T. Der. Tetela de Ocampo	52.20	1	0	8109	6.8	83.7	1.0	5.2	1.1	0.9	1.1	0.1	0.1	90.5	1.0	8.5	0.101	0.515	19.800863	-98.026546
Zacatlán	71.25	1	0	13536	7.3	85.3	1.4	3.5	1.0	0.8	0.3	0.3	0.1	92.6	1.4	6.0	0.098	0.511	19.918601	-97.959281
Lim. Edos. Term. Pue. Ppia. Hgo.	110.45																			
T. C. Pachuca - Tuxpam	113.15	1	0	10381	3.2	81.4	1.9	8.8	1.7	1.2	0.8	0.7	0.3	84.6	1.9	13.5	0.080	0.500	20.123369	-98.128803

4 CARR: Huamantla - La Venta

CLAVE: 29564

RUTA: MEX-136

AÑO: 2023

LUGAR	ESTACION				CLASIFICACION VEHICULAR EN PORCIENTO													COORDENADAS		
	KM	TE	SC	TDPA	M	A	B	C2	C3	T3S2	T3S3	T3S2R4	OTROS	A	B	C	K'	D	LATITUD	LONGITUD
Huamantla	0.00	3	1	5231	5.9	85.3	1.0	5.2	0.8	0.7	0.6	0.4	0.1	91.2	1.0	7.8	0.083	0.501	19.298185	-97.921023
Huamantla	0.00	3	2	5259	5.6	85.4	0.9	5.3	0.8	0.8	0.6	0.5	0.1	91.0	0.9	8.1	0.082	0.501	19.298213	-97.920911
Ignacio Zaragoza	2.30	3	0	6901	3.4	85.2	1.4	5.8	0.6	2.2	0.7	0.2	0.5	88.6	1.4	10.0	0.081	0.519	19.282140	-97.921670
Ixtenco	8.00	1	0	5984	3.4	85.9	1.2	5.9	0.4	2.5	0.3	0.1	0.3	89.3	1.2	9.5	0.080	0.507	19.261516	-97.900203
Ixtenco	8.00	3	0	4483	3.2	87.7	2.4	5.5	0.7	0.3	0.1	0.1	0.0	90.9	2.4	6.7	0.077	0.508	19.242197	-97.896570
X. C. Amozoc - Perote (Cuota)	11.40	1	0	4379	3.4	84.1	2.8	6.7	0.8	1.3	0.4	0.4	0.1	87.5	2.8	9.7	0.106	0.515	19.227204	-97.902317
Zitlaltepec	13.60	1	0	3936	3.8	85.6	1.6	6.4	0.6	1.2	0.5	0.2	0.1	89.4	1.6	9.0	0.083	0.503	19.215824	-97.907526
Zitlaltepec	13.60	3	0	3987	4.2	84.1	1.5	7.0	0.9	1.6	0.6	0.1	0.0	88.3	1.5	10.2	0.068	0.502	19.193527	-97.919026
T. C. Amozoc - Teziutlán	17.60	1	0	3609	3.4	81.7	1.3	8.1	1.5	2.8	1.0	0.2	0.0	85.1	1.3	13.6	0.076	0.517	19.176617	-97.909381

5 CARR: Huamantla - Terrenate

CLAVE: 29036

RUTA: MEX-136

AÑO: 2023

LUGAR	ESTACION				CLASIFICACION VEHICULAR EN PORCIENTO													COORDENADAS		
	KM	TE	SC	TDPA	M	A	B	C2	C3	T3S2	T3S3	T3S2R4	OTROS	A	B	C	K'	D	LATITUD	LONGITUD
Huamantla	0.00	3	0	4683	4.7	79.6	2.8	5.1	1.7	3.2	1.5	1.2	0.2	84.3	2.8	12.9	0.094	0.502	19.336920	-97.934582
T. Izq. Xicoténcatl	12.50	1	0	1153	5.2	88.9	0.2	3.8	1.2	0.2	0.4	0.1	0.0	94.1	0.2	5.7	0.085	0.505	19.413341	-97.968777
Terrenate	21.00	1	0	1471	6.4	88.5	0.4	3.1	1.0	0.2	0.3	0.1	0.0	94.9	0.4	4.7	0.081	0.500	19.463875	-97.929960

TLAXCALA

6 CARR: Libramiento de Apizaco

CLAVE: 29567

RUTA: MEX-136

AÑO: 2023

LUGAR	ESTACION				CLASIFICACION VEHICULAR EN PORCIENTO										COORDENADAS					
	KM	TE	SC	TDPA	M	A	B	C2	C3	T3S2	T3S3	T3S2R4	OTROS	A	B	C	K'	D	LATITUD	LONGITUD
T. C. Los Reyes - Zacatepec	0.00																			
T. C. Los Reyes - Zacatepec	0.00	3	1	13442	8.7	75.3	2.0	3.1	2.5	4.0	2.0	2.1	0.3	84.0	2.0	14.0	0.116	0.533	19.389417	-98.168072
T. C. Los Reyes - Zacatepec	0.00	3	2	15365	8.2	75.5	2.2	3.0	2.4	4.2	2.1	2.0	0.4	83.7	2.2	14.1	0.082	0.533	19.389660	-98.168014
T. Der. Amaxac de Guerrero	6.00	1	1	15071	4.4	75.4	2.3	4.5	2.2	5.9	2.5	1.9	0.9	79.8	2.3	17.9	0.092	0.539	19.377342	-98.156577
T. Der. Amaxac de Guerrero	6.00	1	2	17600	4.3	73.9	2.7	4.9	2.6	6.1	2.5	2.1	0.9	78.2	2.7	19.1	0.071	0.539	19.377486	-98.156520
T. Der. Amaxac de Guerrero	6.00	3	1	11175	3.9	70.3	4.2	3.8	3.5	7.4	3.0	3.1	0.8	74.2	4.2	21.6	0.087	0.532	19.399930	-98.101637
T. Der. Amaxac de Guerrero	6.00	3	2	12711	3.6	70.5	4.2	4.0	3.5	7.4	2.8	3.2	0.8	74.1	4.2	21.7	0.075	0.532	19.400133	-98.101596
T. C. Los Reyes - Zacatepec	10.40																			

7 CARR: Libramiento de Santiago Tlalpan

CLAVE:

RUTA: MEX-136

AÑO: 2023

LUGAR	ESTACION				CLASIFICACION VEHICULAR EN PORCIENTO										COORDENADAS					
	KM	TE	SC	TDPA	M	A	B	C2	C3	T3S2	T3S3	T3S2R4	OTROS	A	B	C	K'	D	LATITUD	LONGITUD
T. C. Los Reyes - Zacatepec Oeste	0.00	3	1	9075	1.7	68.2	3.1	7.2	3.9	10.3	2.8	2.1	0.7	69.9	3.1	27.0	0.087	0.516	19.474980	-98.314723
T. C. Los Reyes - Zacatepec Oeste	0.00	3	2	9674	1.4	68.6	3.3	7.1	3.8	10.2	2.7	2.3	0.6	70.0	3.3	26.7	0.105	0.516	19.474965	-98.314852
T. C. Los Reyes - Zacatepec Este	3.00																			

8 CARR: Libramiento Huamantla

CLAVE: 29567

RUTA: MEX-136

AÑO: 2023

LUGAR	ESTACION				CLASIFICACION VEHICULAR EN PORCIENTO										COORDENADAS					
	KM	TE	SC	TDPA	M	A	B	C2	C3	T3S2	T3S3	T3S2R4	OTROS	A	B	C	K'	D	LATITUD	LONGITUD
T. C. Los Reyes - Zacatepec (Poniente)	0.00	3	1	10589	3.4	73.4	3.9	5.2	2.7	6.5	2.0	2.3	0.6	76.8	3.9	19.3	0.078	0.501	19.325307	-97.931049
T. C. Los Reyes - Zacatepec (Poniente)	0.00	3	2	10636	3.4	73.4	3.9	5.2	2.5	6.5	2.0	2.5	0.6	76.8	3.9	19.3	0.068	0.501	19.325363	-97.931121
T. C. Los Reyes - Zacatepec (Oriente)	4.60	1	1	10020	1.8	70.8	3.2	4.9	4.1	7.8	3.8	2.9	0.7	72.6	3.2	24.2	0.084	0.521	19.322751	-97.914441
T. C. Los Reyes - Zacatepec (Oriente)	4.60	1	2	10920	1.8	70.8	3.2	4.9	4.1	7.8	3.8	2.9	0.7	72.6	3.2	24.2	0.092	0.521	19.322830	-97.914407

9 CARR: Libramiento Hueyotlilpan

CLAVE: 29567

RUTA: MEX-136

AÑO: 2023

LUGAR	ESTACION				CLASIFICACION VEHICULAR EN PORCIENTO										COORDENADAS					
	KM	TE	SC	TDPA	M	A	B	C2	C3	T3S2	T3S3	T3S2R4	OTROS	A	B	C	K'	D	LATITUD	LONGITUD
T. C. Los Reyes - Zacatepec (Poniente)	0.00	3	1	9543	0.8	70.4	3.8	4.6	4.0	10.0	2.6	3.1	0.7	71.2	3.8	25.0	0.065	0.514	19.476191	-98.352900
T. C. Los Reyes - Zacatepec (Poniente)	0.00	3	2	10080	0.9	70.5	3.8	4.5	3.8	10.0	2.6	3.2	0.7	71.4	3.8	24.8	0.089	0.514	19.476267	-98.352903
T. C. Los Reyes - Zacatepec (Oriente)	2.70	1	1	9548	2.5	68.2	3.9	4.6	3.8	9.9	2.8	3.5	0.8	70.7	3.9	25.4	0.074	0.514	19.474381	-98.341525
T. C. Los Reyes - Zacatepec (Oriente)	2.70	1	2	9039	2.5	66.9	3.9	4.6	3.7	11.5	2.9	3.4	0.6	69.4	3.9	26.7	0.074	0.514	19.475189	-98.342845

TLAXCALA

10 CARR: Los Reyes - Zacatepec

CLAVE: 00052

RUTA: MEX-136

AÑO: 2023

LUGAR	ESTACION				CLASIFICACION VEHICULAR EN PORCIENTO										COORDENADAS					
	KM	TE	SC	TDPA	M	A	B	C2	C3	T3S2	T3S3	T3S2R4	OTROS	A	B	C	K'	D	LATITUD	LONGITUD
T. C. México - Puebla (Libre)	0.00																			
T. Izq. La Magdalena	3.35	3	1	45744	7.3	79.2	1.0	8.6	1.1	1.4	0.9	0.2	0.3	86.5	1.0	12.5	0.063	0.508	19.379616	-98.941361
T. Izq. La Magdalena	3.35	3	2	47412	6.2	81.1	0.8	7.0	1.5	1.4	1.3	0.3	0.4	87.3	0.8	11.9	0.056	0.508	19.379932	-98.941416
T. Izq. Chimalhuacán	8.45	1	1	40039	7.7	81.6	0.7	4.4	1.1	2.1	1.6	0.2	0.6	89.3	0.7	10.0	0.062	0.506	19.413058	-98.920156
T. Izq. Chimalhuacán	8.45	1	2	41204	9.0	82.0	0.4	4.5	1.0	1.1	1.5	0.2	0.3	91.0	0.4	8.6	0.067	0.506	19.413180	-98.920300
T. C. San Bernardino - Tepexpan	17.00	1	1	37733	8.1	82.6	0.7	4.0	1.4	1.6	1.1	0.2	0.3	90.7	0.7	8.6	0.076	0.504	19.469931	-98.893473
T. C. San Bernardino - Tepexpan	17.00	1	2	37101	8.7	81.6	0.7	4.4	1.4	1.7	1.0	0.2	0.3	90.3	0.7	9.0	0.069	0.504	19.469959	-98.893608
T. C. San Bernardino - Tepexpan	17.00	3	1	15063	3.8	89.5	0.4	5.3	0.5	0.3	0.2	0.0	0.0	93.3	0.4	6.3	0.072	0.505	19.483884	-98.886435
T. C. San Bernardino - Tepexpan	17.00	3	2	14740	5.0	87.7	0.4	5.8	0.6	0.3	0.2	0.0	0.0	92.7	0.4	6.9	0.068	0.505	19.483986	-98.886558
Texcoco	23.02	3	1	19390	2.9	78.2	2.0	9.9	2.5	3.2	0.6	0.5	0.2	81.1	2.0	16.9	0.071	0.519	19.527138	-98.858059
Texcoco	23.02	3	2	20910	2.9	78.1	2.1	9.9	2.5	3.2	0.6	0.5	0.2	81.0	2.1	16.9	0.069	0.519	19.527230	-98.858110
T. Izq. Tepetlaoxtoc	30.03	1	1	17504	2.6	76.7	2.5	8.2	2.4	4.5	2.1	0.8	0.2	79.3	2.5	18.2	0.071	0.529	19.545803	-98.826113
T. Izq. Tepetlaoxtoc	30.03	1	2	15570	2.6	76.7	2.5	8.1	2.4	4.5	2.1	0.8	0.3	79.3	2.5	18.2	0.083	0.529	19.545891	-98.826155
T. Der. San Jerónimo Amanalco	31.42	3	1	8766	3.9	75.8	3.3	4.3	2.5	7.7	1.4	0.8	0.3	79.7	3.3	17.0	0.086	0.503	19.550302	-98.793434
T. Der. San Jerónimo Amanalco	31.42	3	2	8860	3.9	75.9	3.2	4.3	2.5	7.7	1.4	0.8	0.3	79.8	3.2	17.0	0.074	0.503	19.550414	-98.793382
T. Der. Totolapan	42.00	3	1	7478	3.9	73.8	2.7	5.5	2.7	7.7	2.5	0.9	0.3	77.7	2.7	19.6	0.089	0.500	19.557284	-98.729548
T. Der. Totolapan	42.00	3	2	7484	3.9	73.9	2.7	5.4	2.7	7.7	2.5	0.9	0.3	77.8	2.7	19.5	0.102	0.500	19.557400	-98.729583
Lim. Edos. Term. Méx. Ppia. Tlax.	43.15																			
T. C. Calpulalpan - El Ocote	58.15																			
Calpulalpan	59.58	1	1	8869	3.0	75.5	3.2	7.3	2.3	5.8	1.4	1.1	0.4	78.5	3.2	18.3	0.087	0.541	19.593035	-98.583767
Calpulalpan	59.58	1	2	10454	3.4	76.0	3.4	6.9	2.1	5.6	1.2	0.9	0.5	79.4	3.4	17.2	0.105	0.541	19.593116	-98.583762
Calpulalpan	59.58	3	0	30131	1.7	74.4	3.3	7.6	2.4	6.4	2.8	1.0	0.4	76.1	3.3	20.6	0.075	0.506	19.574232	-98.511061
T. Der. Nanacamilpa	71.76	3	0	20778	1.7	75.0	3.3	7.6	2.1	6.8	2.2	1.0	0.3	76.7	3.3	20.0	0.074	0.542	19.523796	-98.478567
X. C. Arco Norte de La Ciudad de México	73.80	3	1	10422	1.6	70.3	3.8	6.4	2.7	8.8	2.9	2.8	0.7	71.9	3.8	24.3	0.089	0.509	19.513525	-98.453952
X. C. Arco Norte de La Ciudad de México	73.80	3	2	10815	1.9	71.4	3.2	6.0	3.0	8.5	2.7	2.5	0.8	73.3	3.2	23.5	0.107	0.509	19.513609	-98.453954
T. Libramiento Hueyotlipan Oeste	86.84																			
Hueyotlipan	88.21	1	1	10953	1.2	72.4	3.4	6.5	2.6	8.2	2.9	2.0	0.8	73.6	3.4	23.0	0.078	0.517	19.480027	-98.365597
Hueyotlipan	88.21	1	2	11724	1.1	72.1	3.2	6.1	2.7	8.5	2.9	2.7	0.7	73.2	3.2	23.6	0.090	0.517	19.480105	-98.365557
Hueyotlipan	88.21	3	1	10759	1.1	74.3	2.8	6.3	2.7	7.7	2.4	1.9	0.8	75.4	2.8	21.8	0.083	0.528	19.469360	-98.324867
Hueyotlipan	88.21	3	2	12056	1.4	72.1	3.1	6.9	2.7	8.0	2.7	2.3	0.8	73.5	3.1	23.4	0.088	0.528	19.469509	-98.324709
T. Libramiento HueyotlipanEste	89.51																			
T. C. Libramiento de Santiago Tlalpan	93.40	3	1	17460	1.9	71.1	5.0	3.5	2.6	9.9	2.4	2.7	0.9	73.0	5.0	22.0	0.074	0.507	19.483764	-98.295329
T. C. Libramiento de Santiago Tlalpan	93.40	3	2	16956	1.7	70.4	5.1	3.7	2.8	10.2	2.5	2.7	0.9	72.1	5.1	22.8	0.105	0.507	19.483864	-98.295329
Ent. Xipetzinco	94.90	3	1	10865	1.4	71.7	4.0	6.0	2.7	8.9	2.2	2.5	0.6	73.1	4.0	22.9	0.076	0.501	19.484325	-98.281520
Ent. Xipetzinco	94.90	3	2	10916	1.5	72.7	3.9	6.1	2.5	8.2	2.2	2.3	0.6	74.2	3.9	21.9	0.099	0.501	19.484406	-98.281529

TLAXCALA

10 CARR: Los Reyes - Zacatepec

CLAVE: 00052

RUTA: MEX-136

AÑO: 2023

LUGAR	ESTACION				CLASIFICACION VEHICULAR EN PORCIENTO										COORDENADAS					
	KM	TE	SC	TDPA	M	A	B	C2	C3	T3S2	T3S3	T3S2R4	OTROS	A	B	C	K'	D	LATITUD	LONGITUD
Xaltocan	108.10	1	1	11061	1.2	74.4	3.1	6.4	2.3	8.0	2.1	1.8	0.7	75.6	3.1	21.3	0.080	0.506	19.423778	-98.215719
Xaltocan	108.10	1	2	11347	1.3	74.0	2.9	6.6	2.5	7.8	2.4	1.7	0.8	75.3	2.9	21.8	0.108	0.506	19.423862	-98.215704
T. C. Libramiento de Apizaco Oeste	111.30	1	1	17302	1.8	81.2	5.0	1.6	3.3	3.4	1.5	1.7	0.5	83.0	5.0	12.0	0.072	0.542	19.396634	-98.181483
T. C. Libramiento de Apizaco Oeste	111.30	1	2	14629	1.7	82.5	4.9	1.8	3.3	3.2	0.6	1.6	0.4	84.2	4.9	10.9	0.079	0.542	19.396697	-98.181425
Apizaco	117.74	1	1	24129	1.9	85.6	1.2	7.1	0.9	1.5	1.0	0.3	0.5	87.5	1.2	11.3	0.089	0.510	19.405533	-98.170883
Apizaco	117.74	1	2	25143	2.1	86.2	1.0	6.9	0.8	1.4	0.9	0.2	0.5	88.3	1.0	10.7	0.080	0.510	19.404299	-98.171613
Apizaco	117.74	3	0	16580	1.9	88.8	1.1	6.3	0.6	0.6	0.3	0.2	0.2	90.7	1.1	8.2	0.072	0.506	19.412368	-98.132581
T. Der. Cuaxomulco	119.85	3	1	18734	2.3	90.5	0.4	5.4	0.5	0.4	0.3	0.1	0.1	92.8	0.4	6.8	0.077	0.501	19.413187	-98.115179
T. Der. Cuaxomulco	119.85	3	2	18817	2.2	90.0	0.5	5.9	0.7	0.3	0.2	0.1	0.1	92.2	0.5	7.3	0.077	0.501	19.413303	-98.115332
T. Libramiento de Apizaco Este	122.70	3	1	18795	2.2	80.5	2.1	6.9	1.5	3.6	1.3	1.5	0.4	82.7	2.1	15.2	0.079	0.511	19.405218	-98.089258
T. Libramiento de Apizaco Este	122.70	3	2	19628	1.8	81.3	1.9	6.4	1.4	3.7	1.6	1.4	0.5	83.1	1.9	15.0	0.075	0.511	19.405533	-98.090266
T. Izq. Xalostoc	126.67	3	1	16677	2.3	77.0	2.7	6.8	2.0	5.0	1.9	1.8	0.5	79.3	2.7	18.0	0.077	0.517	19.389582	-98.052523
T. Izq. Xalostoc	126.67	3	2	15573	2.2	76.4	3.0	7.0	2.2	5.2	1.9	1.6	0.5	78.6	3.0	18.4	0.072	0.517	19.389466	-98.052202
T. Izq. Libramiento de Huamantla	141.70	1	1	14638	1.9	78.1	3.7	4.7	2.1	5.8	1.5	1.8	0.4	80.0	3.7	16.3	0.086	0.501	19.325203	-97.953245
T. Izq. Libramiento de Huamantla	141.70	1	2	14559	1.8	78.2	3.9	4.7	2.0	5.8	1.5	1.7	0.4	80.0	3.9	16.1	0.097	0.501	19.325273	-97.953205
Huamantla	143.02	3	1	11598	4.1	73.9	4.6	4.6	2.1	6.4	2.1	1.7	0.5	78.0	4.6	17.4	0.075	0.527	19.315285	-97.884829
Huamantla	143.02	3	2	10430	4.5	73.9	4.3	4.6	1.9	6.4	2.3	1.7	0.4	78.4	4.3	17.3	0.084	0.527	19.315367	-97.884812
T. Libramiento de Huamantla Este	144.42																			
X. C. Amozoc - Perote (Cuota)	156.76	1	1	10140	2.8	67.0	4.8	6.2	3.1	8.6	4.2	2.6	0.7	69.8	4.8	25.4	0.073	0.506	19.308399	-97.810505
X. C. Amozoc - Perote (Cuota)	156.76	1	2	9894	2.4	67.0	4.8	6.2	3.1	8.6	4.2	2.9	0.8	69.4	4.8	25.8	0.077	0.506	19.308476	-97.810489
X. C. Amozoc - Perote (Cuota)	156.76	3	0	16730	3.9	71.1	4.5	5.0	3.8	6.4	1.8	2.8	0.7	75.0	4.5	20.5	0.077	0.527	19.305375	-97.791775
T. Der. Cuapixtla	159.40	1	0	11200	2.7	71.7	3.6	7.2	3.0	6.3	3.4	1.8	0.3	74.4	3.6	22.0	0.084	0.520	19.303667	-97.781269
X. C. Amozoc - Teziutlán	173.47	1	0	7138	2.8	69.4	3.9	4.8	4.0	8.0	4.9	1.7	0.5	72.2	3.9	23.9	0.085	0.517	19.327832	-97.672900
X. C. Amozoc - Teziutlán	173.47	3	0	4814	2.6	57.9	3.4	3.7	7.8	11.9	9.1	2.7	0.9	60.5	3.4	36.1	0.080	0.517	19.313466	-97.627835
Lim. Edos. Term. Tlax. Ppia. Pue. Zacatepec	177.57																			
Zacatepec	187.67	1	0	5442	2.9	58.4	3.8	5.6	7.1	11.3	7.7	2.4	0.8	61.3	3.8	34.9	0.084	0.504	19.271467	-97.543789

11 CARR: Puebla - Belem

CLAVE: 00055

RUTA: MEX-121

AÑO: 2023

LUGAR	ESTACION				CLASIFICACION VEHICULAR EN PORCIENTO										COORDENADAS					
	KM	TE	SC	TDPA	M	A	B	C2	C3	T3S2	T3S3	T3S2R4	OTROS	A	B	C	K'	D	LATITUD	LONGITUD
T. C. Puebla - Tlaxcala	0.00																			
X. C. Puebla - Acatzingo (Cuota)	4.00	3	1	28688	2.6	89.8	1.1	4.3	0.8	0.9	0.2	0.2	0.1	92.4	1.1	6.5	0.069	0.502	19.102093	-98.182555
X. C. Puebla - Acatzingo (Cuota)	4.00	3	2	30693	2.5	89.4	1.2	4.2	1.0	1.1	0.3	0.2	0.1	91.9	1.2	6.9	0.070	0.502	19.102080	-98.182683
Lim. Edos. Term. Pue. Ppia. Tlax.	6.60																			

TLAXCALA

11 CARR: Puebla - Belem

CLAVE: 00055

RUTA: MEX-121

AÑO: 2023

LUGAR	ESTACION				CLASIFICACION VEHICULAR EN PORCIENTO													COORDENADAS		
	KM	TE	SC	TDPA	M	A	B	C2	C3	T3S2	T3S3	T3S2R4	OTROS	A	B	C	K'	D	LATITUD	LONGITUD
Lim. Edos. Term. Tlax. Ppia. Pue.	9.77																			
Lim. Edos. Term. Pue. Ppia. Tlax.	10.25																			
T. Izq. Zacatelco	16.70	1	1	15792	2.9	87.0	1.6	4.7	1.0	1.7	0.6	0.4	0.1	89.9	1.6	8.5	0.082	0.502	19.204520	-98.195436
T. Izq. Zacatelco	16.70	1	2	15647	3.0	86.9	1.5	4.6	1.1	1.9	0.5	0.4	0.1	89.9	1.5	8.6	0.082	0.502	19.204637	-98.195607
X. C. Tlaxcala - Belem	28.80	1	1	20082	8.4	84.0	1.2	2.5	1.0	1.4	0.4	0.4	0.7	92.4	1.2	6.4	0.068	0.523	19.316698	-98.203674
X. C. Tlaxcala - Belem	28.80	1	2	22062	8.5	83.9	1.1	2.6	1.1	1.3	0.4	0.4	0.7	92.4	1.1	6.5	0.068	0.523	19.316731	-98.203751
T. C. San Martín Texmelucan - Ocotoxco (Cuota)	34.90																			

12 CARR: Puebla - Tlaxcala

CLAVE: 00475

RUTA: MEX-119

AÑO: 2023

LUGAR	ESTACION				CLASIFICACION VEHICULAR EN PORCIENTO													COORDENADAS		
	KM	TE	SC	TDPA	M	A	B	C2	C3	T3S2	T3S3	T3S2R4	OTROS	A	B	C	K'	D	LATITUD	LONGITUD
Puebla	0.00																			
X. C. Puebla - Acatzingo (Cuota) Central	5.41	3	1	12179	6.2	85.2	0.8	3.9	1.1	1.2	0.4	0.8	0.4	91.4	0.8	7.8	0.062	0.502	19.096906	-98.207155
X. C. Puebla - Acatzingo (Cuota) Lateral	5.41	3	1	3345	6.2	87.1	0.6	4.1	0.7	0.6	0.4	0.2	0.1	93.3	0.6	6.1	0.075	0.530	19.097053	-98.207083
X. C. Puebla - Acatzingo (Cuota) Lateral	5.41	3	2	3772	6.0	87.4	0.6	3.9	0.6	0.8	0.4	0.2	0.1	93.4	0.6	6.0	0.107	0.530	19.097011	-98.207309
X. C. Puebla - Acatzingo (Cuota) Central	5.41	3	2	10720	6.5	84.1	0.9	4.1	1.3	1.4	0.5	0.8	0.4	90.6	0.9	8.5	0.075	0.502	19.096941	-98.207229
Lim. Edos. Term. Pue. Ppia. Tlax.	11.83																			
Panzacola	13.14	3	1	12524	5.4	87.4	1.3	3.3	1.0	0.9	0.2	0.3	0.2	92.8	1.3	5.9	0.073	0.518	19.152103	-98.223581
Panzacola	13.14	3	2	13455	5.5	86.8	1.3	3.5	1.1	0.9	0.3	0.4	0.2	92.3	1.3	6.4	0.073	0.518	19.152188	-98.223692
San Toribio Xicohtzinco	16.10	3	1	11663	4.1	89.2	0.5	5.1	0.5	0.3	0.1	0.2	0.0	93.3	0.5	6.2	0.076	0.513	19.186889	-98.237793
San Toribio Xicohtzinco	16.10	3	2	11079	4.3	88.9	0.6	5.0	0.4	0.3	0.2	0.2	0.1	93.2	0.6	6.2	0.071	0.513	19.186803	-98.237872
Zacatelco	20.78	1	1	10371	4.2	88.8	0.6	5.5	0.4	0.2	0.1	0.2	0.0	93.0	0.6	6.4	0.076	0.510	19.207961	-98.240602
Zacatelco	20.78	1	2	9967	4.4	88.8	0.4	5.3	0.5	0.3	0.1	0.2	0.0	93.2	0.4	6.4	0.071	0.510	19.208066	-98.240699
T. Izq. San Martín Texmelucan	22.99	1	1	13431	5.9	89.2	0.7	2.9	0.6	0.2	0.3	0.2	0.0	95.1	0.7	4.2	0.085	0.524	19.233720	-98.242966
T. Izq. San Martín Texmelucan	22.99	1	2	12215	5.8	89.1	0.7	2.8	0.5	0.6	0.2	0.2	0.1	94.9	0.7	4.4	0.086	0.524	19.233702	-98.243078
T. Der. Tepeyanco (2º Acceso)	24.97	3	1	11236	3.5	93.6	0.2	2.1	0.3	0.2	0.0	0.1	0.0	97.1	0.2	2.7	0.085	0.504	19.249960	-98.235275
T. Der. Tepeyanco (2º Acceso)	24.97	3	2	11040	3.6	93.4	0.4	2.1	0.2	0.2	0.0	0.1	0.0	97.0	0.4	2.6	0.085	0.504	19.250066	-98.235149
T. Der. Ocotlán (Baja)	32.45	1	1	4983	1.1	93.8	0.7	3.0	0.2	0.6	0.5	0.0	0.1	94.9	0.7	4.4	0.076	0.538	19.302926	-98.240989
T. Der. Ocotlán (Alta)	32.45	1	1	9442	3.6	93.2	0.3	1.2	0.8	0.5	0.3	0.0	0.1	96.8	0.3	2.9	0.076	0.511	19.302974	-98.241075
T. Der. Ocotlán (Baja)	32.45	1	2	4279	1.2	93.6	0.9	2.9	0.2	0.6	0.5	0.0	0.1	94.8	0.9	4.3	0.073	0.538	19.303019	-98.241275
T. Der. Ocotlán (Alta)	32.45	1	2	9049	3.6	93.0	0.3	1.2	0.8	0.5	0.4	0.0	0.2	96.6	0.3	3.1	0.073	0.511	19.303000	-98.241170
Tlaxcala	33.22	1	1	9924	4.9	90.7	0.6	1.9	0.4	0.5	0.3	0.6	0.1	95.6	0.6	3.8	0.072	0.515	19.308870	-98.240670
Tlaxcala	33.22	1	2	9336	4.9	90.7	0.5	1.9	0.4	0.5	0.3	0.7	0.1	95.6	0.5	3.9	0.073	0.515	19.308759	-98.240681

TLAXCALA

13 CARR: Ramal a San Felipe de Hidalgo

CLAVE: 29565

RUTA: MEX-136

AÑO: 2023

LUGAR	ESTACION				CLASIFICACION VEHICULAR EN PORCIENTO										COORDENADAS					
	KM	TE	SC	TDPA	M	A	B	C2	C3	T3S2	T3S3	T3S2R4	OTROS	A	B	C	K'	D	LATITUD	LONGITUD
T. C. Los Reyes - Zacatepec	0.00	3	0	3659	3.0	91.5	0.9	3.4	0.8	0.2	0.1	0.1	0.0	94.5	0.9	4.6	0.084	0.517	19.524654	-98.485411
San Felipe de Hidalgo	10.50	1	0	1823	12.7	84.7	0.6	1.3	0.6	0.1	0.0	0.0	0.0	97.4	0.6	2.0	0.103	0.512	19.474939	-98.552171

14 CARR: San Martín Texmelucan - Tlaxcala

CLAVE: 00158

RUTA: MEX-117

AÑO: 2023

LUGAR	ESTACION				CLASIFICACION VEHICULAR EN PORCIENTO										COORDENADAS					
	KM	TE	SC	TDPA	M	A	B	C2	C3	T3S2	T3S3	T3S2R4	OTROS	A	B	C	K'	D	LATITUD	LONGITUD
San Martín Texmelucan	0.00	3	1	10545	7.1	83.0	0.6	4.4	0.4	1.4	1.8	0.8	0.5	90.1	0.6	9.3	0.076	0.541	19.287863	-98.423114
San Martín Texmelucan	0.00	3	2	8960	7.4	83.0	0.6	4.4	0.4	1.4	1.6	0.7	0.5	90.4	0.6	9.0	0.076	0.541	19.287952	-98.423141
X. C. San Martín Texmelucan - Ocotoxco (Cuota)	1.65	3	0	23639	7.6	83.4	0.8	5.5	0.9	0.7	0.6	0.2	0.3	91.0	0.8	8.2	0.082	0.526	19.291501	-98.411949
Lim. Edos. Term. Pue. Ppia. Tlax.	2.84																			
T. Der. Tepetitla	3.45	3	1	7385	11.9	82.6	0.7	2.1	0.7	0.8	0.3	0.6	0.3	94.5	0.7	4.8	0.079	0.513	19.294023	-98.403907
T. Der. Tepetitla	3.45	3	2	7004	11.9	82.8	0.6	2.1	0.7	0.8	0.3	0.5	0.3	94.7	0.6	4.7	0.070	0.513	19.294087	-98.403928
San Diego Xocoyucan	7.21	3	0	8376	7.1	87.9	0.6	2.7	0.5	0.7	0.3	0.2	0.0	95.0	0.6	4.4	0.078	0.514	19.307851	-98.370189
T. Der. Panotla	19.72	1	0	9050	7.3	89.1	0.4	2.4	0.4	0.2	0.1	0.1	0.0	96.4	0.4	3.2	0.080	0.535	19.319560	-98.277056
T. Der. Panotla	19.72	3	0	9134	6.2	89.5	0.7	2.2	0.4	0.6	0.3	0.1	0.0	95.7	0.7	3.6	0.075	0.509	19.319496	-98.270093
Totolac	21.38	1	0	10051	4.4	92.9	0.6	1.3	0.3	0.3	0.1	0.1	0.0	97.3	0.6	2.1	0.076	0.540	19.322591	-98.260360
Totolac	21.38	3	0	14216	6.8	88.0	0.5	2.1	0.1	0.7	0.4	0.9	0.5	94.8	0.5	4.7	0.071	0.522	19.329811	-98.250221
Tlaxcala	24.81	1	0	15051	5.4	90.1	0.3	1.2	0.5	0.7	0.6	0.8	0.4	95.5	0.3	4.2	0.070	0.504	19.325855	-98.246945

15 CARR: Tetlatlahuca - Santa Ana Chiautempan

CLAVE: 00158

RUTA: MEX-119

AÑO: 2023

LUGAR	ESTACION				CLASIFICACION VEHICULAR EN PORCIENTO										COORDENADAS					
	KM	TE	SC	TDPA	M	A	B	C2	C3	T3S2	T3S3	T3S2R4	OTROS	A	B	C	K'	D	LATITUD	LONGITUD
Tetlatlahuca	0.00																			
San Bartolomé Tenango	2.39	1	0	4937	10.6	84.8	0.3	1.9	1.0	0.5	0.2	0.6	0.1	95.4	0.3	4.3	0.091	0.508	19.247457	-98.296563
San Damián Texoloc	5.50	1	0	5036	8.5	87.8	0.3	1.5	0.8	0.3	0.1	0.6	0.1	96.3	0.3	3.4	0.083	0.507	19.272543	-98.284713
San Damián Texoloc	5.50	3	0	7718	4.6	87.5	0.5	3.4	0.6	2.7	0.5	0.1	0.1	92.1	0.5	7.4	0.079	0.506	19.279985	-98.272256
T. Izq. Cuauhtelulpan	9.63	1	0	11928	2.9	93.6	0.5	1.4	0.5	0.4	0.3	0.3	0.1	96.5	0.5	3.0	0.078	0.502	19.288575	-98.251369
T. Izq. Cuauhtelulpan	9.63	3	0	20348	3.5	93.3	0.4	1.1	0.6	0.3	0.2	0.4	0.2	96.8	0.4	2.8	0.086	0.526	19.292235	-98.249539
T. Der. Puebla	9.94	1	0	13266	3.0	93.0	0.5	1.5	0.6	0.3	0.3	0.5	0.3	96.0	0.5	3.5	0.081	0.508	19.300725	-98.245640
T. C. Tlaxcala - Belem	16.00	1	1	12199	4.5	91.1	0.3	1.5	0.9	0.5	0.7	0.3	0.2	95.6	0.3	4.1	0.070	0.510	19.317682	-98.214715
T. C. Tlaxcala - Belem	16.00	1	2	12688	4.4	91.0	0.3	1.5	1.0	0.5	0.8	0.3	0.2	95.4	0.3	4.3	0.074	0.510	19.317747	-98.214709

TLAXCALA

16 CARR: Tlaxcala - Belem

CLAVE: 29389

RUTA: MEX-119

AÑO: 2023

LUGAR	ESTACION				CLASIFICACION VEHICULAR EN PORCIENTO										COORDENADAS					
	KM	TE	SC	TDPA	M	A	B	C2	C3	T3S2	T3S3	T3S2R4	OTROS	A	B	C	K'	D	LATITUD	LONGITUD
Tlaxcala	0.00																			
T. Der. Ocotlán	3.91	1	1	12517	4.7	90.8	0.4	1.9	0.6	0.5	0.6	0.3	0.2	95.5	0.4	4.1	0.073	0.524	19.325344	-98.215519
T. Der. Ocotlán	3.91	1	2	11359	4.8	90.3	0.4	2.1	0.6	0.6	0.7	0.3	0.2	95.1	0.4	4.5	0.071	0.524	19.325380	-98.215368
X. C. Puebla - Belem	4.55	1	1	23909	4.4	90.6	0.5	2.2	0.5	0.7	0.3	0.5	0.3	95.0	0.5	4.5	0.078	0.524	19.319285	-98.206430
X. C. Puebla - Belem	4.55	1	2	21756	4.3	90.6	0.6	2.1	0.6	0.6	0.4	0.5	0.3	94.9	0.6	4.5	0.074	0.524	19.319226	-98.206066
Santa Ana Chiautempan	5.82	1	1	11917	6.1	89.8	0.2	1.7	0.4	0.7	0.5	0.4	0.2	95.9	0.2	3.9	0.075	0.503	19.316676	-98.201871
Santa Ana Chiautempan	5.82	1	2	11789	6.2	89.4	0.3	1.8	0.4	0.8	0.5	0.4	0.2	95.6	0.3	4.1	0.085	0.503	19.316764	-98.201822
T. Der. Ixcotla	7.19	3	1	9961	3.7	93.5	0.3	1.4	0.2	0.4	0.3	0.1	0.1	97.2	0.3	2.5	0.077	0.516	19.326990	-98.193949
T. Der. Ixcotla	7.19	3	2	10629	3.8	93.4	0.2	1.6	0.2	0.3	0.3	0.1	0.1	97.2	0.2	2.6	0.075	0.516	19.326901	-98.194099
Belem	10.06	1	0	6406	4.9	91.2	0.4	2.0	0.6	0.3	0.4	0.1	0.1	96.1	0.4	3.5	0.083	0.529	19.337612	-98.193308

17 CARR: Villa Alta - T. C. (Puebla - Tlaxcala)

CLAVE: 29566

RUTA: MEX-119

AÑO: 2023

LUGAR	ESTACION				CLASIFICACION VEHICULAR EN PORCIENTO										COORDENADAS					
	KM	TE	SC	TDPA	M	A	B	C2	C3	T3S2	T3S3	T3S2R4	OTROS	A	B	C	K'	D	LATITUD	LONGITUD
T. C. San Martín Texmelucan - Tlaxcala	0.00	3	0	9379	18.5	75.0	0.3	4.5	0.3	0.3	0.9	0.1	0.1	93.5	0.3	6.2	0.080	0.505	19.284407	-98.401392
Nativitas	10.50	3	0	10008	5.9	85.3	0.4	6.5	0.5	0.4	0.4	0.4	0.2	91.2	0.4	8.4	0.078	0.504	19.238751	-98.307776
T. C. Puebla - Tlaxcala	22.05	1	0	8723	5.5	84.6	0.5	7.0	0.5	0.5	0.3	0.4	0.7	90.1	0.5	9.4	0.079	0.510	19.234630	-98.244988

18 CARR: Amozoc - Perote (Cuota)

CLAVE: 00030

RUTA: MEX-140D

AÑO: 2023

LUGAR	ESTACION				CLASIFICACION VEHICULAR EN PORCIENTO										COORDENADAS					
	KM	TE	SC	TDPA	M	A	B	C2	C3	T3S2	T3S3	T3S2R4	OTROS	A	B	C	K'	D	LATITUD	LONGITUD
T. C. Puebla - Acatzingo (Cuota)	0.00	3	0	12640	2.4	67.2	8.2	8.6	1.8	6.9	1.4	2.6	0.9	69.6	8.2	22.2	0.075	0.508	19.071508	-98.063126
Plaza de Cobro Amozoc	0.68	2	0	11483	0.6	74.7	5.2	4.4	3.6	7.4	0.8	2.5	0.8	75.3	5.2	19.5	0.085	0.500	19.063641	-98.069094
Lim. Edos. Term. Pue. Ppia. Tlax.	20.08																			
X. C. Huamantla - La Venta	25.80	3	0	10434	2.9	73.8	6.4	4.4	2.7	6.1	0.7	2.4	0.6	76.7	6.4	16.9	0.091	0.515	19.228245	-97.896939
Lim. Edos. Term. Tlax. Ppia. Pue.	30.50																			
Lim. Edos. Term. Pue. Ppia. Tlax.	31.26																			
Lim. Edos. Term. Tlax. Ppia. Pue.	31.67																			
Lim. Edos. Term. Pue. Ppia. Tlax.	38.93																			
Plaza de Cobro Cuapiaxtla	40.34	2	0	6693	0.6	77.3	3.6	4.0	3.7	6.0	0.7	3.1	1.0	77.9	3.6	18.5	0.085	0.500	19.310369	-97.797544
Lim. Edos. Term. Tlax. Ppia. Pue.	54.50																			
T. Der. Oriental	61.45	1	0	15044	2.7	71.8	6.7	4.8	1.9	6.2	1.4	3.7	0.8	74.5	6.7	18.8	0.107	0.505	19.411249	-97.651618
T. Der. Oriental	61.45	3	1	6283	2.3	68.2	8.8	5.3	2.4	7.2	2.0	2.9	0.9	70.5	8.8	20.7	0.077	0.511	19.421007	-97.637129

TLAXCALA

18 CARR: Amozoc - Perote (Cuota)

CLAVE: 00030

RUTA: MEX-140D

AÑO: 2023

LUGAR	ESTACION				CLASIFICACION VEHICULAR EN PORCIENTO										COORDENADAS					
	KM	TE	SC	TDPA	M	A	B	C2	C3	T3S2	T3S3	T3S2R4	OTROS	A	B	C	K'	D	LATITUD	LONGITUD
T. Der. Oriental	61.45	3	2	6568	2.3	69.4	8.3	5.0	2.6	7.1	1.9	2.8	0.6	71.7	8.3	20.0	0.125	0.511	19.421034	-97.637180
T. Izq. Teziutlán	62.70	3	0	9063	2.7	61.3	8.3	5.5	3.2	10.0	2.3	5.8	0.9	64.0	8.3	27.7	0.092	0.526	19.426500	-97.629949
X. C. Tepeyahualco - Cantoná	80.10	3	0	11402	2.6	63.3	8.8	5.2	2.0	9.3	2.1	5.8	0.9	65.9	8.8	25.3	0.083	0.528	19.508117	-97.493164
Lim. Edos. Term. Pue. Ppia. Ver.	90.36																			
T. C. Lib. de Perote	105.00																			

19 CARR: Libramiento de Tlaxcala (Cuota)

CLAVE:

RUTA: MEX-117D

AÑO: 2023

LUGAR	ESTACION				CLASIFICACION VEHICULAR EN PORCIENTO										COORDENADAS					
	KM	TE	SC	TDPA	M	A	B	C2	C3	T3S2	T3S3	T3S2R4	OTROS	A	B	C	K'	D	LATITUD	LONGITUD
T. C. San Martín Texmelucan - Ocotoxco (Cuota)	0.00	3	1	15626	3.0	91.4	0.9	2.1	0.6	1.0	0.4	0.5	0.1	94.4	0.9	4.7	0.081	0.524	19.317262	-98.256432
T. C. San Martín Texmelucan - Ocotoxco (Cuota)	0.00	3	2	14204	3.2	90.4	0.9	2.5	0.8	1.2	0.4	0.5	0.1	93.6	0.9	5.5	0.081	0.524	19.317134	-98.256422
X. C. Puebla - Tlaxcala	6.50	1	1	13732	2.3	91.8	1.0	2.2	0.8	0.9	0.4	0.4	0.2	94.1	1.0	4.9	0.084	0.521	19.296273	-98.253757
X. C. Puebla - Tlaxcala	6.50	1	2	12623	2.5	91.4	1.0	2.3	0.8	1.0	0.4	0.4	0.2	93.9	1.0	5.1	0.086	0.521	19.296045	-98.253510
X. C. Puebla - Tlaxcala	6.50	3	1	16860	2.0	92.8	0.4	2.6	0.5	0.9	0.5	0.2	0.1	94.8	0.4	4.8	0.084	0.506	19.287583	-98.234017
X. C. Puebla - Tlaxcala	6.50	3	2	16449	2.0	93.0	0.4	2.5	0.4	0.9	0.5	0.2	0.1	95.0	0.4	4.6	0.085	0.506	19.287625	-98.234094
T. C. Puebla - Belén Atzitzimitlán	11.00	1	1	15784	3.0	91.8	0.7	1.7	0.7	1.0	0.5	0.4	0.2	94.8	0.7	4.5	0.087	0.523	19.302518	-98.201880
T. C. Puebla - Belén Atzitzimitlán	11.00	1	2	14371	3.0	91.7	0.8	1.6	0.8	0.9	0.6	0.4	0.2	94.7	0.8	4.5	0.088	0.523	19.302606	-98.201919

20 CARR: Libramiento Norte de la Ciudad de México (Cuota)

CLAVE: 0902

RUTA: MEX-055D

AÑO: 2023

LUGAR	ESTACION				CLASIFICACION VEHICULAR EN PORCIENTO										COORDENADAS					
	KM	TE	SC	TDPA	M	A	B	C2	C3	T3S2	T3S3	T3S2R4	OTROS	A	B	C	K'	D	LATITUD	LONGITUD
T. C. Toluca - Palmillas	0.00																			
X. C. Toluca - Palmillas	12.90	1	1	5677	2.6	60.2	6.0	5.4	3.5	14.8	1.9	4.7	0.9	62.8	6.0	31.2	0.077	0.519	19.917558	-99.850479
X. C. Toluca - Palmillas	12.90	1	2	6133	2.8	59.8	6.1	5.8	3.3	14.4	2.4	4.5	0.9	62.6	6.1	31.3	0.061	0.519	19.917572	-99.850680
X. C. Toluca - Palmillas	12.90	3	1	5607	2.3	58.0	7.8	5.2	4.1	14.1	2.2	5.6	0.7	60.3	7.8	31.9	0.071	0.508	19.923116	-99.836527
X. C. Toluca - Palmillas	12.90	3	2	5433	2.5	57.6	8.0	4.8	3.5	15.5	2.0	5.2	0.9	60.1	8.0	31.9	0.088	0.508	19.922898	-99.836434
C. P. Jilotepec	48.70	1	1	5483	3.6	55.5	9.1	5.2	3.0	14.7	2.0	6.1	0.8	59.1	9.1	31.8	0.068	0.502	19.968926	-99.538351
C. P. Jilotepec	48.70	1	2	5450	3.2	56.0	8.8	5.6	3.0	14.6	1.6	6.3	0.9	59.2	8.8	32.0	0.090	0.502	19.968972	-99.538055
C. P. Jilotepec	48.70	3	1	6900	3.7	56.8	7.8	6.1	2.6	15.3	1.7	5.1	0.9	60.5	7.8	31.7	0.075	0.504	19.980261	-99.515966
C. P. Jilotepec	48.70	3	2	7014	3.3	56.6	7.8	5.9	3.4	14.8	2.3	5.0	0.9	59.9	7.8	32.3	0.070	0.504	19.980369	-99.516033
X. C. México - Querétaro	54.00	3	1	9739	2.5	53.2	8.0	5.6	4.3	15.8	3.0	6.8	0.8	55.7	8.0	36.3	0.077	0.538	20.003079	-99.483509
X. C. México - Querétaro	54.00	3	2	8348	2.8	55.1	7.8	4.9	3.9	15.2	4.0	5.6	0.7	57.9	7.8	34.3	0.096	0.538	20.003142	-99.483566
Plaza de Cobro Querétaro	55.00	3	1	9691	0.4	52.8	2.0	4.5	6.0	19.0	4.5	8.2	2.6	53.2	2.0	44.8	0.067	0.500	19.998714	-99.487788

TLAXCALA

20 CARR: Libramiento Norte de la Ciudad de México (Cuota)

CLAVE: 0902

RUTA: MEX-055D

AÑO: 2023

LUGAR	ESTACION				CLASIFICACION VEHICULAR EN PORCIENTO										COORDENADAS					
	KM	TE	SC	TDPA	M	A	B	C2	C3	T3S2	T3S3	T3S2R4	OTROS	A	B	C	K'	D	LATITUD	LONGITUD
Plaza de Cobro Querétaro	55.00	3	2	9691	0.4	52.8	2.0	4.5	6.0	19.0	4.5	8.2	2.6	53.2	2.0	44.8	0.067	0.500	19.998714	-99.487788
Lim. Edos. Term. Méx. Ppia. Hgo.	60.72																			
X. C. Ent. Tepeji del Río - Tlahuelilpan	79.00	1	1	9481	5.0	53.1	6.1	5.0	4.8	14.2	4.4	6.7	0.7	58.1	6.1	35.8	0.067	0.524	20.097363	-99.290651
X. C. Ent. Tepeji del Río - Tlahuelilpan	79.00	1	2	10456	5.3	53.7	5.5	4.7	4.6	15.1	3.9	6.5	0.7	59.0	5.5	35.5	0.065	0.524	20.097435	-99.290690
X. C. Ent. Tepeji del Río - Tlahuelilpan	79.00	3	1	10976	7.8	56.1	4.7	4.5	3.4	13.4	3.6	5.7	0.8	63.9	4.7	31.4	0.078	0.511	20.093753	-99.270576
X. C. Ent. Tepeji del Río - Tlahuelilpan	79.00	3	2	11486	7.0	57.7	3.7	4.7	3.9	13.4	3.6	5.2	0.8	64.7	3.7	31.6	0.074	0.511	20.094033	-99.270720
X. C. Los Reyes - El Tephé	86.40	1	1	11278	3.1	59.0	5.1	4.5	2.8	14.6	4.0	6.1	0.8	62.1	5.1	32.8	0.071	0.501	20.070173	-99.228120
X. C. Los Reyes - El Tephé	86.40	1	2	11225	2.6	58.2	5.2	4.5	3.3	14.9	4.3	6.3	0.7	60.8	5.2	34.0	0.070	0.501	20.070156	-99.227776
X. C. Los Reyes - El Tephé	86.40	3	1	11997	3.3	57.7	5.2	4.0	3.6	16.0	3.4	6.0	0.8	61.0	5.2	33.8	0.077	0.530	20.064823	-99.213920
X. C. Los Reyes - El Tephé	86.40	3	2	10629	3.2	57.7	5.1	4.3	3.1	15.9	3.5	6.4	0.8	60.9	5.1	34.0	0.064	0.530	20.064968	-99.213872
Lim. Edos. Term. Hgo. Ppia. Méx.	95.75																			
X. C. (Los Reyes - El Tephé) - Tianguistongo	108.60	1	1	11147	2.1	53.1	7.1	4.4	3.0	18.6	3.7	7.1	0.9	55.2	7.1	37.7	0.073	0.500	19.958443	-99.067742
X. C. (Los Reyes - El Tephé) - Tianguistongo	108.60	1	2	11145	2.2	54.2	7.0	4.3	3.1	18.4	3.4	6.5	0.9	56.4	7.0	36.6	0.073	0.500	19.958560	-99.067522
X. C. (Los Reyes - El Tephé) - Tianguistongo	108.60	3	1	11789	3.4	57.6	5.8	5.2	2.3	15.6	3.7	5.5	0.9	61.0	5.8	33.2	0.067	0.503	19.955087	-99.050098
X. C. (Los Reyes - El Tephé) - Tianguistongo	108.60	3	2	11928	3.7	55.9	5.4	5.5	3.0	16.3	3.0	6.3	0.9	59.6	5.4	35.0	0.070	0.503	19.955253	-99.050054
Lim. Edos. Term. Méx. Ppia. Hgo.	115.89																			
X. C. México - Pachuca	127.30	1	1	11591	2.8	60.6	4.8	4.1	3.2	15.3	3.4	5.1	0.7	63.4	4.8	31.8	0.079	0.510	19.932306	-98.902517
X. C. México - Pachuca	127.30	1	2	11134	2.6	57.1	5.7	4.7	3.5	16.8	3.2	5.7	0.7	59.7	5.7	34.6	0.072	0.510	19.932489	-98.902637
X. C. México - Pachuca	127.30	3	1	9212	3.7	52.7	5.7	4.2	3.6	18.5	4.1	6.7	0.8	56.4	5.7	37.9	0.082	0.508	19.926723	-98.878921
X. C. México - Pachuca	127.30	3	2	8927	3.7	56.5	5.8	4.1	3.5	16.5	3.5	5.6	0.8	60.2	5.8	34.0	0.076	0.508	19.926819	-98.878663
Lim. Edos. Term. Hgo. Ppia. Méx.	143.98																			
X. C. Venta de Carpio - T. C. (Pachuca - Tulancingo)	151.11	1	1	9224	4.4	51.9	5.8	4.8	3.8	18.0	3.9	6.7	0.7	56.3	5.8	37.9	0.076	0.526	19.840828	-98.709076
X. C. Venta de Carpio - T. C. (Pachuca - Tulancingo)	151.11	1	2	8310	4.4	51.8	5.8	4.8	3.8	18.0	3.9	6.7	0.8	56.2	5.8	38.0	0.084	0.526	19.839842	-98.707735
X. C. Venta de Carpio - T. C. (Pachuca - Tulancingo)	151.11	3	1	8489	3.3	49.7	5.5	4.9	4.8	20.5	3.9	6.5	0.9	53.0	5.5	41.5	0.074	0.503	19.826974	-98.691977
X. C. Venta de Carpio - T. C. (Pachuca - Tulancingo)	151.11	3	2	8597	3.2	51.8	6.5	4.6	4.1	18.7	3.8	6.4	0.9	55.0	6.5	38.5	0.072	0.503	19.828396	-98.693462
X. C. Ent. Tolman - Cd. Sahagún	162.55	1	1	8746	3.6	48.4	8.4	4.8	3.2	20.7	3.9	6.1	0.9	52.0	8.4	39.6	0.077	0.502	19.761578	-98.632495
X. C. Ent. Tolman - Cd. Sahagún	162.55	1	2	8802	3.6	48.5	8.4	4.7	3.2	20.6	3.9	6.2	0.9	52.1	8.4	39.5	0.083	0.502	19.770293	-98.637676
X. C. Ent. Tolman - Cd. Sahagún	162.55	3	1	9639	1.4	53.7	6.3	7.3	2.9	17.3	3.4	6.8	0.9	55.1	6.3	38.6	0.088	0.501	19.746627	-98.624309
X. C. Ent. Tolman - Cd. Sahagún	162.55	3	2	9683	1.7	49.5	7.0	7.6	3.4	19.0	3.9	7.0	0.9	51.2	7.0	41.8	0.093	0.501	19.746742	-98.624176
Lim. Edos. Term. Méx. Ppia. Hgo.	166.53																			
X. C. Calpulallpan - El Ocote	180.39	1	1	11887	7.6	50.1	6.9	5.0	3.7	16.9	3.6	5.3	0.9	57.7	6.9	35.4	0.068	0.519	19.642020	-98.565440
X. C. Calpulallpan - El Ocote	180.39	1	2	11014	7.4	50.6	6.4	5.0	3.4	17.0	4.0	5.3	0.9	58.0	6.4	35.6	0.063	0.519	19.642050	-98.565251
X. C. Calpulallpan - El Ocote	180.39	3	1	11491	3.3	48.0	6.3	4.9	4.3	19.1	4.9	8.3	0.9	51.3	6.3	42.4	0.089	0.526	19.605782	-98.536386
X. C. Calpulallpan - El Ocote	180.39	3	2	12751	3.3	48.8	6.2	4.1	4.5	19.1	4.9	8.2	0.9	52.1	6.2	41.7	0.079	0.526	19.605800	-98.536172
Lim. Edos. Term. Hgo. Ppia. Tlax.	180.98																			

TLAXCALA

20 CARR: Libramiento Norte de la Ciudad de México (Cuota)

CLAVE: 0902

RUTA: MEX-055D

AÑO: 2023

LUGAR	ESTACION				CLASIFICACION VEHICULAR EN PORCIENTO										COORDENADAS					
	KM	TE	SC	TDPA	M	A	B	C2	C3	T3S2	T3S3	T3S2R4	OTROS	A	B	C	K'	D	LATITUD	LONGITUD
X. C. Los Reyes - Zacatepec	196.70	1	1	11414	6.0	50.3	5.9	4.2	2.8	18.3	4.4	7.2	0.9	56.3	5.9	37.8	0.064	0.519	19.520125	-98.472859
X. C. Los Reyes - Zacatepec	196.70	1	2	12298	6.0	50.4	5.9	4.2	2.8	18.3	4.4	7.2	0.8	56.4	5.9	37.7	0.063	0.519	19.520141	-98.472723
X. C. Los Reyes - Zacatepec	196.70	3	1	7989	5.8	52.6	6.3	4.9	2.8	17.9	3.5	5.3	0.9	58.4	6.3	35.3	0.067	0.500	19.508537	-98.467153
X. C. Los Reyes - Zacatepec	196.70	3	2	7982	5.9	52.5	6.3	4.9	2.8	17.9	3.5	5.3	0.9	58.4	6.3	35.3	0.072	0.500	19.508553	-98.467068
X. C. San Martín Texmelucan - Tlaxcala - El Molinito	220.95	1	1	10409	4.2	53.0	6.5	5.1	2.8	18.1	3.6	5.8	0.9	57.2	6.5	36.3	0.061	0.531	19.315339	-98.407358
X. C. San Martín Texmelucan - Tlaxcala - El Molinito	220.95	1	2	9206	4.1	53.1	6.4	4.9	2.8	18.1	3.6	6.0	1.0	57.2	6.4	36.4	0.061	0.531	19.314741	-98.407357
X. C. San Martín Texmelucan - Tlaxcala - El Molinito	220.95	3	1	12225	3.9	64.0	6.4	4.9	2.5	11.4	2.3	3.7	0.9	67.9	6.4	25.7	0.063	0.513	19.287878	-98.410761
X. C. San Martín Texmelucan - Tlaxcala - El Molinito	220.95	3	2	11623	3.3	64.6	6.4	4.9	2.6	11.4	2.2	3.7	0.9	67.9	6.4	25.7	0.067	0.513	19.287878	-98.410652
Plaza de Cobro San Martín Texmelucan	222.00	1	1	8169	0.4	50.6	2.1	5.5	5.8	21.4	3.8	8.2	2.2	51.0	2.1	46.9	0.067	0.500	19.301809	-98.409588
Plaza de Cobro San Martín Texmelucan	222.00	1	2	8169	0.4	50.6	2.1	5.5	5.8	21.4	3.8	8.2	2.2	51.0	2.1	46.9	0.067	0.500	19.301809	-98.409588
T. C. San Martín Texmelucan - Ocotoxco (Cuota)	222.44																			
T. C. México - Puebla (Cuota)	226.73	1	1	10630	3.7	62.6	7.1	4.2	3.5	11.9	2.2	3.9	0.9	66.3	7.1	26.6	0.070	0.514	19.270164	-98.419889
T. C. México - Puebla (Cuota)	226.73	1	2	11254	3.7	62.5	7.1	4.2	3.6	11.9	2.2	3.9	0.9	66.2	7.1	26.7	0.066	0.514	19.270014	-98.419878

21 CARR: México - Puebla (Cuota)

CLAVE: 00450

RUTA: MEX-150D

AÑO: 2023

LUGAR	ESTACION				CLASIFICACION VEHICULAR EN PORCIENTO										COORDENADAS					
	KM	TE	SC	TDPA	M	A	B	C2	C3	T3S2	T3S3	T3S2R4	OTROS	A	B	C	K'	D	LATITUD	LONGITUD
México	0.00																			
Ent Concordía (T. Izq. Los Reyes) Central	17.00	3	1	84544	3.3	88.3	1.4	4.0	0.7	1.3	0.5	0.2	0.3	91.6	1.4	7.0	0.067	0.502	19.351412	-98.987251
Ent Concordía (T. Izq. Los Reyes) Lateral	17.00	3	1	31308	4.4	83.0	2.0	7.9	0.6	0.9	0.8	0.2	0.2	87.4	2.0	10.6	0.071	0.529	19.351125	-98.987175
Ent Concordía (T. Izq. Los Reyes) Central	17.00	3	2	87173	2.8	87.9	1.6	4.3	0.6	1.5	0.8	0.2	0.3	90.7	1.6	7.7	0.062	0.502	19.355279	-98.991076
Ent Concordía (T. Izq. Los Reyes) Lateral	17.00	3	2	26061	4.4	81.3	2.0	8.4	1.1	1.3	1.0	0.2	0.3	85.7	2.0	12.3	0.065	0.529	19.355366	-98.991002
Lim. Edos. Term. CDMX Ppia. Méx.	17.51																			
Av. Las Torres (Eje 6) Lateral	19.27	1	1	29814	4.6	78.5	2.1	11.5	1.0	1.6	0.4	0.2	0.1	83.1	2.1	14.8	0.067	0.509	19.348056	-98.983964
Av. Las Torres (Eje 6) Central	19.27	1	1	76942	4.0	87.1	1.5	4.2	0.8	1.4	0.6	0.2	0.2	91.1	1.5	7.4	0.066	0.503	19.348169	-98.983864
Av. Las Torres (Eje 6) Lateral	19.27	1	2	31046	4.7	78.4	1.6	11.8	0.6	1.9	0.5	0.2	0.3	83.1	1.6	15.3	0.072	0.509	19.351424	-98.986870
Av. Las Torres (Eje 6) Central	19.27	1	2	81266	4.2	87.4	1.2	4.1	1.1	1.3	0.4	0.2	0.1	91.6	1.2	7.2	0.062	0.503	19.351338	-98.986963
Av. Las Torres (Eje 6) Central	19.27	3	1	74081	4.1	86.8	1.6	3.6	1.1	1.3	1.0	0.2	0.3	90.9	1.6	7.5	0.065	0.509	19.339795	-98.976424
Av. Las Torres (Eje 6) Lateral	19.27	3	1	28313	3.0	77.0	2.3	13.8	1.2	1.8	0.6	0.2	0.1	80.0	2.3	17.7	0.066	0.514	19.339735	-98.976548
Av. Las Torres (Eje 6) Central	19.27	3	2	81435	3.6	87.4	1.6	3.9	1.0	1.2	0.8	0.3	0.2	91.0	1.6	7.4	0.063	0.509	19.342375	-98.977919
Av. Las Torres (Eje 6) Lateral	19.27	3	2	25239	3.2	75.7	2.3	14.0	1.7	2.0	0.6	0.3	0.2	78.9	2.3	18.8	0.066	0.514	19.342479	-98.977768
Eje 10 Sur (Lateral)	22.80	1	1	33339	4.9	80.9	1.8	9.9	0.8	1.1	0.2	0.3	0.1	85.8	1.8	12.4	0.070	1.000	19.329589	-98.965702
Eje 10 Sur (Central)	22.80	1	1	84251	2.3	87.3	1.7	5.5	0.9	1.1	0.9	0.1	0.2	89.6	1.7	8.7	0.070	0.555	19.329670	-98.965626
Eje 10 Sur (Central)	22.80	1	2	108004	2.6	84.3	2.7	6.0	1.3	1.5	1.1	0.2	0.3	86.9	2.7	10.4	0.057	0.555	19.332123	-98.968418

TLAXCALA

21 CARR: México - Puebla (Cuota)

CLAVE: 00450

RUTA: MEX-150D

AÑO: 2023

LUGAR	ESTACION				CLASIFICACION VEHICULAR EN PORCIENTO										COORDENADAS					
	KM	TE	SC	TDPA	M	A	B	C2	C3	T3S2	T3S3	T3S2R4	OTROS	A	B	C	K'	D	LATITUD	LONGITUD
Eje 10 Sur (Central)	22.80	3	1	51374	2.8	84.8	2.5	5.8	1.2	1.9	0.5	0.2	0.3	87.6	2.5	9.9	0.069	0.530	19.315299	-98.948730
Eje 10 Sur (Lateral)	22.80	3	1	47390	5.3	80.6	1.9	10.0	0.6	1.0	0.4	0.1	0.1	85.9	1.9	12.2	0.077	0.519	19.315233	-98.948787
Eje 10 Sur (Lateral)	22.80	3	2	43601	4.9	80.9	2.1	10.0	0.6	0.8	0.4	0.2	0.1	85.8	2.1	12.1	0.076	0.519	19.315595	-98.948472
Eje 10 Sur (Central)	22.80	3	2	45539	2.8	84.9	2.2	6.0	1.1	1.9	0.6	0.2	0.3	87.7	2.2	10.1	0.078	0.530	19.315522	-98.948531
X. C. Santa Bárbara - Izúcar de Matamoros (Central)	32.14	1	1	38114	3.6	87.4	1.9	2.6	2.0	1.4	0.3	0.5	0.3	91.0	1.9	7.1	0.081	0.510	19.292282	-98.891955
X. C. Santa Bárbara - Izúcar de Matamoros (Lateral)	32.14	1	1	15106	2.8	85.1	1.6	6.8	1.5	1.5	0.3	0.3	0.1	87.9	1.6	10.5	0.065	0.539	19.292134	-98.891949
X. C. Santa Bárbara - Izúcar de Matamoros (Lateral)	32.14	1	2	17629	2.7	84.8	1.6	7.0	1.7	1.6	0.3	0.2	0.1	87.5	1.6	10.9	0.083	0.539	19.292590	-98.892042
X. C. Santa Bárbara - Izúcar de Matamoros (Central)	32.14	1	2	43042	3.4	87.0	2.2	3.2	1.8	1.5	0.2	0.4	0.3	90.4	2.2	7.4	0.065	0.510	19.292445	-98.892037
X. C. Santa Bárbara - Izúcar de Matamoros (Lateral)	32.14	3	1	1457	2.2	68.5	5.1	9.1	2.2	6.7	1.7	4.2	0.3	70.7	5.1	24.2	0.077	0.537	19.294624	-98.876197
X. C. Santa Bárbara - Izúcar de Matamoros (Central)	32.14	3	1	13594	1.0	77.6	3.4	6.0	5.3	5.0	0.6	0.9	0.2	78.6	3.4	18.0	0.068	0.501	19.294774	-98.876226
X. C. Santa Bárbara - Izúcar de Matamoros (Central)	32.14	3	2	13650	0.9	77.3	3.4	6.3	5.3	5.2	0.7	0.8	0.1	78.2	3.4	18.4	0.065	0.501	19.294980	-98.875891
X. C. Santa Bárbara - Izúcar de Matamoros (Lateral)	32.14	3	2	1257	2.7	68.8	4.8	8.6	1.9	6.7	1.6	4.5	0.4	71.5	4.8	23.7	0.069	0.537	19.295358	-98.875014
Plaza de Cobro San Marcos	33.30	2	1	16974	0.6	74.9	5.1	5.2	3.6	7.0	0.6	2.5	0.5	75.5	5.1	19.4	0.068	0.500	19.296272	-98.870712
Plaza de Cobro San Marcos	33.30	2	2	16974	0.6	74.9	5.1	5.2	3.6	7.0	0.6	2.5	0.5	75.5	5.1	19.4	0.068	0.500	19.296272	-98.870712
T. Izq. Río Frío	63.79	3	1	17203	1.0	77.6	4.5	7.1	2.1	4.7	0.7	1.9	0.4	78.6	4.5	16.9	0.099	0.507	19.350139	-98.657828
T. Izq. Río Frío	63.79	3	2	17657	0.9	77.7	4.9	6.6	2.0	5.0	0.7	1.8	0.4	78.6	4.9	16.5	0.098	0.507	19.351616	-98.660184
Lim. Edos. Term. Méx. Ppia. Pue.	65.46																			
T. Der. A San Rafael Ixtapaluca	76.80	3	1	25810	2.6	74.7	7.2	4.9	2.4	4.9	0.8	2.0	0.5	77.3	7.2	15.5	0.062	0.505	19.331664	-98.545479
T. Der. A San Rafael Ixtapaluca	76.80	3	2	26308	3.0	74.2	7.1	5.2	2.3	5.0	0.9	1.8	0.5	77.2	7.1	15.7	0.069	0.505	19.331780	-98.545430
T. Izq. Tlaxcala	90.61	1	1	26095	1.8	75.7	5.3	6.0	2.0	5.7	1.0	2.1	0.4	77.5	5.3	17.2	0.065	0.502	19.274034	-98.436283
T. Izq. Tlaxcala	90.61	1	2	25912	1.9	74.5	5.5	6.3	2.3	5.9	1.1	2.0	0.5	76.4	5.5	18.1	0.080	0.502	19.274132	-98.436223
T. Izq. Tlaxcala	90.61	3	1	24154	1.2	70.9	5.8	7.9	2.2	6.9	1.8	2.7	0.6	72.1	5.8	22.1	0.058	0.530	19.261849	-98.417515
T. Izq. Tlaxcala	90.61	3	2	27248	1.1	71.3	5.5	7.7	2.4	6.6	1.8	3.0	0.6	72.4	5.5	22.1	0.066	0.530	19.261937	-98.417434
Plaza de Cobro San Martín Texmelucan	91.17	2	1	26578	0.8	69.4	4.7	4.7	4.4	10.1	1.2	3.9	0.8	70.2	4.7	25.1	0.068	0.500	19.241190	-98.385786
Plaza de Cobro San Martín Texmelucan	91.17	2	2	26578	0.8	69.4	4.7	4.7	4.4	10.1	1.2	3.9	0.8	70.2	4.7	25.1	0.068	0.500	19.241190	-98.385786
Lim. Edos. Term. Pue. Ppia. Tlax.	99.11																			
T. Der. Aeropuerto Internacional De Puebla	101.10	3	1	33827	1.5	74.4	4.3	7.0	2.3	6.1	1.7	1.8	0.9	75.9	4.3	19.8	0.066	0.509	19.210354	-98.350918
T. Der. Aeropuerto Internacional De Puebla	101.10	3	2	32487	1.3	75.0	4.0	7.3	2.1	5.9	1.7	1.9	0.8	76.3	4.0	19.7	0.077	0.509	19.211564	-98.352187
X. C. Xoxtla - Huactzinco	107.98	1	1	40173	1.3	76.3	3.5	6.9	2.1	5.8	1.7	1.6	0.8	77.6	3.5	18.9	0.065	0.515	19.179809	-98.313740
X. C. Xoxtla - Huactzinco	107.98	1	2	42952	1.3	75.8	3.7	7.2	1.9	6.0	1.5	1.7	0.9	77.1	3.7	19.2	0.066	0.515	19.179894	-98.313656
X. C. Xoxtla - Huactzinco	107.98	3	1	50157	1.7	77.7	3.1	7.1	2.0	4.5	1.4	1.9	0.6	79.4	3.1	17.5	0.062	0.510	19.163043	-98.296562
X. C. Xoxtla - Huactzinco	107.98	3	2	47962	1.7	78.3	3.0	7.0	1.8	4.3	1.3	2.1	0.5	80.0	3.0	17.0	0.066	0.510	19.166464	-98.298777
Lim. Edos. Term. Tlax. Ppia. Pue.	108.00																			
Anillo Periferico Poniente de Puebla (Central)	114.00	3	1	34937	2.4	69.3	5.4	7.4	3.0	7.0	1.1	3.6	0.8	71.7	5.4	22.9	0.078	0.514	19.127040	-98.263774
Anillo Periferico Poniente de Puebla (Lateral)	114.00	3	1	35900	2.5	80.3	2.7	6.2	1.9	3.3	1.5	0.9	0.7	82.8	2.7	14.5	0.065	0.516	19.128437	-98.265214

TLAXCALA

21 CARR: México - Puebla (Cuota)

CLAVE: 00450

RUTA: MEX-150D

AÑO: 2023

LUGAR	ESTACION				CLASIFICACION VEHICULAR EN PORCIENTO										COORDENADAS					
	KM	TE	SC	TDPA	M	A	B	C2	C3	T3S2	T3S3	T3S2R4	OTROS	A	B	C	K'	D	LATITUD	LONGITUD
Anillo Periferico Poniente de Puebla (Central)	114.00	3	2	32879	2.4	69.8	5.4	6.9	2.8	7.2	1.2	3.5	0.8	72.2	5.4	22.4	0.068	0.514	19.127094	-98.263737
Anillo Periferico Poniente de Puebla (Lateral)	114.00	3	2	33501	2.3	80.0	2.5	6.5	1.7	3.6	1.6	1.0	0.8	82.3	2.5	15.2	0.071	0.516	19.127483	-98.263941
Boulevard Hermanos Serdán	120.46	3	1	64638	1.8	82.1	2.7	5.5	1.9	3.3	1.6	0.5	0.6	83.9	2.7	13.4	0.069	0.512	19.089452	-98.217133
Boulevard Hermanos Serdán	120.46	3	2	61196	2.0	82.8	2.6	5.1	1.7	3.2	1.4	0.7	0.5	84.8	2.6	12.6	0.079	0.512	19.089524	-98.217097
X. C. Puebla - Tlaxcala (Lateral)	123.00	3	1	30774	2.1	83.5	2.0	9.0	1.0	1.3	0.5	0.4	0.2	85.6	2.0	12.4	0.073	0.503	19.086021	-98.200545
X. C. Puebla - Tlaxcala (Central)	123.00	3	1	48790	2.1	82.7	2.4	5.4	1.8	3.2	1.2	0.7	0.5	84.8	2.4	12.8	0.071	0.507	19.086143	-98.200508
X. C. Puebla - Tlaxcala (Lateral)	123.00	3	2	31200	1.9	83.2	2.3	9.2	1.0	1.2	0.5	0.4	0.3	85.1	2.3	12.6	0.069	0.503	19.086098	-98.199158
X. C. Puebla - Tlaxcala (Central)	123.00	3	2	49221	2.3	83.1	2.0	5.1	1.6	3.5	1.3	0.5	0.6	85.4	2.0	12.6	0.067	0.507	19.085968	-98.199195
T. C. Puebla - Tlaxcala	124.90																			

22 CARR: San Martin Texmelucan - Tlaxcala - El Molinito (Cuota)

CLAVE: 00212

RUTA: MEX-117D

AÑO: 2023

LUGAR	ESTACION				CLASIFICACION VEHICULAR EN PORCIENTO										COORDENADAS					
	KM	TE	SC	TDPA	M	A	B	C2	C3	T3S2	T3S3	T3S2R4	OTROS	A	B	C	K'	D	LATITUD	LONGITUD
T. C. México - Puebla (Cuota)	0.00																			
X. C. San Martín Texmelucan - Tlaxcala	1.80	1	1	2090	3.4	84.9	3.9	2.9	1.4	2.5	0.5	0.4	0.1	88.3	3.9	7.8	0.090	0.509	19.293418	-98.414791
X. C. San Martín Texmelucan - Tlaxcala	1.80	1	2	2012	3.3	84.8	4.0	3.2	1.6	2.3	0.4	0.3	0.1	88.1	4.0	7.9	0.083	0.509	19.293487	-98.414850
Lim. Edos. Term. Pue. Ppia. Tlax.	4.05																			
Plaza de Cobro San Martín Texmelucan	5.45	2	1	2814	1.0	78.9	5.6	5.0	2.3	3.8	1.3	1.5	0.6	79.9	5.6	14.5	0.088	0.500	19.301602	-98.404063
Plaza de Cobro San Martín Texmelucan	5.45	2	2	2814	1.0	78.9	5.6	5.0	2.3	3.8	1.3	1.5	0.6	79.9	5.6	14.5	0.088	0.500	19.301602	-98.404063
X. C. San Martín Texmelucan - Tlaxcala (Trébol)	24.75	1	1	21557	3.2	90.0	1.3	3.1	0.6	0.9	0.3	0.5	0.1	93.2	1.3	5.5	0.097	0.501	19.325687	-98.249785
X. C. San Martín Texmelucan - Tlaxcala (Trébol)	24.75	1	2	21654	3.2	89.5	1.5	3.1	0.7	1.1	0.3	0.5	0.1	92.7	1.5	5.8	0.088	0.501	19.325863	-98.249724
X. C. San Martín Texmelucan - Tlaxcala (Trébol)	24.75	3	1	18403	2.7	90.2	1.7	3.1	0.5	0.8	0.2	0.6	0.2	92.9	1.7	5.4	0.093	0.535	19.331590	-98.239783
X. C. San Martín Texmelucan - Tlaxcala (Trébol)	24.75	3	2	21162	2.5	89.5	1.9	3.3	0.7	1.0	0.4	0.6	0.1	92.0	1.9	6.1	0.079	0.535	19.331678	-98.239838
T. Izq. Tizatlán	29.00	3	1	20086	2.4	89.3	2.0	4.0	0.7	0.8	0.2	0.5	0.1	91.7	2.0	6.3	0.097	0.511	19.337712	-98.212154
T. Izq. Tizatlán	29.00	3	2	21013	2.4	89.9	1.5	3.6	0.7	1.0	0.2	0.6	0.1	92.3	1.5	6.2	0.070	0.511	19.337663	-98.214228
T. Der. San Pablo Apetatitlán	31.65	3	1	41568	3.4	88.4	1.4	3.2	1.1	1.3	0.4	0.6	0.2	91.8	1.4	6.8	0.068	0.524	19.347270	-98.194940
T. Der. San Pablo Apetatitlán	31.65	3	2	37355	3.5	87.8	1.6	3.7	0.9	1.3	0.4	0.6	0.2	91.3	1.6	7.1	0.076	0.524	19.347473	-98.194959
Ocotoxco	35.20	1	1	35024	2.6	88.7	1.3	3.4	1.0	1.6	0.7	0.5	0.2	91.3	1.3	7.4	0.091	0.507	19.379022	-98.179234
Ocotoxco	35.20	1	2	33909	2.6	88.7	1.3	3.4	1.0	1.6	0.7	0.5	0.2	91.3	1.3	7.4	0.082	0.507	19.379055	-98.179382

TLAXCALA

23 CARR: Tlaxco - Tejocotal (Cuota)

CLAVE: 00209

RUTA: MEX-119D

AÑO: 2023

LUGAR	ESTACION				CLASIFICACION VEHICULAR EN PORCIENTO													COORDENADAS		
	KM	TE	SC	TDPA	M	A	B	C2	C3	T3S2	T3S3	T3S2R4	OTROS	A	B	C	K'	D	LATITUD	LONGITUD
T.C. Apan - Tlaxco	23.00	3	0	5392	1.5	86.2	3.0	3.5	1.8	2.2	1.0	0.7	0.1	87.7	3.0	9.3	0.108	0.503	19.607566	-98.156693
Lim. Edos. Term. Tlax. Ppia. Pue.	30.70																			
Ent. Chignahuapan	56.20	3	0	3761	1.8	86.2	2.5	3.1	2.0	2.2	1.3	0.8	0.1	88.0	2.5	9.5	0.095	0.506	19.870721	-98.061081
Lim. Edos. Term. Pue. Ppia. Hgo.	84.80																			
T. C. Apizaco - Tejocotal	85.60																			

24 CARR: Ramal a Altzayanca de Hidalgo

CLAVE: 29562

RUTA: TLAX

AÑO: 2023

LUGAR	ESTACION				CLASIFICACION VEHICULAR EN PORCIENTO													COORDENADAS		
	KM	TE	SC	TDPA	M	A	B	C2	C3	T3S2	T3S3	T3S2R4	OTROS	A	B	C	K'	D	LATITUD	LONGITUD
T. C. Los Reyes - Zacatepec	0.00	3	0	2843	3.8	77.0	1.0	13.5	0.8	1.9	0.7	0.4	0.9	80.8	1.0	18.2	0.082	0.531	19.322628	-97.845002
Xicoténcatl	6.50	3	0	2957	6.5	85.9	0.9	5.2	0.8	0.4	0.1	0.1	0.1	92.4	0.9	6.7	0.075	0.512	19.356741	-97.831996
Altzayanca de Hidalgo	15.00	1	0	2516	6.4	85.3	0.3	7.6	0.2	0.1	0.0	0.1	0.0	91.7	0.3	8.0	0.083	0.505	19.422762	-97.804295

25 CARR: Ramal a San Pedro Ecatepec

CLAVE: 29561

RUTA: TLAX

AÑO: 2023

LUGAR	ESTACION				CLASIFICACION VEHICULAR EN PORCIENTO													COORDENADAS		
	KM	TE	SC	TDPA	M	A	B	C2	C3	T3S2	T3S3	T3S2R4	OTROS	A	B	C	K'	D	LATITUD	LONGITUD
T. C. Apizaco - Tejocotal	0.00	3	0	1881	5.3	89.0	0.5	4.1	0.7	0.3	0.1	0.0	0.0	94.3	0.5	5.2	0.090	0.512	19.514490	-98.119646
San Pedro Ecatepec	4.60	1	0	2063	5.3	88.8	0.5	4.0	0.9	0.4	0.1	0.0	0.0	94.1	0.5	5.4	0.098	0.507	19.518921	-98.153731

26 CARR: Ramal a Xalostoc

CLAVE: 29563

RUTA: TLAX

AÑO: 2023

LUGAR	ESTACION				CLASIFICACION VEHICULAR EN PORCIENTO													COORDENADAS		
	KM	TE	SC	TDPA	M	A	B	C2	C3	T3S2	T3S3	T3S2R4	OTROS	A	B	C	K'	D	LATITUD	LONGITUD
T. C. Los Reyes - Zacatepec	0.00	3	0	10126	5.2	92.1	0.1	1.7	0.6	0.2	0.0	0.1	0.0	97.3	0.1	2.6	0.085	0.512	19.396013	-98.057157
Xalostoc	2.50	1	0	10945	5.7	90.1	0.1	3.4	0.2	0.2	0.2	0.1	0.0	95.8	0.1	4.1	0.084	0.505	19.400464	-98.051571

27 CARR: Xalostoc - Terrenate

CLAVE: 29390

RUTA: TLAX

AÑO: 2023

LUGAR	ESTACION				CLASIFICACION VEHICULAR EN PORCIENTO													COORDENADAS		
	KM	TE	SC	TDPA	M	A	B	C2	C3	T3S2	T3S3	T3S2R4	OTROS	A	B	C	K'	D	LATITUD	LONGITUD
Xalostoc	0.00	3	0	4213	3.8	91.8	0.7	2.3	0.9	0.3	0.0	0.2	0.0	95.6	0.7	3.7	0.093	0.505	19.431224	-98.014315
San Francisco Teometitla	7.10	3	0	2103	6.2	89.2	0.5	3.1	0.7	0.2	0.0	0.0	0.1	95.4	0.5	4.1	0.100	0.503	19.458822	-97.978827
T. C. Huamantla - Terrenate	17.50	1	0	2307	5.8	89.8	0.5	3.0	0.6	0.2	0.0	0.0	0.1	95.6	0.5	3.9	0.100	0.504	19.467210	-97.931034

TLAXCALA

28 CARR: Puebla - Tlaxcala (Cuota)

CLAVE:

RUTA: PUE-D

AÑO: 2023

LUGAR	ESTACION				CLASIFICACION VEHICULAR EN PORCIENTO										COORDENADAS					
	KM	TE	SC	TDPA	M	A	B	C2	C3	T3S2	T3S3	T3S2R4	OTROS	A	B	C	K'	D	LATITUD	LONGITUD
Anillo Periferico Poniente de Puebla	0.00	3	0	13260	1.3	90.6	1.6	2.7	0.9	1.2	0.5	0.9	0.3	91.9	1.6	6.5	0.080	0.515	19.150542	-98.269370
Lim. Edos. Term. Pue. Ppia. Tlax	2.40																			
T Der. Zacatelco	8.00	1	0	10456	1.3	89.4	1.6	2.9	1.0	1.8	0.8	1.0	0.2	90.7	1.6	7.7	0.073	0.513	19.202077	-98.261876
T Der. Zacatelco	8.00	3	0	10305	1.7	89.0	1.5	3.1	1.0	1.6	0.6	1.1	0.4	90.7	1.5	7.8	0.085	0.519	19.216394	-98.267998
Lib. de Tlaxcala (Cuota)	17.80	1	0	10176	1.6	88.6	1.8	3.2	1.1	1.6	0.7	1.1	0.3	90.2	1.8	8.0	0.082	0.503	19.279729	-98.248811

29 CARR: Acocotla - Vicente Guerrero

CLAVE: 29560

RUTA: MEX-TLAX

AÑO: 2023

LUGAR	ESTACION				CLASIFICACION VEHICULAR EN PORCIENTO										COORDENADAS					
	KM	TE	SC	TDPA	M	A	B	C2	C3	T3S2	T3S3	T3S2R4	OTROS	A	B	C	K'	D	LATITUD	LONGITUD
T. C. Los Reyes - Zacatepec	0.00	3	0	2122	3.9	75.8	5.3	5.7	2.9	2.5	1.9	1.8	0.2	79.7	5.3	15.0	0.085	0.529	19.371177	-98.028645
Vicente Guerrero	35.60	1	0	2805	9.5	72.8	1.9	15.2	0.1	0.4	0.1	0.0	0.0	82.3	1.9	15.8	0.100	0.504	19.135883	-98.144353

30 CARR: Apizaco - Emiliano Zapata

CLAVE: 29033

RUTA: TLAX-MEX-136

AÑO: 2023

LUGAR	ESTACION				CLASIFICACION VEHICULAR EN PORCIENTO										COORDENADAS					
	KM	TE	SC	TDPA	M	A	B	C2	C3	T3S2	T3S3	T3S2R4	OTROS	A	B	C	K'	D	LATITUD	LONGITUD
Apizaco	0.00	3	0	10448	8.1	81.4	0.4	3.6	0.7	4.1	0.9	0.2	0.6	89.5	0.4	10.1	0.087	0.509	19.417174	-98.129807
Capula	16.00	1	0	3324	5.1	91.1	0.5	2.6	0.5	0.1	0.1	0.0	0.0	96.2	0.5	3.3	0.079	0.501	19.530803	-98.040752
Emiliano Zapata	37.00	1	0	1598	8.5	88.8	0.5	1.2	0.7	0.1	0.1	0.1	0.0	97.3	0.5	2.2	0.089	0.502	19.552134	-97.917054

31 CARR: Calpulalpan - El Ocote

CLAVE: 00054

RUTA: MEX-HGO

AÑO: 2023

LUGAR	ESTACION				CLASIFICACION VEHICULAR EN PORCIENTO										COORDENADAS					
	KM	TE	SC	TDPA	M	A	B	C2	C3	T3S2	T3S3	T3S2R4	OTROS	A	B	C	K'	D	LATITUD	LONGITUD
Calpulalpan	0.00	3	0	9160	3.7	77.7	3.0	7.4	1.7	3.8	1.3	1.1	0.3	81.4	3.0	15.6	0.081	0.526	19.612920	-98.556217
X. C. Arco Norte de La Ciudad de México	4.00	3	1	4155	2.7	79.8	1.5	6.9	1.6	4.2	2.0	1.0	0.3	82.5	1.5	16.0	0.079	0.504	19.626371	-98.542473
X. C. Arco Norte de La Ciudad de México	4.00	3	2	4082	2.6	79.3	1.9	7.9	2.0	3.9	1.2	0.9	0.3	81.9	1.9	16.2	0.083	0.504	19.626462	-98.542586
Lim. Edos. Term. Tlax. Ppia. Hgo.	5.00																			
Apan	19.58	3	1	4824	4.6	87.1	0.5	5.7	1.4	0.3	0.1	0.3	0.0	91.7	0.5	7.8	0.070	0.506	19.728985	-98.471494
Apan	19.58	3	2	4707	4.8	86.6	0.7	5.7	1.4	0.4	0.2	0.2	0.0	91.4	0.7	7.9	0.074	0.506	19.728940	-98.471519
Tepeapulco	34.92	3	0	4563	3.6	90.0	1.0	2.3	1.6	1.0	0.4	0.1	0.0	93.6	1.0	5.4	0.093	0.505	19.799298	-98.561098
X. C. Venta de Carpio - Tulancingo	51.18	1	1	1478	2.7	86.1	0.7	6.0	3.2	0.7	0.6	0.0	0.0	88.8	0.7	10.5	0.097	0.512	19.918339	-98.576270
X. C. Venta de Carpio - Tulancingo	51.18	1	2	1409	2.8	84.4	0.7	7.6	3.1	0.9	0.4	0.1	0.0	87.2	0.7	12.1	0.088	0.512	19.918260	-98.576322
X. C. Venta de Carpio - Tulancingo	51.18	3	0	1920	3.6	87.4	0.7	3.9	2.1	1.9	0.3	0.1	0.0	91.0	0.7	8.3	0.097	0.511	19.929714	-98.583951

TLAXCALA

31 CARR: Calpulalpan - El Ocote

CLAVE: 00054

RUTA: MEX-HGO

AÑO: 2023

LUGAR	ESTACION				CLASIFICACION VEHICULAR EN PORCIENTO										COORDENADAS					
	KM	TE	SC	TDPA	M	A	B	C2	C3	T3S2	T3S3	T3S2R4	OTROS	A	B	C	K'	D	LATITUD	LONGITUD
El Ocote	70.44	1	1	1782	2.4	95.6	0.1	1.4	0.4	0.1	0.0	0.0	0.0	98.0	0.1	1.9	0.102	0.518	20.041233	-98.621347
El Ocote	70.44	1	2	1917	2.8	95.2	0.1	1.4	0.4	0.1	0.0	0.0	0.0	98.0	0.1	1.9	0.099	0.518	20.041378	-98.621375

32 CARR: Calpulalpan - Nanacamilpa

CLAVE: 29034

RUTA: TLAX-MEX-136

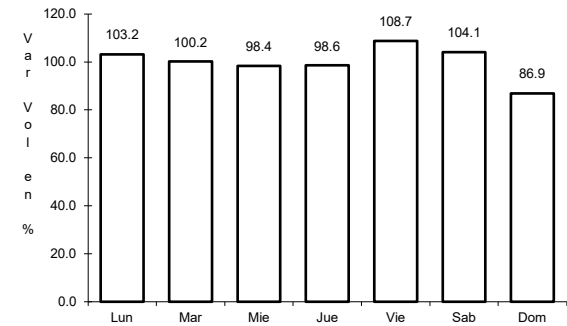
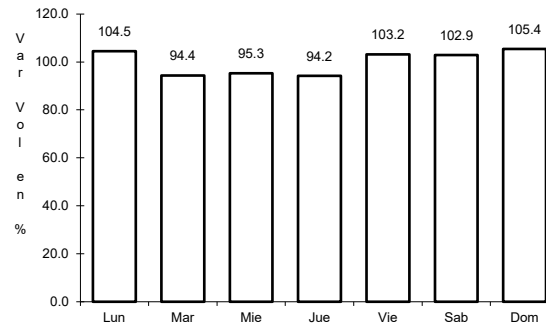
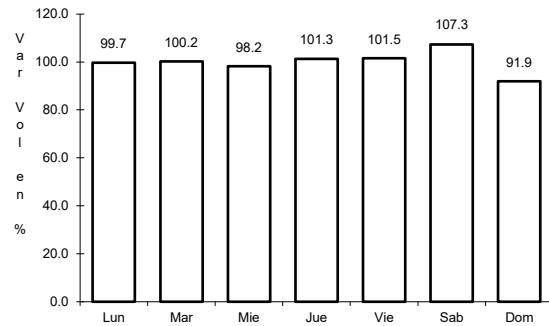
AÑO: 2023

LUGAR	ESTACION				CLASIFICACION VEHICULAR EN PORCIENTO										COORDENADAS						
	KM	TE	SC	TDPA	M	A	B	C2	C3	T3S2	T3S3	T3S2R4	OTROS	A	B	C	K'	D	LATITUD	LONGITUD	
Calpulalpan	0.00	3	0	2166	7.6	89.5	0.1	2.1	0.6	0.1	0.0	0.0	0.0	97.1	0.1	2.8	0.090	0.525	19.559897	-98.571604	
Mazapa	7.00																				
Nanacamilpa	15.50	1	0	2031	8.2	81.8	0.5	6.2	1.1	1.7	0.3	0.1	0.1	90.0	0.5	9.5	0.144	0.515	19.500276	-98.533099	

1 CARR: Amozoc - Teziutlán

CLAVE: 00210

ruta: MEX-129



Km: 1.40 Tipo: 3 Sent: 0

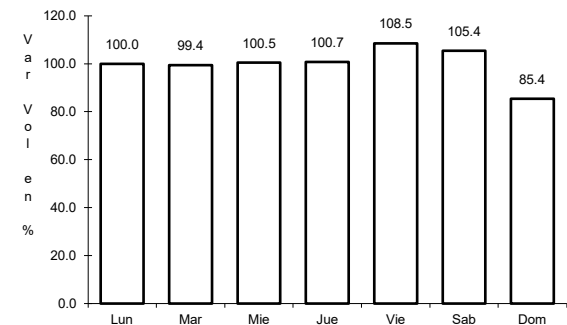
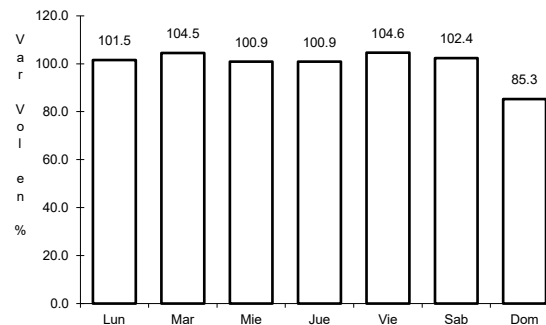
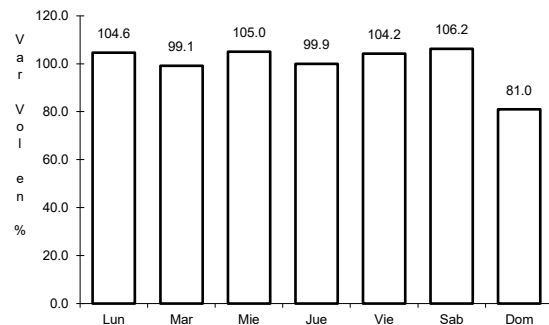
Km: 76.35 Tipo: 3 Sent: 0

Km: 157.80 Tipo: 1 Sent: 0

2 CARR: Apizaco - San Pablo Apetatitlán

CLAVE: 29035

ruta: MEX-119



Km: 0.00 Tipo: 3 Sent: 0

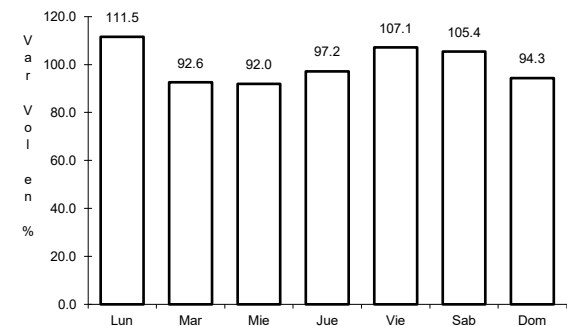
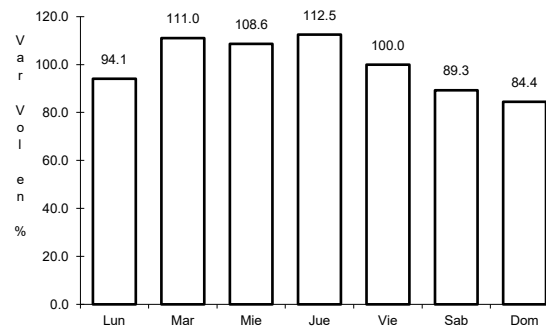
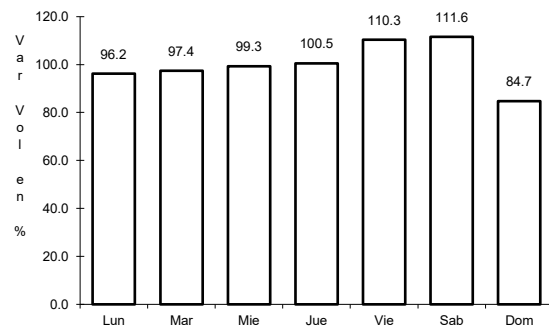
Km: 14.50 Tipo: 3 Sent: 0

Km: 20.00 Tipo: 1 Sent: 0

3 CARR: Apizaco - Tejocotal

CLAVE: 00430

ruta: MEX-119



Km: 0.00 Tipo: 3 Sent: 1

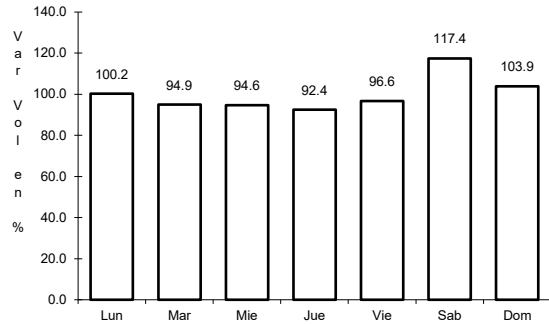
Km: 0.00 Tipo: 3 Sent: 2

Km: 113.15 Tipo: 1 Sent: 0

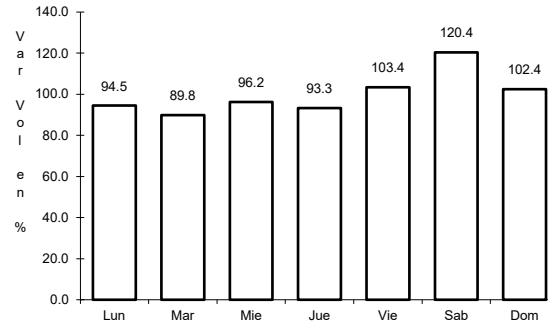
4 CARR: Huamantla - La Venta

CLAVE: 29564

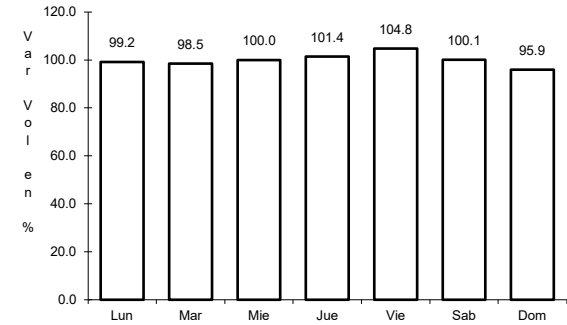
ruta: MEX-136



Km: 0.00 Tipo: 3 Sent: 1



Km: 0.00 Tipo: 3 Sent: 2

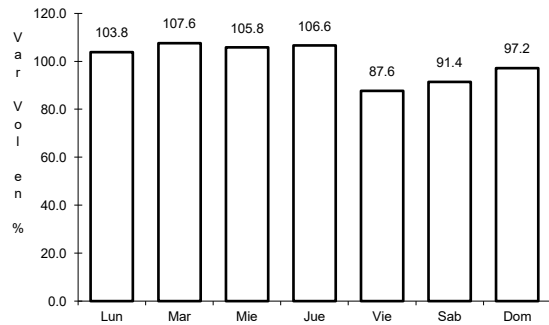


Km: 17.60 Tipo: 1 Sent: 0

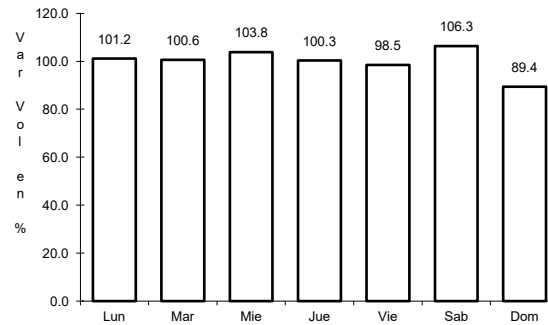
5 CARR: Huamantla - Terrenate

CLAVE: 29036

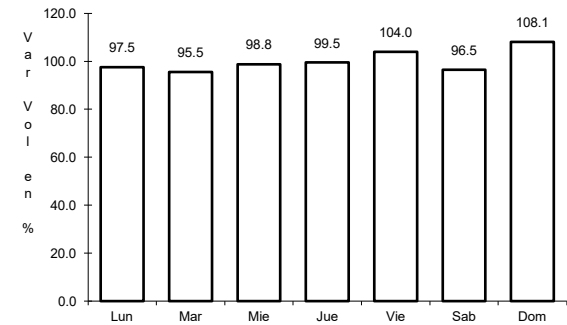
ruta: MEX-136



Km: 0.00 Tipo: 3 Sent: 0



Km: 12.50 Tipo: 1 Sent: 0

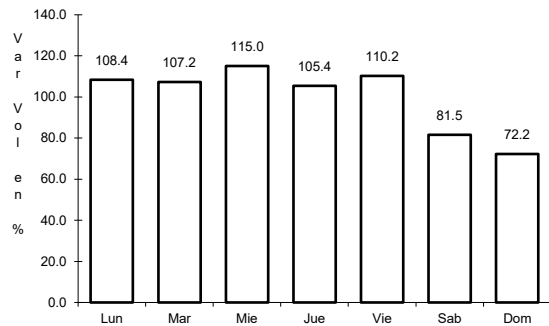


Km: 21.00 Tipo: 1 Sent: 0

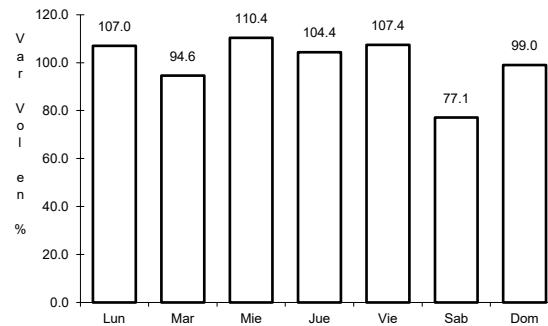
6 CARR: Libramiento de Apizaco

CLAVE: 29567

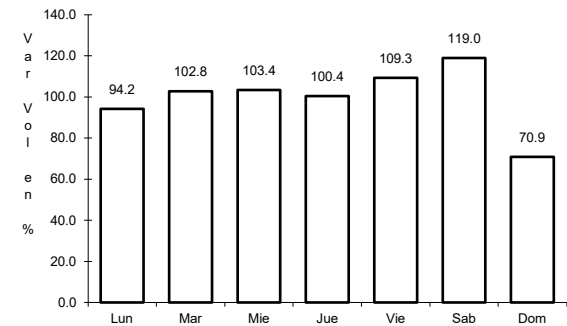
ruta: MEX-136



Km: 6.00 Tipo: 1 Sent: 1



Km: 6.00 Tipo: 1 Sent: 2

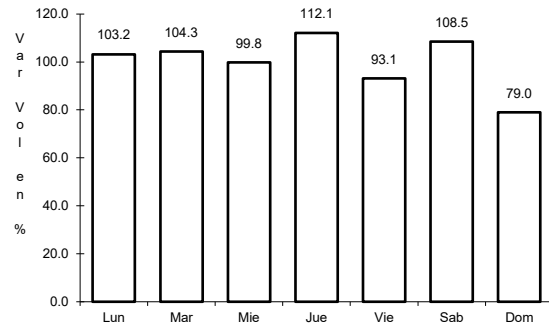


Km: 6.00 Tipo: 3 Sent: 1

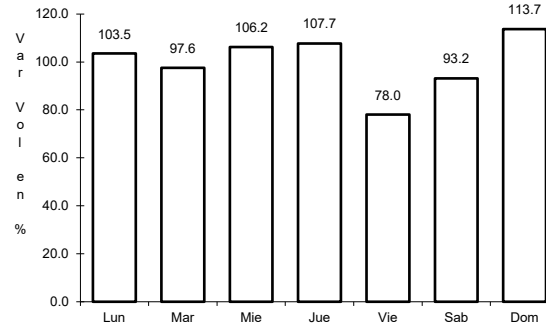
7 CARR: Libramiento de Santiago Tlalpan

CLAVE:

ruta: MEX-136



Km: 0.00 Tipo: 3 Sent: 1

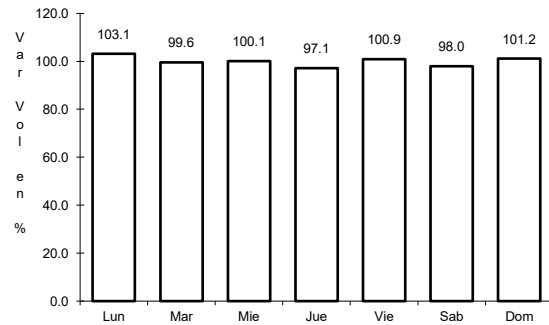


Km: 0.00 Tipo: 3 Sent: 2

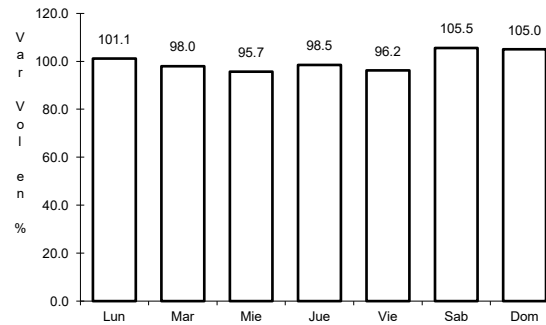
8 CARR: Libramiento Huamantla

CLAVE: 29567

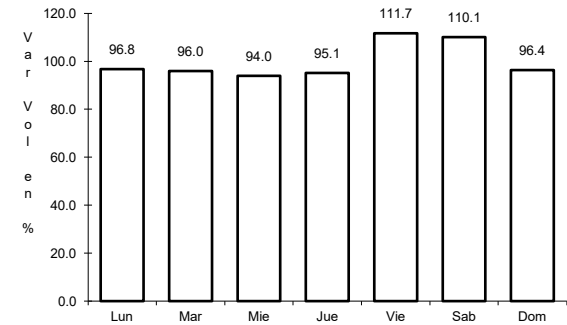
ruta: MEX-136



Km: 0.00 Tipo: 3 Sent: 1



Km: 0.00 Tipo: 3 Sent: 2

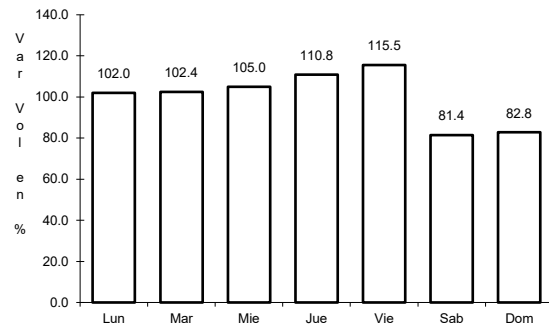


Km: 4.60 Tipo: 1 Sent: 1

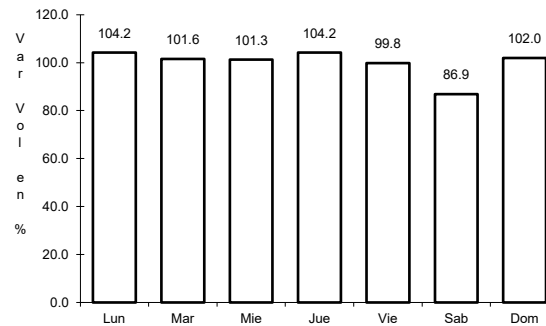
9 CARR: Libramiento Hueyotlipan

CLAVE: 29567

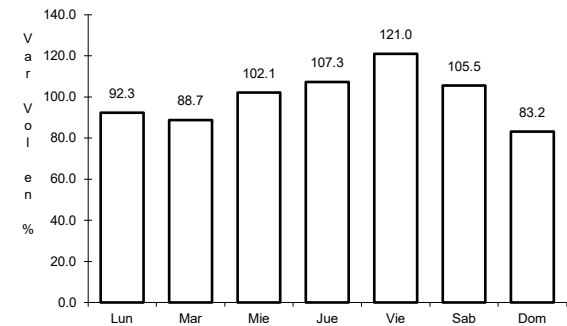
ruta: MEX-136



Km: 0.00 Tipo: 3 Sent: 1



Km: 0.00 Tipo: 3 Sent: 2

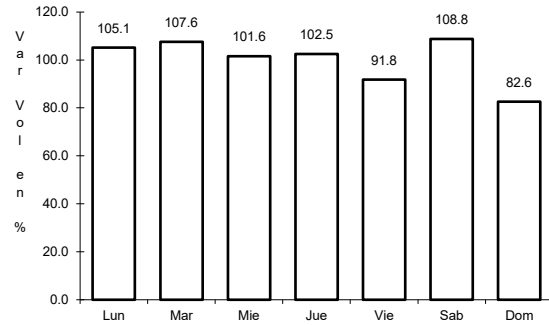


Km: 2.70 Tipo: 1 Sent: 1

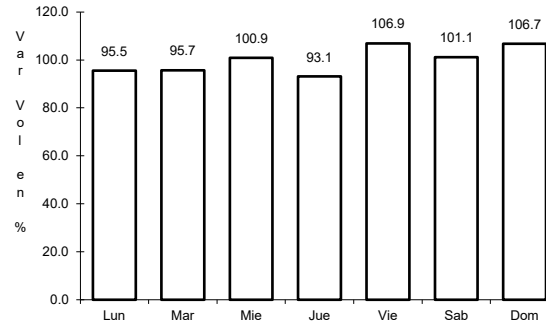
10 CARR: Los Reyes - Zacatepec

CLAVE: 00052

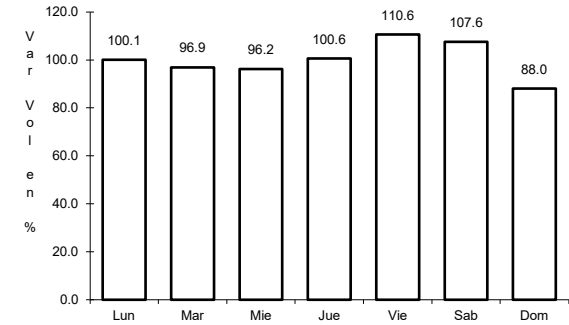
RUTA: MEX-136



Km: 3.35 Tipo: 3 Sent: 1



Km: 3.35 Tipo: 3 Sent: 2

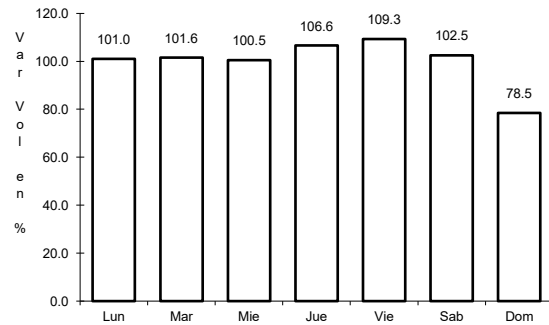


Km: 187.67 Tipo: 1 Sent: 0

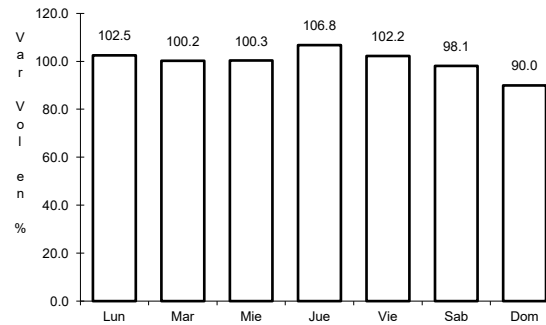
11 CARR: Puebla - Belem

CLAVE: 00055

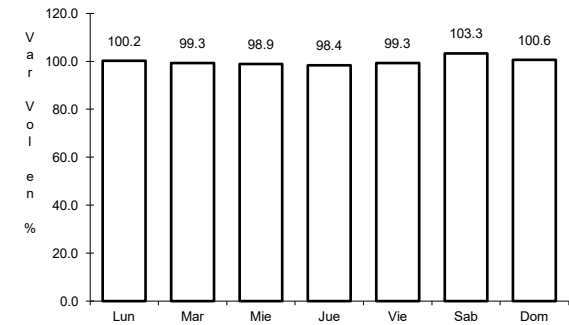
RUTA: MEX-121



Km: 4.00 Tipo: 3 Sent: 1



Km: 4.00 Tipo: 3 Sent: 2

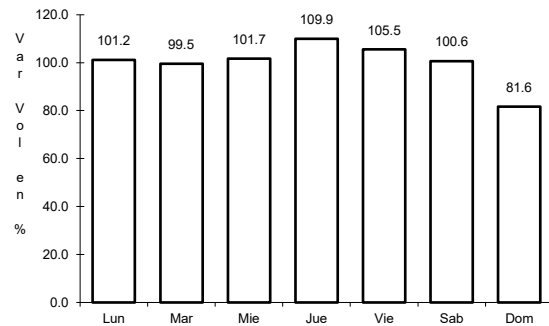


Km: 28.80 Tipo: 1 Sent: 1

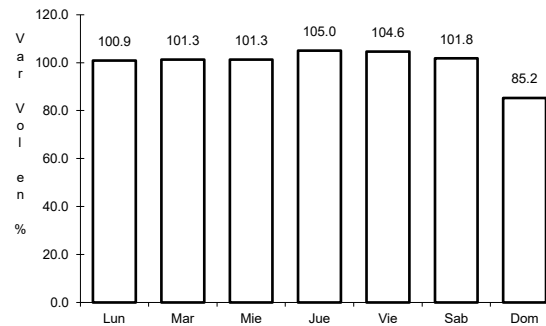
12 CARR: Puebla - Tlaxcala

CLAVE: 00475

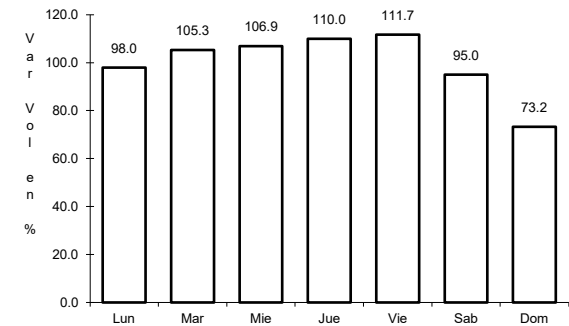
RUTA: MEX-119



Km: 5.41 Tipo: 3 Sent: 1



Km: 5.41 Tipo: 3 Sent: 2

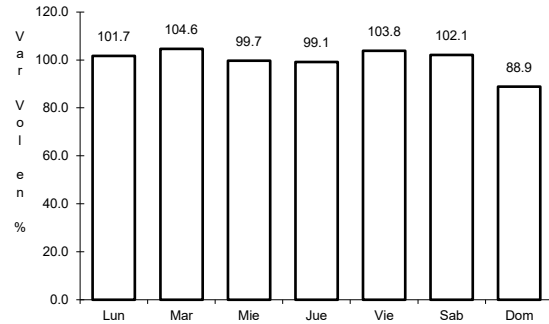


Km: 33.22 Tipo: 1 Sent: 1

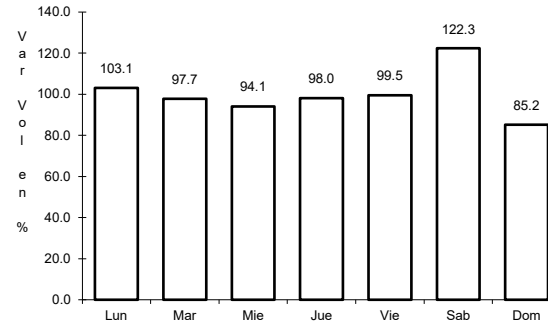
13 CARR: Ramal a San Felipe de Hidalgo

CLAVE: 29565

ruta: MEX-136



Km: 0.00 Tipo: 3 Sent: 0

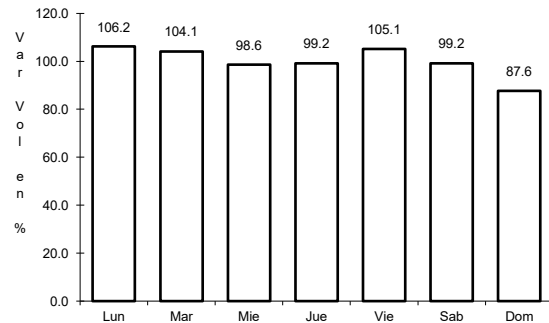


Km: 10.50 Tipo: 1 Sent: 0

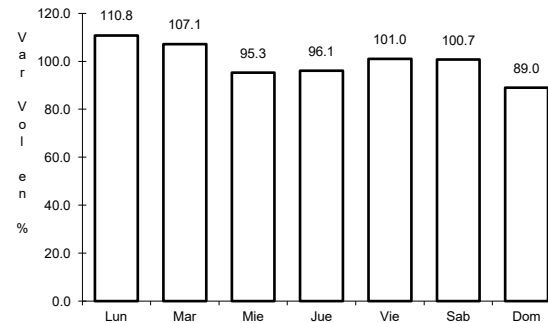
14 CARR: San Martín Texmelucan - Tlaxcala

CLAVE: 00158

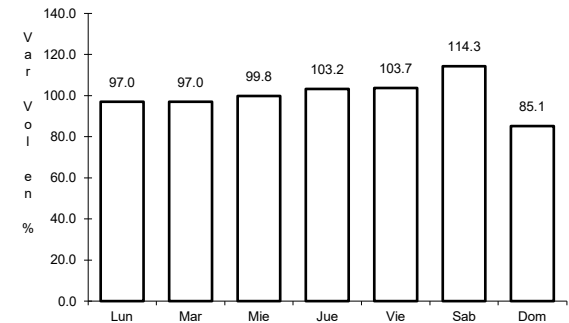
ruta: MEX-117



Km: 0.00 Tipo: 3 Sent: 1



Km: 0.00 Tipo: 3 Sent: 2

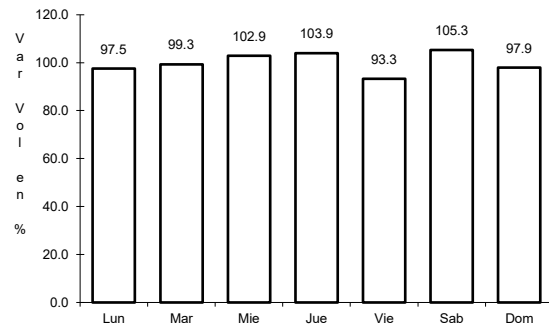


Km: 24.81 Tipo: 1 Sent: 0

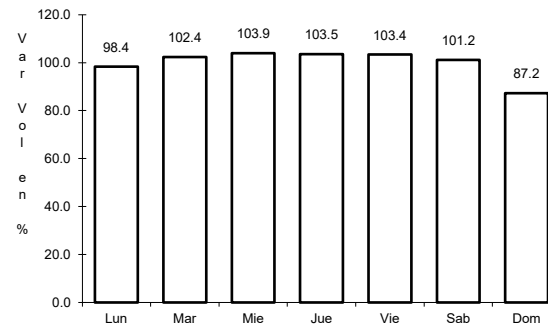
15 CARR: Tetlatlahuca - Santa Ana Chiautempan

CLAVE: 00158

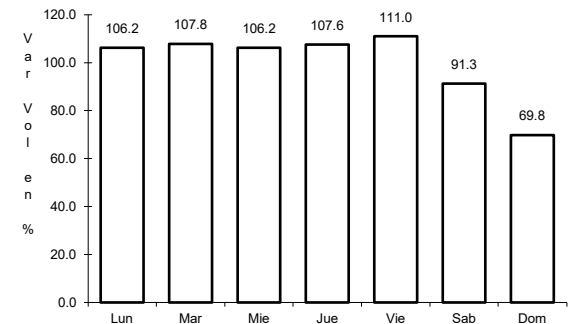
ruta: MEX-119



Km: 2.39 Tipo: 1 Sent: 0



Km: 5.50 Tipo: 1 Sent: 0

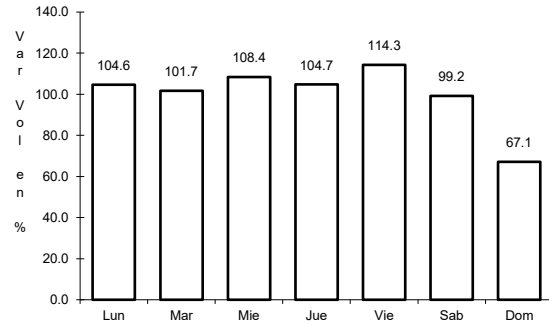


Km: 9.94 Tipo: 1 Sent: 0

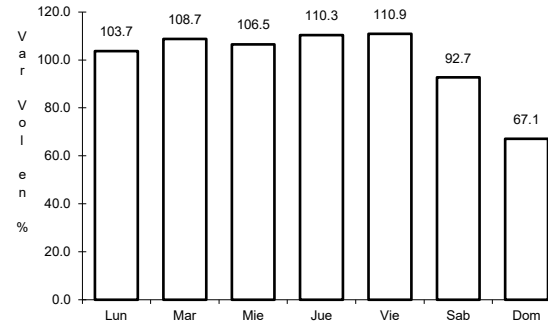
16 CARR: Tlaxcala - Belem

CLAVE: 29389

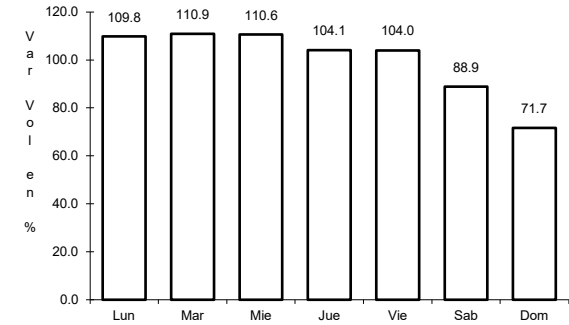
RUTA: MEX-119



Km: 3.91 Tipo: 1 Sent: 1



Km: 3.91 Tipo: 1 Sent: 2

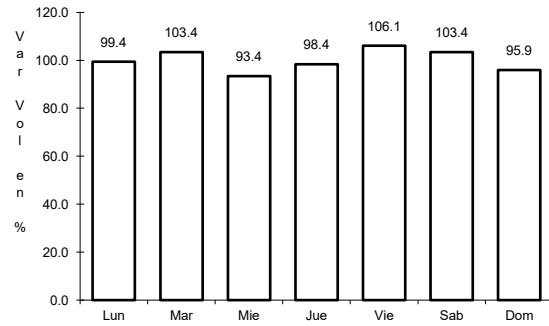


Km: 10.06 Tipo: 1 Sent: 0

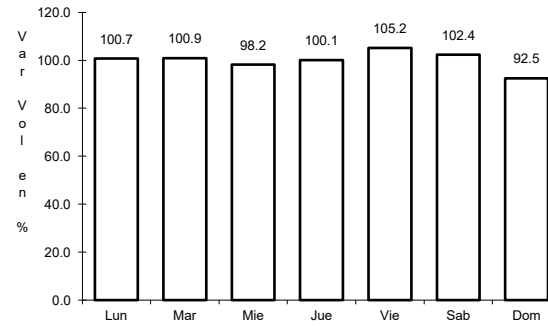
17 CARR: Villa Alta - T. C. (Puebla - Tlaxcala)

CLAVE: 29566

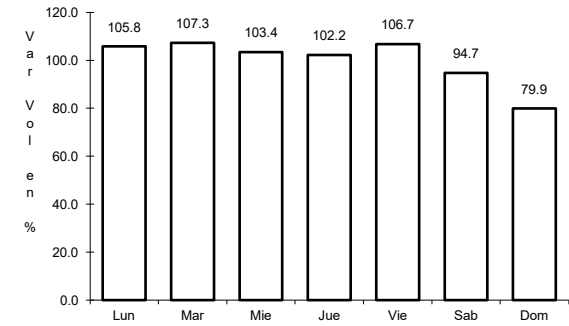
RUTA: MEX-119



Km: 0.00 Tipo: 3 Sent: 0



Km: 10.50 Tipo: 3 Sent: 0

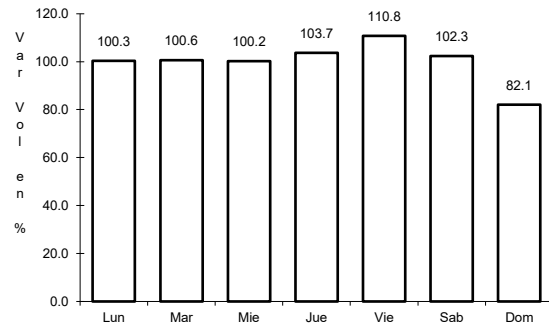


Km: 22.05 Tipo: 1 Sent: 0

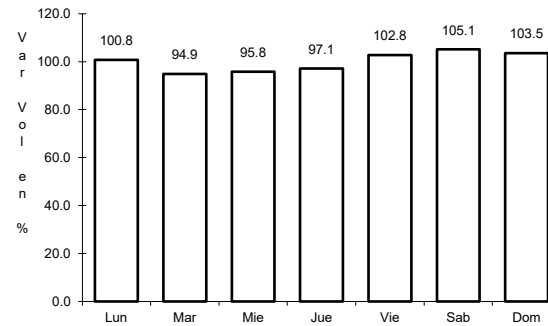
18 CARR: Amozoc - Perote (Cuota)

CLAVE: 00030

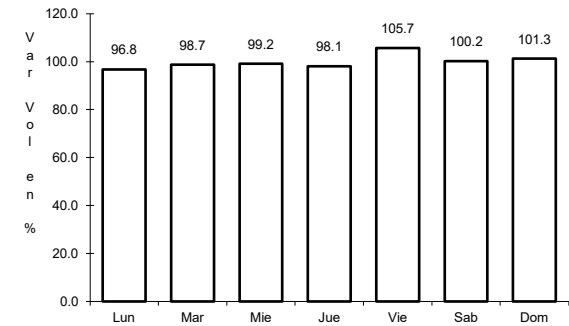
RUTA: MEX-140D



Km: 0.00 Tipo: 3 Sent: 0



Km: 25.80 Tipo: 3 Sent: 0

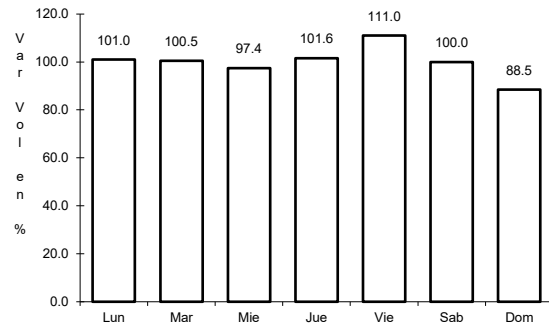


Km: 62.70 Tipo: 3 Sent: 0

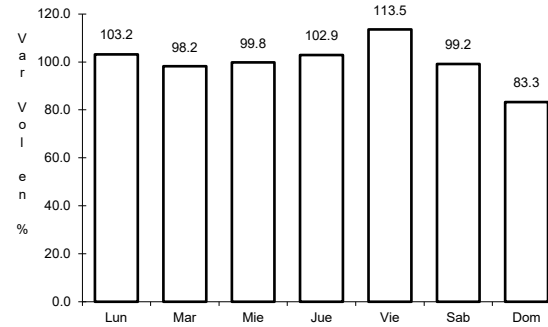
19 CARR: Libramiento de Tlaxcala (Cuota)

CLAVE:

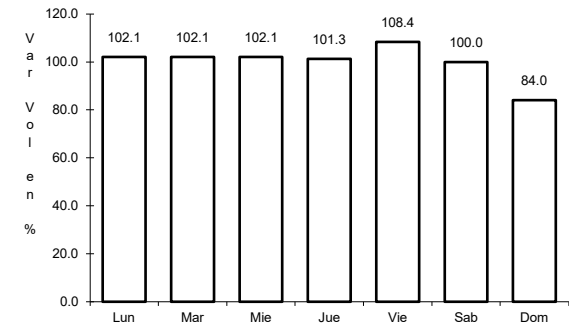
ruta: MEX-117D



Km: 0.00 Tipo: 3 Sent: 1



Km: 0.00 Tipo: 3 Sent: 2

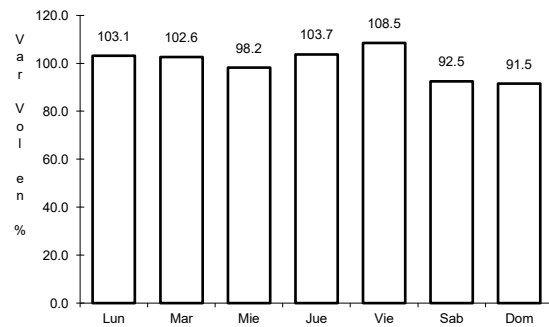


Km: 11.00 Tipo: 1 Sent: 1

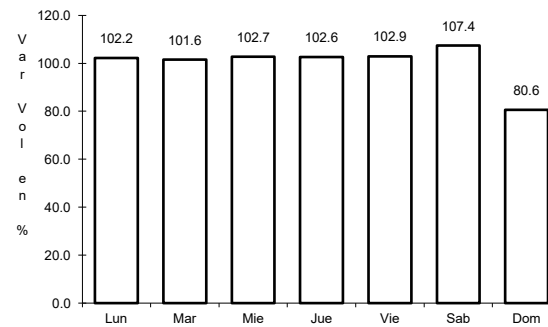
20 CARR: Libramiento Norte de la Ciudad de México (Cuota)

CLAVE: 0902

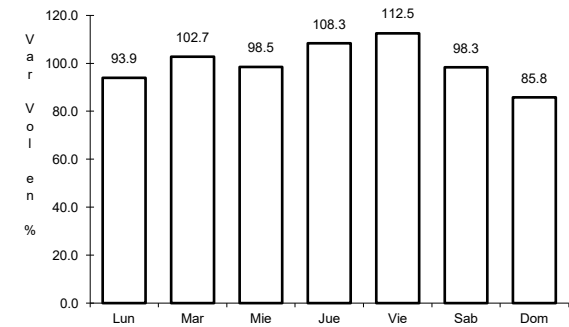
ruta: MEX-055D



Km: 12.90 Tipo: 1 Sent: 1



Km: 12.90 Tipo: 1 Sent: 2

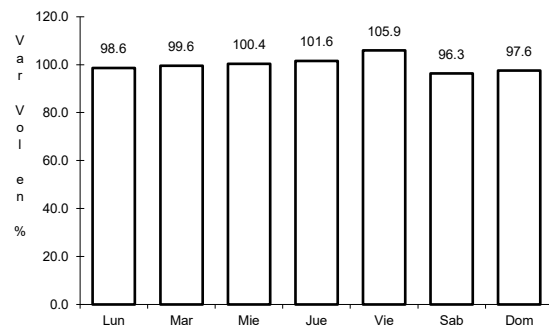


Km: 226.73 Tipo: 1 Sent: 1

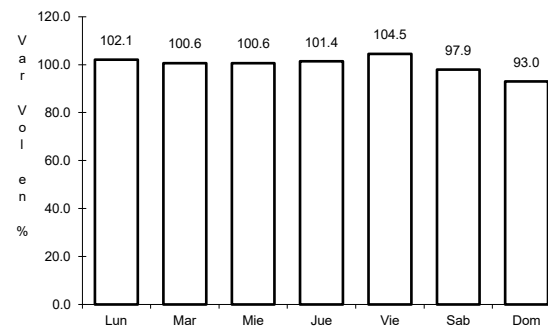
21 CARR: México - Puebla (Cuota)

CLAVE: 00450

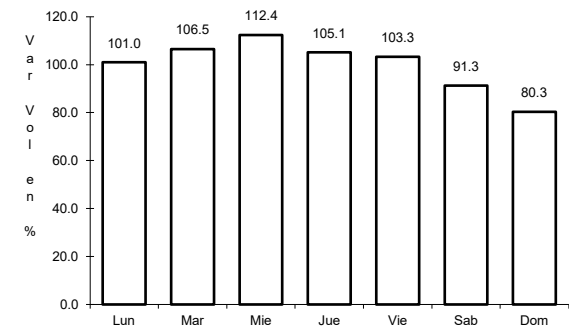
ruta: MEX-150D



Km: 17.00 Tipo: 3 Sent: 1



Km: 17.00 Tipo: 3 Sent: 2

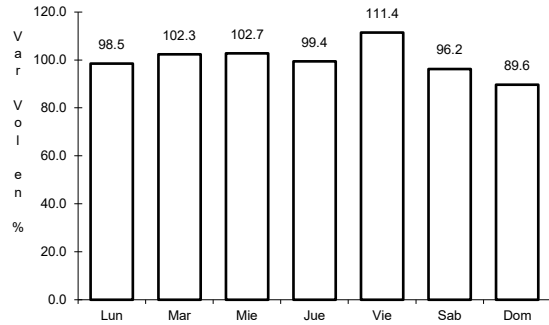


Km: 120.46 Tipo: 3 Sent: 1

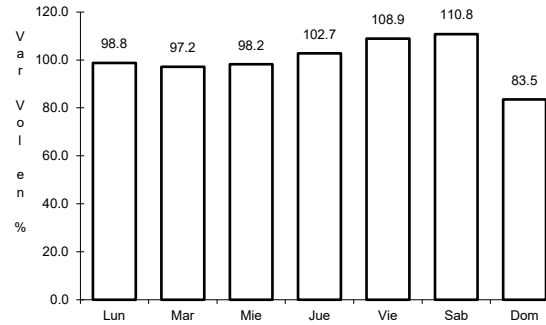
22 CARR: San Martin Texmelucan - Tlaxcala - El Molinito (Cuota)

CLAVE: 00212

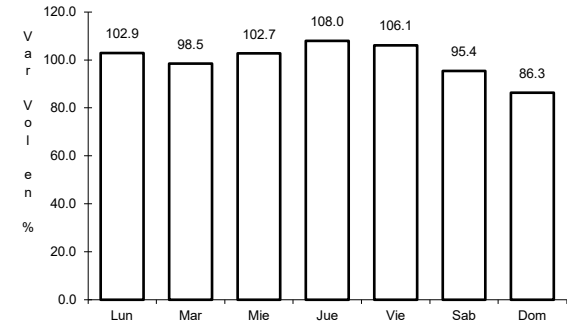
RUTA: MEX-117D



Km: 1.80 Tipo: 1 Sent: 1



Km: 35.20 Tipo: 1 Sent: 1

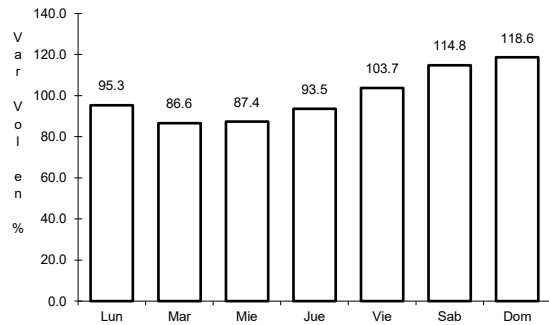


Km: 35.20 Tipo: 1 Sent: 2

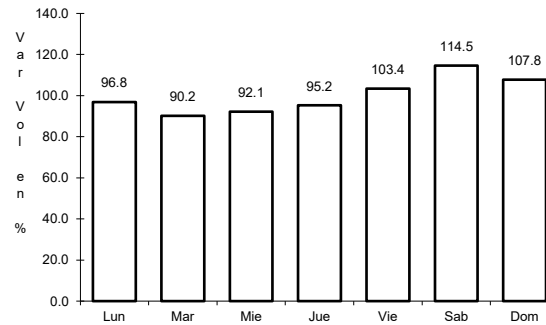
23 CARR: Tlaxco - Tejocotal (Cuota)

CLAVE: 00209

RUTA: MEX-119D



Km: 23.00 Tipo: 3 Sent: 0

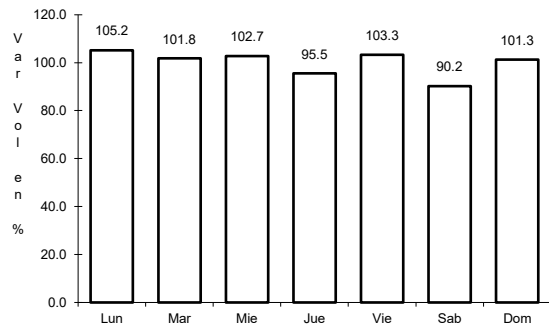


Km: 56.20 Tipo: 3 Sent: 0

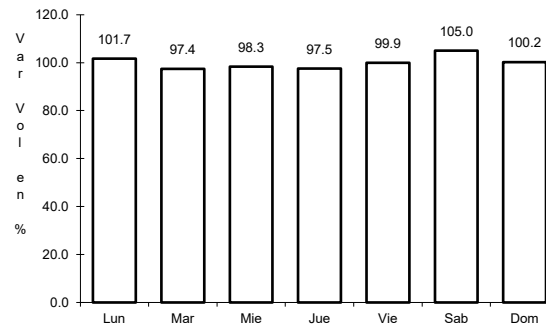
24 CARR: Ramal a Altzayanca de Hidalgo

CLAVE: 29562

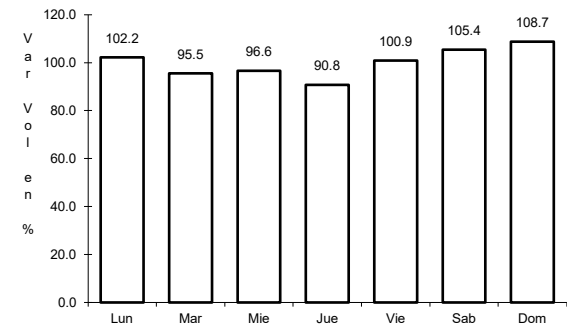
RUTA: TLAX



Km: 0.00 Tipo: 3 Sent: 0



Km: 6.50 Tipo: 3 Sent: 0

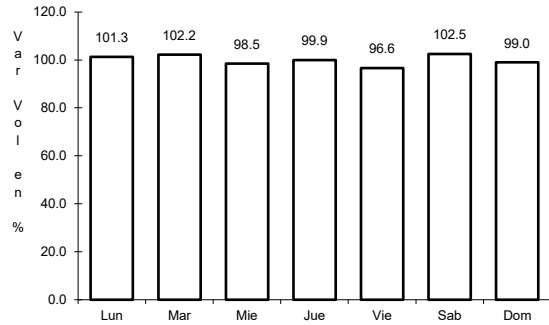


Km: 15.00 Tipo: 1 Sent: 0

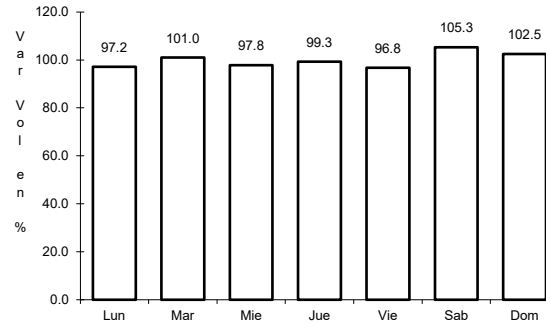
25 CARR: Ramal a San Pedro Ecatepec

CLAVE: 29561

ruta: TLAX



Km: 0.00 Tipo: 3 Sent: 0

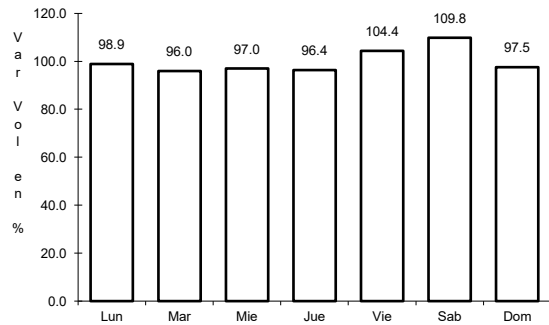


Km: 4.60 Tipo: 1 Sent: 0

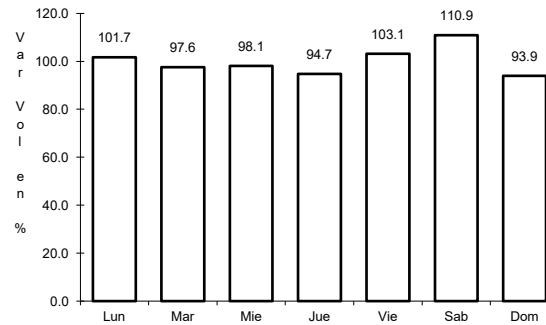
26 CARR: Ramal a Xalostoc

CLAVE: 29563

ruta: TLAX



Km: 0.00 Tipo: 3 Sent: 0

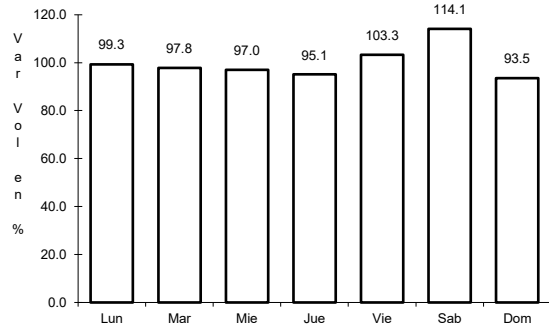


Km: 2.50 Tipo: 1 Sent: 0

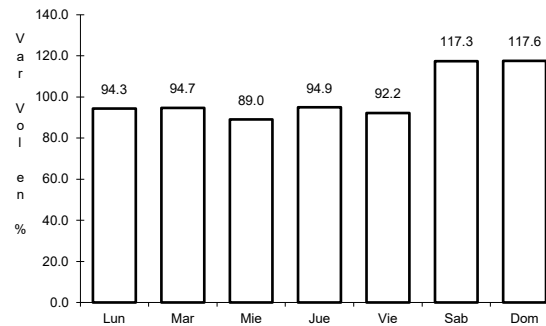
27 CARR: Xalostoc - Terrenate

CLAVE: 29390

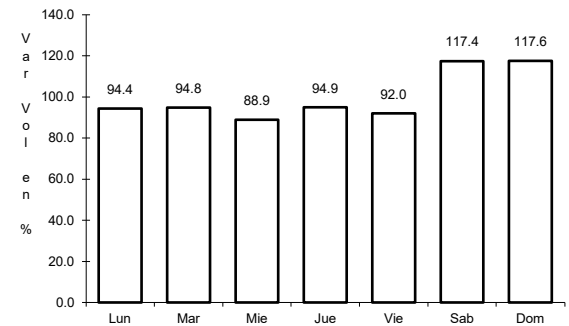
ruta: TLAX



Km: 0.00 Tipo: 3 Sent: 0



Km: 7.10 Tipo: 3 Sent: 0

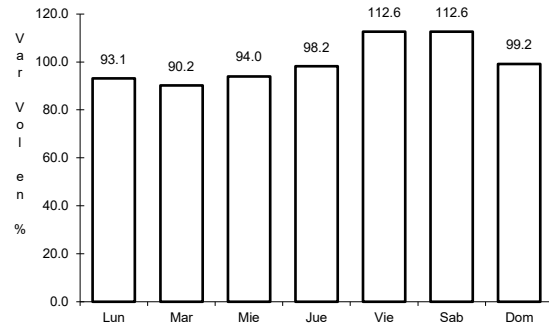


Km: 17.50 Tipo: 1 Sent: 0

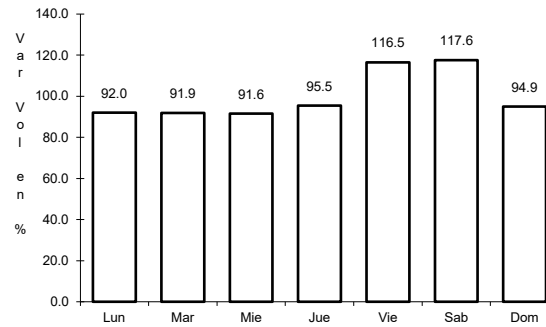
28 CARR: Puebla - Tlaxcala (Cuota)

CLAVE:

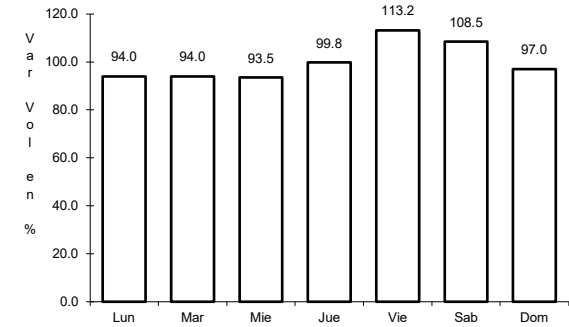
RUTA: PUE-D



Km: 0.00 Tipo: 3 Sent: 0



Km: 8.00 Tipo: 3 Sent: 0

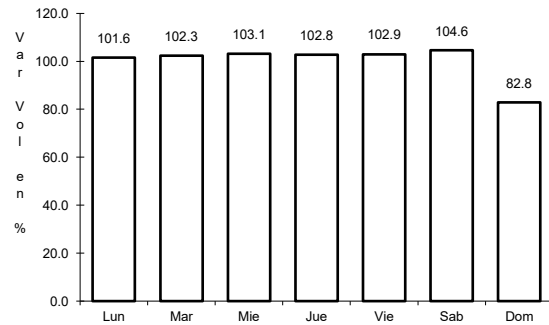


Km: 17.80 Tipo: 1 Sent: 0

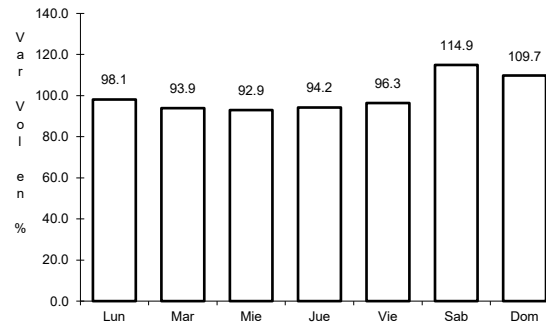
29 CARR: Acocotla - Vicente Guerrero

CLAVE: 29560

RUTA: MEX-TLAX



Km: 0.00 Tipo: 3 Sent: 0

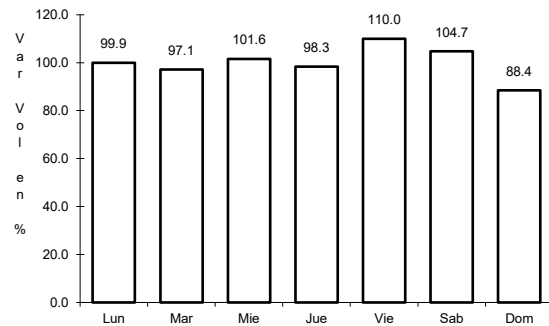


Km: 35.60 Tipo: 1 Sent: 0

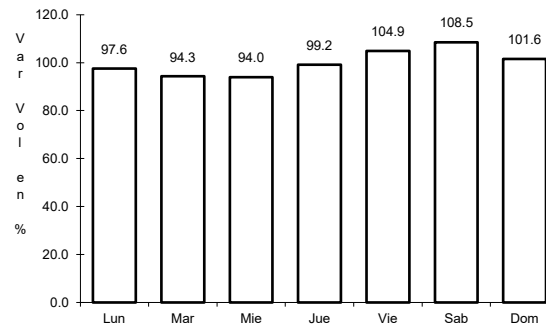
30 CARR: Apizaco - Emiliano Zapata

CLAVE: 29033

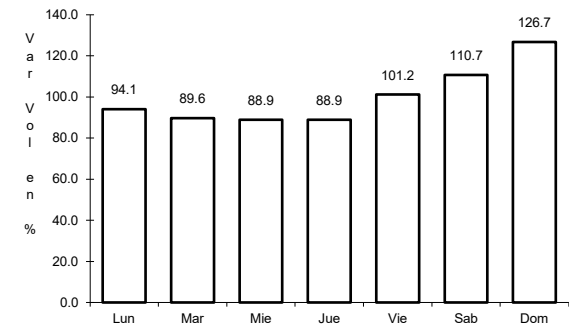
RUTA: TLAX-MEX-136



Km: 0.00 Tipo: 3 Sent: 0



Km: 16.00 Tipo: 1 Sent: 0

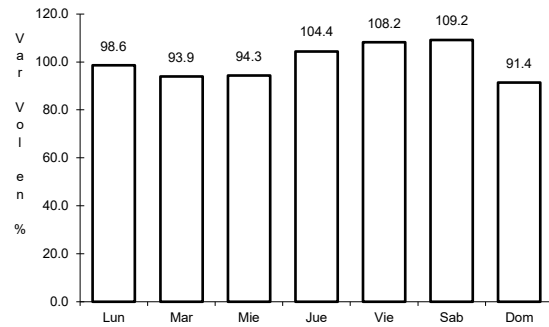


Km: 37.00 Tipo: 1 Sent: 0

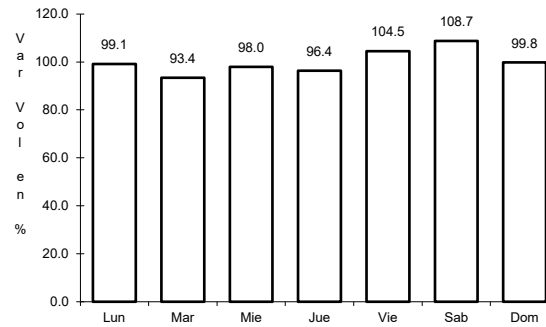
31 CARR: Calpulalpan - El Ocote

CLAVE: 00054

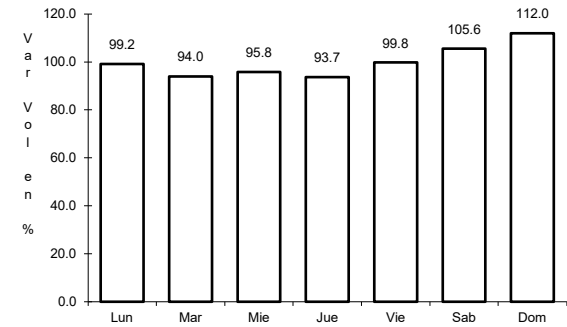
RUTA: MEX-HGO



Km: 0.00 Tipo: 3 Sent: 0



Km: 34.92 Tipo: 3 Sent: 0

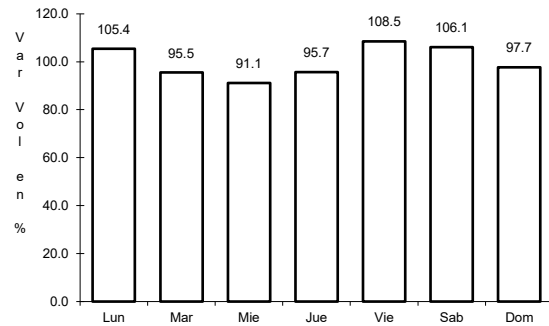


Km: 70.44 Tipo: 1 Sent: 1

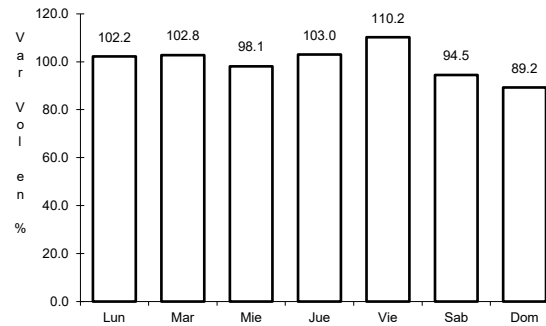
32 CARR: Calpulalpan - Nanacamilpa

CLAVE: 29034

RUTA: TLAX-MEX-136



Km: 0.00 Tipo: 3 Sent: 0



Km: 15.50 Tipo: 1 Sent: 0

