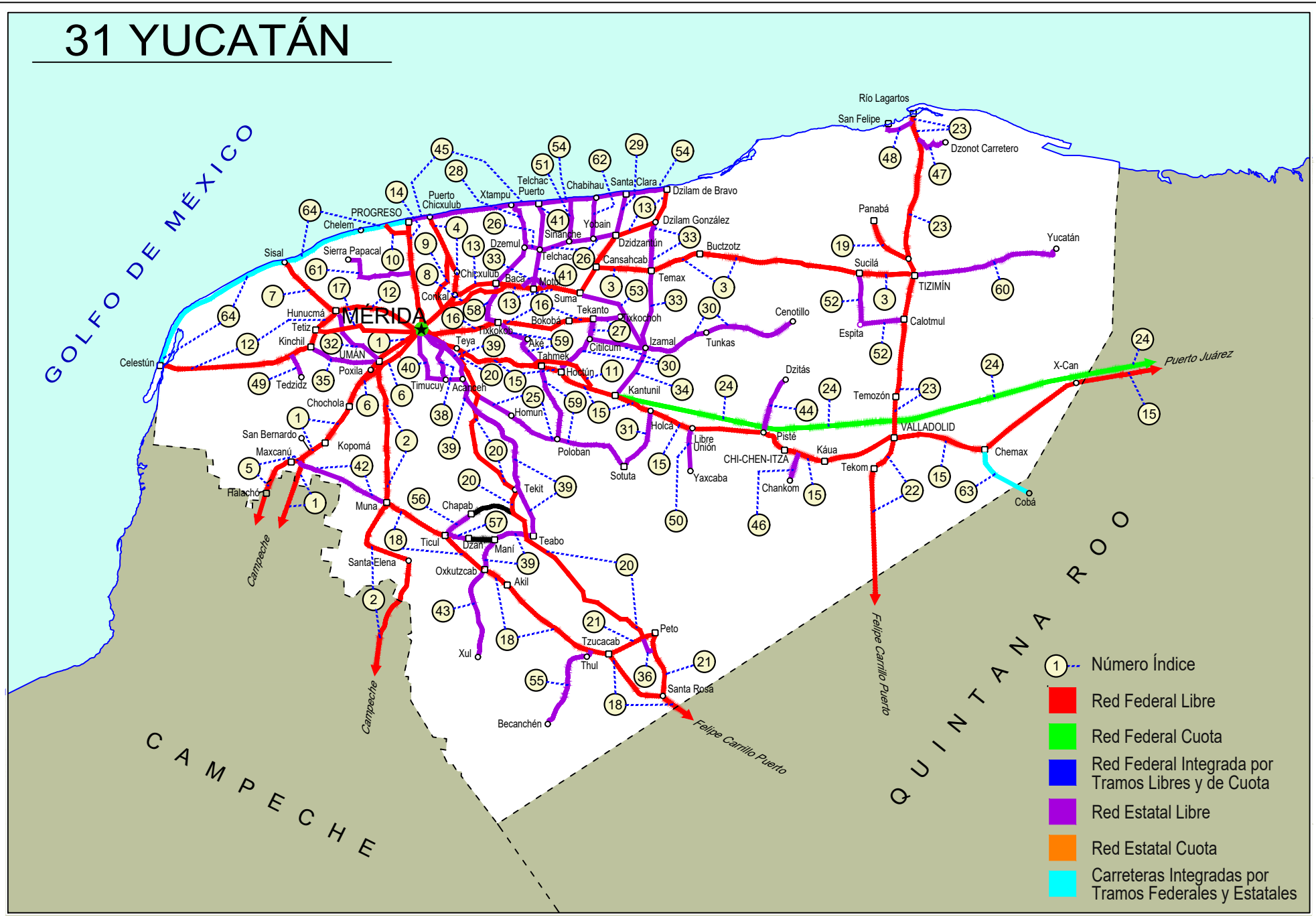




YUCATAN

NO. INDICE CARRETERA		RUTA
	---RED FEDERAL LIBRE---	
1	Campeche - Mérida	MEX-180
2	Campeche - Umán	MEX-261
3	Cansahcab - Tizimin	MEX-176
4	Conkal - Puerto Chicxulub	MEX-176
5	Dzitbalché - Ent. San Bernardo	MEX-180
6	Ent. Poxilá - Mérida	MEX-180
7	Hunucmá - Sisal	MEX-281
8	Libramiento Conkal - Mococho - Baca	MEX-176
9	Libramiento de Conkal	MEX
10	Libramiento de Progreso	MEX-261
11	Libramiento de Tahmek - Hoctun - Xocchel	MEX-180
12	Mérida - Celestún	MEX-281
13	Mérida - Dzilam de Bravo	MEX-176
14	Mérida - Progreso	MEX-261
15	Mérida - Puerto Juárez	MEX-180
16	Mérida - Tekanto	MEX-180
17	Mérida - Tetiz	MEX-281
18	Muna - Felipe Carrillo Puerto	MEX-184
19	Ramal a Panabá	MEX-295
20	Teya -Peto	MEX-184
21	Tzucacab - Santa Rosa	MEX
22	Valladolid - Felipe Carrillo Puerto	MEX-295
23	Valladolid - Río Lagartos	MEX-295
	---RED FEDERAL DE CUOTA---	
24	Mérida - Cancún (Cuota)	MEX-180D
	---RED ESTATAL LIBRE---	
25	Acanceh - Estación Polabán	YUC
26	Baca - Dzidzantún	YUC
27	Citilcum - Tixkochoh	YUC
28	Dzemul - Xtampú	YUC
29	Dzidzantún - Santa Clara	YUC
30	Hoctún - Cenotillo	YUC-011
31	Holcá - Sotuta	YUC
32	Hunucmá - Umán	YUC
33	Izamal - Dzilam González	YUC
34	Kantunil - Izamal	YUC
35	Kinchil - Umán	YUC
36	Libramiento de Peto	YUC-018
37	Libramiento Norte de Motul	YUC
38	Mérida - Acanceh	YUC
39	Mérida - Oxkutzcab	YUC-018
40	Mérida - Timucuy	YUC
41	Motul - Puerto Telchac	YUC-172
42	Muna - Maxcanú	YUC
43	Oxkutzcab - Xul	YUC-031
44	Piste - Dzitás	YUC-013
45	Progreso - Telchac Puerto	YUC-027
46	Ramal a Chankom	YUC
47	Ramal a Dzonot Carretero	YUC
48	Ramal a San Felipe	YUC
49	Ramal a Tedzidz	YUC
50	Ramal a Yaxcabá	YUC-289
51	Sinanché - Xitibcanul	YUC
52	Sucilá - Calotmul	YUC
53	Suma - Izamal	YUC-081
54	Telchac Puerto - Dzilam de Bravo	YUC
55	Thul - Becanchén	YUC-281
56	Ticul - Chapab	YUC
57	Ticul - Dzan	YUC
58	Tixkokob - Baca	YUC
59	Tixkokob - Sotuta	YUC
60	Tizimin - Yucatán	YUC
61	Yaxché - Sierra Papacal	YUC
62	Yobain - Chabihau	YUC
	---CARRETERAS INTEGRADAS POR TRAMOS FEDERALES Y ESTATALES---	
63	Chemax - Cobá	YUC-MEX-180
64	Progreso - Celestún	MEX-YUC

31 YUCATÁN



- ① Número Índice
- Red Federal Libre
- Red Federal Cuota
- Red Federal Integrada por Tramos Libres y de Cuota
- Red Estatal Libre
- Red Estatal Cuota
- Carreteras Integradas por Tramos Federales y Estatales

YUCATAN

1 CARR: Campeche - Mérida

CLAVE: 00066

RUTA: MEX-180

AÑO: 2023

LUGAR	ESTACION				CLASIFICACION VEHICULAR EN PORCIENTO														COORDENADAS	
	KM	TE	SC	TDPA	M	A	B	C2	C3	T3S2	T3S3	T3S2R4	OTROS	A	B	C	K'	D	LATITUD	LONGITUD
Campeche	0.00	3	1	4515	10.0	81.7	0.6	5.2	0.9	0.5	0.5	0.4	0.2	91.7	0.6	7.7	0.074	0.521	19.890251	-90.468067
Campeche	0.00	3	2	4144	10.0	81.8	0.6	5.1	1.0	0.4	0.6	0.4	0.1	91.8	0.6	7.6	0.071	0.521	19.890309	-90.468158
T. Der. Periferico Pablo García y Montilla (Libramiento De Campeche)	9.85	3	1	7553	5.0	74.2	2.9	6.2	1.8	5.4	1.3	2.9	0.3	79.2	2.9	17.9	0.068	0.509	19.897193	-90.454065
T. Der. Periferico Pablo García y Montilla (Libramiento De Campeche)	9.85	3	2	7844	5.0	74.1	3.0	6.2	1.7	5.4	1.3	2.9	0.4	79.1	3.0	17.9	0.063	0.509	19.897685	-90.453570
T. Der. Hampolol (2do Acceso)	20.00	1	1	6626	4.2	73.1	3.4	2.8	4.4	6.4	1.4	3.5	0.8	77.3	3.4	19.3	0.077	0.505	19.933483	-90.383421
T. Der. Hampolol (2do Acceso)	20.00	1	2	6497	4.1	73.2	3.2	2.8	4.0	7.4	1.4	3.0	0.9	77.3	3.2	19.5	0.082	0.505	19.933600	-90.383499
Acceso a Tenabo	38.30	1	1	6365	4.5	71.4	3.8	3.5	2.8	7.6	1.6	3.9	0.9	75.9	3.8	20.3	0.082	0.508	20.027120	-90.243520
Acceso a Tenabo	38.30	1	2	6161	4.5	71.4	3.8	3.5	2.8	7.6	1.6	3.9	0.9	75.9	3.8	20.3	0.077	0.508	20.027229	-90.243574
X. C. Chencoyi - Tenabo	39.50	1	1	5806	3.1	73.8	3.2	2.6	4.3	7.4	1.3	3.4	0.9	76.9	3.2	19.9	0.078	0.502	20.031070	-90.231314
X. C. Chencoyi - Tenabo	39.50	1	2	5763	3.1	73.9	3.2	2.6	4.2	7.4	1.3	3.4	0.9	77.0	3.2	19.8	0.079	0.502	20.031178	-90.231259
Tenabo	40.00	3	1	5929	3.1	72.8	4.9	3.2	2.1	6.2	2.4	4.4	0.9	75.9	4.9	19.2	0.082	0.511	20.055747	-90.213685
Tenabo	40.00	3	2	5669	3.1	72.5	4.9	3.2	2.2	6.2	2.6	4.5	0.8	75.6	4.9	19.5	0.075	0.511	20.055761	-90.213808
T. Lib de Pomuch Sur	50.80	1	1	6437	4.1	70.7	4.3	4.0	4.1	6.8	1.5	3.6	0.9	74.8	4.3	20.9	0.076	0.513	20.114891	-90.187409
T. Lib de Pomuch Sur	50.80	1	2	6122	4.3	69.7	4.4	4.5	4.2	6.7	1.4	3.9	0.9	74.0	4.4	21.6	0.100	0.513	20.114992	-90.187492
T. Lib de Pomuch Norte	54.80	3	1	6691	7.8	67.2	4.7	5.3	1.4	7.5	1.2	3.9	1.0	75.0	4.7	20.3	0.077	0.504	20.153480	-90.159808
T. Lib de Pomuch Norte	54.80	3	2	6584	7.6	70.2	3.8	2.8	1.8	8.0	1.0	3.8	1.0	77.8	3.8	18.4	0.068	0.504	20.153552	-90.159905
T. C. Acceso a Hecelchakan	57.60	3	1	5628	9.8	67.6	3.5	2.4	3.5	7.5	1.0	3.8	0.9	77.4	3.5	19.1	0.077	0.521	20.165896	-90.141643
T. C. Acceso a Hecelchakan	57.60	3	2	5173	10.4	64.5	3.5	3.0	3.8	8.9	1.3	3.7	0.9	74.9	3.5	21.6	0.077	0.521	20.165942	-90.141729
T. C. Hecelchakan - (T. C. Holpelchen - Bolonchen)	61.20	3	1	5547	4.5	71.1	2.9	4.7	2.6	8.1	1.5	3.7	0.9	75.6	2.9	21.5	0.077	0.504	20.190008	-90.118587
T. C. Hecelchakan - (T. C. Holpelchen - Bolonchen)	61.20	3	2	5461	3.8	74.2	2.5	3.0	2.5	8.1	1.4	3.6	0.9	78.0	2.5	19.5	0.071	0.504	20.190057	-90.118712
Poc Boc	69.00	3	1	5939	4.6	70.5	3.5	3.4	2.2	8.4	1.4	5.1	0.9	75.1	3.5	21.4	0.083	0.519	20.261480	-90.085559
Poc Boc	69.00	3	2	6404	4.6	70.7	3.4	3.4	2.1	8.4	1.4	5.1	0.9	75.3	3.4	21.3	0.070	0.519	20.261569	-90.085649
T. Izq. Dzitbalché	76.50	3	1	5135	4.9	69.4	3.9	3.2	2.1	9.2	2.1	4.3	0.9	74.3	3.9	21.8	0.099	0.501	20.309577	-90.053750
T. Izq. Dzitbalché	76.50	3	2	5115	4.2	71.1	3.9	2.9	1.9	9.0	1.9	4.2	0.9	75.3	3.9	20.8	0.073	0.501	20.309685	-90.053808
Calkiní	84.20	3	1	5674	4.6	70.4	3.5	3.4	2.2	8.4	1.5	5.1	0.9	75.0	3.5	21.5	0.066	0.502	20.376341	-90.039170
Calkiní	84.20	3	2	5729	4.6	70.3	3.5	3.4	2.3	8.4	1.5	5.1	0.9	74.9	3.5	21.6	0.071	0.502	20.376355	-90.039264
T. Der a Tepakán	86.60	3	1	4468	2.5	67.4	4.3	2.6	4.6	10.7	2.3	4.9	0.7	69.9	4.3	25.8	0.080	0.504	20.394395	-90.033577
T. Der a Tepakán	86.60	3	2	4545	2.4	67.7	4.4	2.6	4.5	10.6	2.5	4.7	0.6	70.1	4.4	25.5	0.077	0.504	20.394476	-90.033748
Lim. Edos. Term. Camp. Ppia. Yuc.	96.96																			
T. Der. Maxcanú	109.70	1	1	5547	3.2	69.1	4.7	3.1	1.9	10.1	2.0	5.0	0.9	72.3	4.7	23.0	0.075	0.534	20.560844	-89.980223
T. Der. Maxcanú	109.70	1	2	4846	3.1	68.8	4.7	3.1	2.1	10.1	2.1	5.1	0.9	71.9	4.7	23.4	0.083	0.534	20.560894	-89.980360
T. Der. Maxcanú	109.70	3	1	4666	2.2	70.8	3.9	3.3	1.8	10.2	1.7	5.2	0.9	73.0	3.9	23.1	0.080	0.508	20.596034	-89.970575
T. Der. Maxcanú	109.70	3	2	4824	2.3	70.7	4.0	3.3	1.8	10.2	1.8	5.1	0.8	73.0	4.0	23.0	0.064	0.508	20.596718	-89.970620
T. Der. Kopomá (1er Acceso)	119.50	1	1	6459	2.1	77.5	2.0	3.3	3.5	6.0	1.4	3.3	0.9	79.6	2.0	18.4	0.082	0.515	20.637483	-89.918222
T. Der. Kopomá (1er Acceso)	119.50	1	2	6081	2.0	77.0	2.1	3.0	3.6	6.4	1.4	3.6	0.9	79.0	2.1	18.9	0.104	0.515	20.637772	-89.917964

YUCATAN

1 CARR: Campeche - Mérida

CLAVE: 00066

RUTA: MEX-180

AÑO: 2023

LUGAR	ESTACION				CLASIFICACION VEHICULAR EN PORCIENTO														COORDENADAS	
	KM	TE	SC	TDPA	M	A	B	C2	C3	T3S2	T3S3	T3S2R4	OTROS	A	B	C	K'	D	LATITUD	LONGITUD
T. Der. Kopomá (2do Acceso)	121.50	1	1	6428	2.1	76.3	3.5	4.5	2.4	5.4	1.5	3.5	0.8	78.4	3.5	18.1	0.073	0.502	20.653856	-89.900490
T. Der. Kopomá (2do Acceso)	121.50	1	2	6481	2.0	77.0	3.6	4.1	2.3	5.5	1.3	3.5	0.7	79.0	3.6	17.4	0.096	0.502	20.653930	-89.900634
T. Der. Kopomá (2do Acceso)	121.50	3	1	6606	3.7	74.3	3.2	3.6	2.2	7.1	1.5	3.5	0.9	78.0	3.2	18.8	0.081	0.502	20.663314	-89.890129
T. Der. Kopomá (2do Acceso)	121.50	3	2	6544	3.4	74.1	3.5	3.9	2.2	7.0	1.4	3.6	0.9	77.5	3.5	19.0	0.102	0.502	20.663380	-89.890237
T. Izq. Chocolá (1er Acceso)	133.00	1	1	5979	2.2	76.3	3.2	3.8	2.0	6.2	1.7	3.7	0.9	78.5	3.2	18.3	0.101	0.540	20.726447	-89.842973
T. Izq. Chocolá (1er Acceso)	133.00	1	2	6316	2.4	75.3	2.9	4.2	2.4	6.6	1.4	3.9	0.9	77.7	2.9	19.4	0.111	0.540	20.726507	-89.843092
T. Izq. Chocolá (1er Acceso)	133.00	3	1	5930	3.5	71.6	3.0	6.5	2.0	6.5	1.5	4.5	0.9	75.1	3.0	21.9	0.074	0.501	20.742920	-89.830234
T. Izq. Chocolá (1er Acceso)	133.00	3	2	5902	3.5	71.4	3.0	6.5	2.0	6.5	1.6	4.6	0.9	74.9	3.0	22.1	0.092	0.501	20.742929	-89.830468
T. Izq. Chocolá (2do Acceso)	135.60	3	1	7547	3.6	71.4	3.0	6.5	2.0	6.4	1.4	4.9	0.8	75.0	3.0	22.0	0.082	0.503	20.764904	-89.825036
T. Izq. Chocolá (2do Acceso)	135.60	3	2	7452	3.7	71.3	3.5	6.5	2.0	6.0	1.5	4.7	0.8	75.0	3.5	21.5	0.094	0.503	20.765128	-89.825088
T. Izq. Umán	139.50	3	1	7023	3.2	71.9	3.5	5.4	2.2	7.6	1.7	3.6	0.9	75.1	3.5	21.4	0.092	0.504	20.802175	-89.804941
T. Izq. Umán	139.50	3	2	6907	3.4	72.5	3.3	5.2	1.9	7.9	1.5	3.4	0.9	75.9	3.3	20.8	0.093	0.504	20.802261	-89.805115
X. C. Campeche - Umán	149.00	1	1	7414	2.5	73.9	2.4	5.1	2.9	7.0	2.0	3.4	0.8	76.4	2.4	21.2	0.080	0.506	20.836207	-89.754845
X. C. Campeche - Umán	149.00	1	2	7590	2.7	72.7	2.4	5.3	3.1	7.3	2.0	3.6	0.9	75.4	2.4	22.2	0.093	0.506	20.836391	-89.754871
T. C. Periférico de Mérida	159.00	1	1	10148	4.2	71.6	2.9	3.2	4.4	7.0	2.6	3.3	0.8	75.8	2.9	21.3	0.081	0.511	20.897555	-89.685126
T. C. Periférico de Mérida	159.00	1	2	10620	4.4	71.8	2.9	3.2	4.3	6.8	2.8	3.1	0.7	76.2	2.9	20.9	0.086	0.511	20.897705	-89.685237

2 CARR: Campeche - Umán

CLAVE: 00164

RUTA: MEX-261

AÑO: 2023

LUGAR	ESTACION				CLASIFICACION VEHICULAR EN PORCIENTO														COORDENADAS	
	KM	TE	SC	TDPA	M	A	B	C2	C3	T3S2	T3S3	T3S2R4	OTROS	A	B	C	K'	D	LATITUD	LONGITUD
Campeche	0.00																			
T. Der. Periférico Pablo García y Montilla (Libramiento De Campeche)	7.00	1	0	5182	12.8	81.5	0.7	3.0	1.1	0.6	0.2	0.1	0.0	94.3	0.7	5.0	0.101	0.520	19.849221	-90.473557
T. Der. Periférico Pablo García y Montilla (Libramiento De Campeche)	7.00	3	0	2866	13.4	82.2	0.4	2.8	0.6	0.4	0.1	0.1	0.0	95.6	0.4	4.0	0.085	0.502	19.848319	-90.452638
T. Izq. Tenabo	30.88	1	0	1619	11.8	78.5	0.7	5.7	0.7	1.0	0.7	0.5	0.4	90.3	0.7	9.0	0.100	0.506	19.805106	-90.283146
T. Izq. Tenabo	30.88	3	0	1979	10.7	76.0	1.0	7.7	1.7	1.4	0.7	0.6	0.2	86.7	1.0	12.3	0.092	0.512	19.804507	-90.272821
T. Der. Edzna	44.51	1	0	1614	11.2	74.8	1.6	8.8	0.6	1.8	0.5	0.5	0.2	86.0	1.6	12.4	0.095	0.526	19.743505	-90.178946
T. Der. Edzna	44.51	3	0	1667	13.8	76.3	0.8	4.4	2.0	1.5	0.5	0.5	0.2	90.1	0.8	9.1	0.096	0.503	19.745162	-90.171029
Hopelchén	84.88	1	0	2437	11.9	76.0	0.9	7.5	1.1	1.5	0.4	0.3	0.4	87.9	0.9	11.2	0.086	0.509	19.754128	-89.854641
Bolonchén de Rejón	117.88	3	0	1125	20.7	66.1	2.4	5.2	1.6	2.1	0.9	0.9	0.1	86.8	2.4	10.8	0.108	0.508	20.012770	-89.733977
Lim. Edos. Term. Camp. Ppia. Yuc.	126.88																			
T. Der. Sayil	140.88	1	0	636	7.5	70.4	2.2	13.1	2.1	1.6	1.2	1.6	0.3	77.9	2.2	19.9	0.106	0.503	20.208263	-89.670568
Santa Elena	158.88	1	0	1111	26.3	59.8	1.5	6.5	2.9	1.3	0.7	0.9	0.1	86.1	1.5	12.4	0.142	0.508	20.319316	-89.643330
T. Izq. Ruinas de Uxmal	172.48	1	0	786	16.9	66.1	1.5	7.5	2.4	2.0	0.8	2.7	0.1	83.0	1.5	15.5	0.116	0.504	20.361886	-89.763684
Muna	187.43	1	0	1468	18.1	73.8	1.0	3.6	1.2	1.0	0.5	0.6	0.2	91.9	1.0	7.1	0.125	0.525	20.460364	-89.725498

YUCATAN

2 CARR: Campeche - Umán

CLAVE: 00164

RUTA: MEX-261

AÑO: 2023

LUGAR	ESTACION				CLASIFICACION VEHICULAR EN PORCIENTO														COORDENADAS	
	KM	TE	SC	TDPA	M	A	B	C2	C3	T3S2	T3S3	T3S2R4	OTROS	A	B	C	K'	D	LATITUD	LONGITUD
Muna	187.43	3	0	4090	4.9	84.2	1.1	5.0	1.5	2.2	0.4	0.6	0.1	89.1	1.1	9.8	0.091	0.528	20.511430	-89.709227
Xtepén	225.38	1	0	5363	2.3	81.7	1.0	8.8	1.5	1.8	1.7	1.0	0.2	84.0	1.0	15.0	0.098	0.502	20.803101	-89.733868
Umán	230.83	1	0	4376	17.0	65.0	1.5	5.6	4.2	4.8	1.1	0.6	0.2	82.0	1.5	16.5	0.098	0.512	20.866605	-89.746069

3 CARR: Cansahcab - Tizimin

CLAVE: 31014

RUTA: MEX-176

AÑO: 2023

LUGAR	ESTACION				CLASIFICACION VEHICULAR EN PORCIENTO														COORDENADAS	
	KM	TE	SC	TDPA	M	A	B	C2	C3	T3S2	T3S3	T3S2R4	OTROS	A	B	C	K'	D	LATITUD	LONGITUD
Cansahcab	0.00	3	0	4173	4.4	82.3	1.3	4.0	2.1	2.8	1.3	1.5	0.3	86.7	1.3	12.0	0.077	0.520	21.156829	-89.077022
Temax	16.73	3	0	3845	3.3	81.4	1.8	4.0	2.5	3.5	1.4	1.8	0.3	84.7	1.8	13.5	0.070	0.536	21.155511	-88.915910
Buctzotz	32.92	3	0	3150	18.0	68.3	2.4	4.1	1.7	2.8	0.6	1.8	0.3	86.3	2.4	11.3	0.077	0.506	21.199572	-88.773657
Tizimin	99.14	1	0	4680	10.1	75.8	3.0	3.1	1.8	3.0	1.1	1.8	0.3	85.9	3.0	11.1	0.075	0.506	21.150117	-88.187426

4 CARR: Conkal - Puerto Chicxulub

CLAVE: 31004

RUTA: MEX-176

AÑO: 2023

LUGAR	ESTACION				CLASIFICACION VEHICULAR EN PORCIENTO														COORDENADAS	
	KM	TE	SC	TDPA	M	A	B	C2	C3	T3S2	T3S3	T3S2R4	OTROS	A	B	C	K'	D	LATITUD	LONGITUD
Conkal	0.00	3	0	3418	36.4	53.8	0.7	4.1	1.2	2.4	0.7	0.3	0.4	90.2	0.7	9.1	0.068	0.508	21.083467	-89.520031
Puerto Chicxulub	27.00	1	0	2752	33.2	58.8	0.6	3.5	1.0	2.0	0.3	0.2	0.4	92.0	0.6	7.4	0.083	0.504	21.286233	-89.601155

5 CARR: Dzitbalché - Ent. San Bernardo

CLAVE: 00162

RUTA: MEX-180

AÑO: 2023

LUGAR	ESTACION				CLASIFICACION VEHICULAR EN PORCIENTO														COORDENADAS	
	KM	TE	SC	TDPA	M	A	B	C2	C3	T3S2	T3S3	T3S2R4	OTROS	A	B	C	K'	D	LATITUD	LONGITUD
T. C. Campeche - Mérida	0.00																			
T. Izq. Libramiento de Becal (1º Acceso)	12.33	1	0	3791	23.2	71.2	1.2	2.3	1.2	0.6	0.1	0.2	0.0	94.4	1.2	4.4	0.079	0.504	20.418448	-90.034101
T. Izq. Libramiento de Becal (2º Acceso)	15.41	3	0	1751	16.7	74.9	1.8	3.5	0.8	1.7	0.5	0.0	0.1	91.6	1.8	6.6	0.087	0.511	20.449624	-90.038827
Lim. Edos. Term. Camp. Ppia. Yuc.	15.80																			
Halachó	21.08	1	0	2291	23.1	62.1	4.1	8.2	1.0	1.4	0.1	0.0	0.0	85.2	4.1	10.7	0.081	0.506	20.469161	-90.066364
T. Izq. Libramiento de Maxcanú (1º Acceso)	35.60	1	0	2964	26.1	62.9	2.9	5.4	1.0	1.5	0.2	0.0	0.0	89.0	2.9	8.1	0.082	0.500	20.577258	-90.035478
T. Der. Muna	40.36	3	0	4427	9.1	79.9	2.2	6.0	1.3	1.3	0.2	0.0	0.0	89.0	2.2	8.8	0.083	0.503	20.601414	-89.975978
Ent. San Bernardo	41.53																			

YUCATAN

6 CARR: Ent. Poxilá - Mérida

CLAVE: 31003

RUTA: MEX-180

AÑO: 2023

LUGAR	ESTACION				CLASIFICACION VEHICULAR EN PORCIENTO													COORDENADAS		
	KM	TE	SC	TDPA	M	A	B	C2	C3	T3S2	T3S3	T3S2R4	OTROS	A	B	C	K'	D	LATITUD	LONGITUD
T. C. Campeche - Mérida	0.00																			
Umán	9.46	1	0	3209	23.8	61.5	1.8	5.8	3.5	2.9	0.3	0.3	0.1	85.3	1.8	12.9	0.095	0.500	20.866538	-89.757782
X. Periférico de Mérida	16.37	1	1	18147	11.3	75.4	1.9	4.2	3.0	2.2	0.7	1.0	0.3	86.7	1.9	11.4	0.086	0.509	20.920613	-89.696428
X. Periférico de Mérida	16.37	1	2	18826	11.4	75.5	1.8	4.4	2.8	2.4	0.6	0.9	0.2	86.9	1.8	11.3	0.088	0.509	20.920706	-89.696467
Mérida	25.70	1	1	25134	11.2	77.5	1.3	4.9	1.7	1.4	0.6	1.1	0.3	88.7	1.3	10.0	0.085	0.521	20.926810	-89.684135
Mérida	25.70	1	2	23074	11.4	76.6	1.1	5.1	1.9	1.6	0.6	1.4	0.3	88.0	1.1	10.9	0.074	0.521	20.927068	-89.684216

7 CARR: Hunucmá - Sisal

CLAVE: 31021

RUTA: MEX-281

AÑO: 2023

LUGAR	ESTACION				CLASIFICACION VEHICULAR EN PORCIENTO													COORDENADAS		
	KM	TE	SC	TDPA	M	A	B	C2	C3	T3S2	T3S3	T3S2R4	OTROS	A	B	C	K'	D	LATITUD	LONGITUD
Hunucmá	0.00	3	0	1816	14.9	78.3	0.7	4.0	1.0	0.8	0.1	0.2	0.0	93.2	0.7	6.1	0.177	0.512	21.030344	-89.896579
Sisal	23.20	1	0	1624	14.7	78.8	0.7	4.0	1.0	0.5	0.2	0.1	0.0	93.5	0.7	5.8	0.184	0.504	21.162262	-90.030715

8 CARR: Libramiento Conkal - Mococho - Baca

CLAVE:

RUTA: MEX-176

AÑO: 2023

LUGAR	ESTACION				CLASIFICACION VEHICULAR EN PORCIENTO													COORDENADAS		
	KM	TE	SC	TDPA	M	A	B	C2	C3	T3S2	T3S3	T3S2R4	OTROS	A	B	C	K'	D	LATITUD	LONGITUD
T. C. Mérida - Dzilam de Bravo (Oeste)	4.40	3	1	9172	6.5	85.7	0.9	2.4	1.8	1.2	0.4	0.7	0.4	92.2	0.9	6.9	0.090	0.514	21.053568	-89.530237
T. C. Mérida - Dzilam de Bravo (Oeste)	4.40	3	2	8676	6.1	86.1	0.7	2.7	1.8	1.3	0.4	0.7	0.2	92.2	0.7	7.1	0.113	0.514	21.053648	-89.530264
X. C. Conkal - Yaxkukul	8.74	3	1	7458	7.0	85.1	1.2	2.7	1.5	1.4	0.4	0.6	0.1	92.1	1.2	6.7	0.099	0.505	21.066366	-89.497206
X. C. Conkal - Yaxkukul	8.74	3	2	7605	7.0	85.0	1.3	2.7	1.5	1.4	0.4	0.6	0.1	92.0	1.3	6.7	0.110	0.505	21.066428	-89.497315
X. C. Tixkokob - Baca	20.86	1	1	6572	6.6	85.5	1.1	2.9	1.5	1.2	0.5	0.6	0.1	92.1	1.1	6.8	0.110	0.500	21.099719	-89.403377
X. C. Tixkokob - Baca	20.86	1	2	6581	6.4	85.2	1.3	3.0	1.6	1.3	0.5	0.6	0.1	91.6	1.3	7.1	0.111	0.500	21.099800	-89.403367
T. C. Mérida - Dzilam de Bravo (Este)	24.41	1	1	5934	9.0	84.6	0.6	2.3	1.4	0.9	0.5	0.6	0.1	93.6	0.6	5.8	0.120	0.508	21.103252	-89.370080
T. C. Mérida - Dzilam de Bravo (Este)	24.41	1	2	5758	9.0	84.0	0.7	2.6	1.4	1.1	0.5	0.6	0.1	93.0	0.7	6.3	0.120	0.508	21.103338	-89.370157

9 CARR: Libramiento de Conkal

CLAVE:

RUTA: MEX

AÑO: 2023

LUGAR	ESTACION				CLASIFICACION VEHICULAR EN PORCIENTO													COORDENADAS		
	KM	TE	SC	TDPA	M	A	B	C2	C3	T3S2	T3S3	T3S2R4	OTROS	A	B	C	K'	D	LATITUD	LONGITUD
T. C. Mérida - Dzilam de Bravo	0.00	3	0	12148	7.2	83.0	1.0	5.0	1.2	0.9	0.7	0.6	0.4	90.2	1.0	8.8	0.075	0.543	21.054895	-89.546898
X. C. Conkal - Chablekal	4.80																			
T. C. Conkal - Puerto Chicxulub	14.00	1	0	2091	5.8	75.6	2.5	5.5	2.7	2.2	2.5	2.4	0.8	81.4	2.5	16.1	0.083	0.504	21.151821	-89.531328

YUCATAN

10 CARR: Libramiento de Progreso

CLAVE: 31631

RUTA: MEX-261

AÑO: 2023

LUGAR	ESTACION				CLASIFICACION VEHICULAR EN PORCIENTO										COORDENADAS					
	KM	TE	SC	TDPA	M	A	B	C2	C3	T3S2	T3S3	T3S2R4	OTROS	A	B	C	K'	D	LATITUD	LONGITUD
T. C. Mérida - Progreso	0.00	3	0	3402	6.8	81.8	0.7	5.9	1.7	2.0	0.6	0.3	0.2	88.6	0.7	10.7	0.087	0.516	21.258031	-89.666349
Yucalpetén	6.50	1	0	3671	6.4	84.9	0.7	4.9	0.9	1.1	0.5	0.4	0.2	91.3	0.7	8.0	0.083	0.505	21.271248	-89.712346

11 CARR: Libramiento de Tahmek - Hoctun - Xocchel

CLAVE:

RUTA: MEX-180

AÑO: 2023

LUGAR	ESTACION				CLASIFICACION VEHICULAR EN PORCIENTO										COORDENADAS					
	KM	TE	SC	TDPA	M	A	B	C2	C3	T3S2	T3S3	T3S2R4	OTROS	A	B	C	K'	D	LATITUD	LONGITUD
T. C. Mérida - Puerto Juárez	14.00																			
Tahmek	42.00	3	1	6140	3.9	77.5	2.6	3.1	2.5	4.6	1.5	3.4	0.9	81.4	2.6	16.0	0.081	0.502	20.883127	-89.241097
Tahmek	42.00	3	2	6200	3.9	77.6	2.6	3.1	2.5	4.6	1.5	3.4	0.8	81.5	2.6	15.9	0.095	0.502	20.883246	-89.241064
X. C. Hoctún - Cenotillo	48.30	3	1	4533	2.5	77.4	2.6	3.7	2.5	4.8	1.4	4.2	0.9	79.9	2.6	17.5	0.073	0.501	20.869254	-89.188135
X. C. Hoctún - Cenotillo	48.30	3	2	4557	2.5	77.2	2.7	3.7	2.5	4.7	1.5	4.3	0.9	79.7	2.7	17.6	0.092	0.501	20.869339	-89.188038

12 CARR: Mérida - Celestún

CLAVE: 31025

RUTA: MEX-281

AÑO: 2023

LUGAR	ESTACION				CLASIFICACION VEHICULAR EN PORCIENTO										COORDENADAS					
	KM	TE	SC	TDPA	M	A	B	C2	C3	T3S2	T3S3	T3S2R4	OTROS	A	B	C	K'	D	LATITUD	LONGITUD
Mérida	0.00	3	1	17539	8.6	84.8	0.8	4.1	0.7	0.4	0.1	0.3	0.2	93.4	0.8	5.8	0.083	0.515	20.986812	-89.659040
Mérida	0.00	3	2	16540	8.4	84.7	0.8	4.3	0.7	0.5	0.1	0.3	0.2	93.1	0.8	6.1	0.086	0.515	20.986704	-89.659105
X. Periférico de Mérida	5.10	1	1	21587	8.9	86.0	0.5	2.6	0.6	0.4	0.1	0.7	0.2	94.9	0.5	4.6	0.077	0.502	20.992846	-89.668766
X. Periférico de Mérida	5.10	1	2	21420	8.9	85.8	0.5	2.8	0.6	0.4	0.1	0.7	0.2	94.7	0.5	4.8	0.067	0.502	20.992755	-89.668831
X. Periférico de Mérida	5.10	3	1	29047	5.5	89.9	0.6	2.5	0.3	0.4	0.5	0.2	0.1	95.4	0.6	4.0	0.084	0.517	20.999701	-89.679789
X. Periférico de Mérida	5.10	3	2	26921	5.7	89.9	0.6	2.3	0.3	0.4	0.5	0.2	0.1	95.6	0.6	3.8	0.087	0.517	20.999606	-89.679863
Ucú	14.80	1	0	4899	15.8	71.0	1.1	9.3	0.9	1.6	0.1	0.1	0.1	86.8	1.1	12.1	0.068	0.504	21.027767	-89.735418
Hunucmá	26.00	1	0	2600	15.7	66.5	1.4	13.3	0.4	2.0	0.4	0.2	0.1	82.2	1.4	16.4	0.084	0.504	21.027518	-89.850120
Hunucmá	26.00	3	0	2765	30.5	54.5	1.6	10.1	0.4	2.5	0.2	0.1	0.1	85.0	1.6	13.4	0.078	0.515	21.002470	-89.886258
Kinchil	40.00	3	0	2090	10.6	73.7	1.0	8.6	3.7	1.7	0.7	0.0	0.0	84.3	1.0	14.7	0.085	0.519	20.911460	-89.964218
T. Izq. San Mateo	67.00	1	0	1421	2.4	88.6	1.1	6.7	0.7	0.2	0.1	0.1	0.1	91.0	1.1	7.9	0.122	0.511	20.859851	-90.187062
Celestún	89.00	1	0	1345	13.7	72.8	2.2	8.0	1.5	1.4	0.2	0.1	0.1	86.5	2.2	11.3	0.128	0.502	20.857438	-90.380365

13 CARR: Mérida - Dzilam de Bravo

CLAVE: 31001

RUTA: MEX-176

AÑO: 2023

LUGAR	ESTACION				CLASIFICACION VEHICULAR EN PORCIENTO										COORDENADAS					
	KM	TE	SC	TDPA	M	A	B	C2	C3	T3S2	T3S3	T3S2R4	OTROS	A	B	C	K'	D	LATITUD	LONGITUD
Mérida	0.00																			

YUCATAN

13 CARR: Mérida - Dzilam de Bravo

CLAVE: 31001

RUTA: MEX-176

AÑO: 2023

LUGAR	ESTACION				CLASIFICACION VEHICULAR EN PORCIENTO										COORDENADAS					
	KM	TE	SC	TDPA	M	A	B	C2	C3	T3S2	T3S3	T3S2R4	OTROS	A	B	C	K'	D	LATITUD	LONGITUD
X. Periférico de Mérida	5.90	1	1	12183	6.6	89.6	0.4	1.7	0.4	0.4	0.2	0.4	0.3	96.2	0.4	3.4	0.072	0.505	21.020118	-89.567776
X. Periférico de Mérida	5.90	1	2	12428	6.7	89.4	0.3	1.8	0.5	0.4	0.2	0.4	0.3	96.1	0.3	3.6	0.079	0.505	21.020216	-89.567828
X. Periférico de Mérida	5.90	3	1	20230	6.0	87.0	1.5	2.5	0.9	1.1	0.3	0.5	0.2	93.0	1.5	5.5	0.071	0.508	21.037949	-89.550376
X. Periférico de Mérida	5.90	3	2	19624	6.1	86.9	1.4	2.4	1.0	1.3	0.2	0.5	0.2	93.0	1.4	5.6	0.077	0.508	21.037991	-89.550466
Conkal	18.00	1	1	17187	8.9	85.3	0.6	2.0	1.2	1.0	0.3	0.5	0.2	94.2	0.6	5.2	0.089	0.503	21.050617	-89.537917
Conkal	18.00	1	2	16970	8.8	85.6	0.4	1.7	1.4	1.1	0.3	0.5	0.2	94.4	0.4	5.2	0.106	0.503	21.050410	-89.538362
Baca	34.40	1	0	2776	36.8	52.7	0.6	6.5	0.6	1.9	0.6	0.2	0.1	89.5	0.6	9.9	0.077	0.507	21.109061	-89.408374
Motul	44.00	1	1	7517	12.7	76.4	0.6	6.6	1.1	1.4	0.5	0.6	0.1	89.1	0.6	10.3	0.094	0.505	21.097850	-89.316208
Motul	44.00	1	2	7681	12.8	75.3	0.7	7.4	1.1	1.5	0.5	0.6	0.1	88.1	0.7	11.2	0.103	0.505	21.097931	-89.315782
Motul	44.00	3	0	5472	6.7	82.7	1.1	3.3	1.9	2.3	0.6	1.2	0.2	89.4	1.1	9.5	0.074	0.506	21.115729	-89.270931
Cansahcab	68.00	3	0	1871	24.0	72.8	0.5	1.7	0.7	0.1	0.1	0.1	0.0	96.8	0.5	2.7	0.087	0.503	21.165110	-89.100826
Dzidzantún	80.00	1	0	2142	21.5	72.8	0.4	4.2	0.8	0.2	0.0	0.1	0.0	94.3	0.4	5.3	0.076	0.501	21.235525	-89.051601
Dzilam de Bravo	105.00	1	0	2836	52.9	38.7	0.4	4.9	0.4	1.8	0.4	0.2	0.3	91.6	0.4	8.0	0.071	0.509	21.389892	-88.891956

14 CARR: Mérida - Progreso

CLAVE: 31091

RUTA: MEX-261

AÑO: 2023

LUGAR	ESTACION				CLASIFICACION VEHICULAR EN PORCIENTO										COORDENADAS					
	KM	TE	SC	TDPA	M	A	B	C2	C3	T3S2	T3S3	T3S2R4	OTROS	A	B	C	K'	D	LATITUD	LONGITUD
T. C. Mérida - Dzilam de Bravo	0.00																			
Periférico Mérida	5.40	1	1	27140	5.7	89.0	0.4	1.2	0.8	0.6	0.1	1.7	0.5	94.7	0.4	4.9	0.077	0.513	21.043372	-89.629119
Periférico Mérida	5.40	1	2	28724	6.0	88.9	0.4	1.1	0.6	0.5	0.1	1.9	0.5	94.9	0.4	4.7	0.076	0.513	21.043299	-89.629365
T. Izq. Dzityá	10.40	1	1	43720	6.4	87.6	0.5	1.4	1.1	1.0	0.3	1.3	0.4	94.0	0.5	5.5	0.088	0.529	21.053026	-89.630796
T. Izq. Dzityá	10.40	1	2	38401	6.4	87.8	0.5	1.6	1.0	0.9	0.3	1.1	0.4	94.2	0.5	5.3	0.080	0.529	21.052930	-89.631074
T. Izq. Dzityá	10.40	3	1	37015	5.7	88.2	0.6	1.5	0.9	1.1	0.4	1.3	0.3	93.9	0.6	5.5	0.084	0.503	21.068425	-89.633368
T. Izq. Dzityá	10.40	3	2	37468	5.5	87.4	0.6	1.7	1.2	1.3	0.5	1.5	0.3	92.9	0.6	6.5	0.090	0.503	21.066617	-89.633502
T. Izq. Komchén	15.30	3	1	16918	5.6	85.3	0.8	1.9	1.4	2.1	0.9	1.5	0.5	90.9	0.8	8.3	0.081	0.504	21.113836	-89.640882
T. Izq. Komchén	15.30	3	2	16673	6.5	84.3	0.9	1.9	1.4	1.5	1.3	1.6	0.6	90.8	0.9	8.3	0.083	0.504	21.113570	-89.641118
Progreso	35.04	1	1	12514	5.5	85.5	0.8	2.7	1.2	1.8	0.9	1.3	0.3	91.0	0.8	8.2	0.085	0.507	21.265100	-89.660352
Progreso	35.04	1	2	12188	6.4	83.8	0.9	3.0	1.2	1.9	1.1	1.4	0.3	90.2	0.9	8.9	0.085	0.507	21.266147	-89.661067

15 CARR: Mérida - Puerto Juárez

CLAVE: 00067

RUTA: MEX-180

AÑO: 2023

LUGAR	ESTACION				CLASIFICACION VEHICULAR EN PORCIENTO										COORDENADAS					
	KM	TE	SC	TDPA	M	A	B	C2	C3	T3S2	T3S3	T3S2R4	OTROS	A	B	C	K'	D	LATITUD	LONGITUD
Mérida	0.00																			

YUCATAN

15 CARR: Mérida - Puerto Juárez

CLAVE: 00067

RUTA: MEX-180

AÑO: 2023

LUGAR	ESTACION				CLASIFICACION VEHICULAR EN PORCIENTO													COORDENADAS		
	KM	TE	SC	TDPA	M	A	B	C2	C3	T3S2	T3S3	T3S2R4	OTROS	A	B	C	K'	D	LATITUD	LONGITUD
X. Periférico de Mérida	5.60	1	1	13960	12.9	81.9	0.5	3.1	0.9	0.2	0.2	0.2	0.1	94.8	0.5	4.7	0.075	0.510	20.957321	-89.571844
X. Periférico de Mérida	5.60	1	2	13433	13.1	81.9	0.5	3.1	0.8	0.2	0.2	0.1	0.1	95.0	0.5	4.5	0.077	0.510	20.957406	-89.571825
X. Periférico de Mérida	5.60	3	1	19677	10.8	77.2	1.6	3.7	1.5	2.4	0.8	1.6	0.4	88.0	1.6	10.4	0.068	0.526	20.953659	-89.564428
X. Periférico de Mérida	5.60	3	2	17708	10.6	76.8	1.7	3.9	1.9	2.4	0.8	1.6	0.3	87.4	1.7	10.9	0.073	0.526	20.953751	-89.564338
Teya	13.00	1	1	15060	7.7	77.5	2.6	3.7	2.4	3.0	0.5	2.1	0.5	85.2	2.6	12.2	0.072	0.509	20.935154	-89.527563
Teya	13.00	1	2	15606	7.4	77.7	2.4	4.0	2.3	3.3	0.7	1.8	0.4	85.1	2.4	12.5	0.081	0.509	20.935265	-89.527491
T. C. Teya - Peto	14.20	3	1	9214	9.9	74.1	2.0	4.4	2.7	3.2	1.0	2.2	0.5	84.0	2.0	14.0	0.085	0.504	20.920560	-89.492983
T. C. Teya - Peto	14.20	3	2	9356	10.1	74.6	1.9	4.2	2.7	3.3	0.7	2.0	0.5	84.7	1.9	13.4	0.093	0.504	20.920679	-89.492874
T. Der. Ticopó	21.40	3	1	8574	9.2	74.3	2.2	4.7	2.2	3.5	0.8	2.4	0.7	83.5	2.2	14.3	0.090	0.517	20.893163	-89.435373
T. Der. Ticopó	21.40	3	2	8014	8.8	74.8	2.1	4.9	1.8	3.5	0.7	2.8	0.6	83.6	2.1	14.3	0.107	0.517	20.893258	-89.435270
T. Der. Seyé	28.79	1	1	8842	5.5	77.5	3.0	4.5	1.7	3.5	1.1	2.6	0.6	83.0	3.0	14.0	0.069	0.514	20.895834	-89.391658
T. Der. Seyé	28.79	1	2	9339	5.5	77.4	3.0	4.5	1.7	3.5	1.2	2.6	0.6	82.9	3.0	14.1	0.073	0.514	20.895970	-89.391573
T. Der. Seyé	28.79	3	1	7189	6.0	75.4	3.4	4.9	1.8	3.5	1.3	2.9	0.8	81.4	3.4	15.2	0.078	0.513	20.891730	-89.374375
T. Der. Seyé	28.79	3	2	6820	6.0	75.2	3.4	4.9	1.8	3.6	1.4	2.9	0.8	81.2	3.4	15.4	0.093	0.513	20.891845	-89.374654
Tahmek (1er Acceso)	40.00	1	1	6666	4.5	76.2	3.2	4.8	2.1	4.2	1.2	2.9	0.9	80.7	3.2	16.1	0.088	0.501	20.876039	-89.279066
Tahmek (1er Acceso)	40.00	1	2	6683	4.5	76.0	3.2	4.9	2.2	4.2	1.2	2.9	0.9	80.5	3.2	16.3	0.095	0.501	20.876172	-89.279053
T. C. Libramiento de Tahmek - Hoctun - Xocchel Oeste	42.00	1	1	6670	2.7	80.9	3.3	3.8	2.0	2.6	0.9	3.0	0.8	83.6	3.3	13.1	0.085	0.516	20.881697	-89.258841
T. C. Libramiento de Tahmek - Hoctun - Xocchel Oeste	42.00	1	1	6767	2.8	79.4	3.1	3.5	2.4	3.9	0.8	3.4	0.7	82.2	3.1	14.7	0.091	0.516	20.881834	-89.258871
T. Izq. Hoctún (1º Acceso)	46.65	1	0	3403	10.1	77.8	1.7	7.7	1.1	0.9	0.4	0.3	0.0	87.9	1.7	10.4	0.068	0.513	20.867554	-89.214322
T. Izq. Hoctún (2º Acceso)	48.62	1	0	1746	10.1	78.4	1.5	7.7	0.7	0.7	0.4	0.5	0.0	88.5	1.5	10.0	0.078	0.502	20.858709	-89.202827
T. Izq. Hoctún (2º Acceso)	48.62	3	0	3087	28.2	61.9	1.5	6.7	0.7	0.5	0.2	0.2	0.1	90.1	1.5	8.4	0.068	0.508	20.854486	-89.195973
Xocchel	51.70																			
T. C. Libramiento de Tahmek - Hoctun - Xocchel	56.00	1	0	538	24.5	56.4	1.5	12.1	2.7	1.7	0.5	0.6	0.0	80.9	1.5	17.6	0.098	0.512	20.830692	-89.165801
Kantunil	67.28	1	1	5917	3.1	76.4	3.2	4.0	2.3	4.7	1.2	4.2	0.9	79.5	3.2	17.3	0.070	0.549	20.801952	-89.053552
Kantunil	67.28	1	2	4862	3.1	76.3	3.1	4.0	2.4	4.6	1.4	4.2	0.9	79.4	3.1	17.5	0.088	0.549	20.802056	-89.053511
Kantunil	67.28	3	0	5418	6.2	80.0	2.3	4.6	2.9	2.2	0.9	0.8	0.1	86.2	2.3	11.5	0.078	0.504	20.791286	-89.019256
Libre Unión	92.91	1	0	3548	5.4	76.7	2.9	6.5	3.4	2.6	1.3	1.1	0.1	82.1	2.9	15.0	0.087	0.528	20.708784	-88.818012
Libre Unión	92.91	3	0	3179	6.1	77.7	3.0	6.3	2.9	2.0	1.3	0.6	0.1	83.8	3.0	13.2	0.082	0.527	20.706923	-88.799662
Piste	116.30	3	0	9707	14.7	77.2	1.7	2.7	2.0	0.7	0.4	0.5	0.1	91.9	1.7	6.4	0.091	0.514	20.690966	-88.579648
1er. Acceso a Zona Arqueológica de Chichen-Itzá	117.90	3	0	7829	14.2	72.4	2.3	5.3	1.8	2.3	0.8	0.5	0.4	86.6	2.3	11.1	0.082	0.512	20.688326	-88.572400
2do. Acceso a Zona Arqueológica de Chichen-Itzá	121.10	3	0	6150	14.3	73.8	2.6	4.3	2.1	1.7	0.6	0.5	0.1	88.1	2.6	9.3	0.087	0.517	20.668815	-88.556557
T. Der. Chankom	127.00	1	0	5955	9.0	76.4	3.5	5.3	2.4	1.4	0.8	1.0	0.2	85.4	3.5	11.1	0.090	0.525	20.644181	-88.495171
T. Der. Chankom	127.00	3	0	5200	7.7	78.2	2.9	5.5	2.1	2.0	0.7	0.7	0.2	85.9	2.9	11.2	0.093	0.512	20.637636	-88.474660
Kaua	137.47	3	0	5809	8.7	79.0	3.2	4.4	2.1	1.3	0.6	0.6	0.1	87.7	3.2	9.1	0.087	0.504	20.623598	-88.401764
X. C. Periférico de Valladolid	157.12	1	0	8575	11.8	76.7	2.6	4.1	2.1	1.3	0.5	0.8	0.1	88.5	2.6	8.9	0.079	0.505	20.673525	-88.248349

YUCATAN

15 CARR: Mérida - Puerto Juárez

CLAVE: 00067

RUTA: MEX-180

AÑO: 2023

LUGAR	ESTACION				CLASIFICACION VEHICULAR EN PORCIENTO										COORDENADAS					
	KM	TE	SC	TDPA	M	A	B	C2	C3	T3S2	T3S3	T3S2R4	OTROS	A	B	C	K'	D	LATITUD	LONGITUD
Valladolid	160.68	1	0	9301	19.0	75.5	1.3	3.0	0.6	0.2	0.1	0.2	0.1	94.5	1.3	4.2	0.091	0.501	20.682800	-88.233517
Valladolid	160.68	3	0	10122	22.6	73.0	0.6	2.2	0.7	0.4	0.1	0.3	0.1	95.6	0.6	3.8	0.074	0.533	20.694981	-88.164067
X. C. Periférico de Valladolid	165.60	3	0	10714	12.6	75.4	1.6	3.0	2.7	2.5	0.8	1.2	0.2	88.0	1.6	10.4	0.076	0.501	20.696294	-88.155130
T. Der. Coba	187.80	1	0	7670	6.0	82.1	1.8	3.2	2.2	2.8	0.6	1.1	0.2	88.1	1.8	10.1	0.083	0.502	20.659629	-87.961731
T. Der. Chemax	189.79	1	0	6353	9.9	82.3	1.1	3.1	1.2	1.2	0.3	0.7	0.2	92.2	1.1	6.7	0.083	0.504	20.657870	-87.951465
T. Der. Chemax	189.79	3	0	4397	9.2	80.4	1.6	3.6	1.9	2.1	0.4	0.6	0.2	89.6	1.6	8.8	0.085	0.500	20.665085	-87.924677
X-Can	225.00	3	0	3210	4.9	82.2	2.1	4.6	1.9	2.6	0.7	0.8	0.2	87.1	2.1	10.8	0.083	0.506	20.860448	-87.656785
Lim. Edos. Term. Yuc. Ppia. Q. R.	230.40																			
Nuevo X-Can	231.90	3	0	3844	4.3	83.7	1.4	4.9	2.1	2.2	0.4	0.8	0.2	88.0	1.4	10.6	0.082	0.504	20.871577	-87.591142
Zaragoza	239.00	1	0	5235	10.9	77.2	1.6	4.6	2.1	2.4	0.5	0.7	0.0	88.1	1.6	10.3	0.080	0.505	20.880576	-87.537662
Zaragoza	239.00	3	0	4001	6.6	78.6	2.2	5.6	2.4	2.9	0.5	1.0	0.2	85.2	2.2	12.6	0.082	0.503	20.883935	-87.517716
Vicente Guerrero	261.00	1	0	3851	8.4	77.4	1.8	4.9	3.9	2.5	0.4	0.6	0.1	85.8	1.8	12.4	0.078	0.509	20.940875	-87.331815
Leona Vicario	275.50	1	0	4951	5.7	82.4	2.2	4.6	1.5	2.1	0.7	0.7	0.1	88.1	2.2	9.7	0.086	0.528	20.979981	-87.225879
Leona Vicario	275.50	3	0	7261	14.6	75.9	2.0	3.8	1.3	1.3	0.3	0.7	0.1	90.5	2.0	7.5	0.084	0.533	20.993427	-87.188800
T. Der. Aeropuerto	302.50	1	0	12518	6.2	83.3	1.2	3.8	2.5	1.6	0.8	0.5	0.1	89.5	1.2	9.3	0.060	0.526	21.096412	-86.982974
T. Der. Aeropuerto	302.50	3	1	5866	5.2	77.0	1.7	7.9	3.4	2.0	0.8	1.5	0.5	82.2	1.7	16.1	0.097	0.507	21.102759	-86.970021
T. Der. Aeropuerto	302.50	3	2	6036	5.1	75.0	1.9	8.9	3.9	2.2	0.8	1.7	0.5	80.1	1.9	18.0	0.096	0.507	21.102885	-86.970111
T. Der. Alfredo V. Bonfil	310.00	1	1	32552	7.9	82.7	1.0	2.3	1.3	1.6	0.3	2.2	0.7	90.6	1.0	8.4	0.071	0.516	21.138152	-86.899046
T. Der. Alfredo V. Bonfil	310.00	1	2	34938	7.8	82.4	1.0	2.5	1.3	1.7	0.2	2.4	0.7	90.2	1.0	8.8	0.068	0.516	21.138372	-86.898919
Puerto Juárez	321.41																			

16 CARR: Mérida - Tekanto

CLAVE: 31587

RUTA: MEX-180

AÑO: 2023

LUGAR	ESTACION				CLASIFICACION VEHICULAR EN PORCIENTO										COORDENADAS					
	KM	TE	SC	TDPA	M	A	B	C2	C3	T3S2	T3S3	T3S2R4	OTROS	A	B	C	K'	D	LATITUD	LONGITUD
T. C. Mérida - Puerto Juárez	0.00																			
X. Periférico de Mérida	5.70	1	0	18092	10.8	82.4	0.5	2.7	0.9	0.6	1.2	0.6	0.3	93.2	0.5	6.3	0.074	0.526	20.961151	-89.570716
T. Der. Tixpéhual	13.25	1	0	7684	18.5	74.5	0.8	3.3	1.7	0.7	0.2	0.2	0.1	93.0	0.8	6.2	0.097	0.512	20.976446	-89.463392
T. Der. Tixpéhual	13.25	3	0	4821	4.2	84.5	0.9	5.8	1.6	1.0	0.4	1.2	0.4	88.7	0.9	10.4	0.090	0.525	20.982711	-89.455811
Tixkokob	21.00	1	0	5397	3.4	87.0	1.6	5.2	1.3	0.7	0.5	0.2	0.1	90.4	1.6	8.0	0.099	0.533	20.999207	-89.425521
Tixkokob	21.00	3	0	4102	30.7	60.6	0.5	5.1	1.9	0.7	0.3	0.2	0.0	91.3	0.5	8.2	0.084	0.501	21.000315	-89.374152
Cacalchén	38.00	1	0	2146	25.3	66.1	0.7	5.5	1.4	0.7	0.3	0.0	0.0	91.4	0.7	7.9	0.106	0.505	20.985811	-89.247837
Tekanto	51.00	1	0	1357	51.7	41.2	0.5	5.4	1.0	0.1	0.0	0.1	0.0	92.9	0.5	6.6	0.086	0.507	21.010409	-89.118198

YUCATAN

17 CARR: Mérida - Tetiz

CLAVE: 31610

RUTA: MEX-281

AÑO: 2023

LUGAR	ESTACION				CLASIFICACION VEHICULAR EN PORCIENTO										COORDENADAS					
	KM	TE	SC	TDPA	M	A	B	C2	C3	T3S2	T3S3	T3S2R4	OTROS	A	B	C	K'	D	LATITUD	LONGITUD
Anillo Periferico Lic. Manuel Berzunza	0.00	3	0	18939	7.6	85.8	0.7	2.6	1.0	1.2	0.4	0.4	0.3	93.4	0.7	5.9	0.096	0.500	20.983657	-89.699687
X. C. Hunucmá - Umán	17.98	1	0	6186	12.9	73.4	1.5	6.5	1.2	2.2	0.7	1.4	0.2	86.3	1.5	12.2	0.099	0.515	20.982057	-89.841982
X. C. Hunucmá - Umán	17.98	3	0	2757	9.1	80.1	1.9	5.0	1.1	2.1	0.4	0.3	0.0	89.2	1.9	8.9	0.093	0.524	20.979273	-89.860889
X. C. Mérida - Celestún	24.40	1	0	2967	12.7	76.9	1.4	6.4	1.2	1.2	0.2	0.0	0.0	89.6	1.4	9.0	0.095	0.509	20.979191	-89.908120

18 CARR: Muna - Felipe Carrillo Puerto

CLAVE: 00148

RUTA: MEX-184

AÑO: 2023

LUGAR	ESTACION				CLASIFICACION VEHICULAR EN PORCIENTO										COORDENADAS					
	KM	TE	SC	TDPA	M	A	B	C2	C3	T3S2	T3S3	T3S2R4	OTROS	A	B	C	K'	D	LATITUD	LONGITUD
Muna	0.00	3	0	4098	8.7	73.2	1.3	10.1	1.5	2.1	1.1	1.1	0.9	81.9	1.3	16.8	0.077	0.503	20.474317	-89.694347
Ticul	19.10	1	0	2655	8.9	72.4	1.4	10.3	1.5	2.6	1.3	1.3	0.3	81.3	1.4	17.3	0.081	0.503	20.407164	-89.574519
Ticul	19.10	3	0	8029	35.6	52.3	1.0	4.8	0.9	3.4	0.8	0.6	0.6	87.9	1.0	11.1	0.075	0.530	20.372799	-89.516997
Oxkutzcab	40.50	3	0	7467	21.2	67.3	1.0	5.3	1.0	1.9	1.4	0.6	0.3	88.5	1.0	10.5	0.071	0.527	20.281696	-89.374523
Tekax	53.90	3	0	4496	43.1	50.8	0.7	2.3	1.0	0.9	0.2	0.7	0.3	93.9	0.7	5.4	0.098	0.524	20.188984	-89.268682
Tzucacab	86.60	1	0	1882	33.5	59.2	0.9	4.7	0.9	0.3	0.2	0.2	0.1	92.7	0.9	6.4	0.078	0.516	20.078544	-89.062377
Tzucacab	86.60	3	0	1448	39.7	57.3	0.6	1.5	0.6	0.1	0.1	0.1	0.0	97.0	0.6	2.4	0.071	0.506	20.062231	-89.036001
Santa Rosa	109.60	3	0	2289	7.9	76.3	3.1	4.8	1.5	2.0	0.8	3.0	0.6	84.2	3.1	12.7	0.088	0.506	19.947306	-88.880263
Lim. Edos. Term. Yuc. Ppia. Q. R.	117.00																			
Dziuche	118.00	1	0	2611	8.0	76.5	3.0	4.7	1.7	1.8	0.8	2.9	0.6	84.5	3.0	12.5	0.079	0.516	19.905508	-88.819717
Dziuche	118.00	3	0	3372	9.9	77.0	2.5	4.2	1.4	1.6	0.6	2.4	0.4	86.9	2.5	10.6	0.079	0.502	19.888948	-88.803876
José María Morelos	138.60	1	0	4877	15.5	75.2	1.7	3.2	1.2	1.0	0.4	1.5	0.3	90.7	1.7	7.6	0.071	0.540	19.764441	-88.725104
José María Morelos	138.60	3	0	3293	12.4	75.2	2.2	3.9	1.7	1.6	0.7	2.0	0.3	87.6	2.2	10.2	0.084	0.511	19.736567	-88.691536
Polyuc	161.94	1	0	2909	12.4	71.6	2.4	5.4	2.3	2.1	1.0	2.6	0.2	84.0	2.4	13.6	0.073	0.502	19.611629	-88.571723
Polyuc	161.94	3	0	1473	9.2	81.9	0.8	4.4	1.7	1.1	0.5	0.4	0.0	91.1	0.8	8.1	0.092	0.505	19.609489	-88.553433
T. Der. Dzulá	178.11	3	0	1480	6.1	84.4	1.3	4.5	1.9	1.0	0.4	0.4	0.0	90.5	1.3	8.2	0.095	0.501	19.643495	-88.405602
Felipe Carrillo Puerto	216.97	1	0	7824	28.1	67.8	1.0	1.5	0.7	0.5	0.1	0.3	0.0	95.9	1.0	3.1	0.103	0.501	19.584486	-88.057972

19 CARR: Ramal a Panabá

CLAVE: 31609

RUTA: MEX-295

AÑO: 2023

LUGAR	ESTACION				CLASIFICACION VEHICULAR EN PORCIENTO										COORDENADAS					
	KM	TE	SC	TDPA	M	A	B	C2	C3	T3S2	T3S3	T3S2R4	OTROS	A	B	C	K'	D	LATITUD	LONGITUD
T. C. Valladolid - Rio Lagartos	0.00	3	0	1508	30.1	65.5	1.0	1.9	0.8	0.4	0.1	0.2	0.0	95.6	1.0	3.4	0.092	0.503	21.194270	-88.170467
Panabá	18.00	1	0	1439	29.7	66.2	0.9	1.8	0.7	0.4	0.1	0.2	0.0	95.9	0.9	3.2	0.092	0.503	21.284521	-88.268655

YUCATAN

20 CARR: Teya -Peto

CLAVE: 31042

RUTA: MEX-184

AÑO: 2023

LUGAR	ESTACION				CLASIFICACION VEHICULAR EN PORCIENTO													COORDENADAS		
	KM	TE	SC	TDPA	M	A	B	C2	C3	T3S2	T3S3	T3S2R4	OTROS	A	B	C	K'	D	LATITUD	LONGITUD
T. C. Mérida - Puerto Juárez	0.00																			
San Antonio Tehuizt	3.80	3	1	6456	10.7	79.5	1.2	3.2	2.3	1.5	0.5	0.8	0.3	90.2	1.2	8.6	0.104	0.520	20.888195	-89.508001
San Antonio Tehuizt	3.80	3	2	5949	9.4	79.2	1.4	3.5	2.8	1.7	0.8	0.9	0.3	88.6	1.4	10.0	0.103	0.520	20.888211	-89.507907
T. Izq. Acanceh	13.70	1	1	4135	8.2	81.2	1.4	3.6	1.6	2.0	0.8	1.1	0.1	89.4	1.4	9.2	0.108	0.502	20.816496	-89.471872
T. Izq. Acanceh	13.70	1	2	4107	8.4	80.4	1.5	3.7	1.9	2.1	0.7	1.2	0.1	88.8	1.5	9.7	0.095	0.502	20.816495	-89.471726
Tecoh	22.00	3	1	3531	10.0	77.7	1.9	4.1	1.6	2.2	0.9	1.1	0.5	87.7	1.9	10.4	0.110	0.521	20.711282	-89.476014
Tecoh	22.00	3	2	3837	9.8	77.5	2.0	4.1	1.9	2.1	0.9	1.2	0.5	87.3	2.0	10.7	0.097	0.521	20.711490	-89.475938
T. Der. Zona Arq. de Mayapan	37.65	1	1	2760	5.9	81.3	1.6	3.6	2.3	2.8	1.1	1.2	0.2	87.2	1.6	11.2	0.109	0.504	20.633584	-89.459098
T. Der. Zona Arq. de Mayapan	37.65	1	2	2721	5.6	82.2	1.6	3.6	2.1	2.6	0.9	1.2	0.2	87.8	1.6	10.6	0.086	0.504	20.633655	-89.458989
T. Izq. Teabo	69.05	1	1	2774	6.7	80.5	2.3	2.6	2.5	2.8	1.1	1.4	0.1	87.2	2.3	10.5	0.096	0.507	20.410311	-89.307301
T. Izq. Teabo	69.05	1	2	2693	6.4	80.6	2.2	3.1	2.6	2.7	0.9	1.3	0.2	87.0	2.2	10.8	0.091	0.507	20.410311	-89.307169
T. Izq. Tixmehuac	97.10	1	0	2953	4.6	76.4	3.4	4.4	3.2	3.1	2.0	2.6	0.3	81.0	3.4	15.6	0.067	0.507	20.232041	-89.129691
T. Izq. Tixmehuac	97.10	3	0	2771	4.4	81.1	2.7	3.3	2.1	2.7	1.1	2.2	0.4	85.5	2.7	11.8	0.091	0.517	20.224828	-89.118113
Peto	120.70	1	0	3301	10.3	75.3	3.0	3.5	2.6	2.4	0.9	1.7	0.3	85.6	3.0	11.4	0.071	0.501	20.124081	-88.950422

21 CARR: Tzucacab - Santa Rosa

CLAVE: 31017

RUTA: MEX

AÑO: 2023

LUGAR	ESTACION				CLASIFICACION VEHICULAR EN PORCIENTO													COORDENADAS		
	KM	TE	SC	TDPA	M	A	B	C2	C3	T3S2	T3S3	T3S2R4	OTROS	A	B	C	K'	D	LATITUD	LONGITUD
Tzucacab	0.00	3	0	1804	34.6	58.6	0.6	4.5	0.8	0.4	0.4	0.1	0.0	93.2	0.6	6.2	0.076	0.500	20.073634	-89.035848
T. C. Teya -Peto	11.30																			
Peto	16.00	3	0	2918	22.9	64.2	2.3	3.9	1.8	2.2	0.7	1.7	0.3	87.1	2.3	10.6	0.073	0.511	20.084052	-88.912024
Santa Rosa	34.50	1	0	2083	11.3	71.1	2.8	5.5	1.9	2.7	1.0	3.4	0.3	82.4	2.8	14.8	0.086	0.526	19.979072	-88.885899

22 CARR: Valladolid - Felipe Carrillo Puerto

CLAVE: 00010

RUTA: MEX-295

AÑO: 2023

LUGAR	ESTACION				CLASIFICACION VEHICULAR EN PORCIENTO													COORDENADAS		
	KM	TE	SC	TDPA	M	A	B	C2	C3	T3S2	T3S3	T3S2R4	OTROS	A	B	C	K'	D	LATITUD	LONGITUD
Valladolid	0.00	3	0	8385	31.2	63.5	0.5	2.4	0.5	1.1	0.1	0.2	0.5	94.7	0.5	4.8	0.094	0.507	20.673274	-88.204493
Chichimilá	6.90	3	0	3181	19.6	77.5	0.3	1.3	0.6	0.3	0.0	0.2	0.2	97.1	0.3	2.6	0.094	0.507	20.620021	-88.236644
Tekom	12.05	3	0	2630	19.5	77.3	0.3	1.4	0.7	0.4	0.0	0.2	0.2	96.8	0.3	2.9	0.092	0.506	20.590225	-88.265398
Tixcacalcupul	19.80	3	0	946	14.7	76.2	1.0	5.8	1.0	0.3	0.1	0.4	0.5	90.9	1.0	8.1	0.089	0.502	20.520268	-88.270787
Lim. Edos. Term. Yuc. Ppia. Q. R.	46.00																			
Tepich	51.40	1	0	1006	21.6	72.9	0.4	1.5	1.9	0.6	0.1	0.4	0.6	94.5	0.4	5.1	0.087	0.505	20.248746	-88.255248
Tihosuco	65.00	1	0	1138	16.8	76.9	2.5	1.3	1.0	0.3	0.2	0.6	0.4	93.7	2.5	3.8	0.092	0.505	20.193221	-88.360422

YUCATAN

22 CARR: Valladolid - Felipe Carrillo Puerto

CLAVE: 00010

RUTA: MEX-295

AÑO: 2023

LUGAR	ESTACION				CLASIFICACION VEHICULAR EN PORCIENTO										COORDENADAS					
	KM	TE	SC	TDPA	M	A	B	C2	C3	T3S2	T3S3	T3S2R4	OTROS	A	B	C	K'	D	LATITUD	LONGITUD
Tihosuco	65.00	3	0	1281	16.0	75.7	1.0	5.4	0.7	0.2	0.1	0.4	0.5	91.7	1.0	7.3	0.082	0.514	20.189795	-88.387358
T. Izq. San Felipe Berriozábal	99.00	1	0	718	12.4	83.2	2.0	0.6	1.0	0.3	0.1	0.4	0.0	95.6	2.0	2.4	0.108	0.514	19.962444	-88.241567
T. Izq. San Felipe Berriozábal	99.00	3	0	848	12.4	79.6	1.2	1.8	2.6	1.1	0.3	0.7	0.3	92.0	1.2	6.8	0.090	0.527	19.961718	-88.240816
Señor	116.50	1	0	1149	15.5	78.5	1.8	2.5	0.5	0.2	0.2	0.3	0.5	94.0	1.8	4.2	0.087	0.513	19.851090	-88.143659
Señor	116.50	3	0	1572	12.4	76.6	2.6	4.4	0.8	1.0	0.9	0.9	0.4	89.0	2.6	8.4	0.085	0.511	19.833059	-88.131834
Felipe Carrillo Puerto	147.70	1	0	2014	17.5	77.2	1.0	3.0	0.4	0.5	0.1	0.3	0.0	94.7	1.0	4.3	0.087	0.504	19.602385	-88.053562

23 CARR: Valladolid - Río Lagartos

CLAVE: 31035

RUTA: MEX-295

AÑO: 2023

LUGAR	ESTACION				CLASIFICACION VEHICULAR EN PORCIENTO										COORDENADAS					
	KM	TE	SC	TDPA	M	A	B	C2	C3	T3S2	T3S3	T3S2R4	OTROS	A	B	C	K'	D	LATITUD	LONGITUD
Valladolid	0.00	3	1	5476	17.8	73.3	2.0	2.8	1.7	1.2	0.3	0.7	0.2	91.1	2.0	6.9	0.090	0.501	20.729189	-88.202896
Valladolid	0.00	3	2	5496	17.8	73.3	2.0	2.8	1.6	1.2	0.3	0.7	0.3	91.1	2.0	6.9	0.093	0.501	20.729259	-88.203006
Temozón	12.70	3	0	4273	22.6	69.6	1.0	2.5	1.2	1.4	0.2	1.3	0.2	92.2	1.0	6.8	0.076	0.505	20.820267	-88.194714
Tizimin	51.80	1	0	3828	19.1	68.3	1.2	2.2	3.2	2.3	1.3	2.1	0.3	87.4	1.2	11.4	0.079	0.531	21.092292	-88.161431
Tizimin	51.80	3	0	3991	32.4	60.8	0.9	2.4	0.9	1.2	0.2	1.1	0.1	93.2	0.9	5.9	0.084	0.506	21.188471	-88.166734
T. Der. Dzonot Carretero	79.90	1	0	1597	24.2	58.0	2.1	6.6	2.5	2.5	0.6	2.9	0.6	82.2	2.1	15.7	0.103	0.528	21.365981	-88.143950
Río Lagartos	103.90																			

24 CARR: Mérida - Cancún (Cuota)

CLAVE: 00071

RUTA: MEX-180D

AÑO: 2023

LUGAR	ESTACION				CLASIFICACION VEHICULAR EN PORCIENTO										COORDENADAS					
	KM	TE	SC	TDPA	M	A	B	C2	C3	T3S2	T3S3	T3S2R4	OTROS	A	B	C	K'	D	LATITUD	LONGITUD
T. C. Mérida - Puerto Juárez	66.00	3	1	4370	2.6	73.7	6.6	5.2	1.7	3.8	1.3	4.2	0.9	76.3	6.6	17.1	0.082	0.509	20.802804	-89.044774
T. C. Mérida - Puerto Juárez	66.00	3	2	4212	2.5	73.6	5.1	4.4	2.6	5.0	1.2	4.7	0.9	76.1	5.1	18.8	0.098	0.509	20.803066	-89.044875
X. C. Kantunil - Izamal	68.00	3	1	3392	3.0	65.4	5.5	4.6	7.8	6.2	1.6	4.9	1.0	68.4	5.5	26.1	0.081	0.543	20.804695	-89.020622
X. C. Kantunil - Izamal	68.00	3	2	2859	3.4	69.5	4.8	5.2	3.5	5.8	1.7	5.2	0.9	72.9	4.8	22.3	0.099	0.543	20.804929	-89.020360
Plaza de Cobro Piste	115.34	1	1	2385	2.1	70.7	4.9	3.9	2.0	5.7	1.6	8.2	0.9	72.8	4.9	22.3	0.096	0.526	20.732628	-88.599203
Plaza de Cobro Piste	115.34	1	2	2649	1.8	71.6	4.9	3.5	2.2	5.9	1.2	8.1	0.8	73.4	4.9	21.7	0.112	0.526	20.732712	-88.599210
X. C. Valladolid - Río Lagartos	155.65	1	1	2836	2.4	68.2	4.7	4.1	5.7	5.4	1.5	7.0	1.0	70.6	4.7	24.7	0.084	0.502	20.745387	-88.251000
X. C. Valladolid - Río Lagartos	155.65	1	2	2809	2.7	68.9	4.5	4.2	5.5	5.2	1.3	6.8	0.9	71.6	4.5	23.9	0.087	0.502	20.745505	-88.250925
Estación Fitosanitaria X-Can	216.70	3	1	2631	2.8	64.1	6.3	6.7	5.5	5.2	2.2	6.3	0.9	66.9	6.3	26.8	0.105	0.508	20.880195	-87.596299
Estación Fitosanitaria X-Can	216.70	3	2	2549	2.9	64.9	6.3	6.4	5.7	5.1	1.8	6.1	0.8	67.8	6.3	25.9	0.085	0.508	20.880298	-87.596311
Lim. Edos. Term. Yuc. Ppia. O. R.	219.80																			
X. C. El Cedral - Playa del Carmen	237.20	3	1	2038	6.8	64.7	5.4	4.9	6.9	4.3	0.4	5.7	0.9	71.5	5.4	23.1	0.111	0.516	20.923750	-87.368939

YUCATAN

24 CARR: Mérida - Cancún (Cuota)

CLAVE: 00071

RUTA: MEX-180D

AÑO: 2023

LUGAR	ESTACION				CLASIFICACION VEHICULAR EN PORCIENTO														COORDENADAS	
	KM	TE	SC	TDPA	M	A	B	C2	C3	T3S2	T3S3	T3S2R4	OTROS	A	B	C	K'	D	LATITUD	LONGITUD
X. C. El Cedral - Playa del Carmen	237.20	3	2	1910	6.3	63.8	5.5	4.5	8.0	4.2	0.6	6.1	1.0	70.1	5.5	24.4	0.105	0.516	20.923849	-87.368977
T. C. Mérida - Puerto Juárez	292.00	1	1	2383	8.0	69.1	5.0	4.1	2.2	4.6	1.3	4.9	0.8	77.1	5.0	17.9	0.106	0.514	21.096178	-86.978256
T. C. Mérida - Puerto Juárez	292.00	1	2	2525	8.9	70.7	5.0	3.5	2.0	3.6	1.3	4.1	0.9	79.6	5.0	15.4	0.107	0.514	21.096452	-86.978346
T. Av. Huayacán	300.80	2	0	19021	6.8	78.0	3.6	4.0	3.0	2.1	0.6	1.5	0.4	84.8	3.6	11.6	0.090	0.528	21.053823	-86.910595
T. C. Reforma Agraria - Puerto Juárez	307.80	1	0	24256	4.8	85.1	1.8	3.8	1.6	1.2	0.4	1.1	0.2	89.9	1.8	8.3	0.081	0.508	21.021569	-86.860428

25 CARR: Acanceh - Estación Polabán

CLAVE: 31615

RUTA: YUC

AÑO: 2023

LUGAR	ESTACION				CLASIFICACION VEHICULAR EN PORCIENTO														COORDENADAS	
	KM	TE	SC	TDPA	M	A	B	C2	C3	T3S2	T3S3	T3S2R4	OTROS	A	B	C	K'	D	LATITUD	LONGITUD
Acanceh	0.00	3	0	2622	34.0	59.2	1.0	4.2	0.9	0.3	0.1	0.2	0.1	93.2	1.0	5.8	0.092	0.510	20.808819	-89.439860
Homún	20.00	3	0	1600	57.4	38.1	0.5	3.4	0.4	0.1	0.1	0.0	0.0	95.5	0.5	4.0	0.104	0.501	20.734735	-89.267061
Estación Polabán	24.40	1	0	807	55.0	39.0	0.5	4.7	0.5	0.2	0.1	0.0	0.0	94.0	0.5	5.5	0.091	0.502	20.726801	-89.224797

26 CARR: Baca - Dzidzantún

CLAVE: 31591

RUTA: YUC

AÑO: 2023

LUGAR	ESTACION				CLASIFICACION VEHICULAR EN PORCIENTO														COORDENADAS	
	KM	TE	SC	TDPA	M	A	B	C2	C3	T3S2	T3S3	T3S2R4	OTROS	A	B	C	K'	D	LATITUD	LONGITUD
Baca	0.00	3	0	2250	41.8	53.2	0.6	2.4	0.7	0.5	0.3	0.1	0.4	95.0	0.6	4.4	0.099	0.505	21.122512	-89.393957
Dzemul	15.00	1	0	380	11.2	82.3	0.7	3.8	1.6	0.1	0.1	0.0	0.2	93.5	0.7	5.8	0.123	0.523	21.204998	-89.319433
Dzemul	15.00	3	0	2608	54.7	40.4	0.2	3.2	0.4	0.7	0.2	0.1	0.1	95.1	0.2	4.7	0.092	0.501	21.208760	-89.296140
Pueblo Telchac	19.10	3	0	1686	37.3	59.8	0.3	2.1	0.3	0.1	0.1	0.0	0.0	97.1	0.3	2.6	0.075	0.503	21.202951	-89.255679
Sinanché	29.10	3	0	726	45.5	46.6	0.4	5.7	1.0	0.3	0.0	0.0	0.5	92.1	0.4	7.5	0.098	0.509	21.225949	-89.174563
Dzidzantún	43.00	1	0	1083	39.4	53.4	0.3	5.1	0.7	0.8	0.1	0.0	0.2	92.8	0.3	6.9	0.093	0.517	21.244614	-89.055524

27 CARR: Citilcum - Tixkochoh

CLAVE: 31064

RUTA: YUC

AÑO: 2023

LUGAR	ESTACION				CLASIFICACION VEHICULAR EN PORCIENTO														COORDENADAS	
	KM	TE	SC	TDPA	M	A	B	C2	C3	T3S2	T3S3	T3S2R4	OTROS	A	B	C	K'	D	LATITUD	LONGITUD
Citilcum	0.00	3	0	1155	40.4	56.3	0.6	1.2	0.7	0.7	0.1	0.0	0.0	96.7	0.6	2.7	0.092	0.529	20.959055	-89.115368
Tekanto	7.00	1	0	846	41.1	55.5	0.9	1.3	0.9	0.2	0.1	0.0	0.0	96.6	0.9	2.5	0.106	0.506	20.999991	-89.105247
Tixkochoh	10.00	1	0	860	29.3	67.4	0.7	1.1	0.4	0.9	0.1	0.1	0.0	96.7	0.7	2.6	0.089	0.500	21.013817	-89.088805

YUCATAN

28 CARR: Dzemul - Xtampú

CLAVE: 31608

RUTA: YUC

AÑO: 2023

LUGAR	ESTACION				CLASIFICACION VEHICULAR EN PORCIENTO													COORDENADAS		
	KM	TE	SC	TDPA	M	A	B	C2	C3	T3S2	T3S3	T3S2R4	OTROS	A	B	C	K'	D	LATITUD	LONGITUD
Dzemul	0.00	3	0	645	28.0	67.8	0.5	2.7	0.7	0.1	0.1	0.1	0.0	95.8	0.5	3.7	0.099	0.519	21.212647	-89.321331
Xtampú	10.00	1	0	908	29.0	68.7	0.3	1.4	0.5	0.1	0.0	0.0	0.0	97.7	0.3	2.0	0.125	0.505	21.331642	-89.348655

29 CARR: Dzidzantún - Santa Clara

CLAVE: 31592

RUTA: YUC

AÑO: 2023

LUGAR	ESTACION				CLASIFICACION VEHICULAR EN PORCIENTO													COORDENADAS		
	KM	TE	SC	TDPA	M	A	B	C2	C3	T3S2	T3S3	T3S2R4	OTROS	A	B	C	K'	D	LATITUD	LONGITUD
Dzidzantún	0.00	3	0	1110	48.5	48.2	0.4	0.8	1.4	0.3	0.1	0.2	0.1	96.7	0.4	2.9	0.095	0.512	21.258550	-89.041534
Santa Clara	14.00	1	0	868	39.0	60.1	0.1	0.4	0.3	0.1	0.0	0.0	0.0	99.1	0.1	0.8	0.092	0.510	21.370938	-89.014382

30 CARR: Hoctún - Cenotillo

CLAVE: 31011

RUTA: YUC-011

AÑO: 2023

LUGAR	ESTACION				CLASIFICACION VEHICULAR EN PORCIENTO													COORDENADAS		
	KM	TE	SC	TDPA	M	A	B	C2	C3	T3S2	T3S3	T3S2R4	OTROS	A	B	C	K'	D	LATITUD	LONGITUD
Hoctún	0.00	3	0	3378	9.8	81.6	1.2	3.7	2.2	0.8	0.4	0.3	0.0	91.4	1.2	7.4	0.090	0.515	20.880348	-89.188637
Citilcum	13.20	3	0	2112	33.1	60.2	0.4	5.1	0.7	0.4	0.0	0.1	0.0	93.3	0.4	6.3	0.097	0.531	20.950791	-89.110706
Izamal	24.00	3	0	3212	45.1	46.9	0.6	2.8	3.7	0.5	0.3	0.1	0.0	92.0	0.6	7.4	0.092	0.501	20.933972	-89.000495
Tunkás	55.20	3	0	731	43.9	52.5	0.5	2.3	0.5	0.1	0.2	0.0	0.0	96.4	0.5	3.1	0.081	0.510	20.916024	-88.735549
Cenotillo	70.90	1	0	644	42.4	53.7	0.7	2.4	0.6	0.1	0.1	0.0	0.0	96.1	0.7	3.2	0.096	0.502	20.961725	-88.630777

31 CARR: Holcá - Sotuta

CLAVE: 31626

RUTA: YUC

AÑO: 2023

LUGAR	ESTACION				CLASIFICACION VEHICULAR EN PORCIENTO													COORDENADAS		
	KM	TE	SC	TDPA	M	A	B	C2	C3	T3S2	T3S3	T3S2R4	OTROS	A	B	C	K'	D	LATITUD	LONGITUD
T. C. Mérida - Puerto Juárez	0.00	3	0	886	20.1	73.9	1.3	2.4	1.3	0.6	0.1	0.3	0.0	94.0	1.3	4.7	0.102	0.527	20.750149	-88.930535
Tibolón	10.00	3	0	907	18.8	73.6	1.5	3.8	1.0	0.6	0.3	0.4	0.0	92.4	1.5	6.1	0.104	0.528	20.659615	-88.950028
Sotuta	20.00	1	0	972	27.2	66.5	1.2	2.3	1.4	0.6	0.2	0.6	0.0	93.7	1.2	5.1	0.105	0.528	20.607142	-89.002412

32 CARR: Hunucmá - Umán

CLAVE: 31610

RUTA: YUC

AÑO: 2023

LUGAR	ESTACION				CLASIFICACION VEHICULAR EN PORCIENTO													COORDENADAS		
	KM	TE	SC	TDPA	M	A	B	C2	C3	T3S2	T3S3	T3S2R4	OTROS	A	B	C	K'	D	LATITUD	LONGITUD
Hunucmá	0.00	3	0	6114	12.3	75.7	1.0	7.7	1.0	1.7	0.3	0.1	0.2	88.0	1.0	11.0	0.087	0.533	21.003748	-89.863082
X. C. Mérida - Tetiz	4.87	1	0	6169	12.4	76.4	0.8	7.1	1.0	1.7	0.3	0.1	0.2	88.8	0.8	10.4	0.089	0.520	20.982815	-89.854854
X. C. Mérida - Tetiz	4.87	3	0	1236	42.6	49.6	1.1	4.3	1.4	0.7	0.3	0.0	0.0	92.2	1.1	6.7	0.095	0.510	20.975065	-89.851974

YUCATAN

32 CARR: Hunucmá - Umán

CLAVE: 31610

RUTA: YUC

AÑO: 2023

LUGAR	ESTACION				CLASIFICACION VEHICULAR EN PORCIENTO													COORDENADAS		
	KM	TE	SC	TDPA	M	A	B	C2	C3	T3S2	T3S3	T3S2R4	OTROS	A	B	C	K'	D	LATITUD	LONGITUD
Hacienda Dzibikak	16.16	1	0	1342	27.9	64.9	1.0	3.9	1.2	0.8	0.3	0.0	0.0	92.8	1.0	6.2	0.104	0.532	20.905509	-89.798090
Hacienda Dzibikak	16.16	3	0	3817	47.1	44.5	1.2	3.3	1.3	1.1	0.6	0.7	0.2	91.6	1.2	7.2	0.150	0.500	20.902296	-89.785586
Umán	22.00	1	0	4796	50.3	41.9	1.2	2.9	1.1	1.1	0.6	0.7	0.2	92.2	1.2	6.6	0.122	0.507	20.894399	-89.764117

33 CARR: Izamal - Dzilam González

CLAVE: 31605

RUTA: YUC

AÑO: 2023

LUGAR	ESTACION				CLASIFICACION VEHICULAR EN PORCIENTO													COORDENADAS		
	KM	TE	SC	TDPA	M	A	B	C2	C3	T3S2	T3S3	T3S2R4	OTROS	A	B	C	K'	D	LATITUD	LONGITUD
Izamal	0.00	3	0	1959	50.9	46.0	1.0	1.0	0.7	0.2	0.1	0.1	0.0	96.9	1.0	2.1	0.088	0.504	20.945203	-89.006133
Temax	30.00	1	0	948	32.6	61.0	1.7	2.4	1.0	0.6	0.1	0.6	0.0	93.6	1.7	4.7	0.104	0.518	21.132469	-88.938849
Dzilam González	43.00	1	0	1240	30.4	62.8	1.4	4.7	0.6	0.1	0.0	0.0	0.0	93.2	1.4	5.4	0.077	0.513	21.272259	-88.930955

34 CARR: Kantunil - Izamal

CLAVE: 31012

RUTA: YUC

AÑO: 2023

LUGAR	ESTACION				CLASIFICACION VEHICULAR EN PORCIENTO													COORDENADAS		
	KM	TE	SC	TDPA	M	A	B	C2	C3	T3S2	T3S3	T3S2R4	OTROS	A	B	C	K'	D	LATITUD	LONGITUD
Kantunil	0.00	3	0	1163	19.2	72.0	0.7	6.2	0.5	1.1	0.3	0.0	0.0	91.2	0.7	8.1	0.097	0.504	20.811274	-89.026171
Izamal	17.80	1	0	2096	37.0	54.1	0.6	1.9	5.4	0.6	0.2	0.2	0.0	91.1	0.6	8.3	0.088	0.503	20.919087	-89.012754

35 CARR: Kinchil - Umán

CLAVE: 31009

RUTA: YUC

AÑO: 2023

LUGAR	ESTACION				CLASIFICACION VEHICULAR EN PORCIENTO													COORDENADAS		
	KM	TE	SC	TDPA	M	A	B	C2	C3	T3S2	T3S3	T3S2R4	OTROS	A	B	C	K'	D	LATITUD	LONGITUD
Kinchil	0.00	3	0	2031	42.9	45.5	1.5	6.0	1.2	2.2	0.1	0.6	0.0	88.4	1.5	10.1	0.105	0.537	20.911585	-89.938117
Umán	26.00																			

36 CARR: Libramiento de Peto

CLAVE:

RUTA: YUC-018

AÑO: 2023

LUGAR	ESTACION				CLASIFICACION VEHICULAR EN PORCIENTO													COORDENADAS		
	KM	TE	SC	TDPA	M	A	B	C2	C3	T3S2	T3S3	T3S2R4	OTROS	A	B	C	K'	D	LATITUD	LONGITUD
T. C. Teya - Peto	0.00	3	0	1642	7.3	69.8	3.8	5.2	2.8	3.0	2.5	4.9	0.7	77.1	3.8	19.1	0.075	0.512	20.113671	-88.944443
T. C. Tzucacab - Santa Rosa	5.60																			

YUCATAN

37 CARR: Libramiento Norte de Motul

CLAVE: 31610

RUTA: YUC

AÑO: 2023

LUGAR	ESTACION				CLASIFICACION VEHICULAR EN PORCIENTO													COORDENADAS		
	KM	TE	SC	TDPA	M	A	B	C2	C3	T3S2	T3S3	T3S2R4	OTROS	A	B	C	K'	D	LATITUD	LONGITUD
T. C. Mérida - Dzilam de Bravo Poniente	0.00	3	0	9288	9.6	79.1	0.7	6.2	1.3	1.6	0.6	0.7	0.2	88.7	0.7	10.6	0.080	0.528	21.101313	-89.301305
X. C. Motul - Puerto Telchac	3.16	1	0	9289	12.4	76.8	0.8	5.5	1.2	1.7	0.7	0.6	0.3	89.2	0.8	10.0	0.077	0.517	21.114446	-89.284023
X. C. Motul - Puerto Telchac	3.16	3	0	8756	12.8	74.6	0.8	7.5	1.1	1.8	0.7	0.5	0.2	87.4	0.8	11.8	0.068	0.517	21.114492	-89.278899
X. C. Libramiento Suma de Hidalgo	3.70	3	0	1435	26.7	68.5	0.6	2.7	0.9	0.5	0.1	0.0	0.0	95.2	0.6	4.2	0.116	0.527	21.111767	-89.273318
T. C. Mérida - Dzilam de Bravo Oriente	6.53	1	0	1088	37.0	57.7	0.5	2.6	1.2	0.6	0.2	0.2	0.0	94.7	0.5	4.8	0.098	0.524	21.096759	-89.260973

38 CARR: Mérida - Acanceh

CLAVE: 31023

RUTA: YUC

AÑO: 2023

LUGAR	ESTACION				CLASIFICACION VEHICULAR EN PORCIENTO													COORDENADAS		
	KM	TE	SC	TDPA	M	A	B	C2	C3	T3S2	T3S3	T3S2R4	OTROS	A	B	C	K'	D	LATITUD	LONGITUD
Mérida	0.00	3	0	13559	23.9	70.2	0.7	2.8	1.4	0.6	0.1	0.3	0.0	94.1	0.7	5.2	0.079	0.580	20.935172	-89.580029
T. Der. Uxec Tamán	11.00	1	0	892	30.8	66.7	0.6	1.3	0.6	0.0	0.0	0.0	0.0	97.5	0.6	1.9	0.096	0.518	20.876500	-89.528346
T. Der. Uxec Tamán	11.00	3	0	799	22.8	66.7	0.7	9.4	0.3	0.1	0.0	0.0	0.0	89.5	0.7	9.8	0.110	0.503	20.862454	-89.531863
Timucuy	20.00	3	0	1258	33.8	60.4	1.2	4.0	0.6	0.0	0.0	0.0	0.0	94.2	1.2	4.6	0.085	0.517	20.812395	-89.504093
Acanceh	26.00	1	0	1308	37.1	57.7	0.7	3.4	0.5	0.4	0.1	0.1	0.0	94.8	0.7	4.5	0.096	0.515	20.812530	-89.473858

39 CARR: Mérida - Oxkutzcab

CLAVE: 31018

RUTA: YUC-018

AÑO: 2023

LUGAR	ESTACION				CLASIFICACION VEHICULAR EN PORCIENTO													COORDENADAS		
	KM	TE	SC	TDPA	M	A	B	C2	C3	T3S2	T3S3	T3S2R4	OTROS	A	B	C	K'	D	LATITUD	LONGITUD
Mérida	0.00	3	1	14265	19.1	73.5	0.4	6.5	0.3	0.1	0.0	0.1	0.0	92.6	0.4	7.0	0.068	0.528	20.944793	-89.582391
Mérida	0.00	3	2	12744	20.9	71.5	0.5	6.7	0.3	0.1	0.0	0.0	0.0	92.4	0.5	7.1	0.081	0.528	20.944837	-89.582287
Kanasín	5.97	1	1	11129	17.2	78.9	0.4	3.2	0.2	0.1	0.0	0.0	0.0	96.1	0.4	3.5	0.068	0.538	20.940957	-89.571742
Kanasín	5.97	1	2	12955	17.2	78.7	0.4	3.3	0.3	0.1	0.0	0.0	0.0	95.9	0.4	3.7	0.071	0.538	20.940998	-89.571606
Acanceh	20.39	1	0	5967	31.0	58.6	1.0	4.4	0.9	1.7	0.5	1.2	0.7	89.6	1.0	9.4	0.104	0.517	20.823103	-89.466218
Acanceh	20.39	3	1	3491	11.8	76.6	1.8	3.8	1.8	2.0	0.8	1.1	0.3	88.4	1.8	9.8	0.105	0.535	20.789481	-89.460452
Acanceh	20.39	3	2	4017	12.3	76.7	2.0	4.0	1.3	1.8	0.5	1.2	0.2	89.0	2.0	9.0	0.128	0.535	20.789392	-89.460355
T. Der. Tecoh	26.64	3	1	3061	5.4	83.4	1.8	2.6	2.1	2.3	0.9	1.3	0.2	88.8	1.8	9.4	0.091	0.509	20.751392	-89.463898
T. Der. Tecoh	26.64	3	2	3179	5.5	83.7	1.7	2.6	1.9	2.3	0.8	1.3	0.2	89.2	1.7	9.1	0.095	0.509	20.751391	-89.463804
Tekit	61.70	1	0	432	21.0	76.0	0.5	1.6	0.9	0.0	0.0	0.0	0.0	97.0	0.5	2.5	0.142	0.517	20.543879	-89.338082
Tekit	61.70	3	1	2788	4.8	81.6	1.7	4.7	2.0	2.8	0.8	1.3	0.3	86.4	1.7	11.9	0.123	0.515	20.514596	-89.346712
Tekit	61.70	3	2	2627	5.0	81.0	1.9	4.5	2.2	2.8	0.9	1.3	0.4	86.0	1.9	12.1	0.093	0.515	20.514538	-89.346609
Maní	98.20	1	0	4120	20.0	73.3	1.2	2.7	1.2	1.1	0.2	0.2	0.1	93.3	1.2	5.5	0.091	0.502	20.399333	-89.361198
Maní	98.20	3	0	2121	34.3	57.0	0.5	6.2	0.2	1.4	0.2	0.1	0.1	91.3	0.5	8.2	0.094	0.508	20.371901	-89.398880
Oxkutzcab	109.30	1	0	1951	29.8	62.3	0.3	5.2	0.3	1.7	0.1	0.2	0.1	92.1	0.3	7.6	0.094	0.501	20.328119	-89.416669

YUCATAN

40 CARR: Mérida - Timucuy

CLAVE: 31024

RUTA: YUC

AÑO: 2023

LUGAR	ESTACION				CLASIFICACION VEHICULAR EN PORCIENTO													COORDENADAS		
	KM	TE	SC	TDPA	M	A	B	C2	C3	T3S2	T3S3	T3S2R4	OTROS	A	B	C	K'	D	LATITUD	LONGITUD
Mérida	0.00	3	0	7638	23.2	69.3	0.6	4.1	1.0	0.7	0.4	0.5	0.2	92.5	0.6	6.9	0.104	0.513	20.898694	-89.599428
Tekik de Regil	15.10	1	0	2370	26.5	66.4	0.5	5.6	0.5	0.2	0.1	0.1	0.1	92.9	0.5	6.6	0.129	0.516	20.823390	-89.559499
Tekik de Regil	15.10	3	0	1665	34.8	57.9	0.9	5.7	0.3	0.2	0.1	0.1	0.0	92.7	0.9	6.4	0.107	0.501	20.815847	-89.555501
Timucuy	18.65	1	0	1528	33.1	59.0	0.7	6.4	0.5	0.1	0.1	0.1	0.0	92.1	0.7	7.2	0.101	0.508	20.812688	-89.526764

41 CARR: Motul - Puerto Telchac

CLAVE: 31006

RUTA: YUC-172

AÑO: 2023

LUGAR	ESTACION				CLASIFICACION VEHICULAR EN PORCIENTO													COORDENADAS		
	KM	TE	SC	TDPA	M	A	B	C2	C3	T3S2	T3S3	T3S2R4	OTROS	A	B	C	K'	D	LATITUD	LONGITUD
Motul	0.00	3	0	4408	31.1	65.5	0.6	1.5	1.0	0.2	0.1	0.0	0.0	96.6	0.6	2.8	0.092	0.511	21.120730	-89.280734
Pueblo Telchac	12.00	3	0	2848	31.8	65.2	0.2	1.7	0.7	0.2	0.1	0.1	0.0	97.0	0.2	2.8	0.085	0.509	21.215380	-89.271416
Puerto Telchac	28.00																			

42 CARR: Muna - Maxcanú

CLAVE: 31053

RUTA: YUC

AÑO: 2023

LUGAR	ESTACION				CLASIFICACION VEHICULAR EN PORCIENTO													COORDENADAS		
	KM	TE	SC	TDPA	M	A	B	C2	C3	T3S2	T3S3	T3S2R4	OTROS	A	B	C	K'	D	LATITUD	LONGITUD
Muna	0.00	3	0	1290	27.4	62.3	1.8	4.2	1.0	1.7	0.4	0.6	0.6	89.7	1.8	8.5	0.100	0.516	20.491254	-89.736981
Opichén	17.00	3	0	1516	20.1	69.0	1.6	5.3	0.9	1.8	0.5	0.3	0.5	89.1	1.6	9.3	0.103	0.502	20.554792	-89.869101
T. C. Campeche - Mérida	31.00	1	0	1460	18.1	70.0	1.9	6.8	1.2	1.2	0.2	0.6	0.0	88.1	1.9	10.0	0.105	0.512	20.581597	-89.963807

43 CARR: Oxkutzcab - Xul

CLAVE: 31051

RUTA: YUC-031

AÑO: 2023

LUGAR	ESTACION				CLASIFICACION VEHICULAR EN PORCIENTO													COORDENADAS		
	KM	TE	SC	TDPA	M	A	B	C2	C3	T3S2	T3S3	T3S2R4	OTROS	A	B	C	K'	D	LATITUD	LONGITUD
Oxkutzcab	0.00	3	0	3065	34.4	59.6	0.5	3.2	0.5	0.9	0.4	0.3	0.2	94.0	0.5	5.5	0.098	0.502	20.283983	-89.426467
Emiliano Zapata	10.00	3	0	1303	50.1	42.6	0.2	6.1	0.4	0.2	0.1	0.2	0.1	92.7	0.2	7.1	0.109	0.500	20.215044	-89.463757
Xul	25.00	1	0	928	43.7	48.9	0.8	5.6	0.7	0.2	0.1	0.0	0.0	92.6	0.8	6.6	0.095	0.501	20.108189	-89.457770

44 CARR: Piste - Dzitás

CLAVE: 31013

RUTA: YUC-013

AÑO: 2023

LUGAR	ESTACION				CLASIFICACION VEHICULAR EN PORCIENTO													COORDENADAS		
	KM	TE	SC	TDPA	M	A	B	C2	C3	T3S2	T3S3	T3S2R4	OTROS	A	B	C	K'	D	LATITUD	LONGITUD
Piste	0.00	3	0	3385	8.7	83.2	1.7	3.8	0.7	1.5	0.1	0.2	0.1	91.9	1.7	6.4	0.110	0.516	20.708784	-88.586032
Dzitás	18.00	1	0	750	9.3	86.8	0.6	2.1	0.5	0.2	0.4	0.1	0.0	96.1	0.6	3.3	0.111	0.538	20.828825	-88.540937

YUCATAN

45 CARR: Progreso - Telchac Puerto

CLAVE: 31616

RUTA: YUC-027

AÑO: 2023

LUGAR	ESTACION				CLASIFICACION VEHICULAR EN PORCIENTO													COORDENADAS		
	KM	TE	SC	TDPA	M	A	B	C2	C3	T3S2	T3S3	T3S2R4	OTROS	A	B	C	K'	D	LATITUD	LONGITUD
Progreso	0.00	3	1	6837	7.3	87.4	0.2	3.1	0.9	0.5	0.2	0.3	0.1	94.7	0.2	5.1	0.085	0.501	21.276755	-89.654673
Progreso	0.00	3	2	6799	8.9	85.2	0.2	3.7	0.9	0.5	0.2	0.3	0.1	94.1	0.2	5.7	0.089	0.501	21.276843	-89.654700
Chicxulub Puerto	6.00	1	1	5029	7.5	89.3	0.4	1.6	0.7	0.3	0.1	0.1	0.0	96.8	0.4	2.8	0.109	0.512	21.288403	-89.608944
Chicxulub Puerto	6.00	1	2	5285	9.4	87.6	0.3	1.6	0.7	0.2	0.1	0.1	0.0	97.0	0.3	2.7	0.086	0.512	21.288492	-89.608919
Chicxulub Puerto	6.00	3	0	8700	3.5	88.2	0.8	3.7	1.0	2.0	0.3	0.1	0.4	91.7	0.8	7.5	0.112	0.535	21.297510	-89.571700
Xtampú	20.00	1	0	1796	11.6	80.0	0.6	4.7	1.2	1.3	0.5	0.1	0.0	91.6	0.6	7.8	0.121	0.548	21.332615	-89.352608
Xtampú	20.00	3	0	2194	9.6	83.2	0.5	4.0	1.3	1.0	0.3	0.1	0.0	92.8	0.5	6.7	0.121	0.509	21.333980	-89.343117
Telchac Puerto	33.00	1	0	3089	25.9	70.4	0.4	1.7	0.8	0.4	0.2	0.1	0.1	96.3	0.4	3.3	0.121	0.506	21.340146	-89.291617

46 CARR: Ramal a Chankom

CLAVE: 31049

RUTA: YUC

AÑO: 2023

LUGAR	ESTACION				CLASIFICACION VEHICULAR EN PORCIENTO													COORDENADAS		
	KM	TE	SC	TDPA	M	A	B	C2	C3	T3S2	T3S3	T3S2R4	OTROS	A	B	C	K'	D	LATITUD	LONGITUD
T. C. Mérida - Puerto Juárez	0.00	3	0	558	24.2	71.3	0.5	3.2	0.5	0.3	0.0	0.0	0.0	95.5	0.5	4.0	0.089	0.501	20.640179	-88.489220
Chankom	9.00	1	0	538	20.7	75.9	0.6	1.8	0.9	0.0	0.1	0.0	0.0	96.6	0.6	2.8	0.111	0.507	20.584499	-88.507338

47 CARR: Ramal a Dzonot Carretero

CLAVE: 31614

RUTA: YUC

AÑO: 2023

LUGAR	ESTACION				CLASIFICACION VEHICULAR EN PORCIENTO													COORDENADAS		
	KM	TE	SC	TDPA	M	A	B	C2	C3	T3S2	T3S3	T3S2R4	OTROS	A	B	C	K'	D	LATITUD	LONGITUD
T. C. Valladolid - Río Lagartos	0.00	3	0	611	38.9	56.4	1.2	2.5	0.6	0.2	0.1	0.1	0.0	95.3	1.2	3.5	0.102	0.516	21.378134	-88.136850
Dzonot Carretero	35.00																			

48 CARR: Ramal a San Felipe

CLAVE: 31628

RUTA: YUC

AÑO: 2023

LUGAR	ESTACION				CLASIFICACION VEHICULAR EN PORCIENTO													COORDENADAS		
	KM	TE	SC	TDPA	M	A	B	C2	C3	T3S2	T3S3	T3S2R4	OTROS	A	B	C	K'	D	LATITUD	LONGITUD
T. C. Valladolid - Río Lagartos	0.00	3	0	577	25.9	68.8	1.0	2.0	1.6	0.3	0.2	0.2	0.0	94.7	1.0	4.3	0.102	0.502	21.572257	-88.162550
San Felipe	7.20	1	0	541	26.9	68.7	1.1	1.9	0.7	0.4	0.2	0.1	0.0	95.6	1.1	3.3	0.081	0.509	21.552683	-88.230472

49 CARR: Ramal a Tedzidz

CLAVE: 31600

RUTA: YUC

AÑO: 2023

LUGAR	ESTACION				CLASIFICACION VEHICULAR EN PORCIENTO													COORDENADAS		
	KM	TE	SC	TDPA	M	A	B	C2	C3	T3S2	T3S3	T3S2R4	OTROS	A	B	C	K'	D	LATITUD	LONGITUD
T. C. Mérida - Celestún	0.00																			

YUCATAN

49 CARR: Ramal a Tedzidz

CLAVE: 31600

RUTA: YUC

AÑO: 2023

LUGAR	ESTACION				CLASIFICACION VEHICULAR EN PORCIENTO													COORDENADAS		
	KM	TE	SC	TDPA	M	A	B	C2	C3	T3S2	T3S3	T3S2R4	OTROS	A	B	C	K'	D	LATITUD	LONGITUD
Tedzidz	6.00	1	0	129	41.1	55.8	0.5	1.9	0.1	0.4	0.1	0.1	0.0	96.9	0.5	2.6	0.152	0.509	20.842666	-89.975055

50 CARR: Ramal a Yaxcabá

CLAVE: 31111

RUTA: YUC-289

AÑO: 2023

LUGAR	ESTACION				CLASIFICACION VEHICULAR EN PORCIENTO													COORDENADAS		
	KM	TE	SC	TDPA	M	A	B	C2	C3	T3S2	T3S3	T3S2R4	OTROS	A	B	C	K'	D	LATITUD	LONGITUD
T. C. Mérida - Puerto Juárez	0.00	3	0	698	20.9	72.1	0.4	2.6	1.0	1.7	0.3	1.0	0.0	93.0	0.4	6.6	0.096	0.527	20.696752	-88.811547
Yaxcabá	18.00	1	0	738	23.4	68.9	0.6	2.4	1.5	1.8	0.3	1.1	0.0	92.3	0.6	7.1	0.130	0.512	20.567352	-88.823219

51 CARR: Sinanché - Xitibcanul

CLAVE: 31619

RUTA: YUC

AÑO: 2023

LUGAR	ESTACION				CLASIFICACION VEHICULAR EN PORCIENTO													COORDENADAS		
	KM	TE	SC	TDPA	M	A	B	C2	C3	T3S2	T3S3	T3S2R4	OTROS	A	B	C	K'	D	LATITUD	LONGITUD
Sinanché	0.00	3	0	730	34.5	64.0	0.3	0.3	0.6	0.0	0.2	0.1	0.0	98.5	0.3	1.2	0.082	0.510	21.234334	-89.184411
Xitibcanul	7.00	1	0	628	49.6	46.1	0.7	2.3	1.0	0.3	0.0	0.0	0.0	95.7	0.7	3.6	0.118	0.522	21.351055	-89.172037

52 CARR: Sucilá - Calotmul

CLAVE: 31617

RUTA: YUC

AÑO: 2023

LUGAR	ESTACION				CLASIFICACION VEHICULAR EN PORCIENTO													COORDENADAS		
	KM	TE	SC	TDPA	M	A	B	C2	C3	T3S2	T3S3	T3S2R4	OTROS	A	B	C	K'	D	LATITUD	LONGITUD
Sucilá	0.00																			
X. C. Cansahcab - Tizimin	2.00	3	0	1398	17.6	75.2	1.1	5.1	0.4	0.2	0.1	0.2	0.1	92.8	1.1	6.1	0.101	0.506	21.138022	-88.313563
Calotmul	30.20	1	0	914	35.0	60.4	0.5	3.0	0.7	0.1	0.2	0.1	0.0	95.4	0.5	4.1	0.090	0.503	21.017743	-88.186168

53 CARR: Suma - Izamal

CLAVE: 31081

RUTA: YUC-081

AÑO: 2023

LUGAR	ESTACION				CLASIFICACION VEHICULAR EN PORCIENTO													COORDENADAS		
	KM	TE	SC	TDPA	M	A	B	C2	C3	T3S2	T3S3	T3S2R4	OTROS	A	B	C	K'	D	LATITUD	LONGITUD
Suma	0.00	3	0	830	33.6	62.0	0.8	2.8	0.4	0.2	0.1	0.1	0.0	95.6	0.8	3.6	0.103	0.511	21.082856	-89.139364
Izamal	22.00	1	0	1140	35.2	56.8	0.4	7.0	0.4	0.2	0.0	0.0	0.0	92.0	0.4	7.6	0.101	0.502	20.949936	-89.020637

YUCATAN

54 CARR : Telchac Puerto - Dzilam de Bravo

CLAVE: 31042

RUTA: YUC

AÑO: 2023

LUGAR	ESTACION				CLASIFICACION VEHICULAR EN PORCIENTO											COORDENADAS				
	KM	TE	SC	TDPA	M	A	B	C2	C3	T3S2	T3S3	T3S2R4	OTROS	A	B	C	K'	D	LATITUD	LONGITUD
Telchac Puerto	0.00	3	0	1797	18.0	77.9	0.4	3.0	0.6	0.1	0.0	0.0	0.0	95.9	0.4	3.7	0.135	0.509	21.343522	-89.248104
T. Der. Sinanché	8.00	1	0	1458	32.6	62.0	1.4	2.5	1.2	0.3	0.0	0.0	0.0	94.6	1.4	4.0	0.125	0.504	21.352702	-89.177877
T. Der. Sinanché	8.00	3	0	1192	34.1	59.3	0.3	4.8	0.9	0.2	0.2	0.2	0.0	93.4	0.3	6.3	0.100	0.505	21.352106	-89.164151
Chabihau	15.00	1	0	875	25.8	68.2	0.4	4.3	0.9	0.3	0.1	0.0	0.0	94.0	0.4	5.6	0.152	0.502	21.355118	-89.130477
Chabihau	15.00	3	0	504	14.4	79.6	0.5	4.1	0.9	0.3	0.1	0.1	0.0	94.0	0.5	5.5	0.199	0.509	21.358793	-89.102242
Santa Clara	26.00	1	0	519	13.9	79.8	0.5	4.4	1.1	0.3	0.0	0.0	0.0	93.7	0.5	5.8	0.201	0.509	21.371508	-89.025352
Santa Clara	26.00	3	0	486	21.3	74.4	0.8	2.4	0.6	0.1	0.4	0.0	0.0	95.7	0.8	3.5	0.172	0.500	21.374367	-89.002273
Dzilam de Bravo	39.00	1	0	632	28.0	66.7	0.6	3.8	0.7	0.1	0.1	0.0	0.0	94.7	0.6	4.7	0.129	0.500	21.387548	-88.912090

55 CARR : Thul - Becanchén

CLAVE: 31104

RUTA: YUC-281

AÑO: 2023

LUGAR	ESTACION				CLASIFICACION VEHICULAR EN PORCIENTO											COORDENADAS					
	KM	TE	SC	TDPA	M	A	B	C2	C3	T3S2	T3S3	T3S2R4	OTROS	A	B	C	K'	D	LATITUD	LONGITUD	
T. C. Muna - Felipe Carrillo Puerto	0.00	3	0	279	30.4	55.7	4.1	6.6	1.0	1.3	0.9	0.0	0.0	86.1	4.1	9.8	0.115	0.550	20.085909	-89.099595	
Becanchén	32.00																				

56 CARR : Ticul - Chapab

CLAVE: 31623

RUTA: YUC

AÑO: 2023

LUGAR	ESTACION				CLASIFICACION VEHICULAR EN PORCIENTO											COORDENADAS				
	KM	TE	SC	TDPA	M	A	B	C2	C3	T3S2	T3S3	T3S2R4	OTROS	A	B	C	K'	D	LATITUD	LONGITUD
Ticul	0.00	3	0	1825	34.7	59.9	1.0	2.4	0.6	0.8	0.3	0.2	0.1	94.6	1.0	4.4	0.131	0.524	20.412456	-89.520859
Chapab	8.00	1	0	1908	26.8	69.6	0.9	1.4	0.5	0.6	0.1	0.1	0.0	96.4	0.9	2.7	0.101	0.503	20.455030	-89.461728

57 CARR : Ticul - Dzan

CLAVE: 31621

RUTA: YUC

AÑO: 2023

LUGAR	ESTACION				CLASIFICACION VEHICULAR EN PORCIENTO											COORDENADAS					
	KM	TE	SC	TDPA	M	A	B	C2	C3	T3S2	T3S3	T3S2R4	OTROS	A	B	C	K'	D	LATITUD	LONGITUD	
Ticul	0.00																				
T. Izq. Libramiento de Ticul	2.50	3	0	3599	41.8	53.9	0.4	1.8	0.4	1.0	0.3	0.2	0.2	95.7	0.4	3.9	0.090	0.501	20.393977	-89.506596	
Dzan	7.00	1	0	4393	33.9	60.7	0.4	2.6	0.4	1.3	0.3	0.2	0.2	94.6	0.4	5.0	0.104	0.533	20.390542	-89.482062	

YUCATAN

58 CARR: Tixkokob - Baca

CLAVE: 31010

RUTA: YUC

AÑO: 2023

LUGAR	ESTACION				CLASIFICACION VEHICULAR EN PORCIENTO													COORDENADAS		
	KM	TE	SC	TDPA	M	A	B	C2	C3	T3S2	T3S3	T3S2R4	OTROS	A	B	C	K'	D	LATITUD	LONGITUD
Tixkokob	0.00	3	0	4488	56.9	38.9	0.6	1.6	0.8	0.5	0.3	0.4	0.0	95.8	0.6	3.6	0.081	0.502	21.007572	-89.418119
Baca	15.00	1	0	3342	56.4	40.2	0.6	1.7	0.4	0.4	0.2	0.1	0.0	96.6	0.6	2.8	0.083	0.507	21.096480	-89.398016

59 CARR: Tixkokob - Sotula

CLAVE: 31106

RUTA: YUC

AÑO: 2023

LUGAR	ESTACION				CLASIFICACION VEHICULAR EN PORCIENTO													COORDENADAS		
	KM	TE	SC	TDPA	M	A	B	C2	C3	T3S2	T3S3	T3S2R4	OTROS	A	B	C	K'	D	LATITUD	LONGITUD
Tixkokob	0.00	3	0	2723	58.3	38.6	0.3	1.0	1.2	0.4	0.1	0.1	0.0	96.9	0.3	2.8	0.110	0.509	20.998223	-89.380652
Tahmek	24.00	3	0	1942	29.1	65.8	0.8	3.3	0.7	0.2	0.0	0.1	0.0	94.9	0.8	4.3	0.093	0.522	20.862991	-89.255492
Hocabá	31.00	3	0	834	31.7	60.6	1.9	4.5	1.0	0.2	0.1	0.0	0.0	92.3	1.9	5.8	0.090	0.510	20.810206	-89.239947
Huhí	43.00	1	0	948	33.8	57.9	1.3	6.4	0.3	0.2	0.1	0.0	0.0	91.7	1.3	7.0	0.091	0.505	20.724305	-89.172100
Sotula	65.00	1	0	293	36.6	58.1	1.1	3.0	0.6	0.3	0.1	0.2	0.0	94.7	1.1	4.2	0.095	0.511	20.603258	-89.021039

60 CARR: Tizimín - Yucatán

CLAVE: 31588

RUTA: YUC

AÑO: 2023

LUGAR	ESTACION				CLASIFICACION VEHICULAR EN PORCIENTO													COORDENADAS		
	KM	TE	SC	TDPA	M	A	B	C2	C3	T3S2	T3S3	T3S2R4	OTROS	A	B	C	K'	D	LATITUD	LONGITUD
Tizimín	0.00	3	0	4267	25.5	68.7	1.0	2.3	1.2	0.3	0.2	0.5	0.3	94.2	1.0	4.8	0.080	0.511	21.149586	-88.110404
T. Der. Buenaventura	30.00	3	0	2170	10.6	79.6	2.4	3.3	2.0	0.9	0.3	0.6	0.3	90.2	2.4	7.4	0.089	0.514	21.179647	-87.923709
Yucatán	46.50	1	0	2328	10.0	80.6	2.2	3.2	1.8	0.6	0.2	0.9	0.5	90.6	2.2	7.2	0.080	0.529	21.203496	-87.728071

61 CARR: Yaxché - Sierra Papacal

CLAVE: 31620

RUTA: YUC

AÑO: 2023

LUGAR	ESTACION				CLASIFICACION VEHICULAR EN PORCIENTO													COORDENADAS		
	KM	TE	SC	TDPA	M	A	B	C2	C3	T3S2	T3S3	T3S2R4	OTROS	A	B	C	K'	D	LATITUD	LONGITUD
T. C. Mérida - Progreso	0.00	3	0	6664	20.5	71.4	1.0	5.1	0.5	0.9	0.5	0.1	0.0	91.9	1.0	7.1	0.109	0.510	21.105278	-89.641932
Sierra Papacal	12.00	1	0	2436	23.0	71.2	0.8	3.1	1.5	0.2	0.1	0.1	0.0	94.2	0.8	5.0	0.094	0.516	21.122391	-89.722241

62 CARR: Yobain - Chabihau

CLAVE: 31610

RUTA: YUC

AÑO: 2023

LUGAR	ESTACION				CLASIFICACION VEHICULAR EN PORCIENTO													COORDENADAS		
	KM	TE	SC	TDPA	M	A	B	C2	C3	T3S2	T3S3	T3S2R4	OTROS	A	B	C	K'	D	LATITUD	LONGITUD
T. C. Baca - Dzidzantún	0.00	3	0	630	48.8	48.7	0.3	1.1	0.6	0.4	0.1	0.0	0.0	97.5	0.3	2.2	0.099	0.502	21.239460	-89.116813
Chabihau	12.00	1	0	498	48.6	49.3	0.2	1.0	0.5	0.3	0.1	0.0	0.0	97.9	0.2	1.9	0.121	0.502	21.354540	-89.117231

YUCATAN

63 CARR: Chemax - Cobá

CLAVE:

RUTA: YUC-MEX-180

AÑO: 2023

LUGAR	ESTACION				CLASIFICACION VEHICULAR EN PORCIENTO													COORDENADAS		
	KM	TE	SC	TDPA	M	A	B	C2	C3	T3S2	T3S3	T3S2R4	OTROS	A	B	C	K'	D	LATITUD	LONGITUD
Chemax	0.00	3	0	4845	3.7	86.5	2.4	2.8	1.1	1.5	0.5	1.3	0.2	90.2	2.4	7.4	0.123	0.501	20.656523	-87.954369
Lim. Edos. Term. Yucatán Ppia. Q Roo.	25.00																			
Cobá	30.90	1	0	4128	4.3	86.5	2.3	2.6	0.9	1.5	0.5	1.2	0.2	90.8	2.3	6.9	0.147	0.504	20.509804	-87.721977

64 CARR: Progreso - Celestún

CLAVE: 31040

RUTA: MEX-YUC

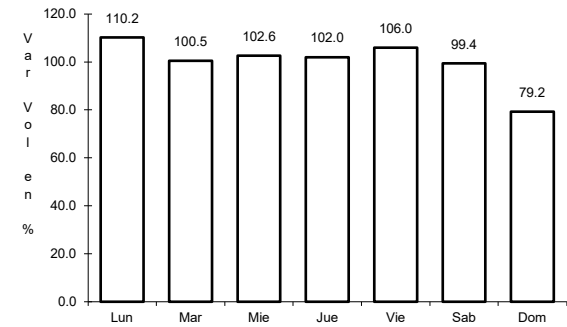
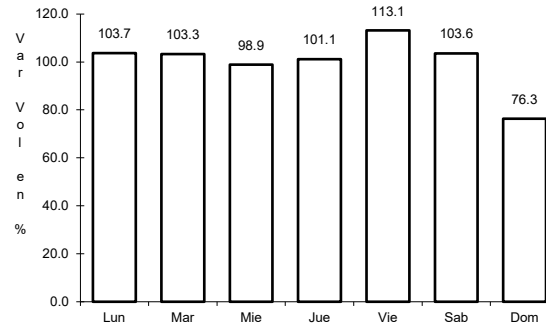
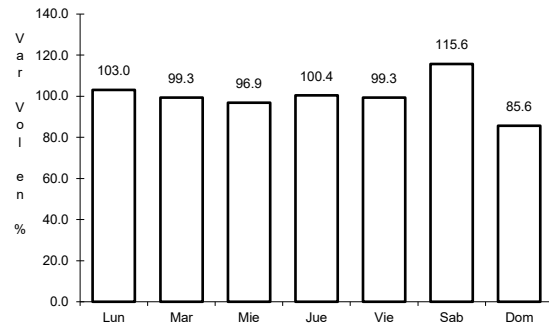
AÑO: 2023

LUGAR	ESTACION				CLASIFICACION VEHICULAR EN PORCIENTO													COORDENADAS		
	KM	TE	SC	TDPA	M	A	B	C2	C3	T3S2	T3S3	T3S2R4	OTROS	A	B	C	K'	D	LATITUD	LONGITUD
T. C. Mérida - Progreso	0.00	3	1	4998	23.9	72.3	0.5	2.6	0.5	0.2	0.0	0.0	0.0	96.2	0.5	3.3	0.083	0.503	21.274372	-89.692673
T. C. Mérida - Progreso	0.00	3	2	4937	22.9	72.9	0.4	2.8	0.6	0.2	0.1	0.1	0.0	95.8	0.4	3.8	0.101	0.503	21.274381	-89.692597
Yucalpetén	6.00	3	0	9029	11.0	86.2	0.2	1.3	0.2	1.0	0.1	0.0	0.0	97.2	0.2	2.6	0.072	0.506	21.274548	-89.725710
Celestún	80.00																			

1 CARR: Campeche - Mérida

CLAVE: 00066

RUTA: MEX-180



Km: 0.00 Tipo: 3 Sent: 1

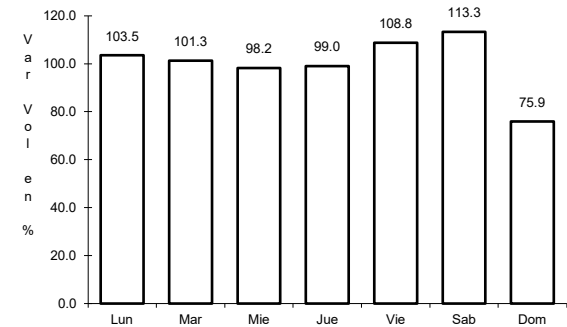
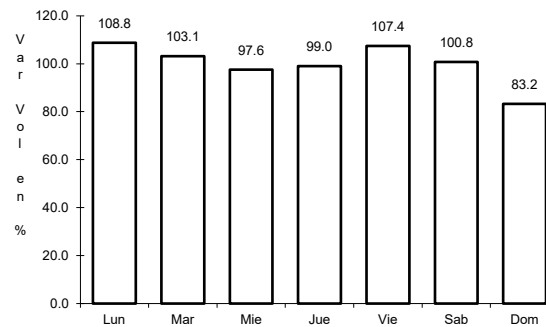
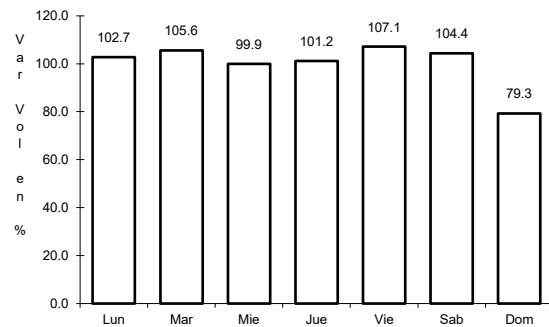
Km: 0.00 Tipo: 3 Sent: 2

Km: 159.00 Tipo: 1 Sent: 1

2 CARR: Campeche - Umán

CLAVE: 00164

RUTA: MEX-261



Km: 7.00 Tipo: 1 Sent: 0

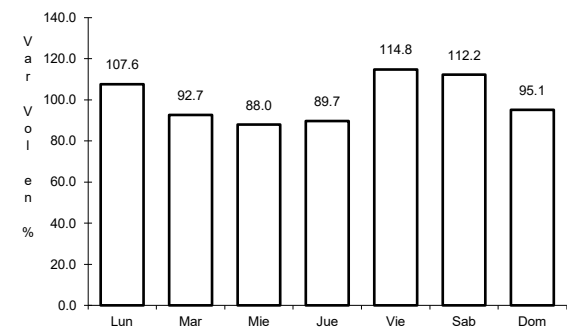
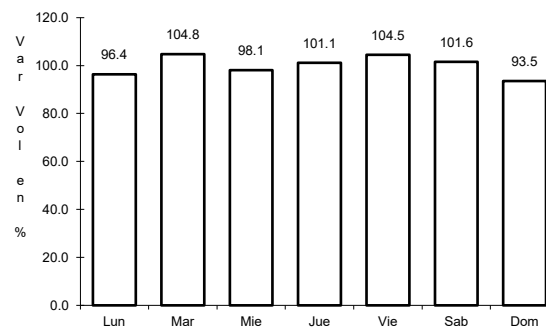
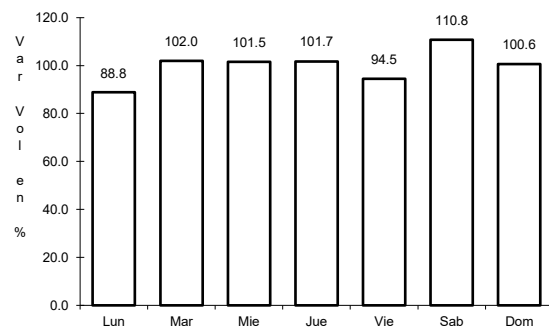
Km: 117.88 Tipo: 3 Sent: 0

Km: 230.83 Tipo: 1 Sent: 0

3 CARR: Cansahcab - Tizimín

CLAVE: 31014

RUTA: MEX-176



Km: 0.00 Tipo: 3 Sent: 0

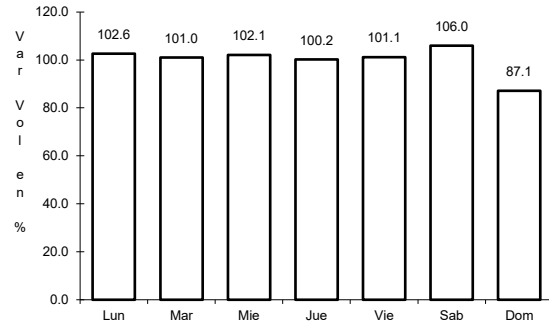
Km: 32.92 Tipo: 3 Sent: 0

Km: 99.14 Tipo: 1 Sent: 0

4 CARR: Conkal - Puerto Chicxulub

CLAVE: 31004

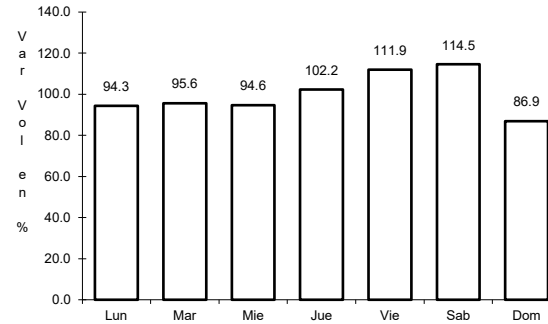
RUTA: MEX-176



Km: 0.00

Tipo: 3

Sent: 0



Km: 27.00

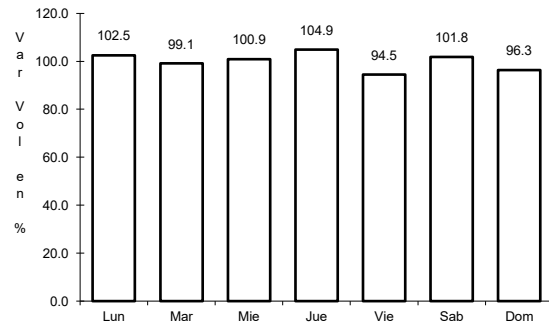
Tipo: 1

Sent: 0

5 CARR: Dzitbalché - Ent. San Bernardo

CLAVE: 00162

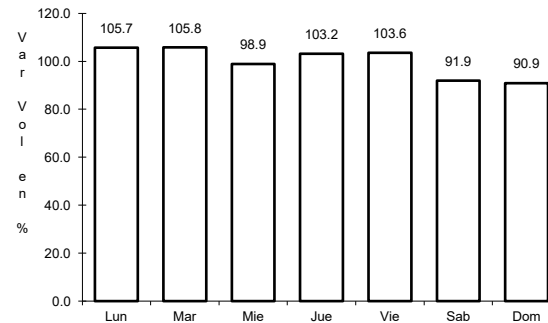
RUTA: MEX-180



Km: 12.33

Tipo: 1

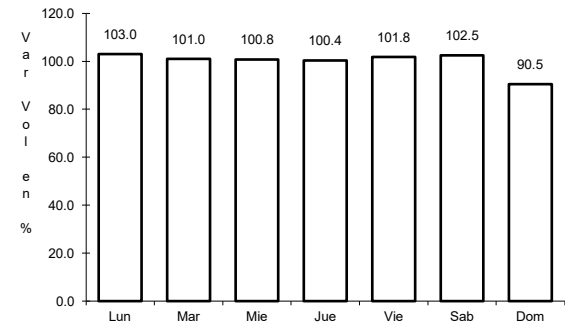
Sent: 0



Km: 21.08

Tipo: 1

Sent: 0



Km: 40.36

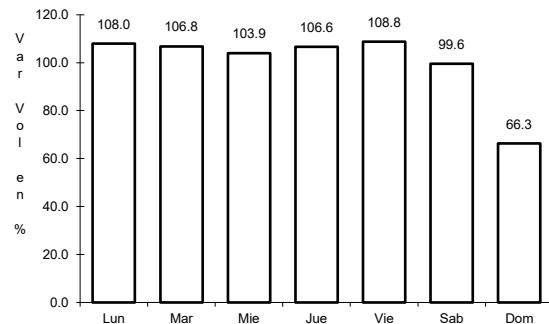
Tipo: 3

Sent: 0

6 CARR: Ent. Poxilá - Mérida

CLAVE: 31003

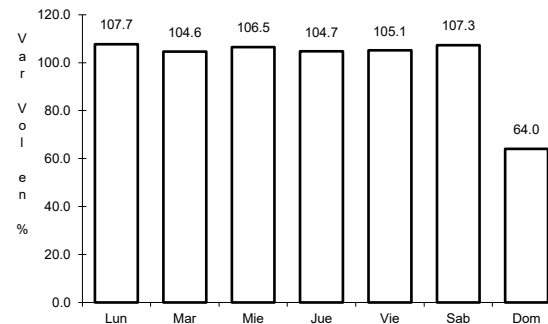
RUTA: MEX-180



Km: 9.46

Tipo: 1

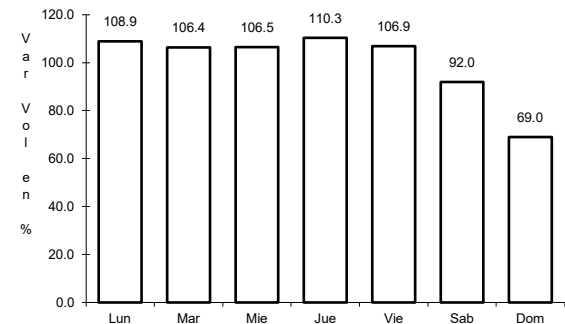
Sent: 0



Km: 25.70

Tipo: 1

Sent: 1



Km: 25.70

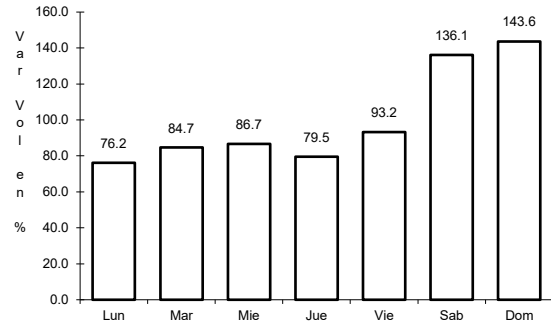
Tipo: 1

Sent: 2

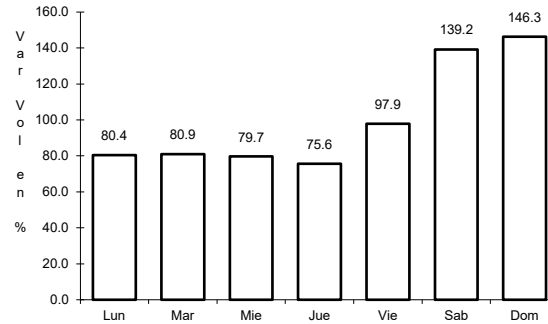
7 CARR: Hunucmá - Sisal

CLAVE: 31021

ruta: MEX-281



Km: 0.00 Tipo: 3 Sent: 0

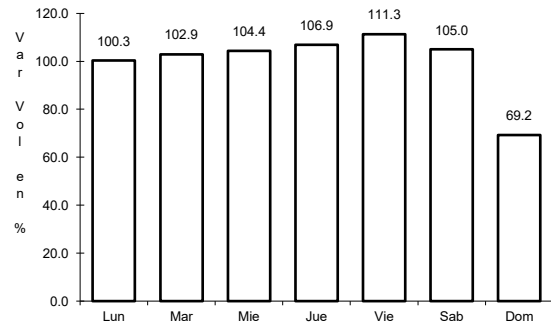


Km: 23.20 Tipo: 1 Sent: 0

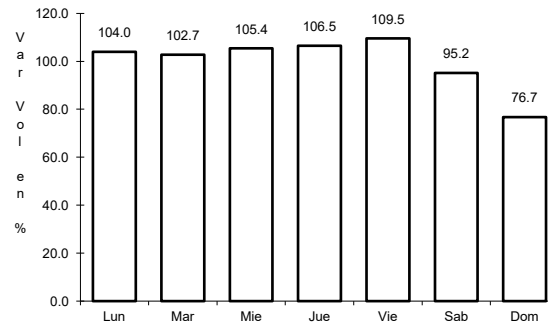
8 CARR: Libramiento Conkal - Mococho - Baca

CLAVE:

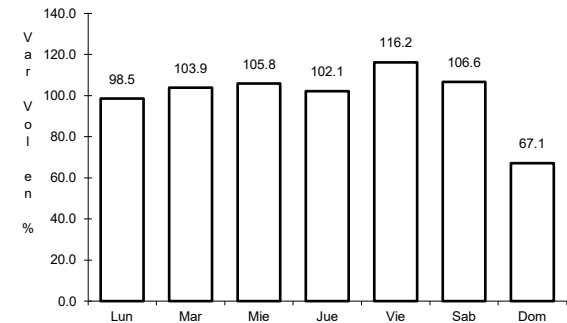
ruta: MEX-176



Km: 4.40 Tipo: 3 Sent: 1



Km: 4.40 Tipo: 3 Sent: 2

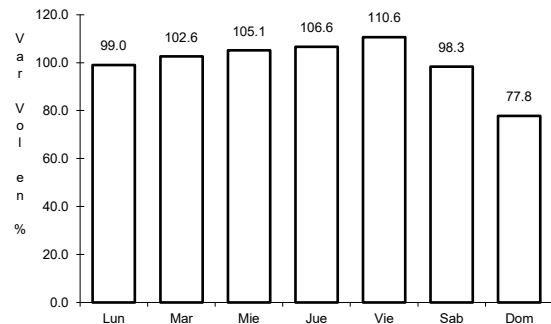


Km: 24.41 Tipo: 1 Sent: 1

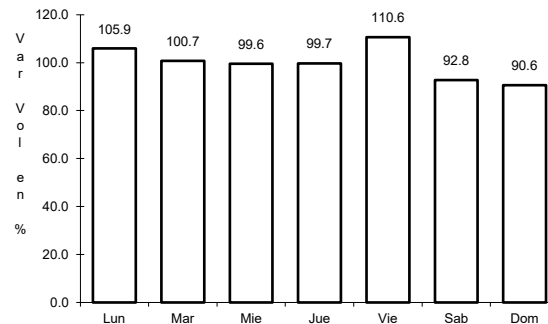
9 CARR: Libramiento de Conkal

CLAVE:

ruta: MEX



Km: 0.00 Tipo: 3 Sent: 0

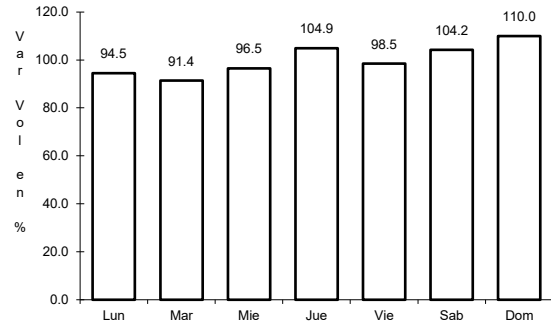


Km: 14.00 Tipo: 1 Sent: 0

10 CARR: Libramiento de Progreso

CLAVE: 31631

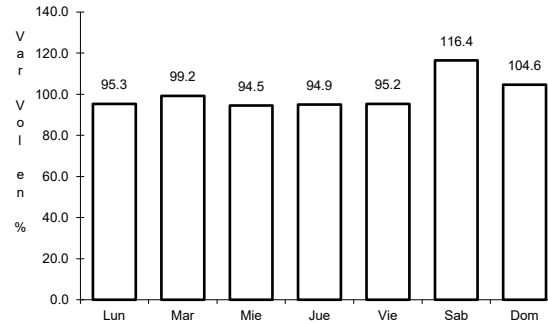
RUTA: MEX-261



Km: 0.00

Tipo: 3

Sent: 0



Km: 6.50

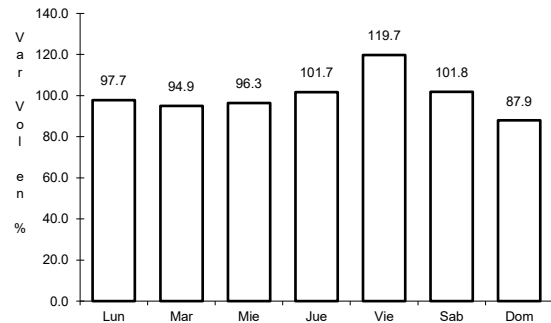
Tipo: 1

Sent: 0

11 CARR: Libramiento de Tahmek - Hoctun - Xocchel

CLAVE:

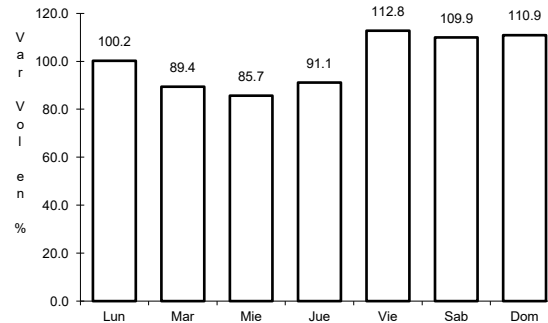
RUTA: MEX-180



Km: 42.00

Tipo: 3

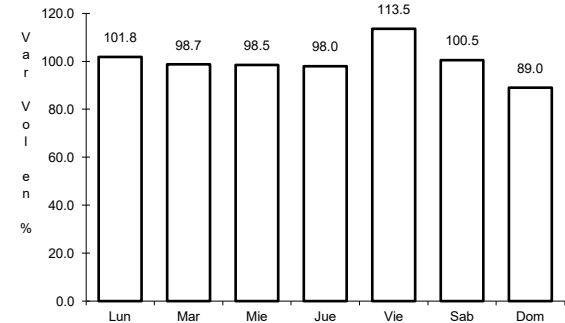
Sent: 1



Km: 42.00

Tipo: 3

Sent: 2



Km: 48.30

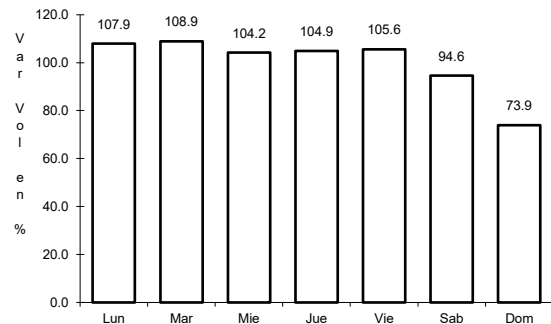
Tipo: 3

Sent: 1

12 CARR: Mérida - Celestún

CLAVE: 31025

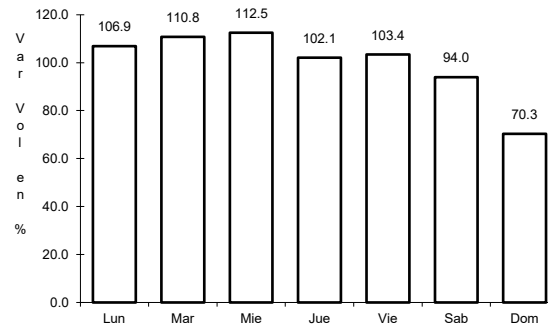
RUTA: MEX-281



Km: 0.00

Tipo: 3

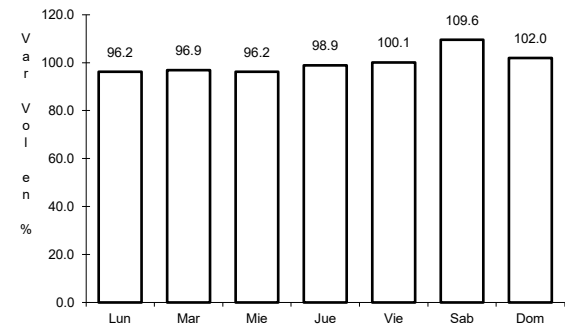
Sent: 1



Km: 0.00

Tipo: 3

Sent: 2



Km: 40.00

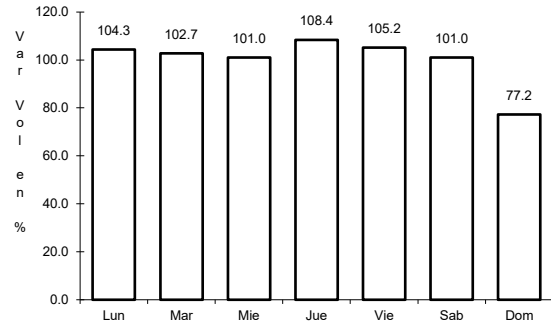
Tipo: 3

Sent: 0

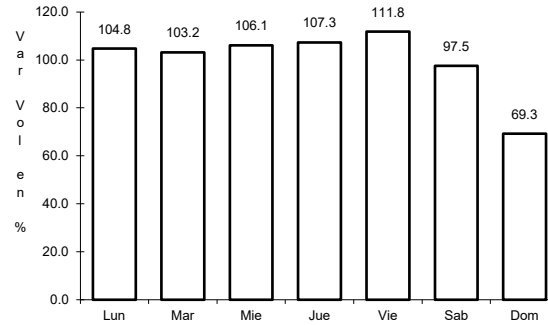
13 CARR: Mérida - Dzilam de Bravo

CLAVE: 31001

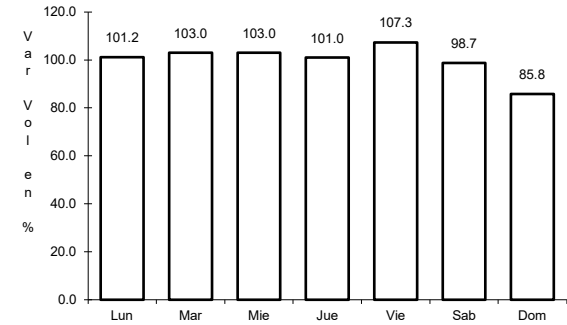
RUTA: MEX-176



Km: 5.90 Tipo: 1 Sent: 1



Km: 5.90 Tipo: 1 Sent: 2

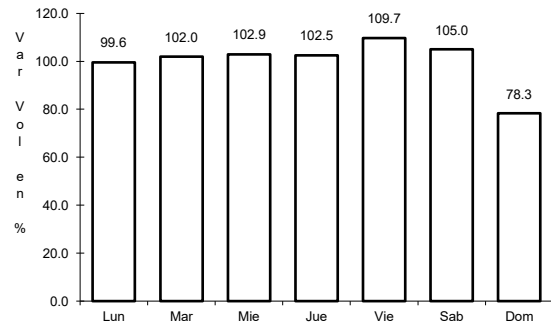


Km: 105.00 Tipo: 1 Sent: 0

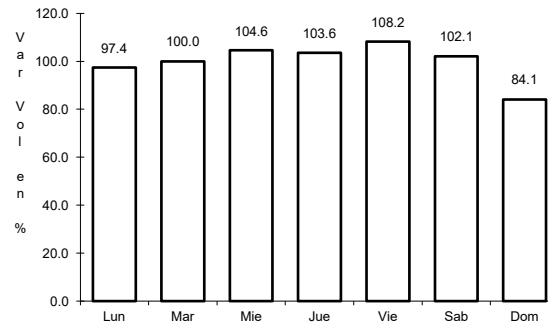
14 CARR: Mérida - Progreso

CLAVE: 31091

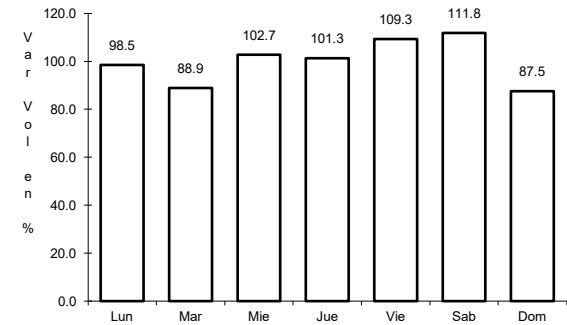
RUTA: MEX-261



Km: 5.40 Tipo: 1 Sent: 1



Km: 5.40 Tipo: 1 Sent: 2

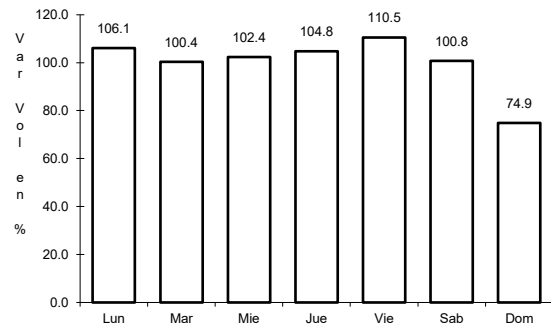


Km: 35.04 Tipo: 1 Sent: 1

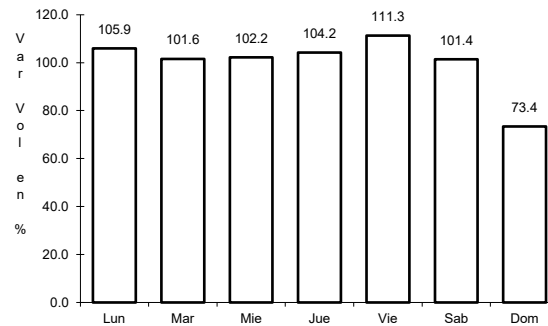
15 CARR: Mérida - Puerto Juárez

CLAVE: 00067

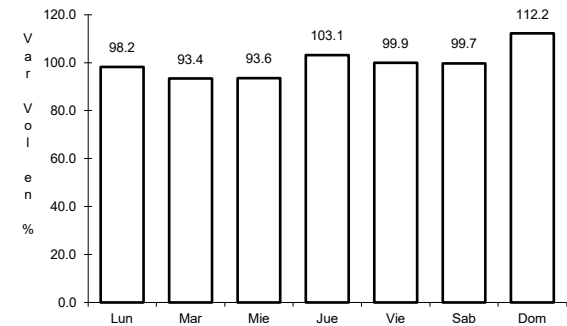
RUTA: MEX-180



Km: 5.60 Tipo: 1 Sent: 1



Km: 5.60 Tipo: 1 Sent: 2

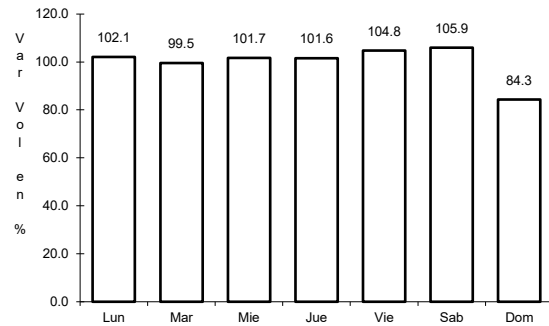


Km: 302.50 Tipo: 1 Sent: 0

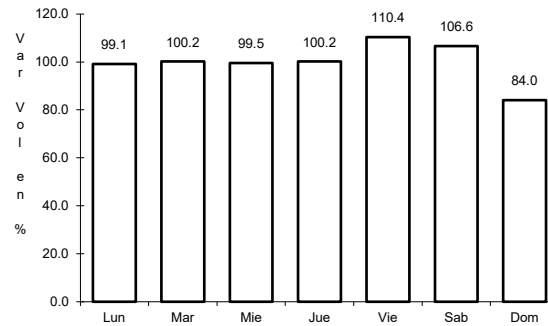
16 CARR: Mérida - Tekanto

CLAVE: 31587

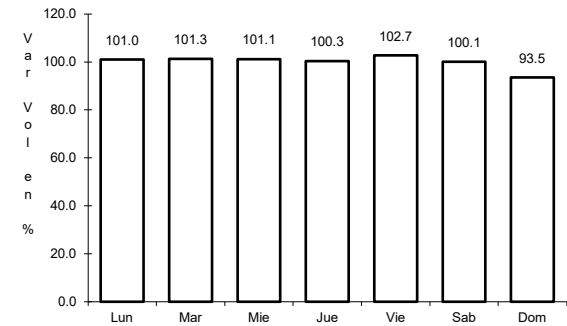
ruta: MEX-180



Km: 5.70 Tipo: 1 Sent: 0



Km: 21.00 Tipo: 1 Sent: 0

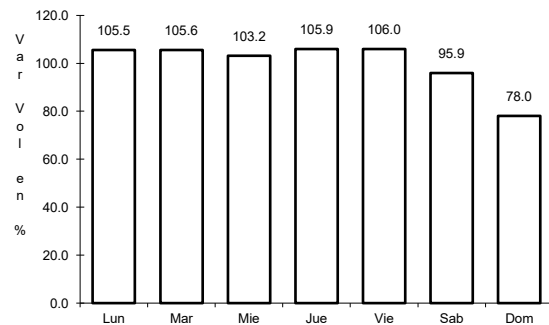


Km: 51.00 Tipo: 1 Sent: 0

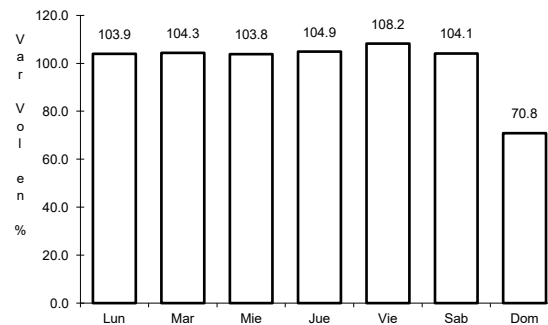
17 CARR: Mérida - Tetiz

CLAVE: 31610

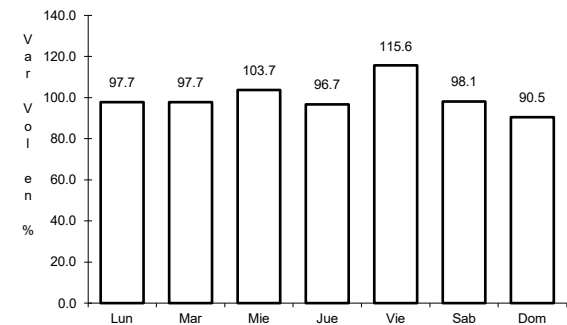
ruta: MEX-281



Km: 0.00 Tipo: 3 Sent: 0



Km: 17.98 Tipo: 1 Sent: 0

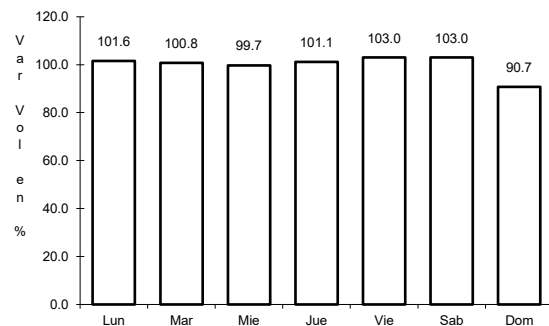


Km: 24.40 Tipo: 1 Sent: 0

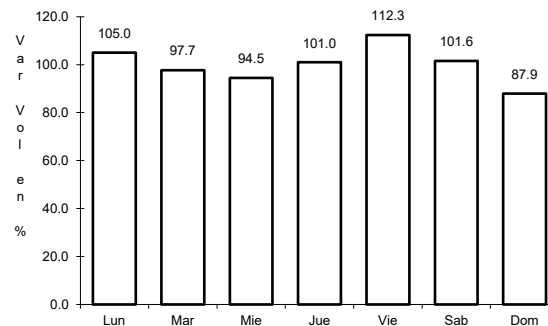
18 CARR: Muna - Felipe Carrillo Puerto

CLAVE: 00148

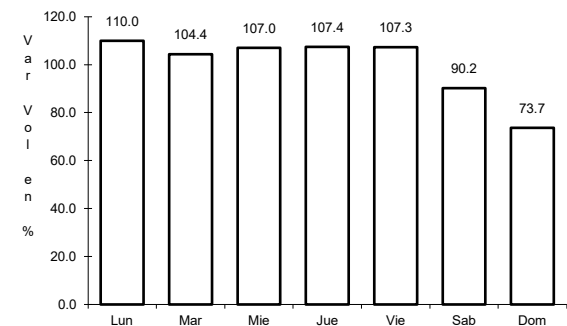
ruta: MEX-184



Km: 0.00 Tipo: 3 Sent: 0



Km: 109.60 Tipo: 3 Sent: 0

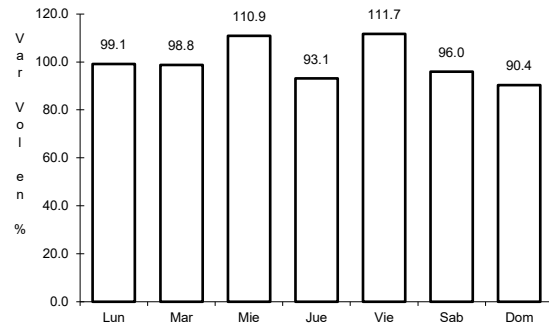


Km: 216.97 Tipo: 1 Sent: 0

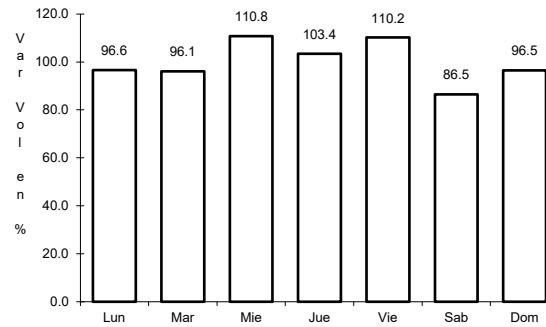
19 CARR: Ramal a Panabá

CLAVE: 31609

RUTA: MEX-295



Km: 0.00 Tipo: 3 Sent: 0

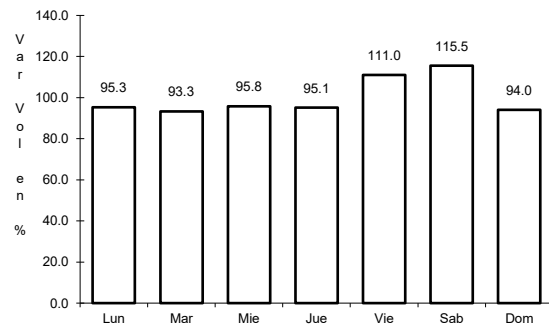


Km: 18.00 Tipo: 1 Sent: 0

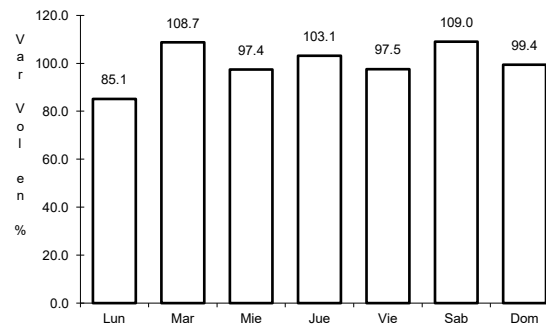
20 CARR: Teya -Peto

CLAVE: 31042

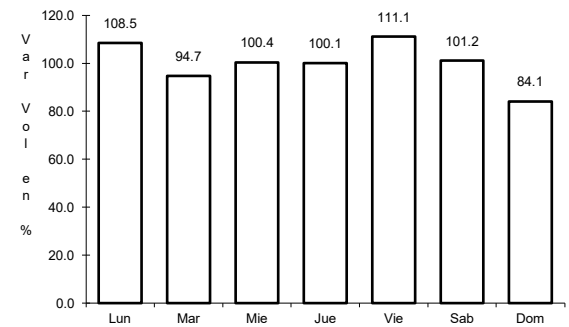
RUTA: MEX-184



Km: 3.80 Tipo: 3 Sent: 1



Km: 3.80 Tipo: 3 Sent: 2

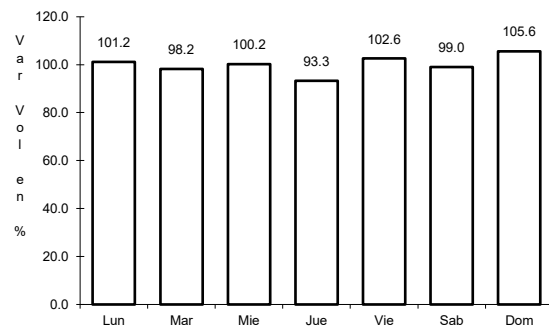


Km: 120.70 Tipo: 1 Sent: 0

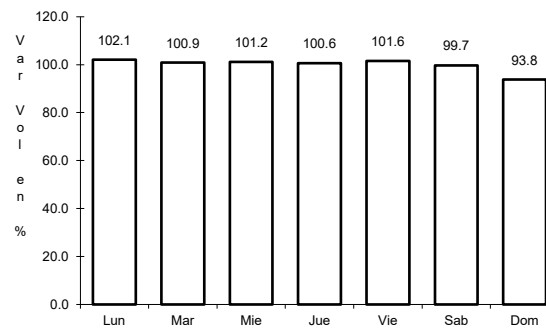
21 CARR: Tzacab - Santa Rosa

CLAVE: 31017

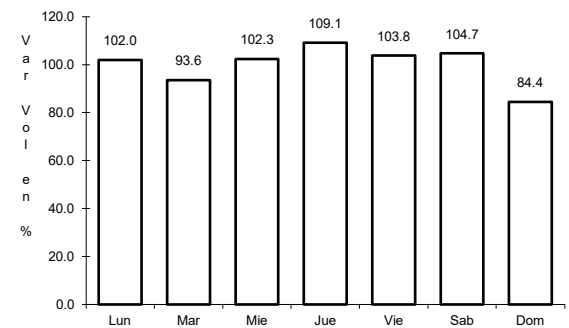
RUTA: MEX



Km: 0.00 Tipo: 3 Sent: 0



Km: 16.00 Tipo: 3 Sent: 0

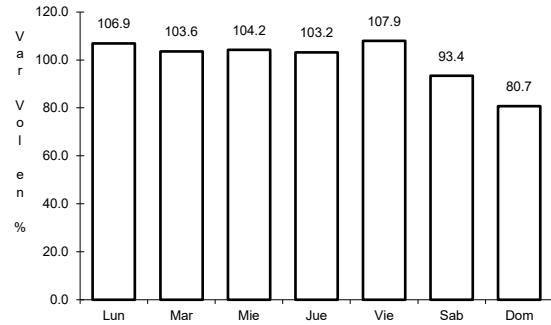


Km: 34.50 Tipo: 1 Sent: 0

22 CARR: Valladolid - Felipe Carrillo Puerto

CLAVE: 00010

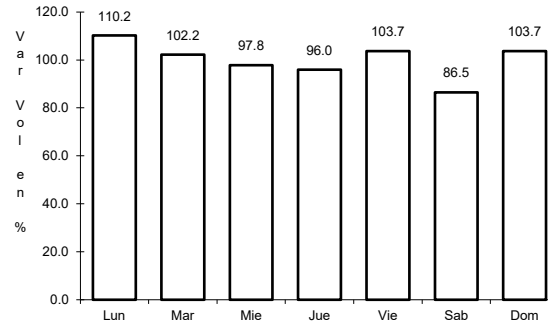
ruta: MEX-295



Km: 0.00

Tipo: 3

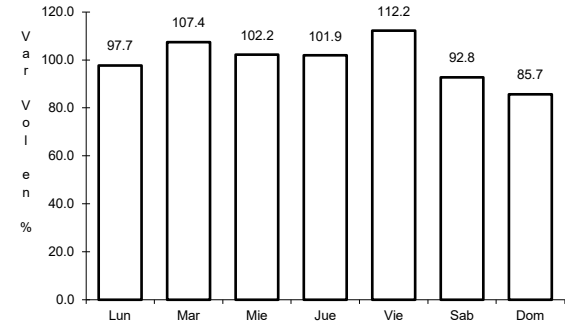
Sent: 0



Km: 99.00

Tipo: 1

Sent: 0



Km: 147.70

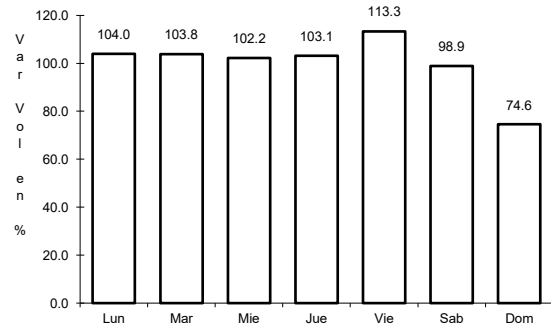
Tipo: 1

Sent: 0

23 CARR: Valladolid - Río Lagartos

CLAVE: 31035

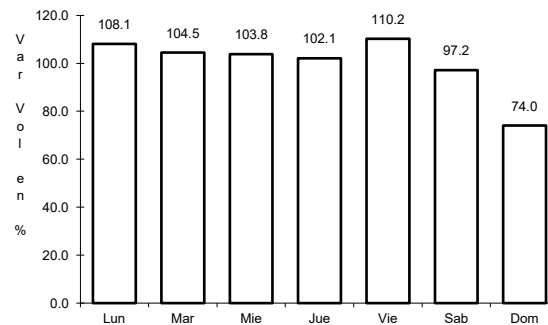
ruta: MEX-295



Km: 0.00

Tipo: 3

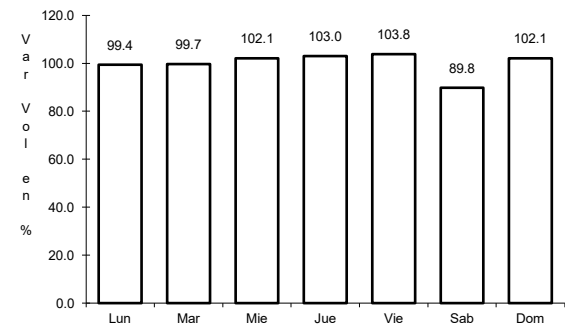
Sent: 1



Km: 0.00

Tipo: 3

Sent: 2



Km: 79.90

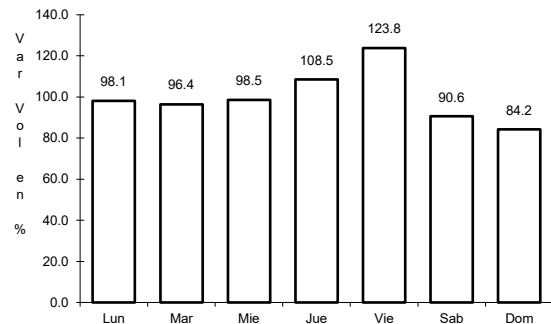
Tipo: 1

Sent: 0

24 CARR: Mérida - Cancún (Cuota)

CLAVE: 00071

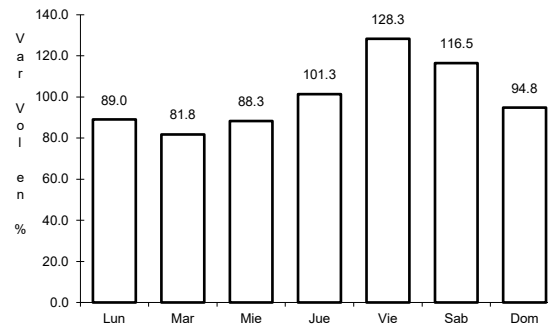
ruta: MEX-180D



Km: 115.34

Tipo: 1

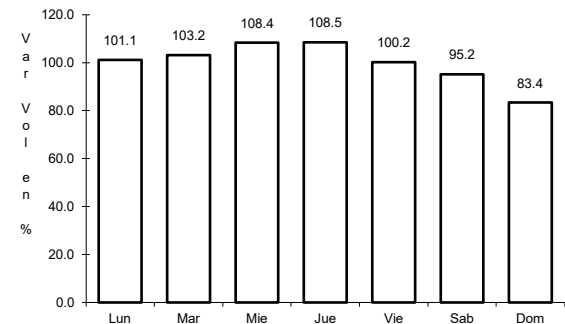
Sent: 1



Km: 115.34

Tipo: 1

Sent: 2



Km: 307.80

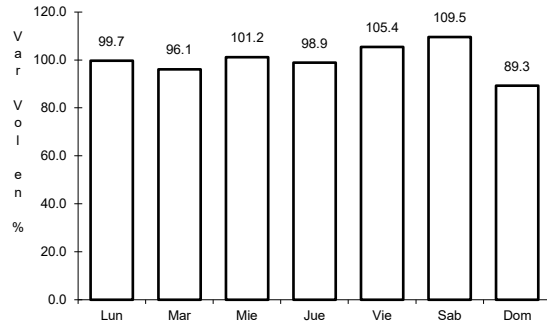
Tipo: 1

Sent: 0

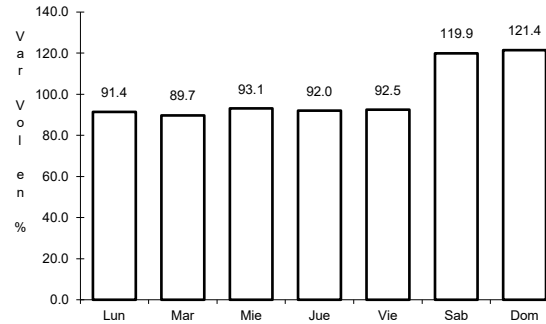
25 CARR: Acanceh - Estación Polabán

CLAVE: 31615

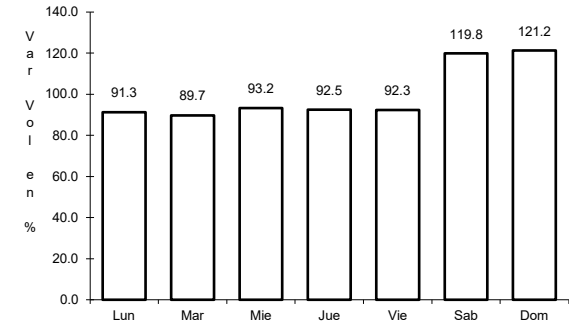
RUTA: YUC



Km: 0.00 Tipo: 3 Sent: 0



Km: 20.00 Tipo: 3 Sent: 0

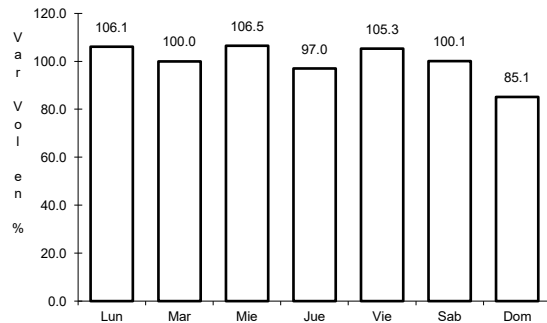


Km: 24.40 Tipo: 1 Sent: 0

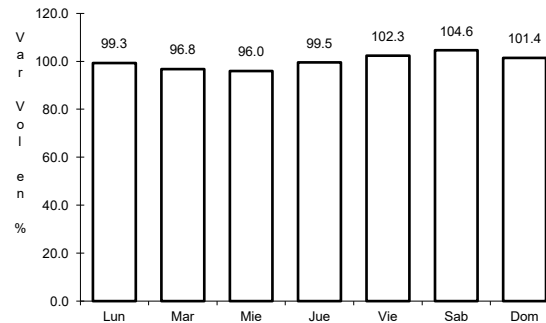
26 CARR: Baca - Dzidzantún

CLAVE: 31591

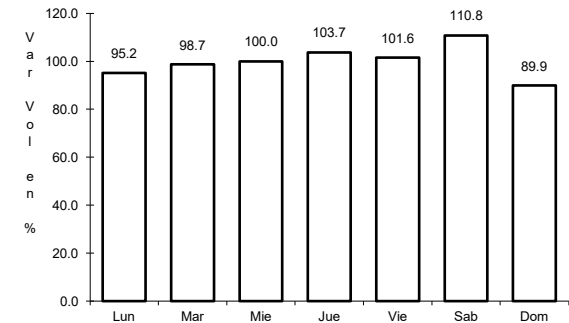
RUTA: YUC



Km: 0.00 Tipo: 3 Sent: 0



Km: 19.10 Tipo: 3 Sent: 0

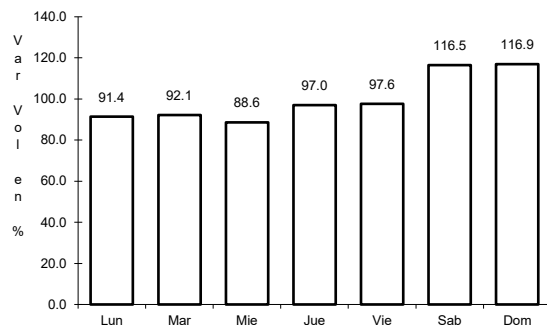


Km: 43.00 Tipo: 1 Sent: 0

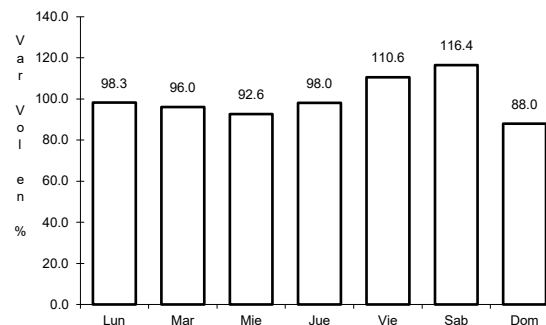
27 CARR: Citilcum - Tixkochoh

CLAVE: 31064

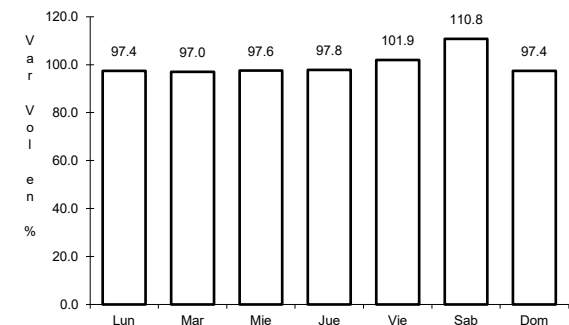
RUTA: YUC



Km: 0.00 Tipo: 3 Sent: 0



Km: 7.00 Tipo: 1 Sent: 0

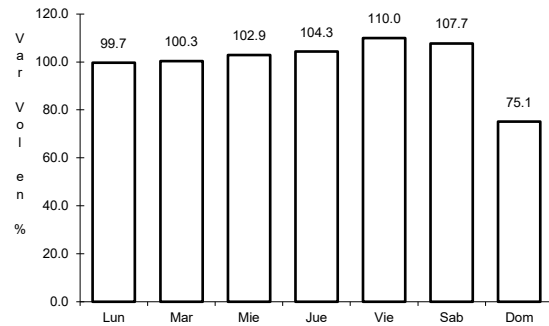


Km: 10.00 Tipo: 1 Sent: 0

28 CARR: Dzemul - Xtampú

CLAVE: 31608

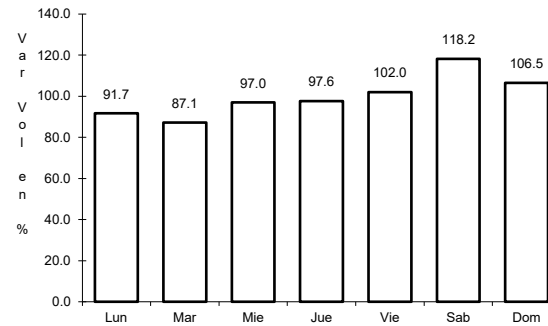
RUTA: YUC



Km: 0.00

Tipo: 3

Sent: 0



Km: 10.00

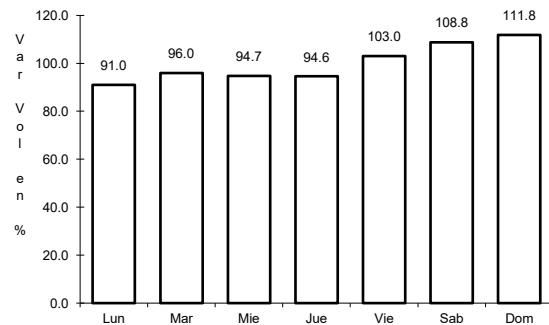
Tipo: 1

Sent: 0

29 CARR: Dzidzantún - Santa Clara

CLAVE: 31592

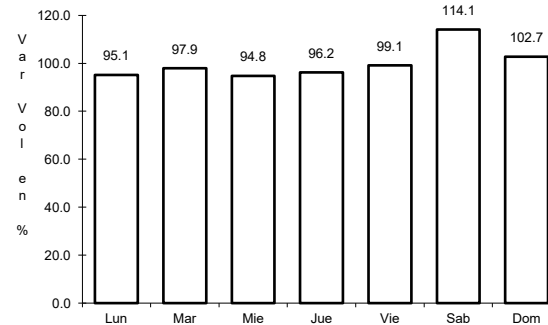
RUTA: YUC



Km: 0.00

Tipo: 3

Sent: 0



Km: 14.00

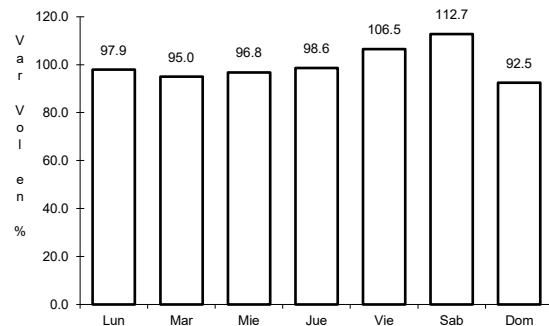
Tipo: 1

Sent: 0

30 CARR: Hochtún - Cenotillo

CLAVE: 31011

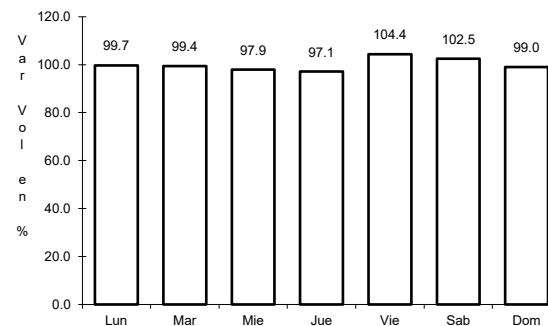
RUTA: YUC-011



Km: 0.00

Tipo: 3

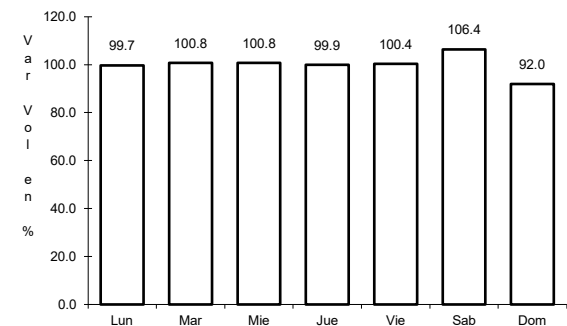
Sent: 0



Km: 24.00

Tipo: 3

Sent: 0



Km: 70.90

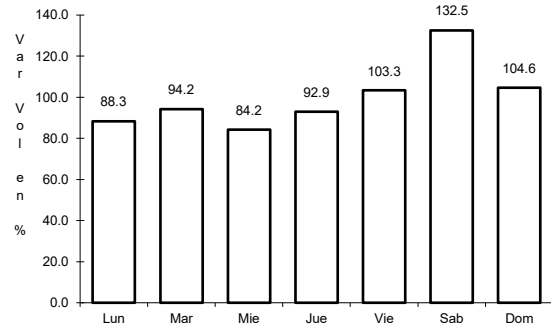
Tipo: 1

Sent: 0

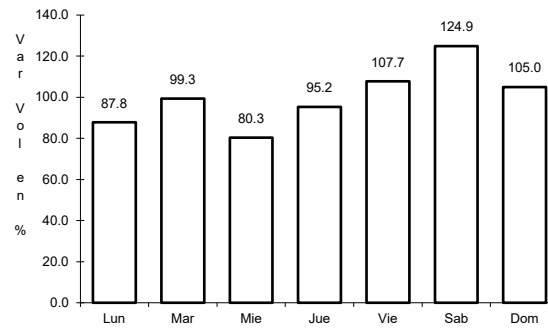
31 CARR: Holcá - Sotuta

CLAVE: 31626

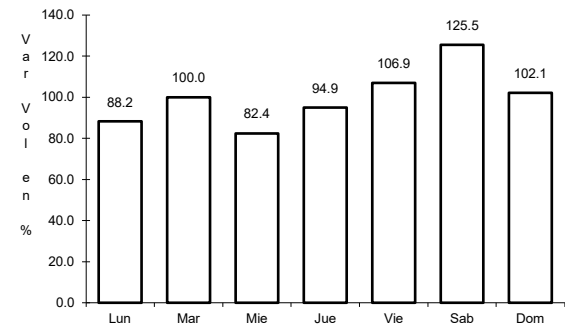
RUTA: YUC



Km: 0.00 Tipo: 3 Sent: 0



Km: 10.00 Tipo: 3 Sent: 0

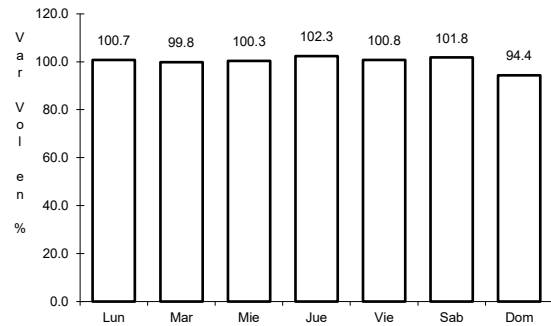


Km: 20.00 Tipo: 1 Sent: 0

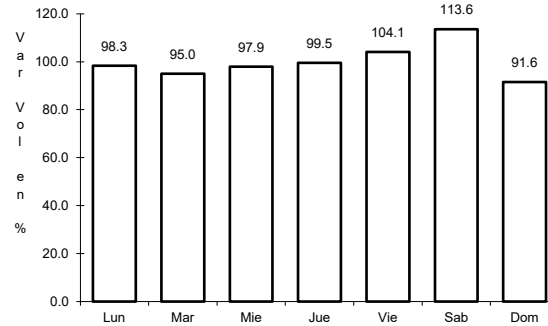
32 CARR: Hunucmá - Umán

CLAVE: 31610

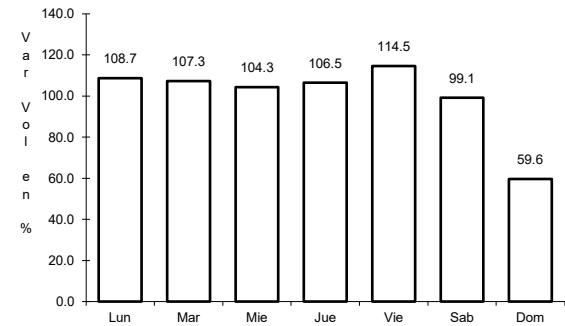
RUTA: YUC



Km: 0.00 Tipo: 3 Sent: 0



Km: 16.16 Tipo: 1 Sent: 0

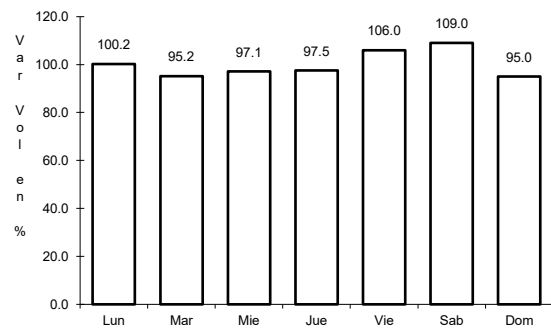


Km: 22.00 Tipo: 1 Sent: 0

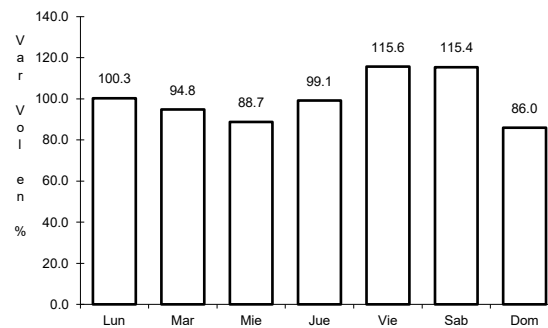
33 CARR: Izamal - Dzilam González

CLAVE: 31605

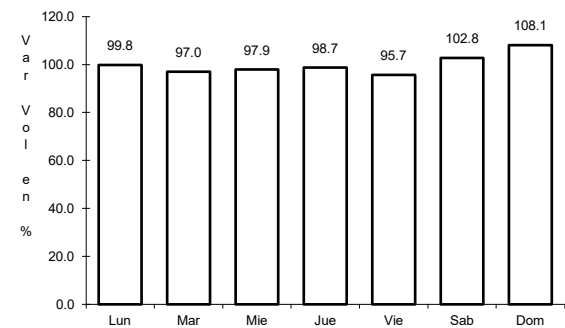
RUTA: YUC



Km: 0.00 Tipo: 3 Sent: 0



Km: 30.00 Tipo: 1 Sent: 0

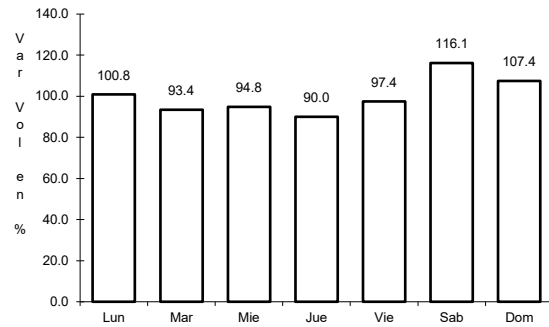


Km: 43.00 Tipo: 1 Sent: 0

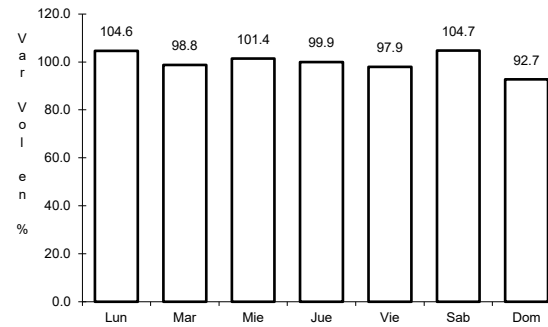
34 CARR: Kantunil - Izamal

CLAVE: 31012

RUTA: YUC



Km: 0.00 Tipo: 3 Sent: 0

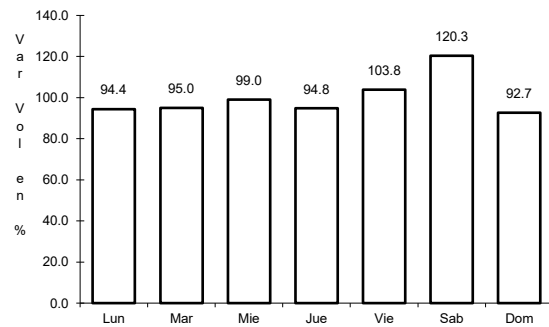


Km: 17.80 Tipo: 1 Sent: 0

35 CARR: Kinchil - Umán

CLAVE: 31009

RUTA: YUC

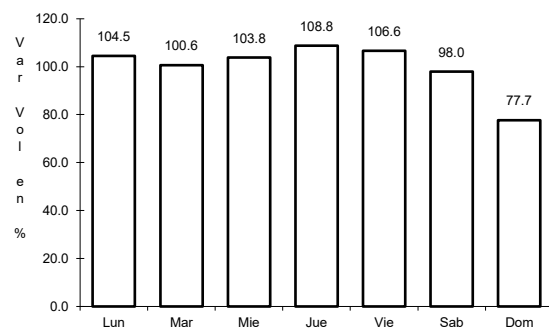


Km: 0.00 Tipo: 3 Sent: 0

36 CARR: Libramiento de Peto

CLAVE:

RUTA: YUC-018

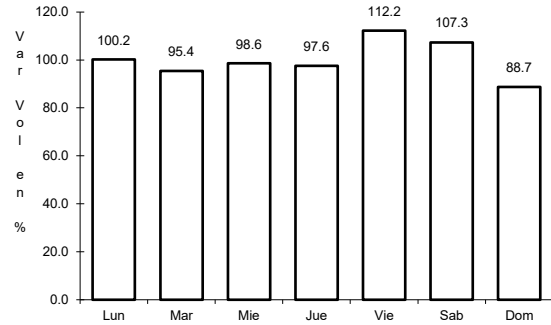


Km: 0.00 Tipo: 3 Sent: 0

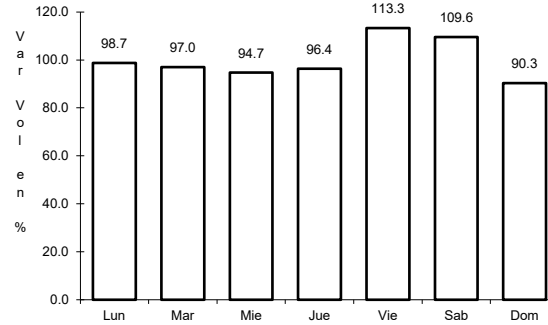
37 CARR: Libramiento Norte de Motul

CLAVE: 31610

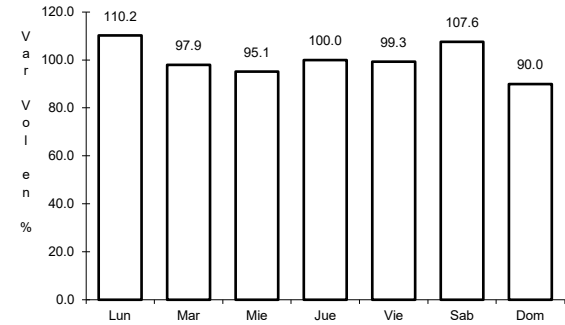
RUTA: YUC



Km: 0.00 Tipo: 3 Sent: 0



Km: 3.16 Tipo: 3 Sent: 0

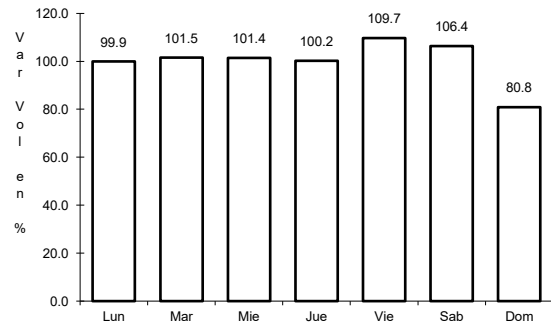


Km: 6.53 Tipo: 1 Sent: 0

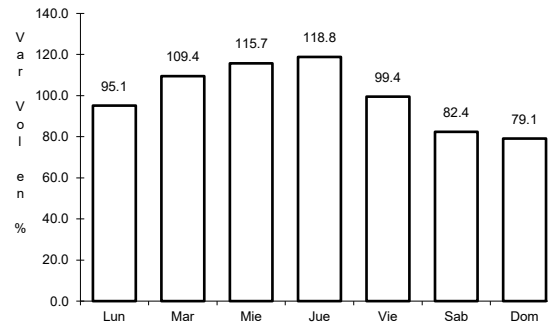
38 CARR: Mérida - Acanceh

CLAVE: 31023

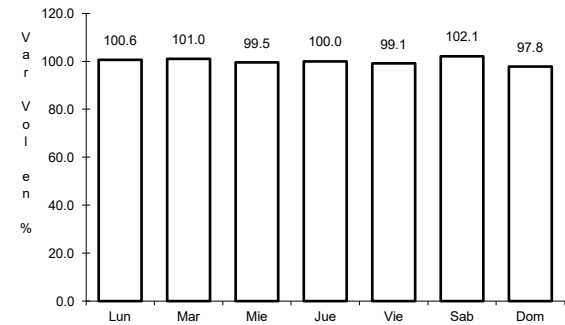
RUTA: YUC



Km: 0.00 Tipo: 3 Sent: 0



Km: 11.00 Tipo: 3 Sent: 0

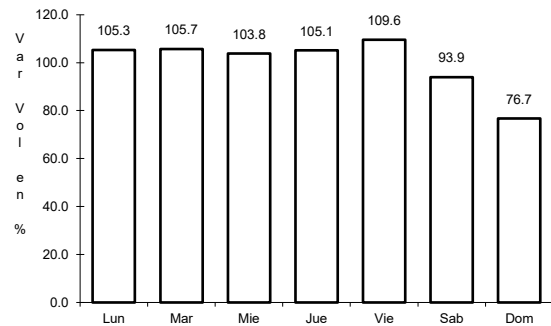


Km: 26.00 Tipo: 1 Sent: 0

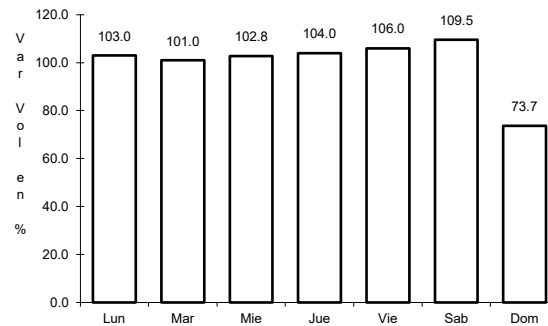
39 CARR: Mérida - Oxkutzcab

CLAVE: 31018

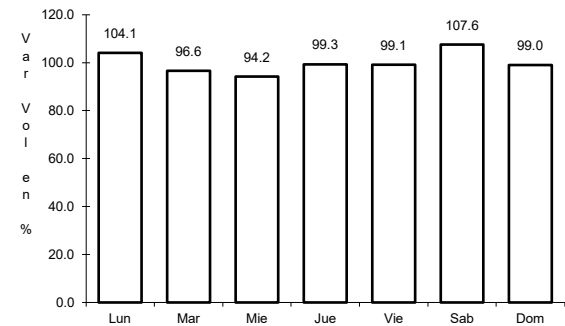
RUTA: YUC-018



Km: 0.00 Tipo: 3 Sent: 1



Km: 0.00 Tipo: 3 Sent: 2

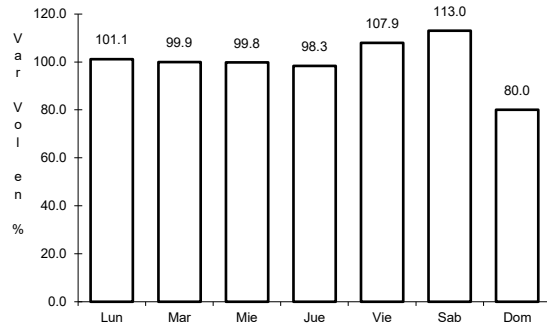


Km: 109.30 Tipo: 1 Sent: 0

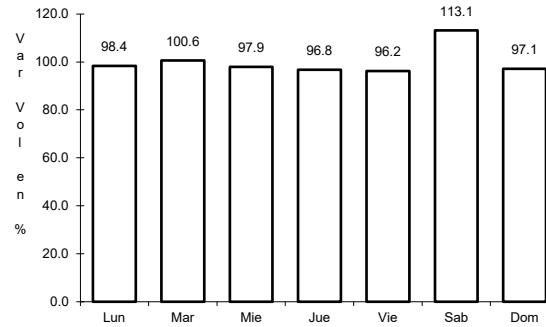
40 CARR: Mérida - Timucuy

CLAVE: 31024

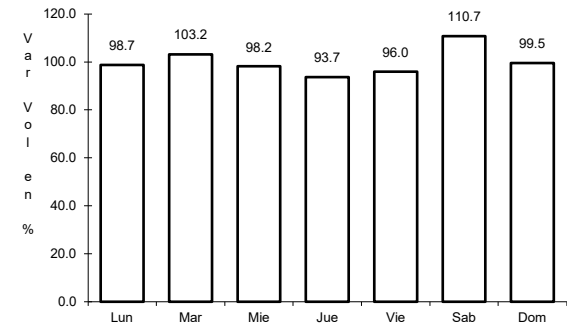
ruta: YUC



Km: 0.00 Tipo: 3 Sent: 0



Km: 15.10 Tipo: 1 Sent: 0

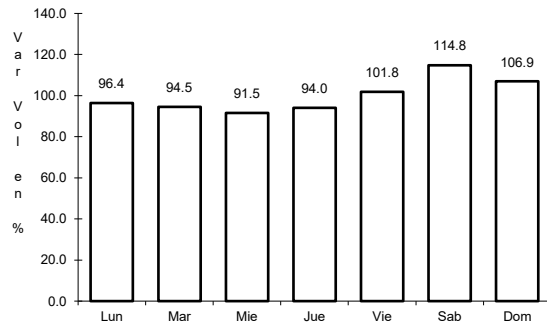


Km: 18.65 Tipo: 1 Sent: 0

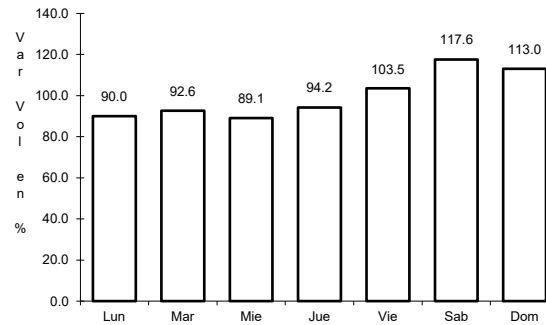
41 CARR: Motul - Puerto Telchac

CLAVE: 31006

ruta: YUC-172



Km: 0.00 Tipo: 3 Sent: 0

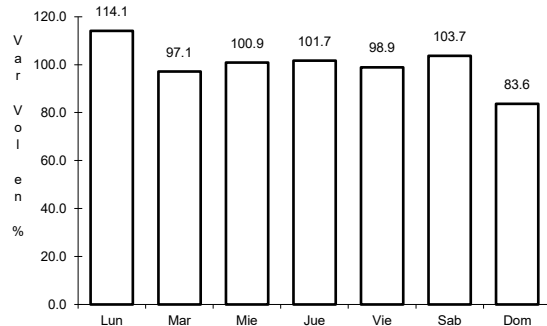


Km: 12.00 Tipo: 3 Sent: 0

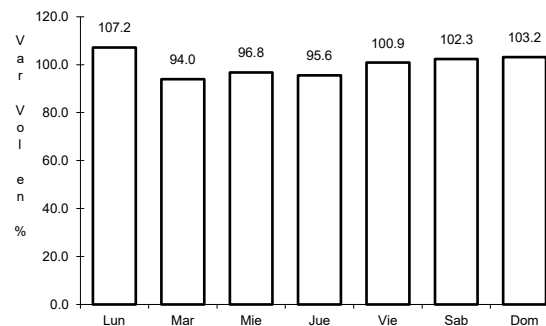
42 CARR: Muna - Maxcanú

CLAVE: 31053

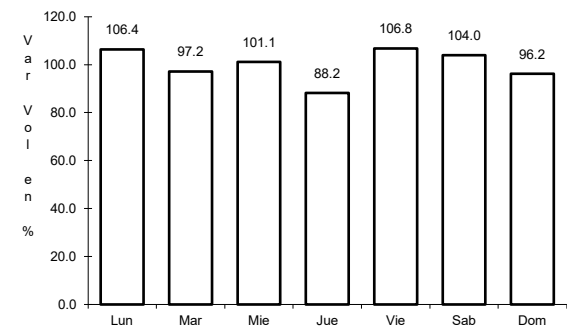
ruta: YUC



Km: 0.00 Tipo: 3 Sent: 0



Km: 17.00 Tipo: 3 Sent: 0

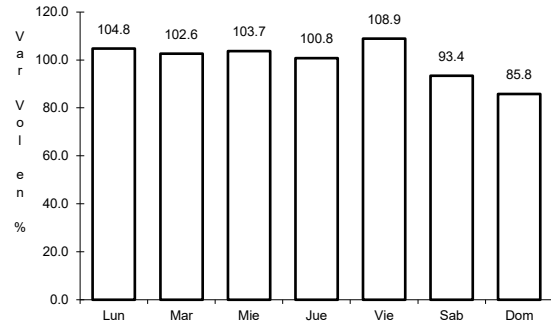


Km: 31.00 Tipo: 1 Sent: 0

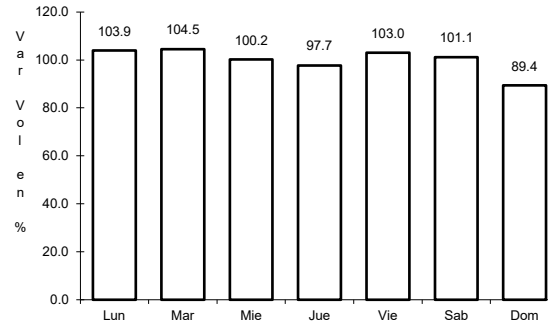
43 CARR: Oxkutzcab - Xul

CLAVE: 31051

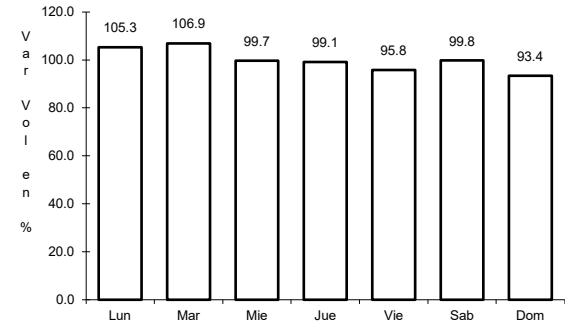
RUTA: YUC-031



Km: 0.00 Tipo: 3 Sent: 0



Km: 10.00 Tipo: 3 Sent: 0

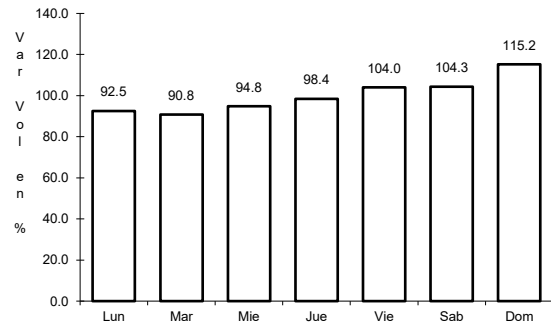


Km: 25.00 Tipo: 1 Sent: 0

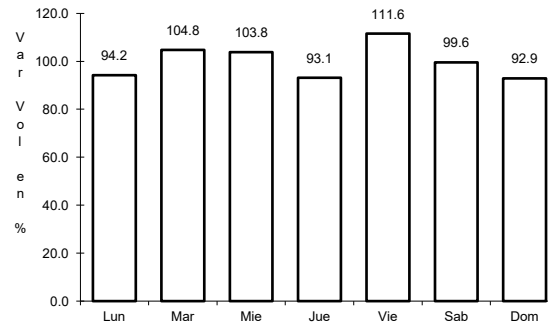
44 CARR: Pisté - Dzitás

CLAVE: 31013

RUTA: YUC-013



Km: 0.00 Tipo: 3 Sent: 0

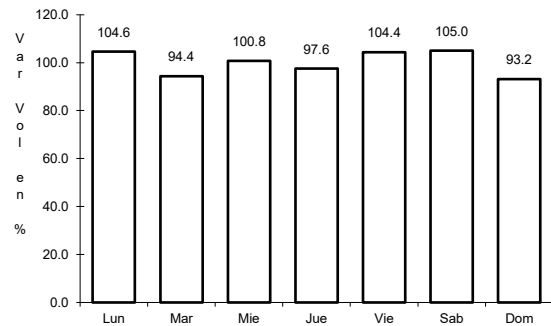


Km: 18.00 Tipo: 1 Sent: 0

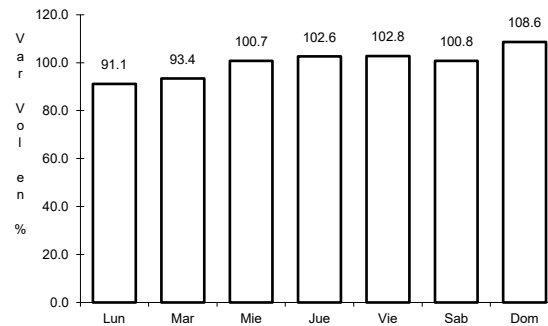
45 CARR: Progreso - Telchac Puerto

CLAVE: 31616

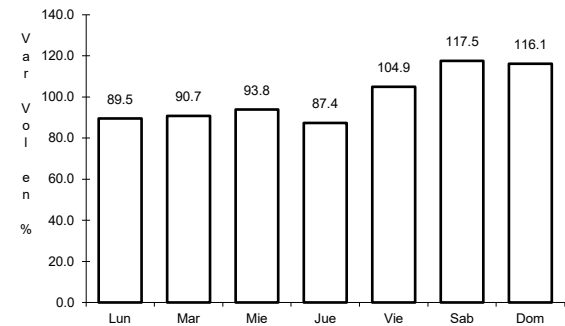
RUTA: YUC-027



Km: 0.00 Tipo: 3 Sent: 1



Km: 0.00 Tipo: 3 Sent: 2

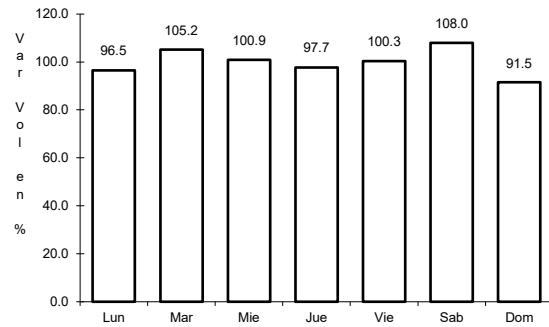


Km: 33.00 Tipo: 1 Sent: 0

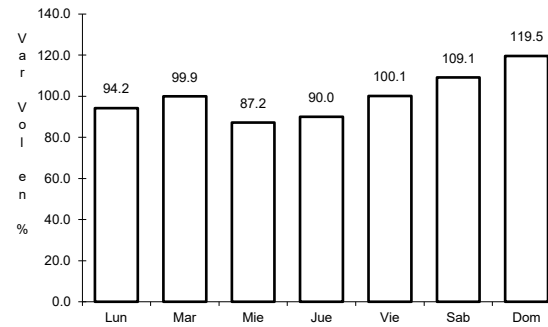
46 CARR: Ramal a Chankom

CLAVE: 31049

RUTA: YUC



Km: 0.00 Tipo: 3 Sent: 0

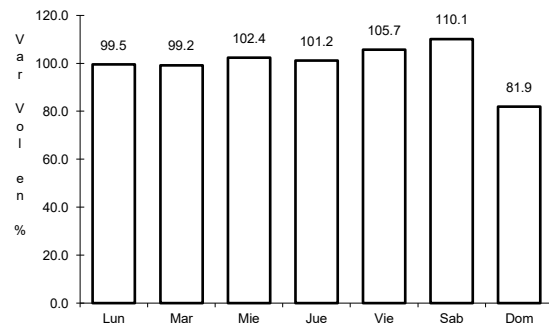


Km: 9.00 Tipo: 1 Sent: 0

47 CARR: Ramal a Dzonot Carretero

CLAVE: 31614

RUTA: YUC

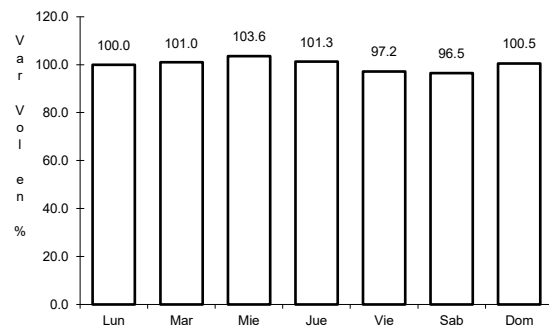


Km: 0.00 Tipo: 3 Sent: 0

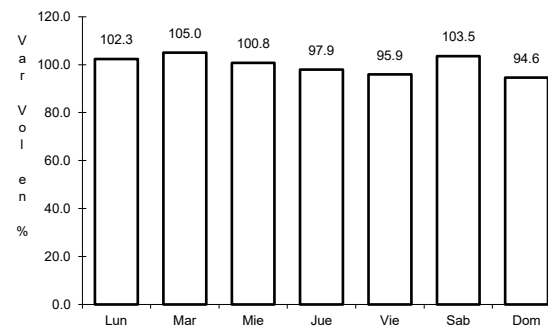
48 CARR: Ramal a San Felipe

CLAVE: 31628

RUTA: YUC



Km: 0.00 Tipo: 3 Sent: 0

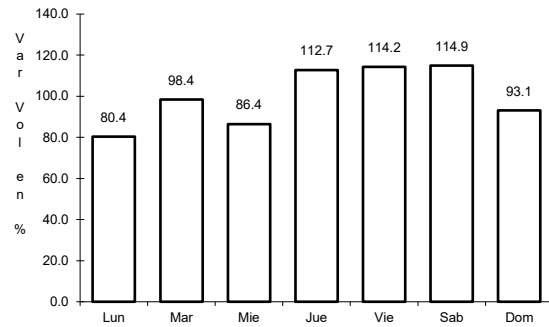


Km: 7.20 Tipo: 1 Sent: 0

49 CARR: Ramal a Tedzidz

CLAVE: 31600

RUTA: YUC



Km: 6.00

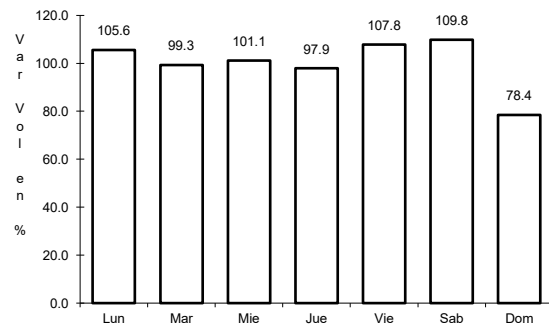
Tipo: 1

Sent: 0

50 CARR: Ramal a Yaxcabá

CLAVE: 31111

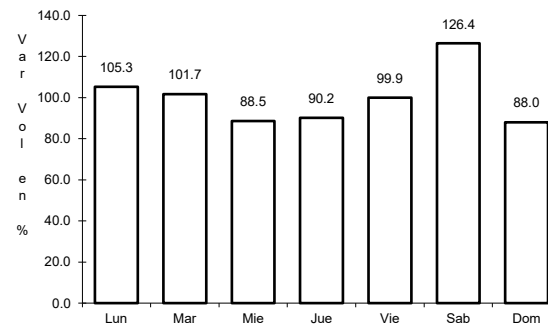
RUTA: YUC-289



Km: 0.00

Tipo: 3

Sent: 0



Km: 18.00

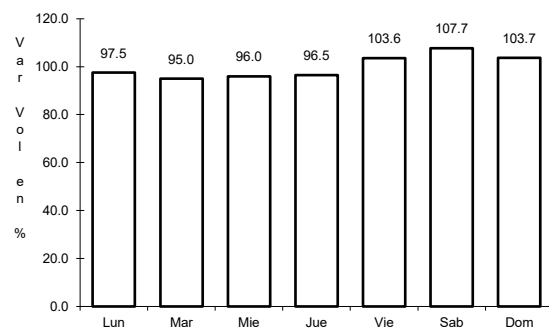
Tipo: 1

Sent: 0

51 CARR: Sinanché - Xitibcanul

CLAVE: 31619

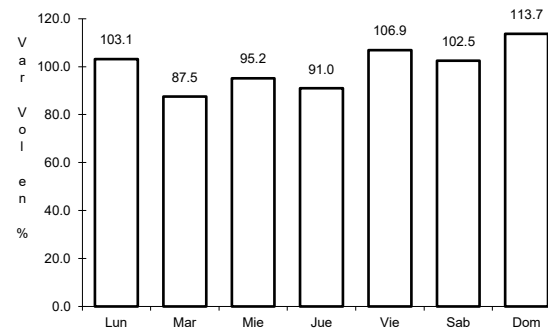
RUTA: YUC



Km: 0.00

Tipo: 3

Sent: 0



Km: 7.00

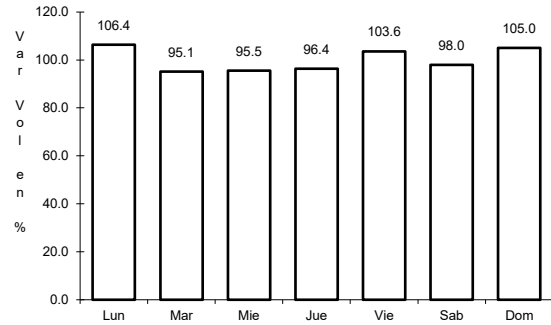
Tipo: 1

Sent: 0

52 CARR: Sucilá - Calotmul

CLAVE: 31617

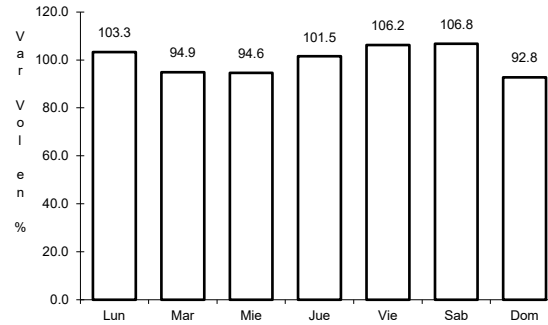
ruta: YUC



Km: 2.00

Tipo: 3

Sent: 0



Km: 30.20

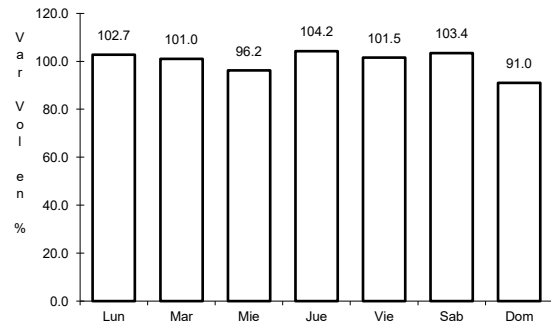
Tipo: 1

Sent: 0

53 CARR: Suma - Izamal

CLAVE: 31081

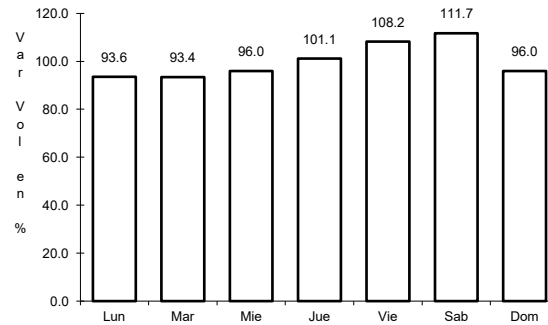
ruta: YUC-081



Km: 0.00

Tipo: 3

Sent: 0



Km: 22.00

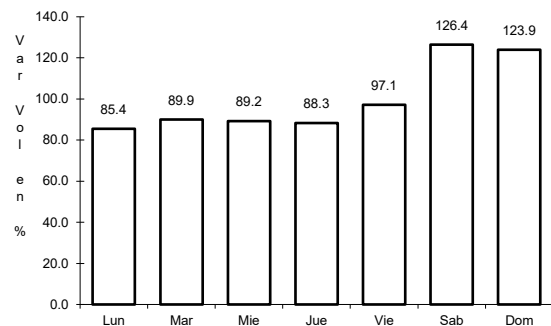
Tipo: 1

Sent: 0

54 CARR: Telchac Puerto - Dzilam de Bravo

CLAVE: 31042

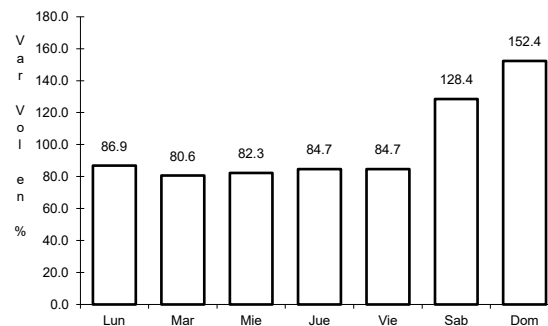
ruta: YUC



Km: 0.00

Tipo: 3

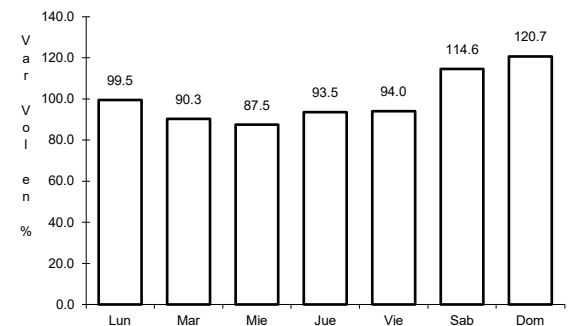
Sent: 0



Km: 26.00

Tipo: 1

Sent: 0



Km: 39.00

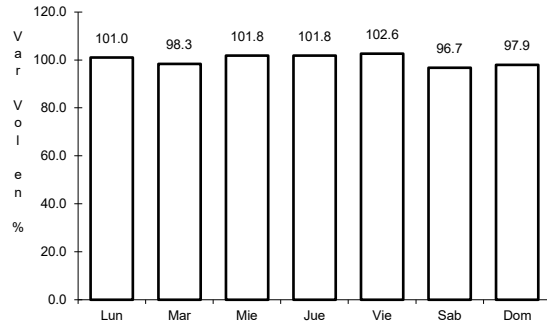
Tipo: 1

Sent: 0

55 CARR: Thul - Becanchén

CLAVE: 31104

RUTA: YUC-281



Km: 0.00

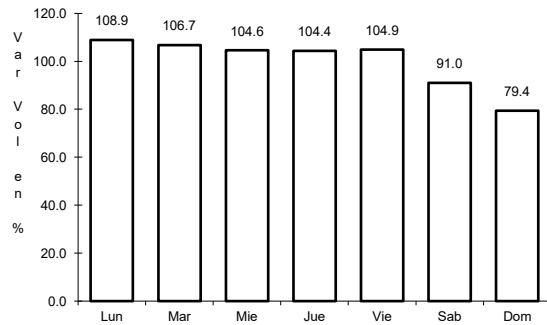
Tipo: 3

Sent: 0

56 CARR: Ticul - Chapab

CLAVE: 31623

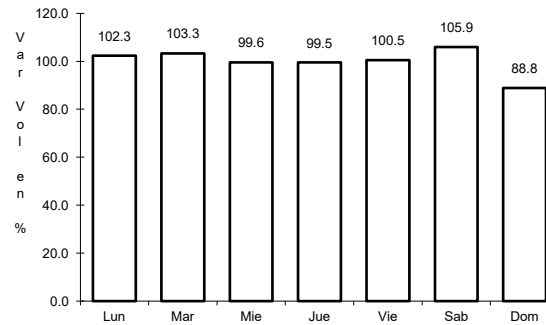
RUTA: YUC



Km: 0.00

Tipo: 3

Sent: 0



Km: 8.00

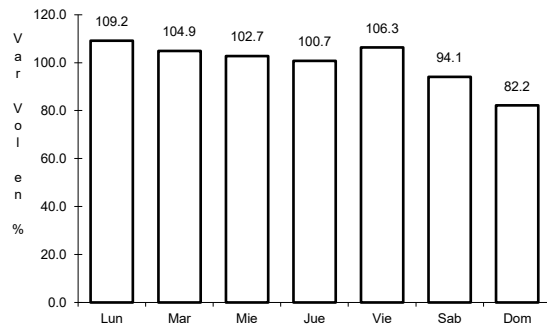
Tipo: 1

Sent: 0

57 CARR: Ticul - Dzan

CLAVE: 31621

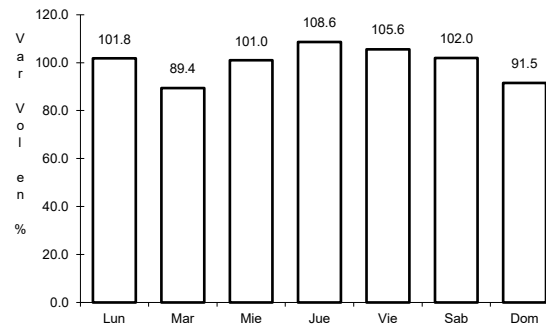
RUTA: YUC



Km: 2.50

Tipo: 3

Sent: 0



Km: 7.00

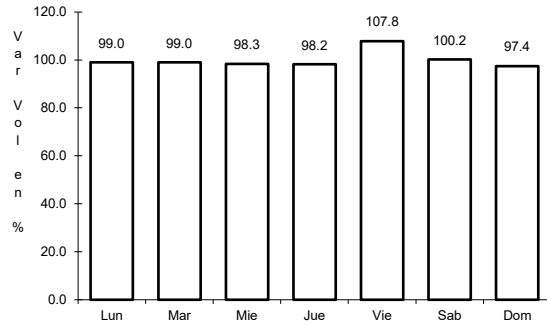
Tipo: 1

Sent: 0

58 CARR: Tixkokob - Baca

CLAVE: 31010

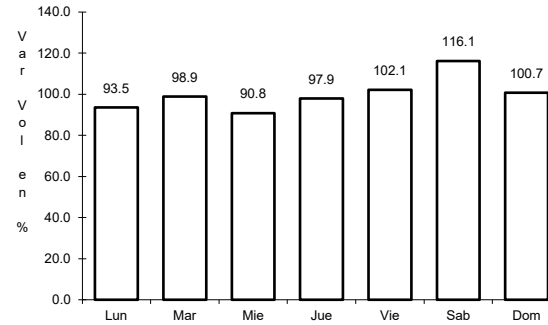
RUTA: YUC



Km: 0.00

Tipo: 3

Sent: 0



Km: 15.00

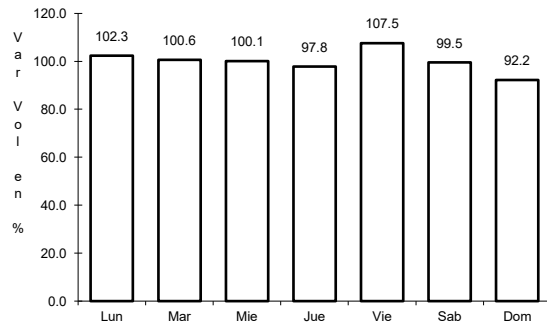
Tipo: 1

Sent: 0

59 CARR: Tixkokob - Sotuta

CLAVE: 31106

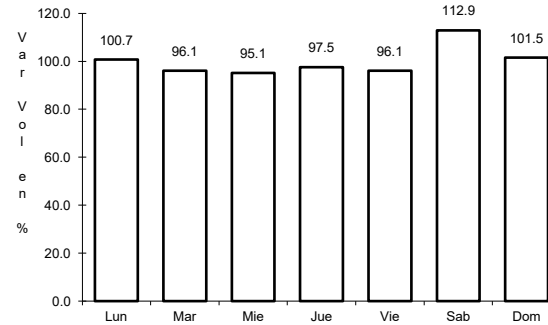
RUTA: YUC



Km: 0.00

Tipo: 3

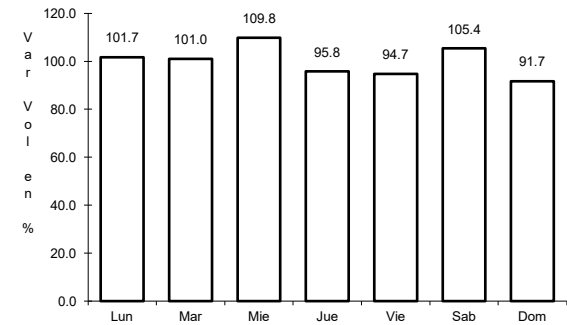
Sent: 0



Km: 31.00

Tipo: 3

Sent: 0



Km: 65.00

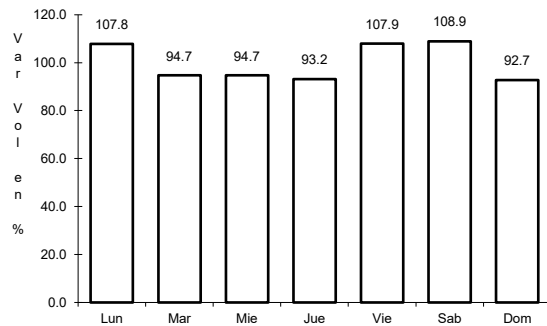
Tipo: 1

Sent: 0

60 CARR: Tizimín - Yucatán

CLAVE: 31588

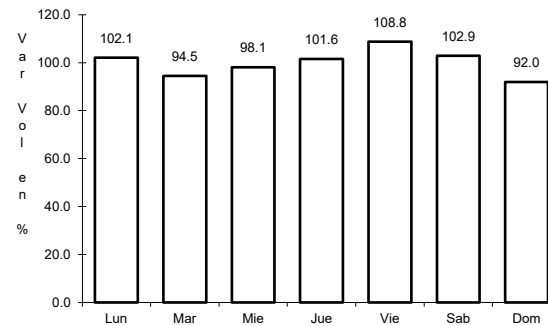
RUTA: YUC



Km: 0.00

Tipo: 3

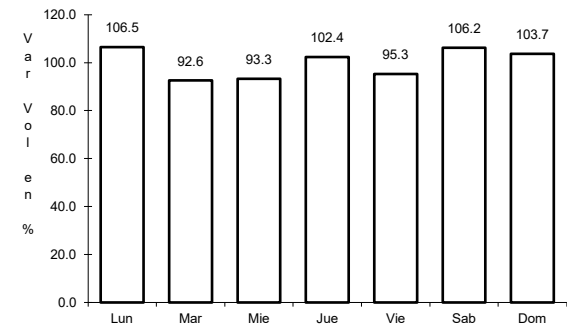
Sent: 0



Km: 30.00

Tipo: 3

Sent: 0



Km: 46.50

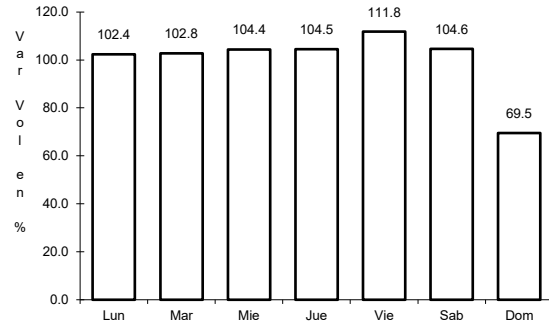
Tipo: 1

Sent: 0

61 CARR: Yaxché - Sierra Papacal

CLAVE: 31620

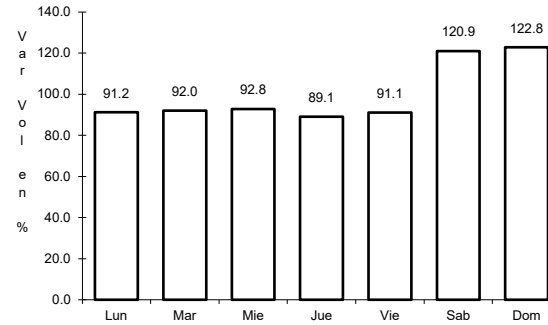
RUTA: YUC



Km: 0.00

Tipo: 3

Sent: 0



Km: 12.00

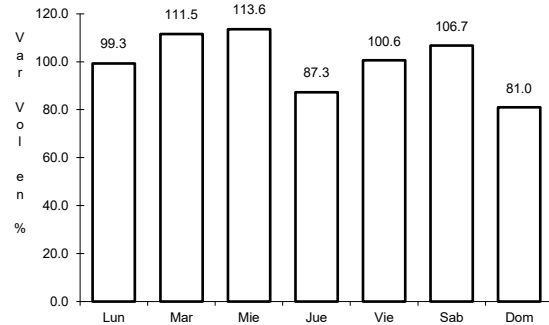
Tipo: 1

Sent: 0

62 CARR: Yobain - Chabihau

CLAVE: 31610

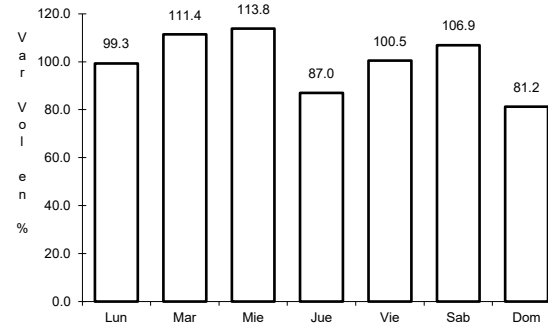
RUTA: YUC



Km: 0.00

Tipo: 3

Sent: 0



Km: 12.00

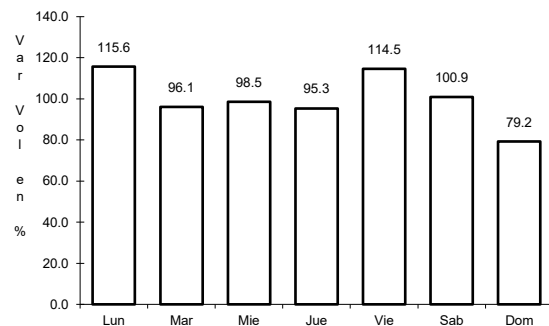
Tipo: 1

Sent: 0

63 CARR: Chemax - Cobá

CLAVE:

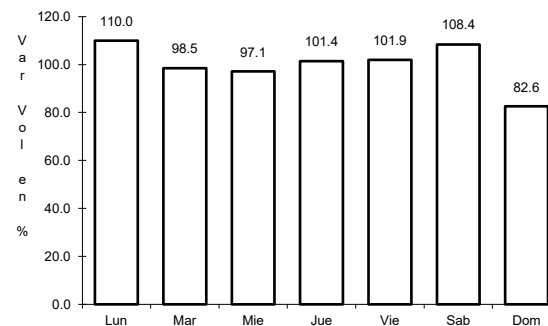
RUTA: YUC-MEX-180



Km: 0.00

Tipo: 3

Sent: 0

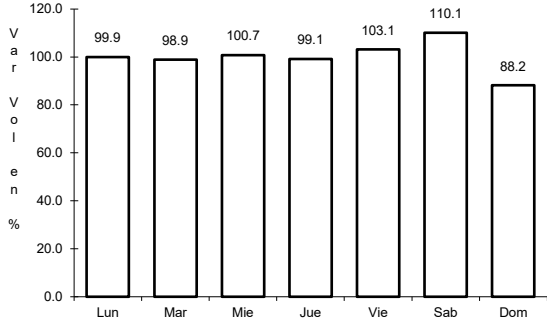


Km: 30.90

Tipo: 1

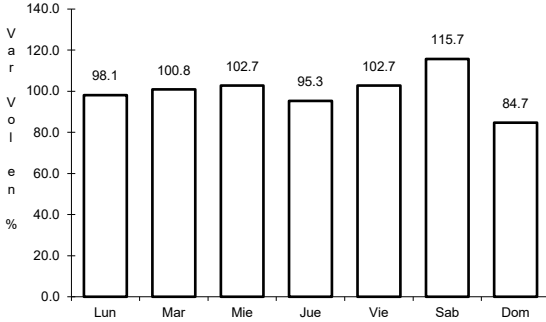
Sent: 0

64 CARR: Progreso - Celestún



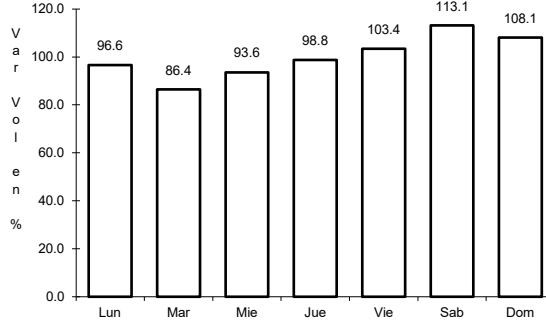
Km: 0.00 Tipo: 3 Sent: 1

CLAVE: 31040



Km: 0.00 Tipo: 3 Sent: 2

RUTA: MEX-YUC



Km: 6.00 Tipo: 3 Sent: 0

