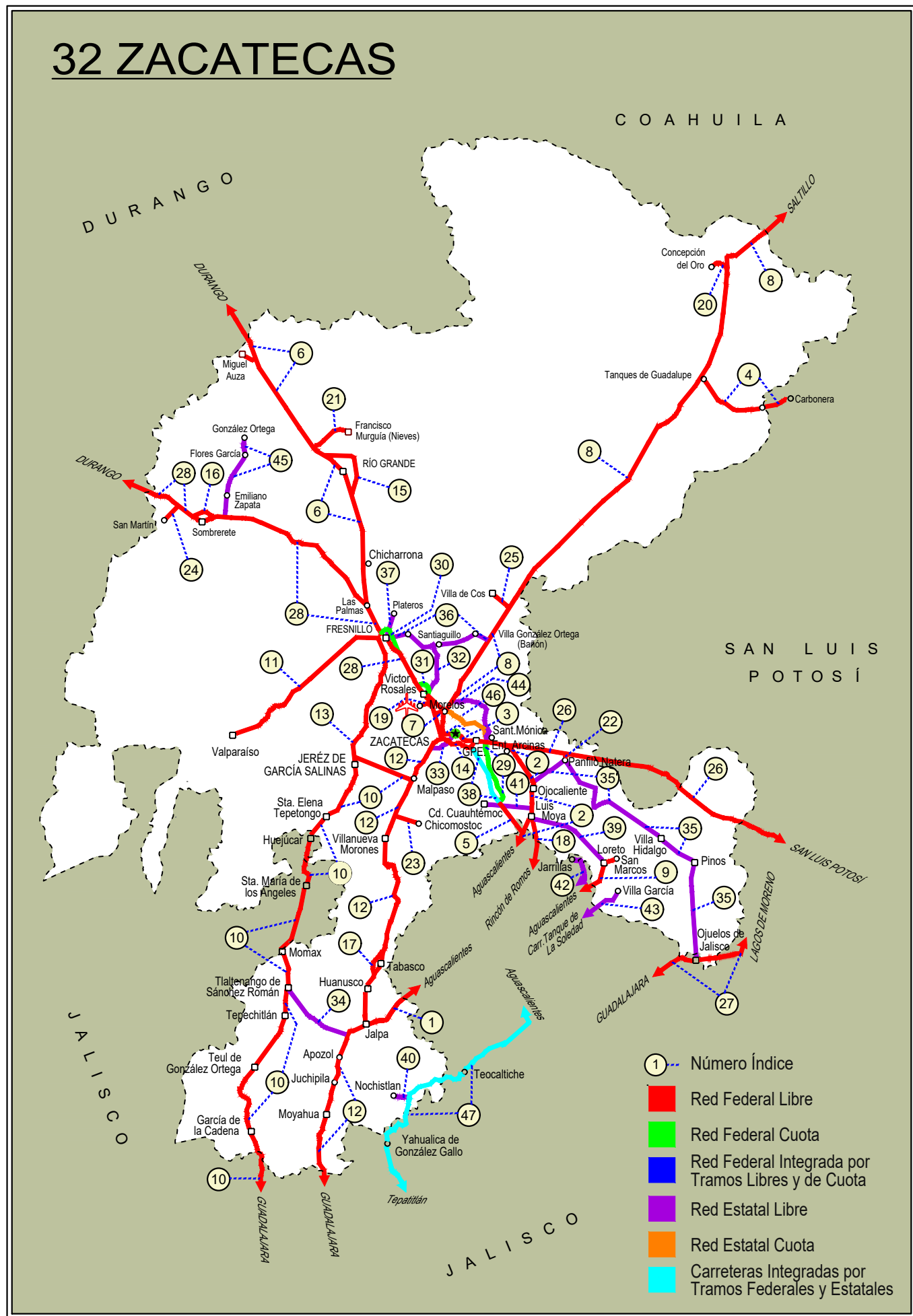




# ZACATECAS

NO. INDICE CARRETERA	RUTA
---RED FEDERAL LIBRE---	
1 Aguascalientes - Jalpa	MEX-070
2 Aguascalientes - Zacatecas	MEX-045
3 Blvd. Guadalupe - Zacatecas - La Escondida	MEX-045
4 Carbonera - T. C. (Ent. Morelos - Saltillo)	MEX-062
5 Ent. Cosío - Ent. Cuauhtémoc	MEX-045
6 Ent. La Chicharrona - Cuencamé	MEX-049
7 Ent. Morelos - Ent. Noria de Gringos	MEX-045
8 Ent. Morelos - Saltillo	MEX-054
9 Ent. Rivier - San Marcos	MEX-066
10 Ent. Tesislán - Ent. Malpaso	MEX-023
11 Fresnillo - Valparaíso	MEX-044
12 Guadalajara - Zacatecas	MEX-054
13 Jerez - Fresnillo	MEX-023
14 Libramiento de Guadalupe - Zacatecas	MEX-045
15 Libramiento de Río Grande	MEX-049
16 Libramiento de Sombrerete	MEX-045
17 Libramiento de Tabasco	MEX-054
18 Providencia - Luis Moya	MEX-071
19 Ramal a Aeropuerto Zacatecas	MEX-045
20 Ramal a Concepción del Oro	MEX-054
21 Ramal a Francisco Murguía (Nieves)	MEX-049
22 Ramal a Gral. Pánfilo Natera	MEX-049
23 Ramal a Ruinas de Chicomostoc	MEX-045
24 Ramal a San Martín	MEX-045
25 Ramal a Villa de Cos	MEX-054
26 San Luis Potosí - Ent. Arcinas	MEX-049
27 San Luis Potosí - Lagos de Moreno	MEX-070-080
28 Zacatecas - Durango	MEX-045
---RED FEDERAL DE CUOTA---	
29 Ent. Cuauhtémoc - Ent. Osiris (Cuota)	MEX-045D
30 Libramiento de Fresnillo (Cuota)	MEX-045D
31 Libramiento de Víctor Rosales (Cuota)	MEX-045D
---RED ESTATAL LIBRE---	
32 Calera de Víctor Rosales - Santiaguillo	ZAC-016
33 Cieneguillas - Zacatecas	ZAC
34 Corral de Piedras - Tlaltenango	ZAC
35 Ent. Ojo Caliente - Ent. Ojuelos de Jalisco	ZAC
36 Fresnillo - Ent. Bañón	ZAC
37 Fresnillo - Plateros	ZAC-022
38 Guadalupe - Ent. Cuauhtémoc	ZAC-118
39 Ramal a Loreto	ZAC
40 Ramal a Nochistlán	ZAC
41 Ramal a San Pedro Piedra Gorda	ZAC-AGS
42 San Gil - Jarillas	AGS-012-ZAC
43 San Rafael - Villa García	AGS-ZAC
44 Santa Mónica - Pozo de Gamboa	ZAC
45 Sombrerete - González Ortega	ZAC
---RED ESTATAL DE CUOTA---	
46 Libramiento Noreste de Zacatecas (Cuota)	ZAC-D
---CARRETERAS INTEGRADAS POR TRAMOS FEDERALES Y ESTATALES---	
47 Tepatitlán - Jaralillo	MEX-JAL-ZAC

# 32 ZACATECAS



- ① --- Número Índice
- Red Federal Libre
- Red Federal Cuota
- Red Federal Integrada por Tramos Libres y de Cuota
- Red Estatal Libre
- Red Estatal Cuota
- Carreteras Integradas por Tramos Federales y Estatales



ZACATECAS

1 CARR: Aguascalientes - Jalpa

CLAVE: 00095

RUTA: MEX-070

AÑO: 2023

LUGAR	ESTACION				CLASIFICACION VEHICULAR EN PORCIENTO										COORDENADAS					
	KM	TE	SC	TDPA	M	A	B	C2	C3	T3S2	T3S3	T3S2R4	OTROS	A	B	C	K'	D	LATITUD	LONGITUD
Aguascalientes	0.00	3	1	12678	3.5	90.0	1.3	3.8	0.5	0.3	0.1	0.3	0.2	93.5	1.3	5.2	0.092	0.508	21.874076	-102.334876
Aguascalientes	0.00	3	2	13071	4.0	90.1	1.0	3.4	0.8	0.3	0.1	0.1	0.2	94.1	1.0	4.9	0.083	0.508	21.873948	-102.334935
T. Der. Jesús María	7.30	1	1	11628	4.3	88.7	0.6	4.4	1.1	0.6	0.1	0.2	0.0	93.0	0.6	6.4	0.091	0.508	21.881518	-102.362857
T. Der. Jesús María	7.30	1	2	12005	3.9	89.6	0.5	4.2	1.0	0.6	0.1	0.1	0.0	93.5	0.5	6.0	0.093	0.508	21.881390	-102.362904
T. Izq. Villa Hidalgo	7.80	3	1	6581	2.5	90.1	0.8	2.8	1.4	1.2	0.4	0.5	0.3	92.6	0.8	6.6	0.132	0.505	21.884016	-102.372301
T. Izq. Villa Hidalgo	7.80	3	2	6702	2.2	91.8	0.8	2.4	1.2	0.9	0.3	0.2	0.2	94.0	0.8	5.2	0.159	0.505	21.883897	-102.372345
Libramiento Poniente de Aguascalientes	11.00	1	1	6387	2.7	90.9	1.6	3.0	0.8	0.4	0.2	0.3	0.1	93.6	1.6	4.8	0.131	0.518	21.889827	-102.393955
Libramiento Poniente de Aguascalientes	11.00	1	2	5952	2.5	91.1	1.6	3.1	0.7	0.5	0.2	0.2	0.1	93.6	1.6	4.8	0.113	0.518	21.889709	-102.393994
Libramiento Poniente de Aguascalientes	11.00	3	1	6339	2.3	92.3	0.8	2.5	0.9	0.5	0.3	0.3	0.1	94.6	0.8	4.6	0.139	0.502	21.892251	-102.402996
Libramiento Poniente de Aguascalientes	11.00	3	2	6387	2.6	91.3	0.9	2.6	1.2	0.8	0.3	0.3	0.0	93.9	0.9	5.2	0.178	0.502	21.892143	-102.403031
T. Der. Gracias a Dios	20.00	3	0	9805	2.4	90.9	0.9	2.9	1.1	0.9	0.5	0.3	0.1	93.3	0.9	5.8	0.105	0.512	21.886769	-102.466422
T. Izq. El Salitre	23.17	3	0	8265	2.9	88.8	1.5	3.5	1.4	1.1	0.5	0.2	0.1	91.7	1.5	6.8	0.108	0.501	21.889321	-102.497765
T. Izq. Malpaso	45.10	1	0	8112	2.5	91.8	1.2	2.1	1.2	0.7	0.2	0.3	0.0	94.3	1.2	4.5	0.118	0.502	21.880894	-102.653297
T. Der. Presa La Codorniz	49.30	3	1	10974	4.0	90.8	0.6	3.0	0.6	0.4	0.2	0.3	0.1	94.8	0.6	4.6	0.083	0.527	21.863580	-102.692551
T. Der. Presa La Codorniz	49.30	3	2	12222	3.7	91.0	0.8	2.5	0.8	0.5	0.2	0.3	0.2	94.7	0.8	4.5	0.079	0.527	21.863517	-102.692414
Calvillo	52.30	3	1	5040	3.3	92.2	0.5	2.3	0.7	0.5	0.2	0.1	0.2	95.5	0.5	4.0	0.079	0.509	21.834688	-102.747348
Calvillo	52.30	3	2	5219	2.3	93.9	0.3	2.0	0.7	0.4	0.1	0.1	0.2	96.2	0.3	3.5	0.072	0.509	21.834552	-102.747277
T. Der. Jaltiche de Abajo	63.80	3	0	2532	1.7	89.1	1.4	4.0	1.9	1.2	0.6	0.1	0.0	90.8	1.4	7.8	0.111	0.503	21.771522	-102.804104
Lim. Edos. Term. Ags. Ppia. Zac.	65.66																			
T. C. Guadalajara - Zacatecas	90.66	1	0	5223	2.7	71.3	1.3	17.7	3.2	1.5	1.0	1.2	0.1	74.0	1.3	24.7	0.085	0.522	21.652809	-102.963407

2 CARR: Aguascalientes - Zacatecas

CLAVE: 00524

RUTA: MEX-045

AÑO: 2023

LUGAR	ESTACION				CLASIFICACION VEHICULAR EN PORCIENTO										COORDENADAS					
	KM	TE	SC	TDPA	M	A	B	C2	C3	T3S2	T3S3	T3S2R4	OTROS	A	B	C	K'	D	LATITUD	LONGITUD
Aguascalientes	0.00																			
T. Izq. Pocitos	6.00	1	1	57384	3.5	89.7	0.9	4.0	0.8	0.4	0.2	0.2	0.3	93.2	0.9	5.9	0.083	0.509	21.919794	-102.291659
T. Izq. Pocitos	6.00	1	2	54994	3.6	89.4	1.1	4.0	0.8	0.4	0.2	0.2	0.3	93.0	1.1	5.9	0.078	0.509	21.919778	-102.291847
T. Der. Loreto	9.83	3	1	26022	3.2	87.9	1.9	2.8	1.0	1.6	0.6	0.8	0.2	91.1	1.9	7.0	0.112	0.507	21.972730	-102.289341
T. Der. Loreto	9.83	3	2	26858	3.2	87.2	2.0	3.0	1.1	1.9	0.6	0.8	0.2	90.4	2.0	7.6	0.092	0.507	21.972754	-102.289546
Santa Fé	16.00	1	1	30453	3.9	83.2	2.3	4.1	1.9	2.7	0.8	0.7	0.4	87.1	2.3	10.6	0.105	0.509	22.012984	-102.286797
Santa Fé	16.00	1	2	31706	3.0	85.0	2.2	3.6	1.6	2.7	0.8	0.7	0.4	88.0	2.2	9.8	0.090	0.509	22.013001	-102.286947
Santa Fé	16.00	3	1	22417	2.0	83.2	2.8	3.9	1.8	3.4	1.4	1.2	0.3	85.2	2.8	12.0	0.110	0.528	22.027121	-102.283304
Santa Fé	16.00	3	2	25051	2.2	83.2	2.3	3.5	2.3	3.1	1.6	1.3	0.5	85.4	2.3	12.3	0.090	0.528	22.027134	-102.283431
La Concepción	18.00	3	1	25558	1.8	79.6	3.5	4.7	1.8	5.2	1.4	1.7	0.3	81.4	3.5	15.1	0.074	0.530	22.037532	-102.280900

ZACATECAS

2 CARR: Aguascalientes - Zacatecas

CLAVE: 00524

RUTA: MEX-045

AÑO: 2023

LUGAR	ESTACION				CLASIFICACION VEHICULAR EN PORCIENTO										COORDENADAS					
	KM	TE	SC	TDPA	M	A	B	C2	C3	T3S2	T3S3	T3S2R4	OTROS	A	B	C	K'	D	LATITUD	LONGITUD
La Concepción	18.00	3	2	22636	2.5	78.6	2.8	5.2	2.1	5.4	1.5	1.4	0.5	81.1	2.8	16.1	0.073	0.530	22.037736	-102.281021
T. C. Libramiento San Francisco de Los Romo	19.00	3	0	13835	5.4	82.1	1.7	3.5	2.5	1.6	1.3	1.5	0.4	87.5	1.7	10.8	0.084	0.519	22.056532	-102.277226
San Francisco de Los Romo	22.73	1	1	7342	6.8	87.7	0.5	2.7	1.1	0.6	0.2	0.3	0.1	94.5	0.5	5.0	0.080	0.513	22.064998	-102.275372
San Francisco de Los Romo	22.73	1	2	6977	6.5	87.1	1.0	2.9	1.2	0.6	0.3	0.3	0.1	93.6	1.0	5.4	0.081	0.513	22.065031	-102.275556
T. Izq. Libramiento San Francisco de Los Romo	24.80	3	1	20105	2.3	79.8	3.2	3.7	1.8	6.0	1.3	1.5	0.4	82.1	3.2	14.7	0.078	0.521	22.100500	-102.274345
T. Izq. Libramiento San Francisco de Los Romo	24.80	3	2	18472	2.0	80.7	2.8	3.7	1.8	5.8	1.3	1.4	0.5	82.7	2.8	14.5	0.088	0.521	22.100481	-102.274474
T. Der. Estación Pabellón	31.00	1	1	14306	1.9	78.6	3.0	3.5	1.6	7.3	1.4	2.2	0.5	80.5	3.0	16.5	0.095	0.516	22.131540	-102.286253
T. Der. Estación Pabellón	31.00	1	2	15240	2.2	78.4	2.8	3.4	1.8	7.2	1.6	2.1	0.5	80.6	2.8	16.6	0.096	0.516	22.131570	-102.286415
T. Der. Estación Pabellón	31.00	3	1	15438	3.7	75.1	2.8	4.5	2.1	7.5	1.4	2.3	0.6	78.8	2.8	18.4	0.084	0.535	22.152219	-102.295168
T. Der. Estación Pabellón	31.00	3	2	13418	3.7	74.6	3.1	4.5	1.9	7.7	1.7	2.3	0.5	78.3	3.1	18.6	0.082	0.535	22.152393	-102.295401
T. Der. Libramiento Rincón de Romos	35.50	1	1	12855	2.6	74.5	3.9	4.4	1.9	7.7	1.4	2.6	1.0	77.1	3.9	19.0	0.078	0.508	22.174056	-102.295489
T. Der. Libramiento Rincón de Romos	35.50	1	2	12441	2.7	76.9	3.6	4.0	1.8	6.7	1.5	2.2	0.6	79.6	3.6	16.8	0.089	0.508	22.174051	-102.295613
T. Der. Libramiento Rincón de Romos	35.50	3	1	6485	3.2	88.2	1.8	4.8	0.9	0.4	0.3	0.3	0.1	91.4	1.8	6.8	0.086	0.501	22.199057	-102.302867
T. Der. Libramiento Rincón de Romos	35.50	3	2	6497	3.6	88.3	1.5	4.6	0.6	0.5	0.3	0.4	0.2	91.9	1.5	6.6	0.129	0.501	22.199000	-102.302995
Rincón de Romos	40.90	3	0	7127	2.9	91.0	1.0	2.9	0.8	0.5	0.3	0.4	0.2	93.9	1.0	5.1	0.085	0.517	22.237437	-102.317666
T. Libramiento Rincón de Romos Norte	46.00																			
La Punta	51.00	1	1	8889	2.5	68.9	5.3	4.4	2.6	9.3	2.7	3.4	0.9	71.4	5.3	23.3	0.074	0.510	22.314341	-102.296561
La Punta	51.00	1	2	8550	2.7	69.4	4.8	4.5	2.6	9.2	2.9	3.3	0.6	72.1	4.8	23.1	0.095	0.510	22.314355	-102.296655
La Punta	51.00	3	1	8056	3.7	64.3	6.2	4.6	2.2	13.0	2.3	3.1	0.6	68.0	6.2	25.8	0.079	0.504	22.334405	-102.292547
La Punta	51.00	3	2	8173	3.7	63.3	6.4	4.4	2.6	13.0	2.6	3.2	0.8	67.0	6.4	26.6	0.079	0.504	22.334678	-102.292660
Cosío	56.00	3	1	7846	3.2	64.1	5.4	3.5	2.8	13.0	2.5	4.6	0.9	67.3	5.4	27.3	0.074	0.533	22.372615	-102.298525
Cosío	56.00	3	2	7575	3.5	64.7	5.2	3.7	2.6	12.5	2.7	4.2	0.9	68.2	5.2	26.6	0.069	0.533	22.372608	-102.298615
Ent. Cosío	57.30																			
Lim. Edos. Term. Ags. Ppia. Zac.	62.67																			
Luis Moya	65.80	1	0	4896	1.4	75.4	1.0	12.1	4.2	3.6	1.8	0.4	0.1	76.8	1.0	22.2	0.076	0.526	22.419572	-102.263258
Luis Moya	65.80	3	1	4103	1.5	78.9	3.5	9.7	1.7	2.3	1.3	0.9	0.2	80.4	3.5	16.1	0.081	0.535	22.447933	-102.254283
Luis Moya	65.80	3	2	3571	1.2	79.4	2.9	9.5	2.1	2.2	1.4	0.8	0.5	80.6	2.9	16.5	0.076	0.535	22.447899	-102.254394
T. Der. San Luis Potosí	100.00	1	0	6386	1.9	79.3	3.6	10.0	2.2	1.7	0.6	0.6	0.1	81.2	3.6	15.2	0.085	0.521	22.707341	-102.322046
T. Der. San Luis Potosí	100.00	3	1	6572	1.5	68.0	3.0	10.0	6.5	5.9	2.9	1.6	0.6	69.5	3.0	27.5	0.087	0.504	22.727497	-102.336202
T. Der. San Luis Potosí	100.00	3	2	6673	1.6	67.5	3.1	10.5	6.5	5.6	2.9	1.8	0.5	69.1	3.1	27.8	0.083	0.504	22.727506	-102.336533
T. Izq. Aguascalientes (Cuota)	113.50	1	1	10994	1.8	67.0	4.9	15.0	3.7	3.7	2.0	1.5	0.4	68.8	4.9	26.3	0.087	0.514	22.751367	-102.437958
T. Izq. Aguascalientes (Cuota)	113.50	1	2	10383	1.5	67.7	4.1	15.6	3.4	4.1	2.3	1.0	0.3	69.2	4.1	26.7	0.092	0.514	22.751197	-102.437667
T. Izq. Libramiento De Guadalupe Y Zacatecas	118.20	1	1	26113	1.8	80.8	2.4	8.2	3.0	2.8	0.3	0.6	0.1	82.6	2.4	15.0	0.095	0.554	22.750762	-102.492418
T. Izq. Libramiento De Guadalupe Y Zacatecas	118.20	1	2	23779	1.9	80.9	2.3	8.0	2.6	2.8	0.5	0.8	0.2	82.8	2.3	14.9	0.082	0.554	22.750657	-102.492572
Zacatecas	119.82																			

ZACATECAS

3 CARR: Blvd. Guadalupe - Zacatecas - La Escondida

CLAVE: 00544

RUTA: MEX-045

AÑO: 2023

LUGAR	ESTACION				CLASIFICACION VEHICULAR EN PORCIENTO										COORDENADAS					
	KM	TE	SC	TDPA	M	A	B	C2	C3	T3S2	T3S3	T3S2R4	OTROS	A	B	C	K'	D	LATITUD	LONGITUD
T. Izq. Lib. Guadalupe - Zacatecas (Baja)	0.00	3	1	5255	9.0	81.0	2.0	5.6	0.5	1.3	0.3	0.2	0.1	90.0	2.0	8.0	0.099	0.537	22.754312	-102.504739
T. Izq. Lib. Guadalupe - Zacatecas (Alta)	0.00	3	1	37217	1.6	86.6	3.7	5.5	0.9	0.7	0.3	0.5	0.2	88.2	3.7	8.1	0.077	0.517	22.754206	-102.504720
T. Izq. Lib. Guadalupe - Zacatecas (Alta)	0.00	3	2	34491	1.4	87.4	3.5	5.3	0.7	0.6	0.3	0.6	0.2	88.8	3.5	7.7	0.074	0.517	22.754167	-102.505100
T. Izq. Lib. Guadalupe - Zacatecas (Baja)	0.00	3	2	4533	8.7	80.4	2.3	5.9	0.6	1.0	0.4	0.5	0.2	89.1	2.3	8.6	0.093	0.537	22.754171	-102.505330
X. Av. Universidad	7.70	1	1	54360	1.8	91.1	0.4	5.2	0.7	0.5	0.3	0.0	0.0	92.9	0.4	6.7	0.094	0.529	22.765439	-102.559645
X. Av. Universidad	7.70	1	2	47585	2.0	91.1	0.5	4.8	0.7	0.5	0.3	0.1	0.0	93.1	0.5	6.4	0.077	0.529	22.765191	-102.559478
T. C. Zacatecas - Durango (Alta)	14.50	1	1	23368	1.7	86.6	3.8	4.9	0.8	0.6	0.8	0.5	0.3	88.3	3.8	7.9	0.077	0.541	22.775043	-102.611730
T. C. Zacatecas - Durango (Baja)	14.50	1	1	6433	0.7	84.7	4.3	7.4	0.5	1.8	0.2	0.2	0.2	85.4	4.3	10.3	0.141	0.882	22.775146	-102.611439
T. C. Zacatecas - Durango (Alta)	14.50	1	2	29309	2.0	88.0	3.3	4.5	0.6	0.4	0.5	0.5	0.2	90.0	3.3	6.7	0.078	0.541	22.774799	-102.610988
T. C. Zacatecas - Durango (Baja)	14.50	1	2	861	0.6	82.9	4.3	8.0	1.3	2.3	0.3	0.2	0.1	83.5	4.3	12.2	0.213	0.882	22.774615	-102.610880

4 CARR: Carbonera - T. C. (Ent. Morelos - Saltillo)

CLAVE: 00218

RUTA: MEX-062

AÑO: 2023

LUGAR	ESTACION				CLASIFICACION VEHICULAR EN PORCIENTO										COORDENADAS					
	KM	TE	SC	TDPA	M	A	B	C2	C3	T3S2	T3S3	T3S2R4	OTROS	A	B	C	K'	D	LATITUD	LONGITUD
Carbonera	0.00	3	0	3503	7.4	74.7	1.5	11.6	1.8	1.2	0.8	0.9	0.1	82.1	1.5	16.4	0.089	0.503	23.702566	-100.626115
Cedral	18.00	1	0	5506	8.9	83.6	1.1	3.6	0.8	1.0	0.3	0.6	0.1	92.5	1.1	6.4	0.090	0.502	23.794130	-100.698322
Cedral	18.00	3	0	3851	11.6	70.2	2.5	11.0	1.7	1.5	0.5	0.8	0.2	81.8	2.5	15.7	0.111	0.510	23.827880	-100.735138
Lim. Edos. Term. S. L. P. Ppia. Zac.	79.20																			
T. C. Ent. Morelos - Saltillo	112.00	1	0	1417	2.7	73.1	1.8	17.1	2.7	2.0	0.1	0.4	0.1	75.8	1.8	22.4	0.095	0.532	24.157488	-101.493902

5 CARR: Ent. Cosío - Ent. Cuauhtémoc

CLAVE: 00579

RUTA: MEX-045

AÑO: 2023

LUGAR	ESTACION				CLASIFICACION VEHICULAR EN PORCIENTO										COORDENADAS					
	KM	TE	SC	TDPA	M	A	B	C2	C3	T3S2	T3S3	T3S2R4	OTROS	A	B	C	K'	D	LATITUD	LONGITUD
T. C. Aguascalientes - Zacatecas	57.20	3	0	10741	3.0	59.9	5.3	4.8	2.9	14.3	2.9	6.0	0.9	62.9	5.3	31.8	0.070	0.504	22.392726	-102.305877
Lim. Edos. Term. Ags. Ppia. Zac.	64.00																			
T. C. Ent. Cuauhtémoc - Ent. Osiris Cuota	70.40	1	0	10626	0.8	59.6	6.6	7.8	3.5	15.3	1.3	4.2	0.9	60.4	6.6	33.0	0.067	0.526	22.480422	-102.353497

6 CARR: Ent. La Chicharrona - Cuencamé

CLAVE: 00152

RUTA: MEX-049

AÑO: 2023

LUGAR	ESTACION				CLASIFICACION VEHICULAR EN PORCIENTO										COORDENADAS					
	KM	TE	SC	TDPA	M	A	B	C2	C3	T3S2	T3S3	T3S2R4	OTROS	A	B	C	K'	D	LATITUD	LONGITUD
Ent. La Chicharrona	0.00	3	1	5361	1.8	53.1	6.2	12.4	3.2	14.1	3.3	5.1	0.8	54.9	6.2	38.9	0.076	0.520	23.307655	-102.958716
Ent. La Chicharrona	0.00	3	2	5812	2.0	53.3	6.4	12.4	3.2	13.7	3.7	4.6	0.7	55.3	6.4	38.3	0.072	0.520	23.307655	-102.958909

ZACATECAS

6 CARR: Ent. La Chicharrona - Cuencamé

CLAVE: 00152

RUTA: MEX-049

AÑO: 2023

LUGAR	ESTACION				CLASIFICACION VEHICULAR EN PORCIENTO										COORDENADAS					
	KM	TE	SC	TDPA	M	A	B	C2	C3	T3S2	T3S3	T3S2R4	OTROS	A	B	C	K'	D	LATITUD	LONGITUD
T. Der. Cañitas de Felipe Pescador	25.86	1	1	3772	2.4	56.3	5.8	11.8	4.0	13.5	3.1	2.7	0.4	58.7	5.8	35.5	0.080	0.518	23.506167	-102.959489
T. Der. Cañitas de Felipe Pescador	25.86	1	2	4048	1.4	56.8	6.1	12.4	3.6	13.3	3.5	2.6	0.3	58.2	6.1	35.7	0.068	0.518	23.506164	-102.959677
T. Libramiento de Río Grande Sur	57.00																			
Río Grande	60.00	1	0	8459	2.0	55.1	4.9	11.8	2.9	15.2	4.4	3.1	0.6	57.1	4.9	38.0	0.066	0.510	23.788077	-103.015239
Río Grande	60.00	3	0	6873	2.4	48.5	6.6	16.6	3.6	14.2	4.2	3.2	0.7	50.9	6.6	42.5	0.066	0.505	23.881981	-103.099155
T. Libramiento de Río Grande Norte	67.40																			
T. Der. Nieves	78.00	3	0	7417	1.8	46.8	6.3	17.1	3.1	15.8	5.2	3.0	0.9	48.6	6.3	45.1	0.062	0.511	23.923483	-103.159769
X. C. Juan Aldama - Miguel Auza	124.50	1	0	7059	1.5	48.9	7.1	15.0	2.8	16.2	4.0	3.6	0.9	50.4	7.1	42.5	0.066	0.516	24.268412	-103.398563
X. C. Juan Aldama - Miguel Auza	124.50	3	0	8516	1.7	47.4	5.7	14.3	3.2	15.2	6.2	5.5	0.8	49.1	5.7	45.2	0.072	0.536	24.289705	-103.407420
T. Izq. Miguel Auza	131.20	3	0	6208	1.5	47.5	5.7	14.1	2.9	15.8	6.6	5.0	0.9	49.0	5.7	45.3	0.064	0.544	24.336643	-103.423628
Lim. Edos. Term. Zac. Ppia. Dgo.	134.30																			
T. Der. Santa Clara	144.00	1	0	5881	4.6	37.9	8.0	5.9	3.2	25.4	6.1	8.0	0.9	42.5	8.0	49.5	0.063	0.504	24.436192	-103.486436
T. Der. Santa Clara	144.00	3	0	5493	4.5	37.6	9.3	7.5	3.1	22.8	5.9	8.4	0.9	42.1	9.3	48.6	0.062	0.512	24.445015	-103.492208
T. C. Libramiento Exterior Cuencamé	196.10	1	0	5671	3.9	38.8	4.8	9.6	2.9	25.3	5.4	8.4	0.9	42.7	4.8	52.5	0.060	0.502	24.828010	-103.682298
Cuencamé	199.10	1	0	1494	8.5	77.7	2.4	5.0	3.1	1.4	1.0	0.8	0.1	86.2	2.4	11.4	0.072	0.503	24.853108	-103.693517

7 CARR: Ent. Morelos - Ent. Noria de Gringos

CLAVE: 00544

RUTA: MEX-045

AÑO: 2023

LUGAR	ESTACION				CLASIFICACION VEHICULAR EN PORCIENTO										COORDENADAS					
	KM	TE	SC	TDPA	M	A	B	C2	C3	T3S2	T3S3	T3S2R4	OTROS	A	B	C	K'	D	LATITUD	LONGITUD
Ent. Morelos	0.00																			
T. Der. Lib. Noreste de Zacatecas	0.50	1	1	4764	2.3	70.6	3.5	7.8	3.9	5.1	3.7	2.4	0.7	72.9	3.5	23.6	0.075	0.648	22.862233	-102.627143
T. Der. Lib. Noreste de Zacatecas	0.50	1	2	2592	2.5	70.6	3.4	8.1	3.4	5.4	3.6	2.3	0.7	73.1	3.4	23.5	0.099	0.648	22.861774	-102.626601
T. Der. Lib. Noreste de Zacatecas	0.50	3	0	9057	2.0	71.3	2.7	8.1	2.5	7.2	1.9	3.5	0.8	73.3	2.7	24.0	0.074	0.520	22.858359	-102.636752
Ent. Noria de Gringos	2.20																			

8 CARR: Ent. Morelos - Saltillo

CLAVE: 00149

RUTA: MEX-054

AÑO: 2023

LUGAR	ESTACION				CLASIFICACION VEHICULAR EN PORCIENTO										COORDENADAS					
	KM	TE	SC	TDPA	M	A	B	C2	C3	T3S2	T3S3	T3S2R4	OTROS	A	B	C	K'	D	LATITUD	LONGITUD
T. C. Zacatecas - Durango	0.00	3	1	4235	1.9	72.5	3.3	9.3	2.5	5.9	1.8	2.2	0.6	74.4	3.3	22.3	0.068	0.511	22.869055	-102.619507
T. C. Zacatecas - Durango	0.00	3	2	4433	1.5	72.9	3.6	9.3	2.2	6.4	1.5	2.1	0.5	74.4	3.6	22.0	0.076	0.511	22.869126	-102.619572
T. Der. Sta. Mónica	11.00	1	1	5262	1.9	58.1	3.6	17.5	1.9	13.5	1.3	1.7	0.5	60.0	3.6	36.4	0.084	0.525	22.937493	-102.570175
T. Der. Sta. Mónica	11.00	1	2	4763	1.8	58.1	3.5	18.0	2.1	13.3	1.3	1.5	0.4	59.9	3.5	36.6	0.078	0.525	22.937575	-102.570226
T. Der. Sta. Mónica	11.00	3	1	3566	1.9	50.9	4.3	20.9	2.6	13.6	1.8	3.3	0.7	52.8	4.3	42.9	0.061	0.511	22.950482	-102.559143



ZACATECAS

8 CARR: Ent. Morelos - Saltillo

CLAVE: 00149

RUTA: MEX-054

AÑO: 2023

LUGAR	ESTACION				CLASIFICACION VEHICULAR EN PORCIENTO										COORDENADAS					
	KM	TE	SC	TDPA	M	A	B	C2	C3	T3S2	T3S3	T3S2R4	OTROS	A	B	C	K'	D	LATITUD	LONGITUD
T. Der. Sta. Mónica	11.00	3	2	3732	1.5	50.6	4.7	21.6	2.6	13.2	1.8	3.1	0.9	52.1	4.7	43.2	0.073	0.511	22.950539	-102.559201
T. Izq. Villa de Cos	53.90	1	1	4023	1.6	50.9	4.6	19.8	2.6	15.7	1.9	2.0	0.9	52.5	4.6	42.9	0.070	0.538	23.265230	-102.333067
T. Izq. Villa de Cos	53.90	1	2	4684	1.8	50.1	4.3	20.2	2.6	15.9	2.1	2.1	0.9	51.9	4.3	43.8	0.071	0.538	23.265120	-102.333258
T. Izq. Villa de Cos	53.90	3	1	3848	2.3	45.6	6.2	21.6	2.7	15.9	1.9	2.9	0.9	47.9	6.2	45.9	0.069	0.520	23.275974	-102.325290
T. Izq. Villa de Cos	53.90	3	2	4162	1.9	47.7	6.3	21.6	2.3	15.6	1.6	2.4	0.6	49.6	6.3	44.1	0.068	0.520	23.279459	-102.322980
T. Der. Illescas	58.41	3	1	3421	2.3	47.3	6.7	20.8	2.7	15.3	1.7	2.5	0.7	49.6	6.7	43.7	0.065	0.501	23.291440	-102.314083
T. Der. Illescas	58.41	3	2	3405	2.1	46.9	7.1	20.7	2.6	15.7	1.7	2.5	0.7	49.0	7.1	43.9	0.062	0.501	23.291543	-102.314227
Sierra Vieja	85.50	3	1	2506	2.1	46.5	6.8	20.6	2.5	16.9	1.7	2.4	0.5	48.6	6.8	44.6	0.081	0.517	23.505343	-102.121922
Sierra Vieja	85.50	3	2	2341	1.8	45.7	7.0	21.1	2.7	17.0	1.7	2.4	0.6	47.5	7.0	45.5	0.076	0.517	23.505443	-102.122028
T. Der. Majoma	144.50	3	1	2347	1.6	44.1	6.7	24.2	3.6	11.6	2.8	4.7	0.7	45.7	6.7	47.6	0.077	0.528	23.887628	-101.729528
T. Der. Majoma	144.50	3	2	2628	1.5	39.3	7.2	27.4	3.8	11.8	3.0	5.2	0.8	40.8	7.2	52.0	0.074	0.528	23.887691	-101.729668
T. Der. San Tiburcio	185.25	1	1	2157	2.5	47.7	6.0	18.4	1.8	12.5	3.2	7.0	0.9	50.2	6.0	43.8	0.073	0.540	24.155161	-101.497417
T. Der. San Tiburcio	185.25	1	2	2535	2.0	48.6	5.8	18.7	2.0	12.7	2.7	6.8	0.7	50.6	5.8	43.6	0.067	0.540	24.155238	-101.497543
T. Der. San Tiburcio	185.25	3	1	2962	2.9	48.8	6.6	17.8	3.4	12.2	3.1	4.3	0.9	51.7	6.6	41.7	0.063	0.524	24.162159	-101.492368
T. Der. San Tiburcio	185.25	3	2	2689	3.1	49.3	6.6	17.6	3.2	12.3	2.8	4.3	0.8	52.4	6.6	41.0	0.061	0.524	24.162261	-101.492487
T. Izq. Concepción del Oro	240.00	1	1	4029	2.2	46.6	5.0	24.5	3.0	12.1	1.9	3.8	0.9	48.8	5.0	46.2	0.068	0.506	24.611819	-101.369255
T. Izq. Concepción del Oro	240.00	1	2	3927	2.4	47.4	5.0	24.1	3.1	11.4	2.2	3.6	0.8	49.8	5.0	45.2	0.069	0.506	24.611723	-101.369366
T. Izq. Concepción del Oro	240.00	3	1	3798	1.6	51.3	5.9	13.2	3.4	18.4	2.2	3.4	0.6	52.9	5.9	41.2	0.071	0.526	24.647848	-101.349880
T. Izq. Concepción del Oro	240.00	3	2	4222	1.1	51.1	5.9	13.5	3.6	18.6	2.1	3.4	0.7	52.2	5.9	41.9	0.060	0.526	24.647867	-101.349198
Lim. Edos. Term. Zac. Ppia. Coah.	266.50																			
Agua Nueva	322.00	1	0	6834	2.8	59.1	4.2	4.9	1.9	18.4	2.5	5.3	0.9	61.9	4.2	33.9	0.069	0.502	25.179235	-101.094671
T. Der. La Trinidad	333.00	3	1	8864	0.7	80.9	5.3	8.5	1.6	2.6	0.2	0.1	0.1	81.6	5.3	13.1	0.130	0.505	25.283192	-101.087052
T. Der. La Trinidad	333.00	3	2	8690	0.9	79.9	5.5	8.8	1.9	2.6	0.2	0.1	0.1	80.8	5.5	13.7	0.140	0.505	25.283221	-101.087152
X. C. Libramiento de Saltillo	348.00	1	1	19616	1.0	86.3	3.4	5.9	1.3	1.4	0.2	0.4	0.1	87.3	3.4	9.3	0.084	0.502	25.367066	-101.015715
X. C. Libramiento de Saltillo	348.00	1	2	19771	1.2	85.4	3.3	6.1	1.4	1.6	0.3	0.5	0.2	86.6	3.3	10.1	0.073	0.502	25.367141	-101.015891
Saltillo	354.00	1	1	16980	2.5	91.2	1.4	3.9	0.4	0.3	0.1	0.1	0.1	93.7	1.4	4.9	0.093	0.519	25.387817	-101.006233
Saltillo	354.00	1	2	15709	2.2	91.5	1.3	4.2	0.3	0.2	0.1	0.1	0.1	93.7	1.3	5.0	0.084	0.519	25.387869	-101.006341

9 CARR: Ent. Rivier - San Marcos

CLAVE: 00285

RUTA: MEX-066

AÑO: 2023

LUGAR	ESTACION				CLASIFICACION VEHICULAR EN PORCIENTO										COORDENADAS					
	KM	TE	SC	TDPA	M	A	B	C2	C3	T3S2	T3S3	T3S2R4	OTROS	A	B	C	K'	D	LATITUD	LONGITUD
T. C. Aguascalientes - Zacatecas	0.00	3	1	9569	4.0	87.1	1.1	3.6	2.0	1.1	0.6	0.3	0.2	91.1	1.1	7.8	0.148	0.510	21.961750	-102.283735
T. C. Aguascalientes - Zacatecas	0.00	3	2	9947	4.0	87.2	1.1	3.6	2.0	1.1	0.5	0.3	0.2	91.2	1.1	7.7	0.108	0.510	21.961877	-102.283707
T. Izq. El Tepetate	10.50	3	0	11010	4.6	87.2	1.3	3.8	1.6	0.7	0.4	0.3	0.1	91.8	1.3	6.9	0.085	0.502	21.999414	-102.192500

ZACATECAS

9 CARR: Ent. Rivier - San Marcos

CLAVE: 00285

RUTA: MEX-066

AÑO: 2023

LUGAR	ESTACION				CLASIFICACION VEHICULAR EN PORCIENTO										COORDENADAS					
	KM	TE	SC	TDPA	M	A	B	C2	C3	T3S2	T3S3	T3S2R4	OTROS	A	B	C	K'	D	LATITUD	LONGITUD
T. Der. Jilotepec	23.60	3	0	8586	3.9	87.5	1.8	4.1	1.5	0.6	0.3	0.2	0.1	91.4	1.8	6.8	0.085	0.505	22.058437	-102.096841
Villa Juárez	30.00	3	0	11942	4.1	86.9	1.5	4.9	1.2	0.6	0.4	0.3	0.1	91.0	1.5	7.5	0.079	0.506	22.109106	-102.058183
Ciénega Grande	41.50	1	0	9539	5.1	83.5	2.0	5.2	1.8	0.8	0.9	0.4	0.3	88.6	2.0	9.4	0.078	0.500	22.179408	-102.022766
Ciénega Grande	41.50	3	0	7294	5.0	84.0	2.0	5.7	1.7	0.8	0.2	0.1	0.5	89.0	2.0	9.0	0.096	0.514	22.203149	-102.013444
Lim. Edos. Term. Ags. Ppia. Zac.	45.75																			
San Marcos	55.34	1	0	8843	17.5	74.6	1.4	2.5	1.3	1.1	0.9	0.5	0.2	92.1	1.4	6.5	0.083	0.515	22.276711	-101.956078

10 CARR: Ent. Tesistán - Ent. Malpaso

CLAVE: 00584

RUTA: MEX-023

AÑO: 2023

LUGAR	ESTACION				CLASIFICACION VEHICULAR EN PORCIENTO										COORDENADAS					
	KM	TE	SC	TDPA	M	A	B	C2	C3	T3S2	T3S3	T3S2R4	OTROS	A	B	C	K'	D	LATITUD	LONGITUD
T. C. Guadalajara - Tesistán	0.00	3	1	22442	6.1	87.1	0.5	4.6	0.7	0.4	0.3	0.2	0.1	93.2	0.5	6.3	0.084	0.506	20.796461	-103.459025
T. C. Guadalajara - Tesistán	0.00	3	2	21876	6.8	87.6	0.6	3.3	0.8	0.4	0.2	0.2	0.1	94.4	0.6	5.0	0.117	0.506	20.796473	-103.459111
Lim. Edos. Term. Jal. Ppia. Zac.	42.00																			
García de La Cadena	54.00	1	0	4292	2.2	82.3	1.9	8.6	1.6	1.2	2.0	0.2	0.0	84.5	1.9	13.6	0.124	0.516	21.193091	-103.464559
Tlaltenango de Sánchez Román	147.50	3	0	6624	3.6	80.3	1.8	9.1	1.5	2.2	1.2	0.2	0.1	83.9	1.8	14.3	0.092	0.527	21.801127	-103.298799
Momax	165.00	3	0	3561	2.3	82.1	1.9	8.0	1.5	1.4	1.8	0.9	0.1	84.4	1.9	13.7	0.092	0.523	21.934905	-103.308108
Lim. Edos. Term. Zac. Ppia. Jal.	171.80																			
Colotlán	175.00	1	0	5346	2.2	81.8	1.9	9.5	0.7	1.9	1.0	0.8	0.2	84.0	1.9	14.1	0.090	0.521	22.089256	-103.272072
Lim. Edos. Term. Jal. Ppia. Zac.	209.90																			
Lim. Edos. Term. Zac. Ppia. Jal.	214.80																			
Lim. Edos. Term. Jal. Ppia. Zac.	223.95																			
Tepetongo	235.00	3	0	6154	3.4	84.5	1.4	7.5	0.7	0.9	0.9	0.6	0.1	87.9	1.4	10.7	0.089	0.528	22.466591	-103.141836
Jerez de García Salinas	249.00	1	1	4446	1.5	87.2	0.7	7.6	0.7	0.7	0.7	0.7	0.2	88.7	0.7	10.6	0.126	0.505	22.600685	-103.017429
Jerez de García Salinas	249.00	1	2	4359	1.4	87.1	0.6	7.6	0.8	0.8	0.7	0.8	0.2	88.5	0.6	10.9	0.094	0.505	22.600730	-103.017513
T. C. Guadalajara - Zacatecas	275.00	1	1	4562	1.8	85.4	1.4	7.6	0.9	1.3	0.8	0.5	0.3	87.2	1.4	11.4	0.096	0.509	22.617225	-102.785251
T. C. Guadalajara - Zacatecas	275.00	1	2	4730	1.4	85.7	1.5	7.1	1.0	1.8	0.7	0.5	0.3	87.1	1.5	11.4	0.091	0.509	22.617298	-102.785223

11 CARR: Fresnillo - Valparaíso

CLAVE: 32547

RUTA: MEX-044

AÑO: 2023

LUGAR	ESTACION				CLASIFICACION VEHICULAR EN PORCIENTO										COORDENADAS					
	KM	TE	SC	TDPA	M	A	B	C2	C3	T3S2	T3S3	T3S2R4	OTROS	A	B	C	K'	D	LATITUD	LONGITUD
Fresnillo	0.00	3	0	9810	3.4	72.9	2.1	12.7	2.7	3.9	1.6	0.5	0.2	76.3	2.1	21.6	0.096	0.524	23.174021	-102.919751
T. Izq. Guanajuato	24.50	1	0	2468	1.4	76.3	2.3	17.2	1.5	0.8	0.3	0.2	0.0	77.7	2.3	20.0	0.094	0.541	23.106791	-103.079973
T. Izq. Sombretillo	45.00	3	0	2089	1.1	77.3	2.2	16.6	1.5	0.9	0.4	0.0	0.0	78.4	2.2	19.4	0.090	0.504	22.997247	-103.213655

ZACATECAS

11 CARR: Fresnillo - Valparaíso

CLAVE: 32547

RUTA: MEX-044

AÑO: 2023

LUGAR	ESTACION				CLASIFICACION VEHICULAR EN PORCIENTO										COORDENADAS					
	KM	TE	SC	TDPA	M	A	B	C2	C3	T3S2	T3S3	T3S2R4	OTROS	A	B	C	K'	D	LATITUD	LONGITUD
T. Izq. San José de Llanetes	55.00	3	0	1535	2.5	74.2	2.4	13.8	2.1	3.6	1.4	0.0	0.0	76.7	2.4	20.9	0.091	0.526	22.915508	-103.301858
T. Izq. Lobatos	71.00	3	0	2266	2.1	78.9	2.2	11.4	1.8	2.8	0.8	0.0	0.0	81.0	2.2	16.8	0.097	0.537	22.825946	-103.441578
Valparaíso	90.00	1	0	2484	1.1	78.1	1.8	16.8	1.2	0.7	0.3	0.0	0.0	79.2	1.8	19.0	0.109	0.550	22.797140	-103.542942

12 CARR: Guadalajara - Zacatecas

CLAVE: 00150

RUTA: MEX-054

AÑO: 2023

LUGAR	ESTACION				CLASIFICACION VEHICULAR EN PORCIENTO										COORDENADAS					
	KM	TE	SC	TDPA	M	A	B	C2	C3	T3S2	T3S3	T3S2R4	OTROS	A	B	C	K'	D	LATITUD	LONGITUD
Guadalajara	0.00																			
X. Periférico de Guadalajara	6.19	3	1	3842	7.7	84.4	1.3	3.2	1.2	1.1	0.6	0.3	0.2	92.1	1.3	6.6	0.111	0.537	20.768752	-103.339994
X. Periférico de Guadalajara	6.19	3	2	4459	7.6	84.1	1.4	3.1	1.3	1.3	0.6	0.3	0.3	91.7	1.4	6.9	0.115	0.537	20.768717	-103.340081
T. Der. Ixtlahuacán del Río	49.46	3	0	5154	6.4	79.2	1.5	8.9	1.7	1.6	0.3	0.3	0.1	85.6	1.5	12.9	0.091	0.501	20.871117	-103.236836
Lim. Edos. Term. Jal. Ppia. Zac.	76.49																			
T. Izq. Moyahua	106.43	1	0	2348	3.3	76.1	3.5	9.1	2.5	2.8	2.0	0.7	0.0	79.4	3.5	17.1	0.086	0.533	21.251290	-103.161694
Apozol	129.28	1	0	4718	2.6	79.1	1.7	7.7	2.4	3.8	1.3	1.1	0.3	81.7	1.7	16.6	0.091	0.500	21.448682	-103.093458
Jalpa	159.39	1	0	5069	1.9	81.4	2.8	7.4	1.6	2.3	0.9	1.4	0.3	83.3	2.8	13.9	0.093	0.524	21.617299	-103.003098
Tabasco	189.40	1	0	3581	1.3	80.6	2.0	8.7	1.6	3.2	0.8	1.5	0.3	81.9	2.0	16.1	0.095	0.516	21.843552	-102.933659
Tabasco	189.40	3	0	4039	2.5	79.4	1.7	10.1	2.4	2.3	1.0	0.4	0.2	81.9	1.7	16.4	0.076	0.507	21.886372	-102.906340
Villanueva	255.70	3	0	4089	1.7	83.9	2.4	5.1	2.1	2.0	1.4	0.8	0.6	85.6	2.4	12.0	0.101	0.515	22.375730	-102.881676
T. Izq. Jerez de García Salinas	289.13	1	1	2624	1.2	83.5	2.1	6.7	1.8	3.1	1.0	0.5	0.1	84.7	2.1	13.2	0.111	0.526	22.601650	-102.764170
T. Izq. Jerez de García Salinas	289.13	1	2	2369	0.7	85.0	1.7	6.9	1.3	3.1	0.8	0.4	0.1	85.7	1.7	12.6	0.092	0.526	22.601480	-102.764374
T. Izq. Jerez de García Salinas	289.13	3	1	4839	1.8	86.5	2.2	3.6	1.9	2.0	1.1	0.5	0.4	88.3	2.2	9.5	0.104	0.527	22.625399	-102.750961
T. Izq. Jerez de García Salinas	289.13	3	2	5385	1.8	86.9	2.1	3.5	1.8	2.1	1.0	0.5	0.3	88.7	2.1	9.2	0.086	0.527	22.625052	-102.751255
T. C. Zacatecas - Durango	311.83	1	1	11682	2.4	81.7	3.5	7.2	1.7	1.6	1.1	0.6	0.2	84.1	3.5	12.4	0.092	0.519	22.771622	-102.630726
T. C. Zacatecas - Durango	311.83	1	2	12595	2.6	82.2	3.5	6.8	1.8	1.5	0.9	0.5	0.2	84.8	3.5	11.7	0.089	0.519	22.771794	-102.630679

13 CARR: Jerez - Fresnillo

CLAVE: 32542

RUTA: MEX-023

AÑO: 2023

LUGAR	ESTACION				CLASIFICACION VEHICULAR EN PORCIENTO										COORDENADAS					
	KM	TE	SC	TDPA	M	A	B	C2	C3	T3S2	T3S3	T3S2R4	OTROS	A	B	C	K'	D	LATITUD	LONGITUD
Jerez	0.00	3	0	2312	2.9	84.8	1.6	6.7	1.6	1.7	0.5	0.1	0.1	87.7	1.6	10.7	0.098	0.510	22.683227	-103.015880
T. C. Ent. Fresnillo - Valparaíso	60.00	1	0	4652	3.8	81.3	1.0	7.7	3.0	2.2	0.8	0.1	0.1	85.1	1.0	13.9	0.100	0.517	23.156051	-102.881980

ZACATECAS

14 CARR: Libramiento de Guadalupe - Zacatecas

CLAVE: 32582

RUTA: MEX-045

AÑO: 2023

LUGAR	ESTACION				CLASIFICACION VEHICULAR EN PORCIENTO										COORDENADAS					
	KM	TE	SC	TDPA	M	A	B	C2	C3	T3S2	T3S3	T3S2R4	OTROS	A	B	C	K'	D	LATITUD	LONGITUD
T. C. Aguascalientes - Zacatecas (Alta)	0.00	3	1	15828	2.0	74.1	3.3	9.8	2.7	3.9	2.4	1.5	0.3	76.1	3.3	20.6	0.073	0.530	22.740635	-102.505038
T. C. Aguascalientes - Zacatecas (Baja)	0.00	3	1	5679	4.5	84.0	0.7	7.6	1.0	1.2	0.5	0.4	0.1	88.5	0.7	10.8	0.079	0.525	22.740947	-102.504489
T. C. Aguascalientes - Zacatecas (Alta)	0.00	3	2	14020	1.7	74.9	3.1	9.9	2.8	3.7	2.4	1.3	0.2	76.6	3.1	20.3	0.075	0.530	22.739668	-102.507609
T. C. Aguascalientes - Zacatecas (Baja)	0.00	3	2	5144	4.3	84.0	0.9	7.0	1.3	1.3	0.6	0.5	0.1	88.3	0.9	10.8	0.085	0.525	22.739527	-102.507099
Av. Jesús Reyes Heróles	9.80	1	1	8967	3.4	85.2	2.5	4.5	1.5	1.7	0.6	0.4	0.2	88.6	2.5	8.9	0.085	0.506	22.755874	-102.565687
Av. Jesús Reyes Heróles	9.80	1	2	9196	3.5	84.9	2.5	4.9	1.4	1.6	0.6	0.4	0.2	88.4	2.5	9.1	0.097	0.506	22.755768	-102.565690
X. C. Cieneguillas - Zacatecas (Alta)	13.00	3	1	17187	7.6	74.4	3.0	4.5	2.8	3.7	1.6	2.1	0.3	82.0	3.0	15.0	0.083	0.522	22.757049	-102.597895
X. C. Cieneguillas - Zacatecas (Alta)	13.00	3	2	18745	7.7	74.4	3.0	4.5	2.6	3.8	1.7	2.0	0.3	82.1	3.0	14.9	0.089	0.522	22.756799	-102.596593
T. C. Zacatecas - Durango	17.50	1	1	12340	2.0	78.9	2.6	6.7	1.4	4.5	1.8	1.7	0.4	80.9	2.6	16.5	0.109	0.543	22.772774	-102.617085
T. C. Zacatecas - Durango	17.50	1	2	14640	1.7	79.7	2.4	6.5	1.5	4.3	2.0	1.5	0.4	81.4	2.4	16.2	0.104	0.543	22.772688	-102.617100

15 CARR: Libramiento de Río Grande

CLAVE:

RUTA: MEX-049

AÑO: 2023

LUGAR	ESTACION				CLASIFICACION VEHICULAR EN PORCIENTO										COORDENADAS					
	KM	TE	SC	TDPA	M	A	B	C2	C3	T3S2	T3S3	T3S2R4	OTROS	A	B	C	K'	D	LATITUD	LONGITUD
T. C. La Chicharrona - Cuernamé (Sur)	55.90	3	0	7618	3.0	47.1	4.7	9.6	3.1	18.9	5.2	7.5	0.9	50.1	4.7	45.2	0.070	0.530	23.806963	-103.013607
T. C. La Chicharrona - Cuernamé (Norte)	68.59	1	0	7903	2.2	53.4	4.4	11.6	2.9	17.1	3.5	4.0	0.9	55.6	4.4	40.0	0.068	0.530	23.862837	-103.069727

16 CARR: Libramiento de Sombrerete

CLAVE:

RUTA: MEX-045

AÑO: 2023

LUGAR	ESTACION				CLASIFICACION VEHICULAR EN PORCIENTO										COORDENADAS					
	KM	TE	SC	TDPA	M	A	B	C2	C3	T3S2	T3S3	T3S2R4	OTROS	A	B	C	K'	D	LATITUD	LONGITUD
T. C. Zacatecas - Durango Oriente	158.00																			
T. C. Zacatecas - Durango Poniente	163.50	1	0	3725	2.2	72.3	2.9	6.1	3.0	10.0	1.6	1.6	0.3	74.5	2.9	22.6	0.074	0.534	23.655987	-103.650785

17 CARR: Libramiento de Tabasco

CLAVE:

RUTA: MEX-054

AÑO: 2023

LUGAR	ESTACION				CLASIFICACION VEHICULAR EN PORCIENTO										COORDENADAS					
	KM	TE	SC	TDPA	M	A	B	C2	C3	T3S2	T3S3	T3S2R4	OTROS	A	B	C	K'	D	LATITUD	LONGITUD
T. C. Guadalajara - Zacatecas Sur	185.00																			
T. C. Guadalajara - Zacatecas Norte	190.10	1	0	3605	2.0	76.6	1.4	12.5	2.1	2.6	0.8	1.7	0.3	78.6	1.4	20.0	0.087	0.525	21.878534	-102.911058

ZACATECAS

18 CARR: Providencia - Luis Moya

CLAVE: 00112

RUTA: MEX-071

AÑO: 2023

LUGAR	ESTACION				CLASIFICACION VEHICULAR EN PORCIENTO														COORDENADAS	
	KM	TE	SC	TDPA	M	A	B	C2	C3	T3S2	T3S3	T3S2R4	OTROS	A	B	C	K'	D	LATITUD	LONGITUD
T. C. Aguascalientes - Zacatecas	0.00	3	0	5884	5.6	76.7	1.5	4.0	3.0	2.7	2.6	3.1	0.8	82.3	1.5	16.2	0.079	0.515	22.060778	-102.273916
T. Izq. Pabellón de Arteaga	12.10	1	0	5996	3.4	79.4	2.0	4.1	3.0	1.8	2.3	3.2	0.8	82.8	2.0	15.2	0.072	0.501	22.144798	-102.251388
T. Der. Villa Juárez	14.90	3	0	7377	4.3	83.6	2.0	2.7	1.7	1.0	1.8	2.2	0.7	87.9	2.0	10.1	0.086	0.500	22.177246	-102.245356
X. C. Rincón de Romos - Ciénega Grande	21.22	3	0	6211	4.3	82.6	1.7	3.9	2.9	1.5	1.7	1.2	0.2	86.9	1.7	11.4	0.076	0.508	22.230842	-102.241402
X. C. La Punta - Mesillas	30.35	3	0	3733	5.4	81.2	1.8	3.6	1.5	2.7	2.0	1.5	0.3	86.6	1.8	11.6	0.069	0.502	22.317895	-102.233733
San Jacinto	34.25	3	0	2866	9.7	75.6	2.1	4.0	1.6	2.9	2.3	1.5	0.3	85.3	2.1	12.6	0.078	0.512	22.353070	-102.232534
Lim. Edos. Term. Ags. Ppia. Zac.	37.50																			
Luis Moya	43.52	1	0	5171	2.3	73.9	0.5	16.5	2.0	2.7	1.5	0.5	0.1	76.2	0.5	23.3	0.075	0.526	22.423432	-102.246303

19 CARR: Ramal a Aeropuerto Zacatecas

CLAVE: 32546

RUTA: MEX-045

AÑO: 2023

LUGAR	ESTACION				CLASIFICACION VEHICULAR EN PORCIENTO														COORDENADAS	
	KM	TE	SC	TDPA	M	A	B	C2	C3	T3S2	T3S3	T3S2R4	OTROS	A	B	C	K'	D	LATITUD	LONGITUD
T. C. Zacatecas - Durango	0.00	3	1	2193	2.6	78.7	3.3	10.3	2.2	1.3	0.2	0.8	0.6	81.3	3.3	15.4	0.117	0.519	22.909674	-102.674140
T. C. Zacatecas - Durango	0.00	3	2	2362	2.9	78.8	3.4	10.1	2.0	1.1	0.2	0.9	0.6	81.7	3.4	14.9	0.153	0.519	22.909633	-102.674062
Aeropuerto	1.95																			

20 CARR: Ramal a Concepción del Oro

CLAVE: 32565

RUTA: MEX-054

AÑO: 2023

LUGAR	ESTACION				CLASIFICACION VEHICULAR EN PORCIENTO														COORDENADAS	
	KM	TE	SC	TDPA	M	A	B	C2	C3	T3S2	T3S3	T3S2R4	OTROS	A	B	C	K'	D	LATITUD	LONGITUD
T. C. Ent. Morelos - Saltillo	0.00	3	0	7600	6.5	56.0	4.1	11.4	7.0	9.2	2.5	2.6	0.7	62.5	4.1	33.4	0.084	0.523	24.620302	-101.403935
Concepción del Oro	3.20																			

21 CARR: Ramal a Francisco Murguía (Nieves)

CLAVE: 32541

RUTA: MEX-049

AÑO: 2023

LUGAR	ESTACION				CLASIFICACION VEHICULAR EN PORCIENTO														COORDENADAS	
	KM	TE	SC	TDPA	M	A	B	C2	C3	T3S2	T3S3	T3S2R4	OTROS	A	B	C	K'	D	LATITUD	LONGITUD
T. C. Ent. La Chicharrona - Cuencamé	0.00	3	0	1571	0.7	77.0	1.3	18.4	0.7	1.1	0.4	0.4	0.0	77.7	1.3	21.0	0.101	0.512	23.924905	-103.155693
Francisco Murguía (Nieves)	17.40																			

ZACATECAS

22 CARR: Ramal a Gral. Pánfilo Natera

CLAVE: 32559

RUTA: MEX-049

AÑO: 2023

LUGAR	ESTACION				CLASIFICACION VEHICULAR EN PORCIENTO										COORDENADAS					
	KM	TE	SC	TDPA	M	A	B	C2	C3	T3S2	T3S3	T3S2R4	OTROS	A	B	C	K'	D	LATITUD	LONGITUD
T. C. San Luis Potosí - Ent. Arcinas	0.00	3	1	2694	7.4	77.4	2.0	12.7	0.2	0.2	0.1	0.0	0.0	84.8	2.0	13.2	0.090	0.500	22.673715	-102.107842
T. C. San Luis Potosí - Ent. Arcinas	0.00	3	2	2690	7.2	76.5	2.5	13.3	0.2	0.2	0.1	0.0	0.0	83.7	2.5	13.8	0.093	0.500	22.673696	-102.107741
Gral. Pánfilo Natera	1.50																			

23 CARR: Ramal a Ruinas de Chicomostoc

CLAVE: 00544

RUTA: MEX-045

AÑO: 2023

LUGAR	ESTACION				CLASIFICACION VEHICULAR EN PORCIENTO										COORDENADAS					
	KM	TE	SC	TDPA	M	A	B	C2	C3	T3S2	T3S3	T3S2R4	OTROS	A	B	C	K'	D	LATITUD	LONGITUD
T. C. Guadalajara - Zacatecas	0.00	3	0	90	13.8	76.7	4.1	4.3	1.1	0.0	0.0	0.0	0.0	90.5	4.1	5.4	0.326	0.528	22.456325	-102.826252
Ruinas de Chicomostoc	2.20																			

24 CARR: Ramal a San Martín

CLAVE: 00544

RUTA: MEX-045

AÑO: 2023

LUGAR	ESTACION				CLASIFICACION VEHICULAR EN PORCIENTO										COORDENADAS					
	KM	TE	SC	TDPA	M	A	B	C2	C3	T3S2	T3S3	T3S2R4	OTROS	A	B	C	K'	D	LATITUD	LONGITUD
T. C. Zacatecas - Durango	0.00	3	0	1363	2.8	79.5	0.7	10.4	4.1	1.5	0.7	0.3	0.0	82.3	0.7	17.0	0.096	0.519	23.691401	-103.718907
San Martín	4.00																			

25 CARR: Ramal a Villa de Cos

CLAVE: 32564

RUTA: MEX-054

AÑO: 2023

LUGAR	ESTACION				CLASIFICACION VEHICULAR EN PORCIENTO										COORDENADAS					
	KM	TE	SC	TDPA	M	A	B	C2	C3	T3S2	T3S3	T3S2R4	OTROS	A	B	C	K'	D	LATITUD	LONGITUD
T. C. Ent. Morelos - Saltillo	0.00	3	1	2185	4.3	90.9	0.6	2.4	1.1	0.4	0.3	0.0	0.0	95.2	0.6	4.2	0.125	0.537	23.272778	-102.332242
T. C. Ent. Morelos - Saltillo	0.00	3	2	2537	4.5	90.0	0.5	3.0	1.1	0.5	0.3	0.1	0.0	94.5	0.5	5.0	0.141	0.537	23.272733	-102.332318
Villa de Cos	3.30	1	1	3453	4.8	78.9	0.6	13.2	0.8	1.2	0.4	0.0	0.1	83.7	0.6	15.7	0.131	0.525	23.206530	-102.241420
Villa de Cos	3.30	1	2	3130	4.7	78.2	0.6	13.6	0.7	1.5	0.6	0.1	0.0	82.9	0.6	16.5	0.132	0.525	23.286510	-102.241630

26 CARR: San Luis Potosí - Ent. Arcinas

CLAVE: 00134

RUTA: MEX-049

AÑO: 2023

LUGAR	ESTACION				CLASIFICACION VEHICULAR EN PORCIENTO										COORDENADAS					
	KM	TE	SC	TDPA	M	A	B	C2	C3	T3S2	T3S3	T3S2R4	OTROS	A	B	C	K'	D	LATITUD	LONGITUD
T. C. San Luis Potosí - Matehuala	0.00																			
T. Izq. Periférico de San Luis Potosí	9.35	3	1	11674	5.3	83.4	2.1	4.1	1.3	1.8	0.7	0.9	0.4	88.7	2.1	9.2	0.108	0.505	22.206626	-101.031921
T. Izq. Periférico de San Luis Potosí	9.35	3	2	11431	5.3	83.4	2.1	4.1	1.3	1.8	0.7	0.9	0.4	88.7	2.1	9.2	0.099	0.505	22.206583	-101.032094
Mexquitic	22.50	1	1	7291	9.1	67.3	2.6	4.5	1.8	8.3	2.3	3.2	0.9	76.4	2.6	21.0	0.088	0.511	22.247911	-101.102542

ZACATECAS

26 CARR: San Luis Potosí - Ent. Arcinas

CLAVE: 00134

RUTA: MEX-049

AÑO: 2023

LUGAR	ESTACION				CLASIFICACION VEHICULAR EN PORCIENTO														COORDENADAS	
	KM	TE	SC	TDPA	M	A	B	C2	C3	T3S2	T3S3	T3S2R4	OTROS	A	B	C	K'	D	LATITUD	LONGITUD
Mexquitic	22.50	1	2	6984	9.1	67.4	2.6	4.5	1.9	8.3	2.2	3.1	0.9	76.5	2.6	20.9	0.078	0.511	22.249076	-101.105093
Mexquitic	22.50	3	1	6395	5.8	67.3	3.7	4.6	2.1	10.1	2.1	3.4	0.9	73.1	3.7	23.2	0.085	0.507	22.256369	-101.125569
Mexquitic	22.50	3	2	6571	5.8	67.2	3.4	4.6	1.9	10.2	2.3	3.7	0.9	73.0	3.4	23.6	0.093	0.507	22.256321	-101.125674
T. Der. Charcas	30.90	1	1	7043	4.4	67.7	4.2	5.4	2.1	9.4	2.0	3.9	0.9	72.1	4.2	23.7	0.081	0.510	22.308321	-101.155923
T. Der. Charcas	30.90	1	2	6769	4.0	67.8	4.6	5.4	1.9	9.4	2.2	3.9	0.8	71.8	4.6	23.6	0.086	0.510	22.308222	-101.156007
T. Der. Charcas	30.90	3	1	5045	4.8	67.0	3.8	5.1	2.4	8.7	3.0	4.3	0.9	71.8	3.8	24.4	0.083	0.509	22.319087	-101.171688
T. Der. Charcas	30.90	3	2	4870	4.8	66.7	3.9	5.1	2.4	8.7	3.1	4.5	0.8	71.5	3.9	24.6	0.087	0.509	22.319011	-101.171768
Lim. Edos. Term. S. L. P. Ppia. Zac.	55.13																			
Lim. Edos. Term. Zac. Ppia. S. L. P.	89.30																			
T. Der. Salinas	99.00	1	1	3423	5.5	59.2	5.2	4.3	2.6	13.1	3.6	5.6	0.9	64.7	5.2	30.1	0.080	0.517	22.603100	-101.706143
T. Der. Salinas	99.00	1	2	3198	4.9	59.5	5.3	4.4	2.7	13.1	3.6	5.6	0.9	64.4	5.3	30.3	0.094	0.517	22.602992	-101.706228
T. Der. Salinas	99.00	3	1	3887	5.0	57.0	5.5	4.3	2.3	15.7	3.4	5.8	1.0	62.0	5.5	32.5	0.078	0.512	22.619174	-101.736859
T. Der. Salinas	99.00	3	2	4084	5.2	56.9	5.5	4.4	2.3	15.7	3.4	5.8	0.8	62.1	5.5	32.4	0.077	0.512	22.619077	-101.737055
Lim. Edos. Term. S. L. P. Ppia. Zac.	122.47																			
T. Izq. Pánfilo Natera	139.00	1	1	3469	1.6	57.3	4.5	12.0	2.5	13.0	3.6	4.7	0.8	58.9	4.5	36.6	0.078	0.507	22.678762	-102.096402
T. Izq. Pánfilo Natera	139.00	1	2	3377	2.0	56.3	5.0	11.5	3.2	12.5	3.9	4.8	0.8	58.3	5.0	36.7	0.090	0.507	22.678579	-102.096471
Ent. Arcinas	162.98	1	1	4427	1.9	55.7	5.8	11.0	3.9	11.6	3.6	5.7	0.8	57.6	5.8	36.6	0.078	0.531	22.719960	-102.325392
Ent. Arcinas	162.98	1	2	3909	1.6	58.0	5.5	10.3	3.4	11.5	3.3	5.6	0.8	59.6	5.5	34.9	0.068	0.531	22.719781	-102.325430

27 CARR: San Luis Potosí - Lagos de Moreno

CLAVE: 00133

RUTA: MEX-070-080

AÑO: 2023

LUGAR	ESTACION				CLASIFICACION VEHICULAR EN PORCIENTO														COORDENADAS	
	KM	TE	SC	TDPA	M	A	B	C2	C3	T3S2	T3S3	T3S2R4	OTROS	A	B	C	K'	D	LATITUD	LONGITUD
San Luis Potosí	0.00	3	1	19741	1.9	94.5	0.4	1.5	0.3	0.4	0.5	0.3	0.2	96.4	0.4	3.2	0.087	0.509	22.133863	-101.030969
San Luis Potosí	0.00	3	2	20481	1.8	94.4	0.4	1.6	0.3	0.4	0.6	0.3	0.2	96.2	0.4	3.4	0.070	0.509	22.133772	-101.030888
X. Periférico de San Luis Potosí	8.41	3	0	12981	3.7	84.9	1.4	5.0	1.0	1.7	1.4	0.5	0.4	88.6	1.4	10.0	0.078	0.516	22.127621	-101.045541
El Tepetate	41.90	1	0	8344	3.3	67.3	3.9	4.2	2.7	9.6	3.8	4.2	1.0	70.6	3.9	25.5	0.077	0.502	22.025685	-101.224284
El Tepetate	41.90	3	0	8297	3.7	66.0	3.4	4.0	2.5	10.3	2.7	6.5	0.9	69.7	3.4	26.9	0.077	0.501	22.004516	-101.253779
Villa de Arriaga	61.90	3	0	4735	2.6	69.1	4.4	6.3	2.8	8.7	3.2	2.3	0.6	71.7	4.4	23.9	0.079	0.508	21.896862	-101.409021
Lim. Edos. Term. S. L. P. Ppia. Zac.	70.23																			
Lim. Edos. Term. Zac. Ppia. Jal.	82.94																			
Ojuelos de Jalisco	83.20	1	0	5472	4.1	74.3	4.6	6.4	2.0	5.7	1.8	1.0	0.1	78.4	4.6	17.0	0.093	0.500	21.875495	-101.572980
Ojuelos de Jalisco	83.20	3	0	2918	6.3	73.6	3.2	5.9	1.7	6.0	2.2	1.0	0.1	79.9	3.2	16.9	0.075	0.501	21.854401	-101.593870
X. C. Lagos de Moreno - San Luis Potosí (Cuota)	140.00	1	0	4111	6.8	73.6	3.0	5.8	2.4	4.7	1.7	1.8	0.2	80.4	3.0	16.6	0.076	0.505	21.447583	-101.805827
X. C. León - Aguascalientes	146.90	1	1	6744	6.9	63.6	4.1	5.4	2.2	10.5	1.8	5.1	0.4	70.5	4.1	25.4	0.108	0.516	21.375753	-101.894397

ZACATECAS

27 CARR: San Luis Potosi - Lagos de Moreno

CLAVE: 00133

RUTA: MEX-070-080

AÑO: 2023

LUGAR	ESTACION				CLASIFICACION VEHICULAR EN PORCIENTO														COORDENADAS	
	KM	TE	SC	TDPA	M	A	B	C2	C3	T3S2	T3S3	T3S2R4	OTROS	A	B	C	K'	D	LATITUD	LONGITUD
X. C. León - Aguascalientes	146.90	1	2	7182	6.8	63.7	4.1	5.4	2.3	10.5	1.7	5.1	0.4	70.5	4.1	25.4	0.114	0.516	21.375643	-101.894327
Lagos de Moreno	150.00																			

28 CARR: Zacatecas - Durango

CLAVE: 00544

RUTA: MEX-045

AÑO: 2023

LUGAR	ESTACION				CLASIFICACION VEHICULAR EN PORCIENTO														COORDENADAS	
	KM	TE	SC	TDPA	M	A	B	C2	C3	T3S2	T3S3	T3S2R4	OTROS	A	B	C	K'	D	LATITUD	LONGITUD
Zacatecas	0.00																			
T. Izq. Guadalajara	6.40	3	1	14420	1.2	78.9	2.7	8.5	4.0	3.5	0.4	0.6	0.2	80.1	2.7	17.2	0.087	0.525	22.783641	-102.626971
T. Izq. Guadalajara	6.40	3	2	15932	1.1	79.7	2.8	8.1	3.8	3.3	0.4	0.6	0.2	80.8	2.8	16.4	0.083	0.525	22.782727	-102.627267
T. Der. Saltillo (T. Morelos)	15.00	1	1	18384	1.4	66.2	3.6	8.6	2.8	12.1	2.2	2.5	0.6	67.6	3.6	28.8	0.078	0.510	22.850389	-102.623978
T. Der. Saltillo (T. Morelos)	15.00	1	2	17652	1.7	66.5	3.9	7.8	2.7	11.7	1.9	3.0	0.8	68.2	3.9	27.9	0.089	0.510	22.851292	-102.643971
T. Der. Saltillo (T. Morelos)	15.00	3	1	14532	1.8	70.3	4.7	7.9	3.0	6.7	1.9	2.9	0.8	72.1	4.7	23.2	0.091	0.535	22.875871	-102.637466
T. Der. Saltillo (T. Morelos)	15.00	3	2	16715	1.6	71.0	4.5	7.8	2.7	7.0	1.8	2.8	0.8	72.6	4.5	22.9	0.078	0.535	22.874424	-102.653552
T. Libramiento de Víctor Rosales	26.20																			
Víctor Rosales	28.00	1	1	15226	1.6	74.4	3.3	6.2	2.8	7.0	2.3	2.0	0.4	76.0	3.3	20.7	0.103	0.506	22.919342	-102.676056
Víctor Rosales	28.00	1	2	15572	2.1	73.8	3.4	5.7	3.2	6.7	2.3	2.2	0.6	75.9	3.4	20.7	0.090	0.506	22.919222	-102.676303
T. Der. Facultad de Veterinaria	32.30	1	1	10261	1.7	65.6	4.4	9.8	2.4	12.0	2.2	1.5	0.4	67.3	4.4	28.3	0.089	0.516	22.971630	-102.719757
T. Der. Facultad de Veterinaria	32.30	1	2	9619	1.5	66.9	4.0	9.5	2.4	11.5	2.3	1.3	0.6	68.4	4.0	27.6	0.077	0.516	22.971346	-102.719673
Gral. Enrique Estrada	34.60	3	1	11762	1.3	69.1	3.6	9.1	2.6	10.2	2.2	1.5	0.4	70.4	3.6	26.0	0.075	0.501	23.012253	-102.751732
Gral. Enrique Estrada	34.60	3	2	11822	1.5	68.1	3.9	9.2	2.8	10.4	2.0	1.7	0.4	69.6	3.9	26.5	0.069	0.501	23.010245	-102.750968
T. Libramiento de Víctor Rosales	35.90																			
T. Libramiento de Fresnillo Sur	49.30																			
Fresnillo	58.50	1	1	9611	1.5	80.6	2.4	8.4	2.7	2.7	1.4	0.2	0.1	82.1	2.4	15.5	0.084	0.522	23.160595	-102.852467
Fresnillo	58.50	1	2	10487	1.2	80.2	2.6	8.2	2.9	2.8	1.8	0.2	0.1	81.4	2.6	16.0	0.080	0.522	23.160551	-102.852574
T. C. Libramiento de Fresnillo (Cuota) Norte	66.40	1	1	6772	0.9	74.8	5.1	9.1	7.5	1.7	0.5	0.3	0.1	75.7	5.1	19.2	0.087	0.508	23.236552	-102.915717
T. C. Libramiento de Fresnillo (Cuota) Norte	66.40	1	2	6562	0.8	74.8	5.1	9.1	7.5	1.8	0.5	0.3	0.1	75.6	5.1	19.3	0.079	0.508	23.236513	-102.915822
Ent. La Chicharrona	74.30	1	1	9481	1.8	67.2	3.6	9.2	3.3	8.0	3.7	2.5	0.7	69.0	3.6	27.4	0.092	0.510	23.288715	-102.951634
Ent. La Chicharrona	74.30	1	2	9100	2.1	64.3	4.0	10.4	3.5	8.4	4.2	2.3	0.8	66.4	4.0	29.6	0.096	0.510	23.288682	-102.951954
Ent. La Chicharrona	74.30	3	0	7268	1.3	64.3	5.6	18.8	2.6	4.1	2.0	1.1	0.2	65.6	5.6	28.8	0.086	0.536	23.307799	-102.964707
T. Der. Sain Alto	121.00	3	0	4790	1.8	66.3	5.0	14.9	2.8	5.0	2.6	1.3	0.3	68.1	5.0	26.9	0.070	0.511	23.580888	-103.273903
T. Izq. Sombrerete (2º Acceso)	161.50	3	0	5695	1.7	71.2	3.9	11.0	2.7	5.1	2.6	1.5	0.3	72.9	3.9	23.2	0.072	0.504	23.646569	-103.651395
T. C. Libramiento de Sombrerete	165.00	3	0	5851	2.4	72.2	5.0	12.5	1.7	3.0	1.7	1.2	0.3	74.6	5.0	20.4	0.076	0.508	23.660597	-103.668766
Lim. Edos. Term. Zac. Ppia. Dgo.	190.08																			
X. C. Súchil - Villa Unión	206.98	1	0	3673	2.2	72.3	5.9	4.6	2.0	6.9	2.9	2.7	0.5	74.5	5.9	19.6	0.075	0.505	23.750127	-103.963291



ZACATECAS

28 CARR: Zacatecas - Durango

CLAVE: 00544

RUTA: MEX-045

AÑO: 2023

LUGAR	ESTACION				CLASIFICACION VEHICULAR EN PORCIENTO										COORDENADAS					
	KM	TE	SC	TDPA	M	A	B	C2	C3	T3S2	T3S3	T3S2R4	OTROS	A	B	C	K'	D	LATITUD	LONGITUD
X. C. Súchil - Villa Unión	206.98	3	0	6701	2.5	76.6	4.8	5.1	1.3	4.7	2.0	2.3	0.7	79.1	4.8	16.1	0.083	0.511	23.744284	-104.000249
T. Izq. Graceros	210.00	1	0	5343	13.7	67.0	3.9	4.7	1.7	4.7	1.7	1.9	0.7	80.7	3.9	15.4	0.087	0.504	23.748051	-104.038500
Amado Nervo	231.51	1	0	4739	2.2	72.2	5.5	5.3	2.1	6.4	2.7	2.7	0.9	74.4	5.5	20.1	0.076	0.509	23.841101	-104.184828
Amado Nervo	231.51	3	0	5936	2.6	77.6	5.1	4.6	1.5	4.4	1.7	1.9	0.6	80.2	5.1	14.7	0.090	0.503	23.844285	-104.195742
Nombre de Dios	236.80	1	0	2962	8.8	82.3	2.0	5.8	0.5	0.3	0.1	0.1	0.1	91.1	2.0	6.9	0.085	0.514	23.843788	-104.223798
Nombre de Dios	236.80	3	0	4072	7.4	83.9	1.8	5.7	0.6	0.3	0.1	0.1	0.1	91.3	1.8	6.9	0.089	0.523	23.851430	-104.248925
T. Der. Constanacia	240.60	3	0	6315	3.1	78.6	3.1	6.8	1.7	3.4	1.6	1.1	0.6	81.7	3.1	15.2	0.085	0.514	23.872080	-104.268676
T. Der. Tuitán	250.80	3	0	6547	2.2	77.4	3.9	6.9	1.4	4.4	1.7	1.7	0.4	79.6	3.9	16.5	0.091	0.502	23.923138	-104.337226
T. Der. Independencia y Libertad	261.70	1	0	6483	3.1	76.4	4.0	7.3	2.1	3.8	1.6	1.2	0.5	79.5	4.0	16.5	0.081	0.506	23.993409	-104.373866
T. Der. Independencia y Libertad	261.70	3	1	3872	1.2	82.3	4.5	3.4	1.4	3.7	1.6	1.5	0.4	83.5	4.5	12.0	0.143	0.501	24.011685	-104.405947
T. Der. Independencia y Libertad	261.70	3	2	3852	1.7	80.3	4.9	4.0	1.6	4.0	1.6	1.5	0.4	82.0	4.9	13.1	0.102	0.501	24.011576	-104.406171
T. Izq. Parras de La Fuente	276.60	1	1	4550	1.6	82.0	4.8	4.0	1.2	3.4	1.5	1.1	0.4	83.6	4.8	11.6	0.125	0.501	24.019156	-104.506514
T. Izq. Parras de La Fuente	276.60	1	2	4563	1.8	81.6	4.9	4.0	1.3	3.3	1.4	1.3	0.4	83.4	4.9	11.7	0.090	0.501	24.019067	-104.506579
T. Izq. Parras de La Fuente	276.60	3	1	4571	3.1	84.4	2.5	5.1	1.5	1.7	0.8	0.7	0.2	87.5	2.5	10.0	0.113	0.541	24.021210	-104.525673
T. Izq. Parras de La Fuente	276.60	3	2	5382	3.0	83.9	2.5	5.1	1.8	1.8	0.8	0.8	0.3	86.9	2.5	10.6	0.079	0.541	24.021103	-104.525687
Durango	287.30	1	1	7110	6.2	82.4	2.1	4.8	1.6	1.4	0.6	0.6	0.3	88.6	2.1	9.3	0.086	0.504	24.026392	-104.574777
Durango	287.30	1	2	6983	6.1	82.5	2.2	5.1	1.5	1.3	0.5	0.6	0.2	88.6	2.2	9.2	0.098	0.504	24.026280	-104.574732

29 CARR: Ent. Cuauhtémoc - Ent. Osiris (Cuota)

CLAVE: 32558

RUTA: MEX-045D

AÑO: 2023

LUGAR	ESTACION				CLASIFICACION VEHICULAR EN PORCIENTO										COORDENADAS					
	KM	TE	SC	TDPA	M	A	B	C2	C3	T3S2	T3S3	T3S2R4	OTROS	A	B	C	K'	D	LATITUD	LONGITUD
T. C. Ent. Cosío - Ent. Cuauhtémoc	70.40	3	0	10076	2.2	54.7	5.7	12.4	3.8	12.6	3.4	4.4	0.8	56.9	5.7	37.4	0.057	0.511	22.491557	-102.360668
Plaza de Cobro Zacatecas	97.80	2	0	8735	0.3	49.3	3.8	5.1	4.5	21.7	4.1	9.1	2.1	49.6	3.8	46.6	0.067	0.500	22.710742	-102.448827
T. C. Aguascalientes - Zacatecas	103.40	1	0	8946	3.4	54.4	8.7	12.4	3.0	13.4	2.2	1.9	0.6	57.8	8.7	33.5	0.062	0.545	22.746069	-102.453610

30 CARR: Libramiento de Fresnillo (Cuota)

CLAVE: 32581

RUTA: MEX-045D

AÑO: 2023

LUGAR	ESTACION				CLASIFICACION VEHICULAR EN PORCIENTO										COORDENADAS					
	KM	TE	SC	TDPA	M	A	B	C2	C3	T3S2	T3S3	T3S2R4	OTROS	A	B	C	K'	D	LATITUD	LONGITUD
T. C. Zacatecas - Durango	49.80	3	1	3506	1.8	50.1	6.3	7.3	3.1	18.6	3.9	8.0	0.9	51.9	6.3	41.8	0.086	0.528	23.118154	-102.806873
T. C. Zacatecas - Durango	49.80	3	2	3134	2.0	49.9	6.4	7.5	3.2	18.1	3.5	8.6	0.8	51.9	6.4	41.7	0.088	0.528	23.119074	-102.807417
Plaza de Cobro Morfín Chávez	57.05	2	1	3860	0.4	51.4	2.1	4.8	4.3	21.9	4.5	9.1	1.5	51.8	2.1	46.1	0.088	0.500	23.177904	-102.828678
Plaza de Cobro Morfín Chávez	57.05	2	2	3860	0.4	51.4	2.1	4.8	4.3	21.9	4.5	9.1	1.5	51.8	2.1	46.1	0.088	0.500	23.177904	-102.828678
T. Der. Plateros	61.70	1	1	3860	1.8	56.8	2.9	8.7	4.2	16.7	3.0	5.0	0.9	58.6	2.9	38.5	0.080	0.509	23.185558	-102.831665

ZACATECAS

30 CARR: Libramiento de Fresnillo (Cuota)

CLAVE: 32581

RUTA: MEX-045D

AÑO: 2023

LUGAR	ESTACION				CLASIFICACION VEHICULAR EN PORCIENTO										COORDENADAS					
	KM	TE	SC	TDPA	M	A	B	C2	C3	T3S2	T3S3	T3S2R4	OTROS	A	B	C	K'	D	LATITUD	LONGITUD
T. Der. Plateros	61.70	1	2	3996	2.0	57.0	2.5	8.9	4.0	16.5	2.9	5.3	0.9	59.0	2.5	38.5	0.072	0.509	23.185482	-102.831936
T. Der. Plateros	61.70	3	1	4375	1.3	54.9	3.1	8.5	3.5	19.6	3.6	4.7	0.8	56.2	3.1	40.7	0.093	0.524	23.211151	-102.855460
T. Der. Plateros	61.70	3	2	3970	1.4	55.5	3.2	8.0	3.6	19.5	3.5	4.7	0.6	56.9	3.2	39.9	0.067	0.524	23.210920	-102.855600
T. C. Zacatecas - Durango	69.85	1	1	3839	1.4	52.1	3.6	13.5	2.6	17.0	4.3	4.7	0.8	53.5	3.6	42.9	0.086	0.531	23.238037	-102.913468
T. C. Zacatecas - Durango	69.85	1	2	3385	1.4	51.3	3.5	14.4	2.9	16.9	4.1	4.6	0.9	52.7	3.5	43.8	0.082	0.531	23.237934	-102.913895

31 CARR: Libramiento de Victor Rosales (Cuota)

CLAVE: 32015

RUTA: MEX-045D

AÑO: 2023

LUGAR	ESTACION				CLASIFICACION VEHICULAR EN PORCIENTO										COORDENADAS					
	KM	TE	SC	TDPA	M	A	B	C2	C3	T3S2	T3S3	T3S2R4	OTROS	A	B	C	K'	D	LATITUD	LONGITUD
T. C. Zacatecas - Durango	0.00	3	1	9803	1.7	64.4	4.0	8.9	3.8	10.5	2.3	3.5	0.9	66.1	4.0	29.9	0.077	0.507	22.935898	-102.688607
T. C. Zacatecas - Durango	0.00	3	2	10065	1.9	64.1	4.4	8.8	4.0	10.5	2.0	3.5	0.8	66.0	4.4	29.6	0.072	0.507	22.935867	-102.688806
Plaza de Cobro Calera Victor Rosales	0.50	2	1	8593	12.5	60.2	0.2	7.0	0.0	12.6	2.6	4.9	0.0	72.7	0.2	27.1	0.085	0.500	22.941860	-102.689827
Plaza de Cobro Calera Victor Rosales	0.50	2	2	8593	12.5	60.2	0.2	7.0	0.0	12.6	2.6	4.9	0.0	72.7	0.2	27.1	0.085	0.500	22.941860	-102.689827
T. C. Calera de Victor Rosales - Santiagoullo	2.50	3	1	8855	1.9	65.5	5.0	9.4	4.0	9.1	2.6	2.0	0.5	67.4	5.0	27.6	0.069	0.507	22.955482	-102.692599
T. C. Calera de Victor Rosales - Santiagoullo	2.50	3	2	8610	1.8	66.3	5.0	8.9	4.3	8.6	2.2	2.2	0.7	68.1	5.0	26.9	0.081	0.507	22.955182	-102.692738
T. C. Zacatecas - Durango	12.20	1	1	10306	1.8	64.5	3.9	9.0	4.2	10.3	2.3	3.4	0.6	66.3	3.9	29.8	0.086	0.505	23.005646	-102.744195
T. C. Zacatecas - Durango	12.20	1	2	10516	1.8	63.5	3.9	9.5	4.6	10.4	2.5	3.0	0.8	65.3	3.9	30.8	0.088	0.505	23.005509	-102.744312

32 CARR: Calera de Víctor Rosales - Santiagoullo

CLAVE: 32016

RUTA: ZAC-016

AÑO: 2023

LUGAR	ESTACION				CLASIFICACION VEHICULAR EN PORCIENTO										COORDENADAS					
	KM	TE	SC	TDPA	M	A	B	C2	C3	T3S2	T3S3	T3S2R4	OTROS	A	B	C	K'	D	LATITUD	LONGITUD
Calera de Víctor Rosales	0.00	3	0	4693	11.0	66.8	2.5	12.8	1.8	3.0	1.6	0.3	0.2	77.8	2.5	19.7	0.083	0.516	22.960756	-102.681763
T. C. Fresnillo - Ent. Bañón	23.60																			

33 CARR: Cieneguillas - Zacatecas

CLAVE: 32579

RUTA: ZAC

AÑO: 2023

LUGAR	ESTACION				CLASIFICACION VEHICULAR EN PORCIENTO										COORDENADAS					
	KM	TE	SC	TDPA	M	A	B	C2	C3	T3S2	T3S3	T3S2R4	OTROS	A	B	C	K'	D	LATITUD	LONGITUD
T. C. Guadalajara - Zacatecas	0.00	3	0	3026	1.7	78.8	0.3	14.5	1.7	2.4	0.4	0.1	0.1	80.5	0.3	19.2	0.085	0.546	22.760574	-102.654264
X. C. Libramiento de Guadalupe - Zacatecas	7.70	3	1	13097	2.9	77.3	2.2	9.8	3.5	3.3	0.5	0.3	0.2	80.2	2.2	17.6	0.084	0.509	22.756623	-102.590632
X. C. Libramiento de Guadalupe - Zacatecas	7.70	3	2	13564	3.3	76.7	2.2	9.9	3.4	3.4	0.6	0.3	0.2	80.0	2.2	17.8	0.112	0.509	22.756751	-102.590585
Zacatecas	9.33																			

ZACATECAS

34 CARR: Corral de Piedras - Tlaltenango

CLAVE: 32579

RUTA: ZAC

AÑO: 2023

LUGAR	ESTACION				CLASIFICACION VEHICULAR EN PORCIENTO										COORDENADAS					
	KM	TE	SC	TDPA	M	A	B	C2	C3	T3S2	T3S3	T3S2R4	OTROS	A	B	C	K'	D	LATITUD	LONGITUD
T. C. Guadalajara - Zacatecas	0.00	3	0	822	1.9	73.7	0.9	20.1	1.3	1.8	0.3	0.0	0.0	75.6	0.9	23.5	0.081	0.503	21.619393	-103.048224
Tlaltenango	57.10	1	0	1458	11.1	80.3	0.5	4.4	0.8	2.4	0.5	0.0	0.0	91.4	0.5	8.1	0.083	0.518	21.768346	-103.282095

35 CARR: Ent. Ojo Caliente - Ent. Ojuelos de Jalisco

CLAVE: 00126

RUTA: ZAC

AÑO: 2023

LUGAR	ESTACION				CLASIFICACION VEHICULAR EN PORCIENTO										COORDENADAS					
	KM	TE	SC	TDPA	M	A	B	C2	C3	T3S2	T3S3	T3S2R4	OTROS	A	B	C	K'	D	LATITUD	LONGITUD
T. C. Aguascalientes - Zacatecas	0.00	3	0	3323	3.6	74.4	1.6	17.3	1.4	1.7	0.0	0.0	0.0	78.0	1.6	20.4	0.098	0.524	22.604200	-102.240792
Gral. Pánfilo Natera	16.00	3	0	2028	4.1	79.6	0.7	13.5	0.7	1.2	0.2	0.0	0.0	83.7	0.7	15.6	0.089	0.515	22.651911	-102.103436
Lim. Edos. Term. Zac. Ppia. Jal.	134.00																			
T. C. San Luis Potosí - Lagos de Moreno	137.00																			

36 CARR: Fresnillo - Ent. Bañón

CLAVE: 32070

RUTA: ZAC

AÑO: 2023

LUGAR	ESTACION				CLASIFICACION VEHICULAR EN PORCIENTO										COORDENADAS					
	KM	TE	SC	TDPA	M	A	B	C2	C3	T3S2	T3S3	T3S2R4	OTROS	A	B	C	K'	D	LATITUD	LONGITUD
T. C. Zacatecas - Durango	0.00																			
X. Lib. Fresnillo (Cuota)	2.40	3	1	5008	3.7	80.8	0.9	11.9	0.9	0.9	0.5	0.3	0.1	84.5	0.9	14.6	0.081	0.504	23.177960	-102.822945
X. Lib. Fresnillo (Cuota)	2.40	3	2	4924	3.8	81.1	0.9	11.7	0.9	0.8	0.5	0.2	0.1	84.9	0.9	14.2	0.073	0.504	23.178078	-102.822968
T. Der. Víctor Rosales	23.80	1	0	3014	8.5	73.6	2.1	7.4	3.9	1.7	2.3	0.4	0.1	82.1	2.1	15.8	0.093	0.518	23.143872	-102.666084
T. Der. Víctor Rosales	23.80	3	0	2014	5.2	69.4	2.7	13.2	2.5	4.9	1.6	0.5	0.0	74.6	2.7	22.7	0.095	0.509	23.144094	-102.646340
González Ortega Bañón	45.80	1	0	2114	7.7	68.0	2.3	15.0	4.1	1.9	0.7	0.2	0.1	75.7	2.3	22.0	0.088	0.517	23.176594	-102.481247
T. C. Ent. Morelos - Saltillo	49.00	1	0	2651	7.8	66.3	2.1	15.8	4.9	2.1	0.7	0.2	0.1	74.1	2.1	23.8	0.094	0.510	23.153714	-102.417521

37 CARR: Fresnillo - Plateros

CLAVE: 32022

RUTA: ZAC-022

AÑO: 2023

LUGAR	ESTACION				CLASIFICACION VEHICULAR EN PORCIENTO										COORDENADAS					
	KM	TE	SC	TDPA	M	A	B	C2	C3	T3S2	T3S3	T3S2R4	OTROS	A	B	C	K'	D	LATITUD	LONGITUD
Fresnillo (Lateral)	0.00	3	1	105	38.2	50.9	4.5	4.2	1.1	1.1	0.0	0.0	0.0	89.1	4.5	6.4	0.221	1.000	23.203165	-102.855400
Fresnillo (Central)	0.00	3	1	4709	6.3	81.3	0.9	9.2	1.4	0.5	0.2	0.1	0.1	87.6	0.9	11.5	0.087	1.000	23.203687	-102.855339
Fresnillo (Central)	0.00	3	2	4726	7.9	73.1	1.6	13.7	1.6	0.1	1.6	0.3	0.1	81.0	1.6	17.4	0.088	1.000	23.203826	-102.855713
Plateros	4.90																			

ZACATECAS

38 CARR: Guadalupe - Ent. Cuauhtémoc

CLAVE: 00579

RUTA: ZAC-118

AÑO: 2023

LUGAR	ESTACION				CLASIFICACION VEHICULAR EN PORCIENTO										COORDENADAS					
	KM	TE	SC	TDPA	M	A	B	C2	C3	T3S2	T3S3	T3S2R4	OTROS	A	B	C	K'	D	LATITUD	LONGITUD
T. C. Libramiento de Guadalupe - Zacatecas (Baja)	0.00	3	1	3299	3.0	84.0	0.7	9.2	1.2	1.0	0.6	0.2	0.1	87.0	0.7	12.3	0.087	0.532	22.736100	-102.496281
T. C. Libramiento de Guadalupe - Zacatecas (Alta)	0.00	3	1	8435	3.0	89.8	0.5	4.5	0.6	0.8	0.4	0.3	0.1	92.8	0.5	6.7	0.088	0.527	22.735752	-102.496125
T. C. Libramiento de Guadalupe - Zacatecas (Baja)	0.00	3	2	2907	2.8	83.8	1.0	9.1	1.3	1.0	0.6	0.3	0.1	86.6	1.0	12.4	0.095	0.532	22.736244	-102.496020
T. C. Libramiento de Guadalupe - Zacatecas (Alta)	0.00	3	2	9092	3.0	90.3	0.6	4.3	0.5	0.6	0.3	0.2	0.2	93.3	0.6	6.1	0.099	0.527	22.736109	-102.496073
La Cieneguila	3.00																			
T. C. Ent. Cuauhtémoc - Ent. Osiris Cuota	39.31	3	0	1704	0.9	86.0	0.6	11.0	0.6	0.8	0.1	0.0	0.0	86.9	0.6	12.5	0.074	0.545	22.485206	-102.360157

39 CARR: Ramal a Loreto

CLAVE: 32067

RUTA: ZAC

AÑO: 2023

LUGAR	ESTACION				CLASIFICACION VEHICULAR EN PORCIENTO										COORDENADAS					
	KM	TE	SC	TDPA	M	A	B	C2	C3	T3S2	T3S3	T3S2R4	OTROS	A	B	C	K'	D	LATITUD	LONGITUD
T. C. Providencia - Luis Moya	0.00	3	0	2257	2.3	77.0	2.2	11.4	2.2	2.8	1.4	0.6	0.1	79.3	2.2	18.5	0.098	0.550	22.390780	-102.239071
Loreto	32.30																			

40 CARR: Ramal a Nochistlán

CLAVE: 32545

RUTA: ZAC

AÑO: 2023

LUGAR	ESTACION				CLASIFICACION VEHICULAR EN PORCIENTO										COORDENADAS					
	KM	TE	SC	TDPA	M	A	B	C2	C3	T3S2	T3S3	T3S2R4	OTROS	A	B	C	K'	D	LATITUD	LONGITUD
T. C. Tepatitlán - Jaralillo	0.00	3	1	2274	6.5	80.0	1.4	9.6	1.7	0.5	0.1	0.2	0.0	86.5	1.4	12.1	0.105	0.502	21.355445	-102.794253
T. C. Tepatitlán - Jaralillo	0.00	3	2	2290	6.6	79.6	1.8	9.4	1.7	0.5	0.1	0.3	0.0	86.2	1.8	12.0	0.107	0.502	21.355265	-102.793983
Nochistlán	5.70	1	1	2970	6.9	79.5	1.8	10.1	1.1	0.3	0.2	0.1	0.0	86.4	1.8	11.8	0.104	0.514	21.356347	-102.819798
Nochistlán	5.70	1	2	2813	6.7	80.0	1.7	9.9	1.2	0.3	0.1	0.1	0.0	86.7	1.7	11.6	0.104	0.514	21.356240	-102.819830

41 CARR: Ramal a San Pedro Piedra Gorda

CLAVE: 00553

RUTA: ZAC-AGS

AÑO: 2023

LUGAR	ESTACION				CLASIFICACION VEHICULAR EN PORCIENTO										COORDENADAS					
	KM	TE	SC	TDPA	M	A	B	C2	C3	T3S2	T3S3	T3S2R4	OTROS	A	B	C	K'	D	LATITUD	LONGITUD
T. C. Aguascalientes - Zacatecas	0.00	3	0	1477	1.8	81.8	2.2	11.3	1.0	1.6	0.3	0.0	0.0	83.6	2.2	14.2	0.089	0.521	22.465411	-102.263144
Lim. Edos. Term. Zac. Ppia. Ags.	5.00																			
Lim. Edos. Term. Ags. Ppia. Zac.	8.00																			
San Pedro Piedra Gorda	9.00	1	0	2525	5.6	82.9	0.8	8.4	0.5	1.4	0.4	0.0	0.0	88.5	0.8	10.7	0.078	0.520	22.452383	-102.338278

ZACATECAS

42 CARR: San Gil - Jarillas

CLAVE: 00527

RUTA: AGS-012-ZAC

AÑO: 2023

LUGAR	ESTACION				CLASIFICACION VEHICULAR EN PORCIENTO													COORDENADAS		
	KM	TE	SC	TDPA	M	A	B	C2	C3	T3S2	T3S3	T3S2R4	OTROS	A	B	C	K'	D	LATITUD	LONGITUD
T. C. Rincón de Romos - Ciénega Grande	0.00	3	0	2691	12.0	77.7	3.3	3.8	1.9	0.7	0.3	0.2	0.1	89.7	3.3	7.0	0.097	0.503	22.213199	-102.022906
Guadalupe de Atlas	5.40	1	0	2483	14.1	75.7	2.8	4.7	1.7	0.7	0.2	0.1	0.0	89.8	2.8	7.4	0.085	0.506	22.255840	-102.025626
Lim. Edos. Term. Ags. Ppia. Zac.	10.00																			
Lim. Edos. Term. Zac. Ppia. Ags.	11.30																			
Jarillas	12.00																			

43 CARR: San Rafael - Villa García

CLAVE: 00525

RUTA: AGS-ZAC

AÑO: 2023

LUGAR	ESTACION				CLASIFICACION VEHICULAR EN PORCIENTO													COORDENADAS		
	KM	TE	SC	TDPA	M	A	B	C2	C3	T3S2	T3S3	T3S2R4	OTROS	A	B	C	K'	D	LATITUD	LONGITUD
T. C. Ent. La Calavera - Ent. San Pedro	0.00	3	0	2692	8.9	84.1	2.1	3.0	0.7	0.9	0.2	0.1	0.0	93.0	2.1	4.9	0.087	0.507	22.116685	-102.011027
Lim. Edos. Term. Ags. Ppia. Zac.	3.00																			
Villa García	10.00	1	0	4191	7.7	80.7	1.4	6.3	1.0	2.6	0.3	0.0	0.0	88.4	1.4	10.2	0.084	0.523	22.135266	-101.970240

44 CARR: Santa Mónica - Pozo de Gamboa

CLAVE: 32568

RUTA: ZAC

AÑO: 2023

LUGAR	ESTACION				CLASIFICACION VEHICULAR EN PORCIENTO													COORDENADAS		
	KM	TE	SC	TDPA	M	A	B	C2	C3	T3S2	T3S3	T3S2R4	OTROS	A	B	C	K'	D	LATITUD	LONGITUD
T. C. Aguascalientes - Zacatecas	0.00	3	0	7477	4.1	75.4	2.9	9.7	3.2	2.7	1.3	0.5	0.2	79.5	2.9	17.6	0.089	0.517	22.762272	-102.422673
Tacoaleche	7.60	3	0	3922	5.0	72.8	2.1	13.9	2.6	1.9	1.4	0.2	0.1	77.8	2.1	20.1	0.099	0.514	22.831391	-102.398509
Pozo de Gamboa	34.50																			

45 CARR: Sombrerete - González Ortega

CLAVE: 32568

RUTA: ZAC

AÑO: 2023

LUGAR	ESTACION				CLASIFICACION VEHICULAR EN PORCIENTO													COORDENADAS		
	KM	TE	SC	TDPA	M	A	B	C2	C3	T3S2	T3S3	T3S2R4	OTROS	A	B	C	K'	D	LATITUD	LONGITUD
T. C. Zacatecas - Durango	0.00	3	0	1342	3.3	77.7	3.8	11.5	1.3	1.7	0.3	0.2	0.2	81.0	3.8	15.2	0.095	0.516	23.658629	-103.543643
González Ortega	38.70	1	0	1091	3.7	78.1	3.9	10.9	1.2	1.7	0.3	0.2	0.0	81.8	3.9	14.3	0.084	0.550	23.944689	-103.461972

46 CARR: Libramiento Noreste de Zacatecas (Cuota)

CLAVE: 32582

RUTA: ZAC-D

AÑO: 2023

LUGAR	ESTACION				CLASIFICACION VEHICULAR EN PORCIENTO													COORDENADAS		
	KM	TE	SC	TDPA	M	A	B	C2	C3	T3S2	T3S3	T3S2R4	OTROS	A	B	C	K'	D	LATITUD	LONGITUD
T. C. Aguascalientes - Zacatecas	0.00	3	0	6771	2.6	38.9	6.9	10.9	6.1	20.1	5.1	8.5	0.9	41.5	6.9	51.6	0.056	0.513	22.759130	-102.460160
T. C. Ent. Morelos - Saltillo	21.00	1	0	6309	1.6	43.2	7.5	14.6	7.4	13.7	3.6	7.5	0.9	44.8	7.5	47.7	0.072	0.511	22.851100	-102.610024

ZACATECAS

47 CARR: Tepatlitlán - Jaralillo

CLAVE: 00146

RUTA: MEX-JAL-ZAC

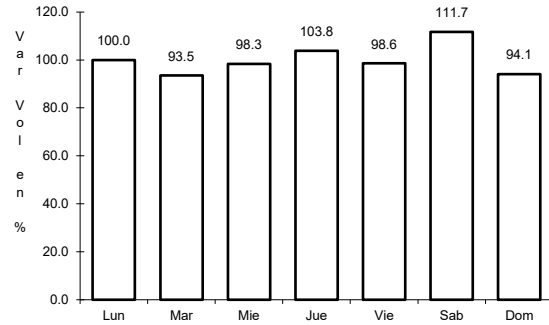
AÑO: 2023

LUGAR	ESTACION				CLASIFICACION VEHICULAR EN PORCIENTO										COORDENADAS					
	KM	TE	SC	TDPA	M	A	B	C2	C3	T3S2	T3S3	T3S2R4	OTROS	A	B	C	K'	D	LATITUD	LONGITUD
T. C. Lagos de Moreno - Guadalajara	0.00	3	0	10210	4.6	81.7	1.7	4.6	2.8	2.4	1.2	0.4	0.6	86.3	1.7	12.0	0.092	0.533	20.800581	-102.791912
T. Izq. Mezcala	22.40	3	0	1843	3.6	86.0	1.9	4.0	2.7	0.7	0.9	0.1	0.1	89.6	1.9	8.5	0.093	0.505	20.962873	-102.816440
Yahualica de González Gallo	57.40	3	1	1742	6.0	89.5	1.0	2.3	0.5	0.4	0.2	0.1	0.0	95.5	1.0	3.5	0.100	0.509	21.196021	-102.884800
Yahualica de González Gallo	57.40	3	2	1682	6.0	89.9	0.9	2.1	0.5	0.3	0.2	0.1	0.0	95.9	0.9	3.2	0.093	0.509	21.196004	-102.884887
T. Der. Mexicacán	72.45	3	0	1169	2.7	87.1	1.7	4.9	1.8	1.0	0.5	0.2	0.1	89.8	1.7	8.5	0.102	0.510	21.254503	-102.802767
Lim. Edos. Term. Jal. Ppia. Zac.	83.50																			
Lim. Edos. Term. Zac. Ppia. Jal.	106.00																			
Teocaltiche	111.00	1	0	3131	4.4	86.6	2.3	3.7	1.1	0.9	0.5	0.4	0.1	91.0	2.3	6.7	0.079	0.506	21.425791	-102.589495
Teocaltiche	111.00	3	0	3486	5.4	86.6	1.6	4.0	1.0	1.0	0.3	0.1	0.0	92.0	1.6	6.4	0.081	0.501	21.455208	-102.555870
T. C. León - Aguascalientes	157.00	1	0	3188	4.7	82.9	2.8	3.0	2.6	1.7	1.2	0.5	0.6	87.6	2.8	9.6	0.098	0.505	21.642698	-102.279122

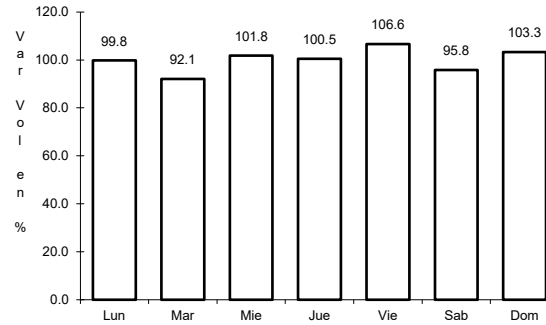
1 CARR: Aguascalientes - Jalpa

CLAVE: 00095

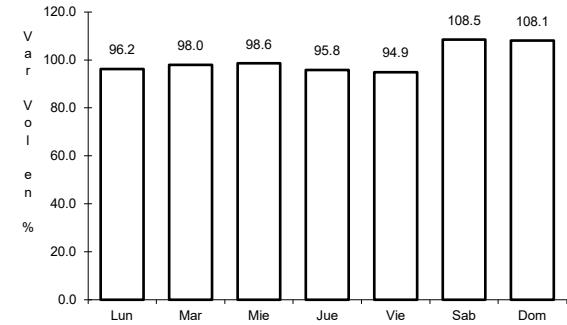
RUTA: MEX-070



Km: 0.00      Tipo: 3      Sent: 1



Km: 0.00      Tipo: 3      Sent: 2

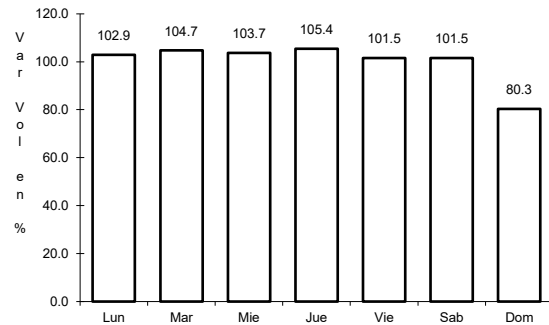


Km: 90.66      Tipo: 1      Sent: 0

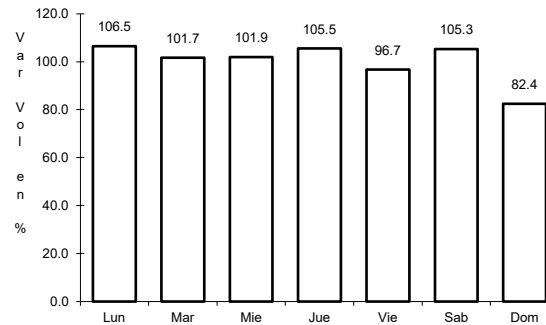
2 CARR: Aguascalientes - Zacatecas

CLAVE: 00524

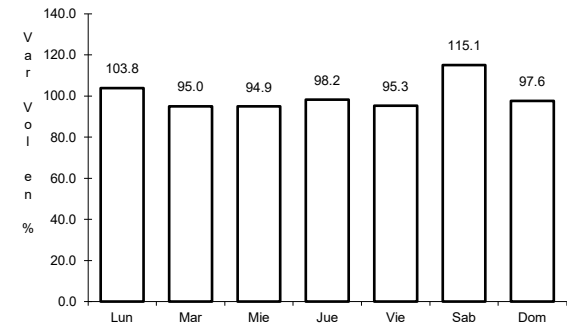
RUTA: MEX-045



Km: 6.00      Tipo: 1      Sent: 1



Km: 6.00      Tipo: 1      Sent: 2

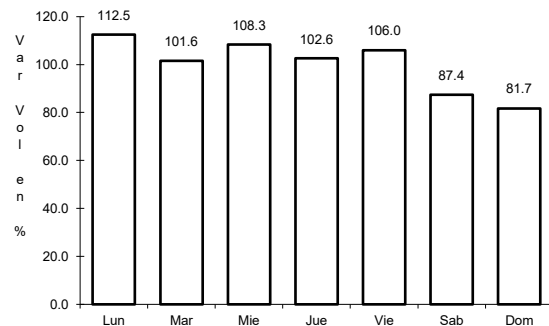


Km: 40.90      Tipo: 3      Sent: 0

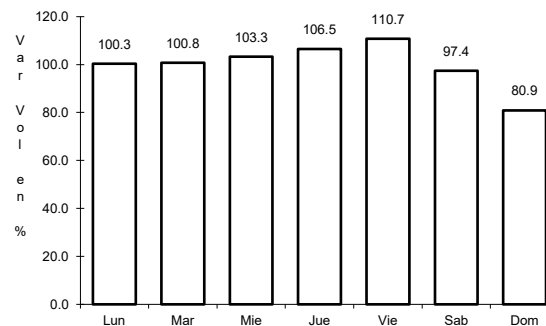
3 CARR: Blvd. Guadalupe - Zacatecas - La Escondida

CLAVE: 00544

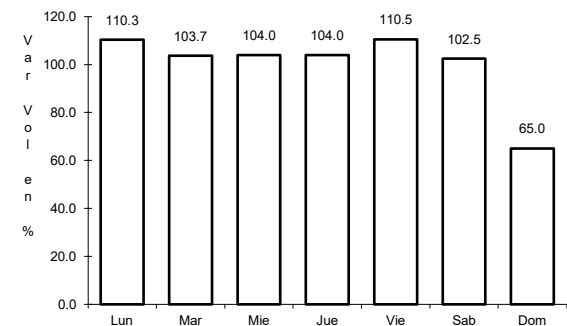
RUTA: MEX-045



Km: 7.70      Tipo: 1      Sent: 1



Km: 7.70      Tipo: 1      Sent: 2

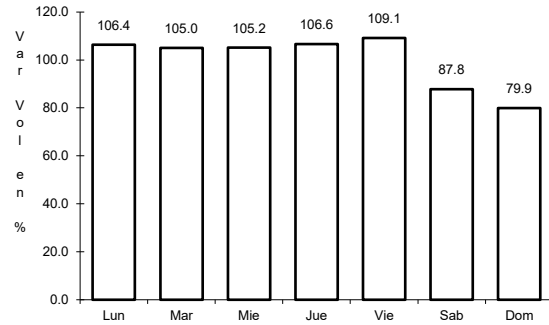


Km: 14.50      Tipo: 1      Sent: 1

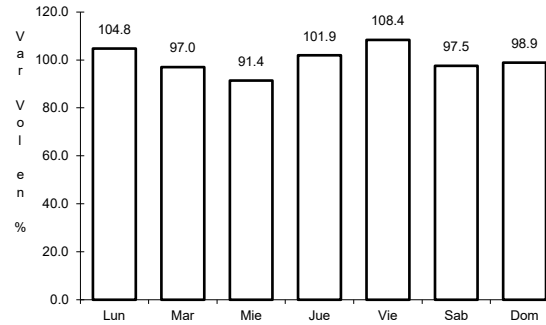
4 CARR: Carbonera - T. C. (Ent. Morelos - Saltillo)

CLAVE: 00218

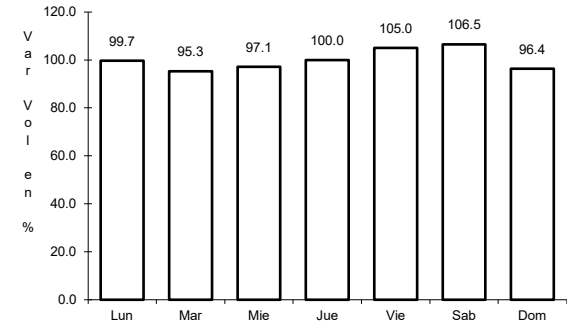
RUTA: MEX-062



Km: 0.00                      Tipo: 3                      Sent: 0



Km: 18.00                      Tipo: 1                      Sent: 0

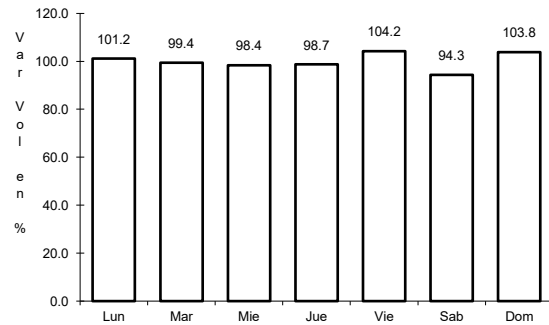


Km: 112.00                      Tipo: 1                      Sent: 0

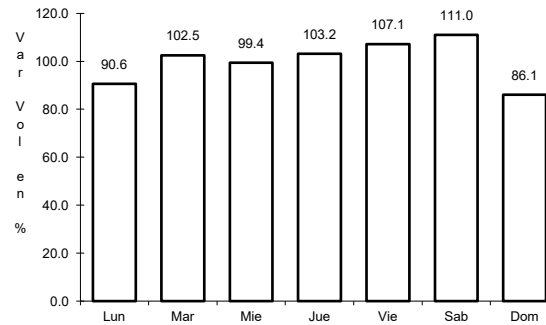
5 CARR: Ent. Cosío - Ent. Cuauhtémoc

CLAVE: 00579

RUTA: MEX-045



Km: 57.20                      Tipo: 3                      Sent: 0

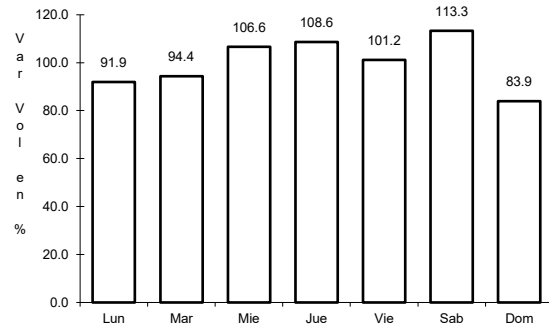


Km: 70.40                      Tipo: 1                      Sent: 0

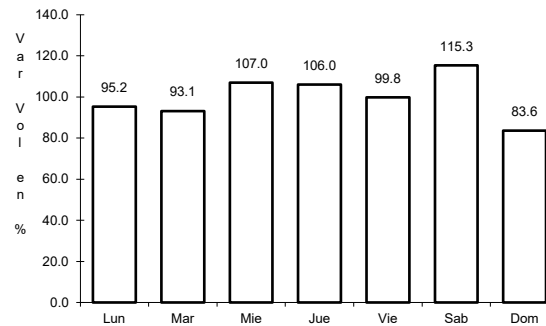
6 CARR: Ent. La Chicharrona - Cuencamá

CLAVE: 00152

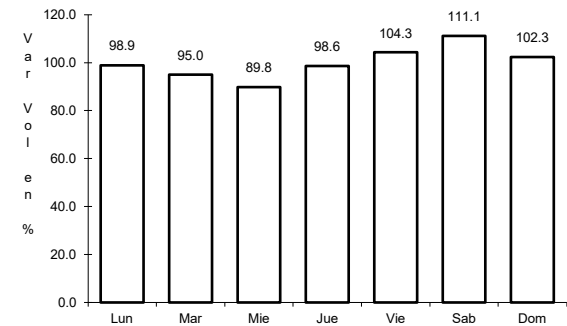
RUTA: MEX-049



Km: 0.00                      Tipo: 3                      Sent: 1



Km: 0.00                      Tipo: 3                      Sent: 2



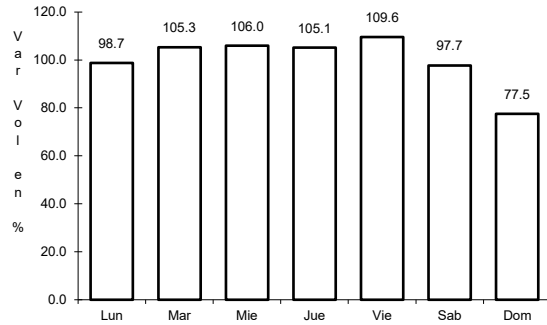
Km: 124.50                      Tipo: 1                      Sent: 0



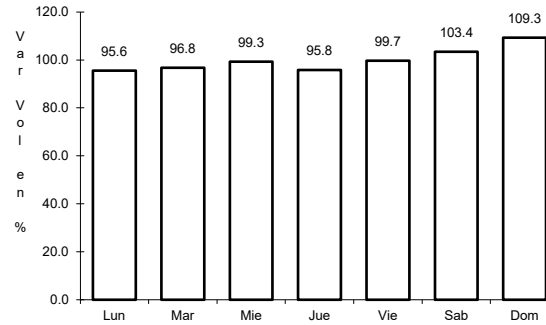
7 CARR: Ent. Morelos - Ent. Noria de Gringos

CLAVE: 00544

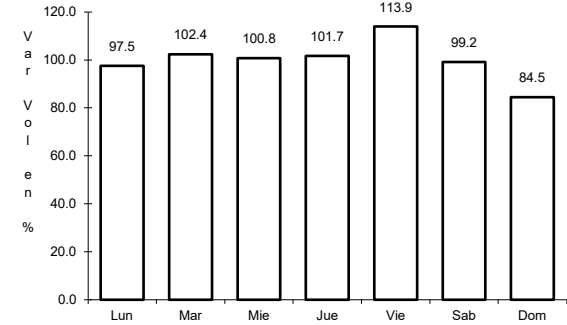
ruta: MEX-045



Km: 0.50      Tipo: 1      Sent: 1



Km: 0.50      Tipo: 1      Sent: 2

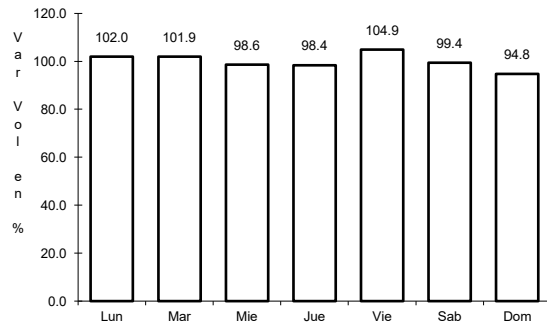


Km: 0.50      Tipo: 3      Sent: 0

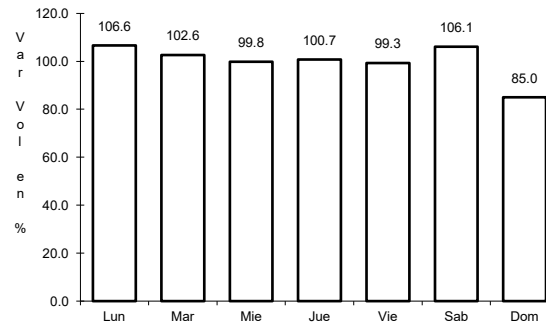
8 CARR: Ent. Morelos - Saltillo

CLAVE: 00149

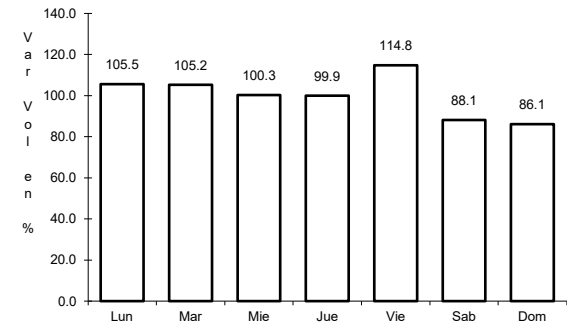
ruta: MEX-054



Km: 0.00      Tipo: 3      Sent: 1



Km: 0.00      Tipo: 3      Sent: 2

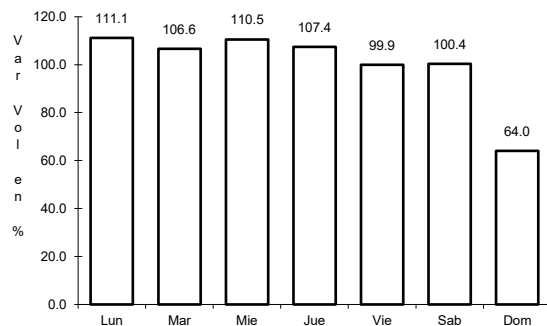


Km: 333.00      Tipo: 3      Sent: 1

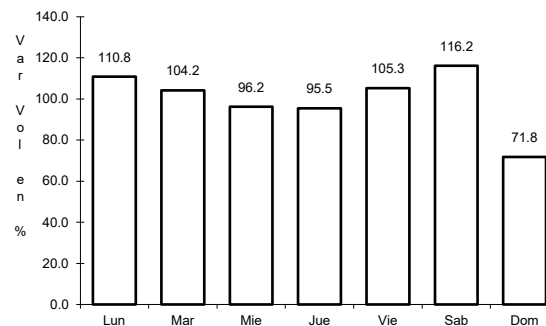
9 CARR: Ent. Rivier - San Marcos

CLAVE: 00285

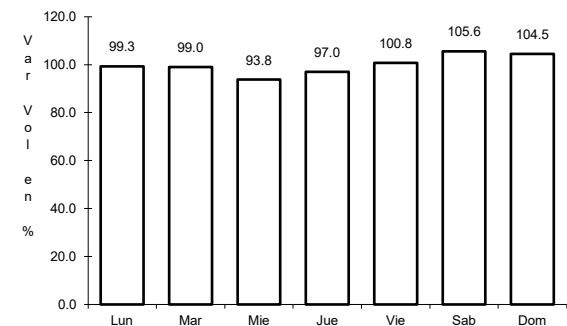
ruta: MEX-066



Km: 0.00      Tipo: 3      Sent: 1



Km: 0.00      Tipo: 3      Sent: 2

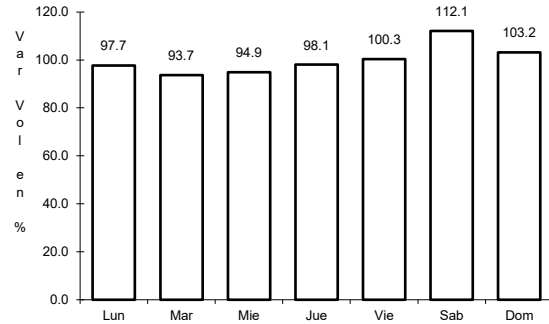


Km: 55.34      Tipo: 1      Sent: 0

10 CARR: Ent. Tesistán - Ent. Malpaso

CLAVE: 00584

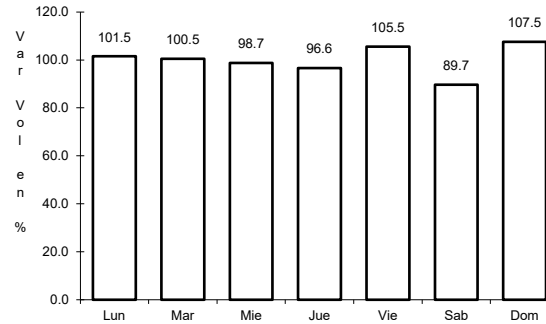
ruta: MEX-023



Km: 54.00

Tipo: 1

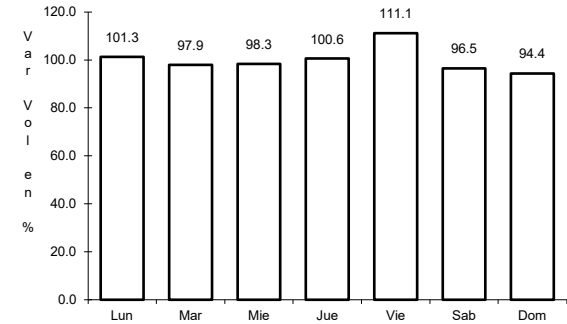
Sent: 0



Km: 275.00

Tipo: 1

Sent: 1



Km: 275.00

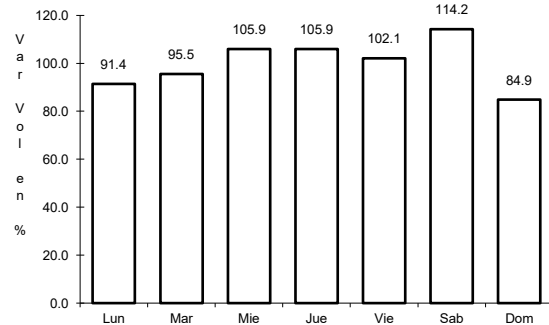
Tipo: 1

Sent: 2

11 CARR: Fresnillo - Valparaíso

CLAVE: 32547

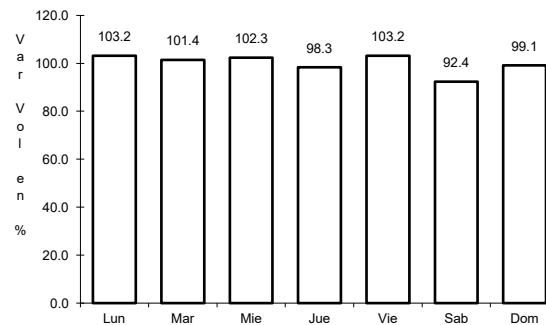
ruta: MEX-044



Km: 0.00

Tipo: 3

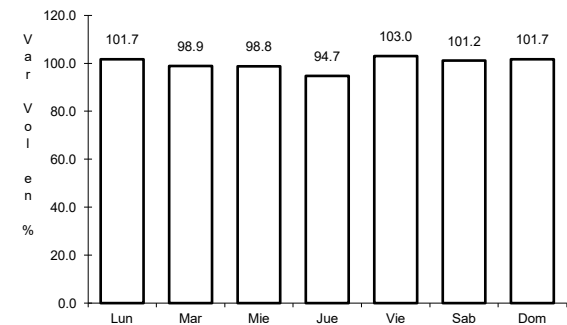
Sent: 0



Km: 45.00

Tipo: 3

Sent: 0



Km: 90.00

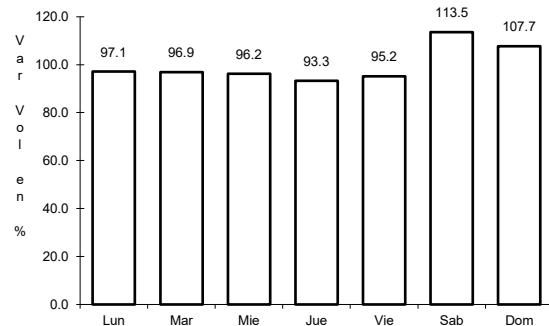
Tipo: 1

Sent: 0

12 CARR: Guadalajara - Zacatecas

CLAVE: 00150

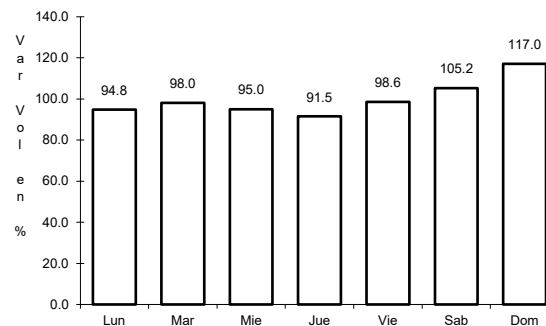
ruta: MEX-054



Km: 6.19

Tipo: 3

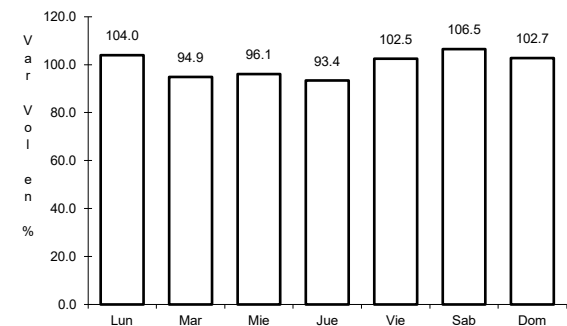
Sent: 1



Km: 6.19

Tipo: 3

Sent: 2



Km: 159.39

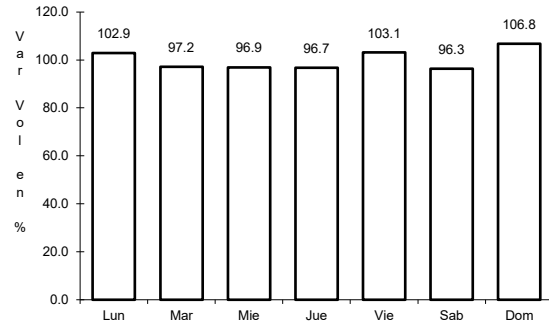
Tipo: 1

Sent: 0

13 CARR: Jerez - Fresnillo

CLAVE: 32542

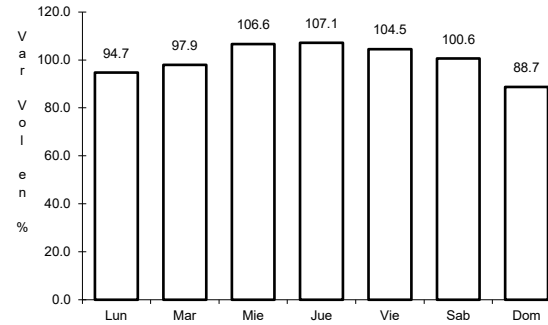
RUTA: MEX-023



Km: 0.00

Tipo: 3

Sent: 0



Km: 60.00

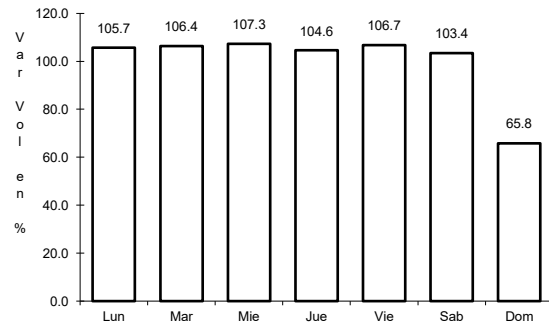
Tipo: 1

Sent: 0

14 CARR: Libramiento de Guadalupe - Zacatecas

CLAVE: 32582

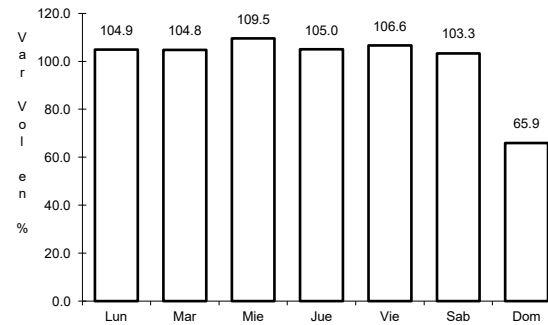
RUTA: MEX-045



Km: 13.00

Tipo: 3

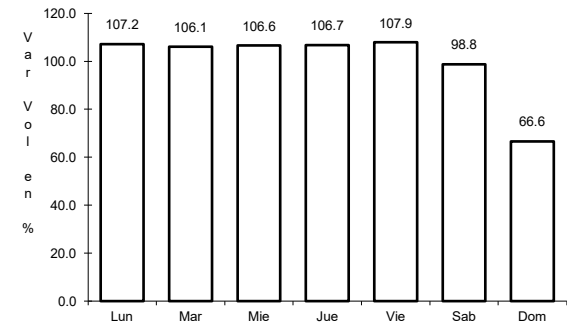
Sent: 1



Km: 13.00

Tipo: 3

Sent: 2



Km: 17.50

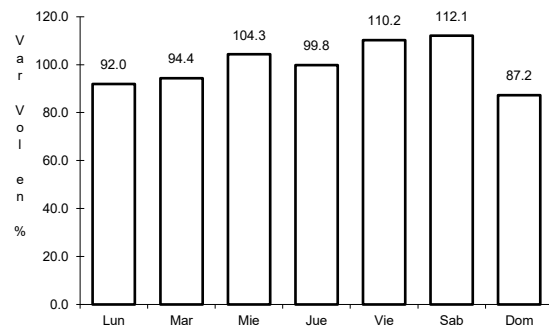
Tipo: 1

Sent: 1

15 CARR: Libramiento de Río Grande

CLAVE:

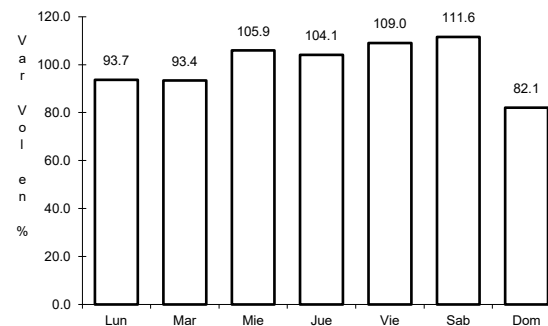
RUTA: MEX-049



Km: 55.90

Tipo: 3

Sent: 0



Km: 68.59

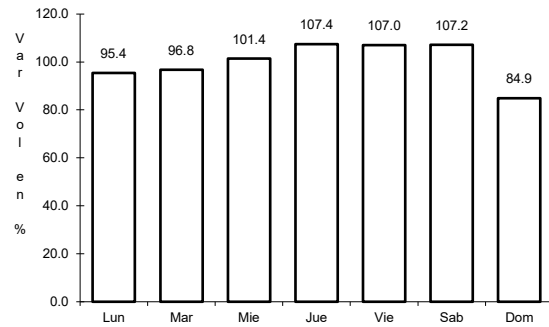
Tipo: 1

Sent: 0

16 CARR: Libramiento de Sombrerete

CLAVE:

RUTA: MEX-045



Km: 163.50

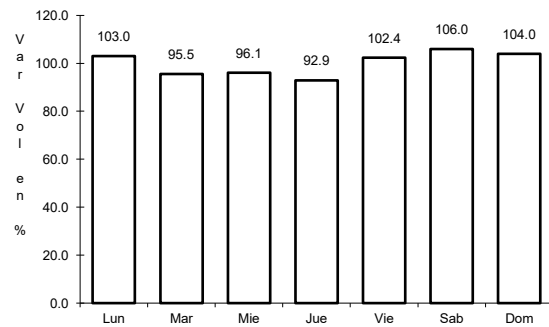
Tipo: 1

Sent: 0

17 CARR: Libramiento de Tabasco

CLAVE:

RUTA: MEX-054



Km: 190.10

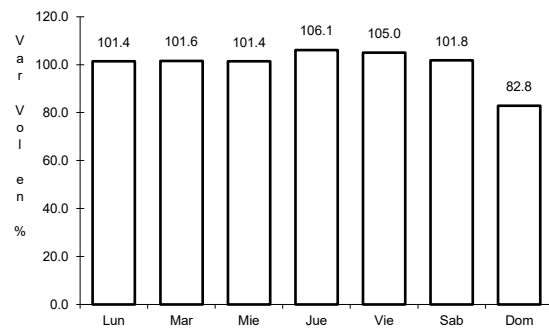
Tipo: 1

Sent: 0

18 CARR: Providencia - Luis Moya

CLAVE: 00112

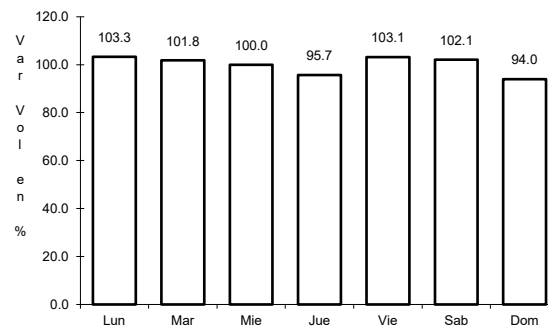
RUTA: MEX-071



Km: 0.00

Tipo: 3

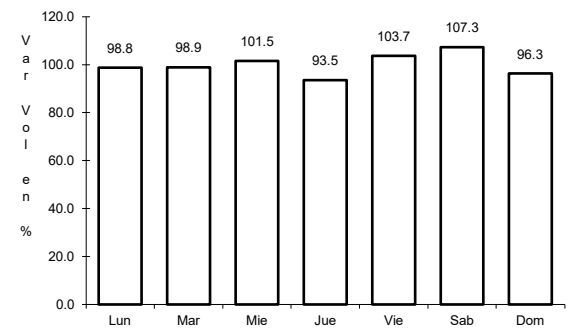
Sent: 0



Km: 21.22

Tipo: 3

Sent: 0



Km: 43.52

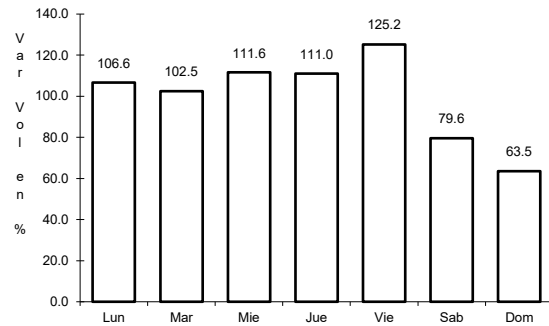
Tipo: 1

Sent: 0

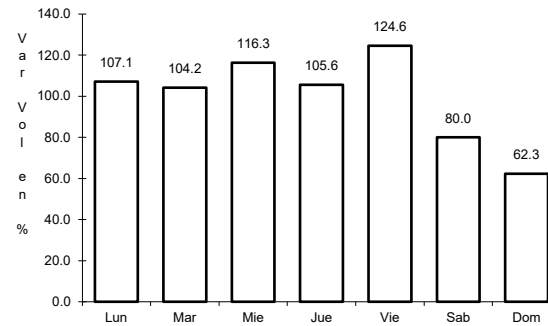
19 CARR: Ramal a Aeropuerto Zacatecas

CLAVE: 32546

RUTA: MEX-045



Km: 0.00      Tipo: 3      Sent: 1

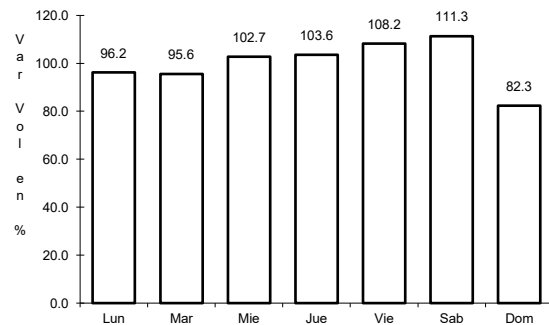


Km: 0.00      Tipo: 3      Sent: 2

20 CARR: Ramal a Concepción del Oro

CLAVE: 32565

RUTA: MEX-054

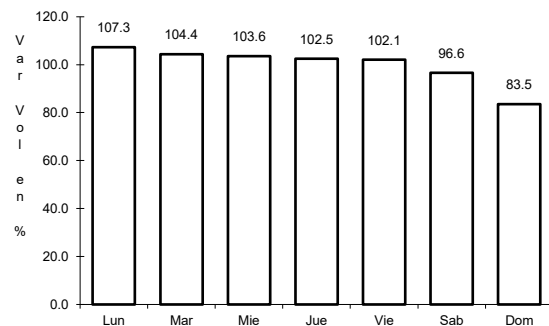


Km: 0.00      Tipo: 3      Sent: 0

21 CARR: Ramal a Francisco Murguía (Nieves)

CLAVE: 32541

RUTA: MEX-049

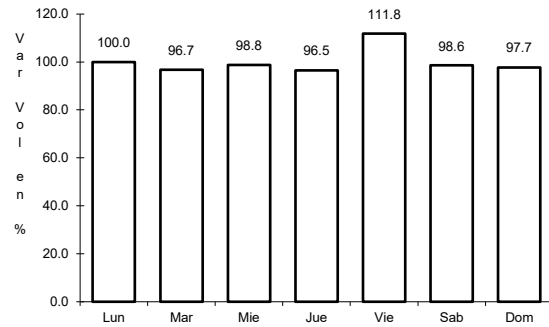


Km: 0.00      Tipo: 3      Sent: 0

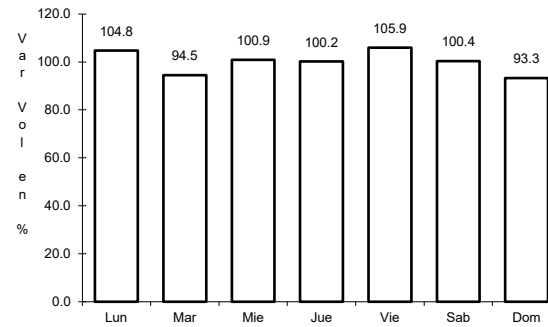
22 CARR: Ramal a Gral. Pánfilo Natera

CLAVE: 32559

ruta: MEX-049



Km: 0.00      Tipo: 3      Sent: 1

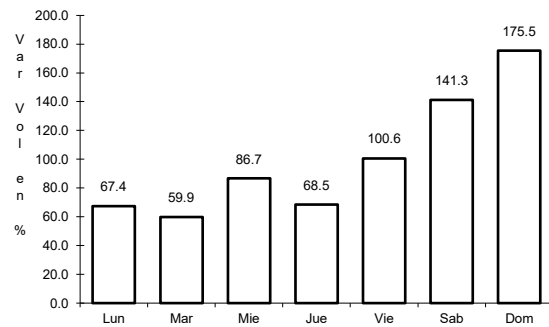


Km: 0.00      Tipo: 3      Sent: 2

23 CARR: Ramal a Ruinas de Chicomostoc

CLAVE: 00544

ruta: MEX-045

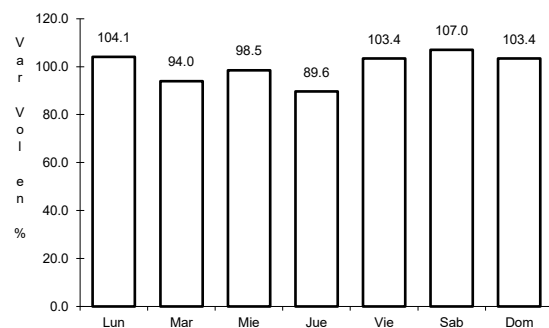


Km: 0.00      Tipo: 3      Sent: 0

24 CARR: Ramal a San Martín

CLAVE: 00544

ruta: MEX-045

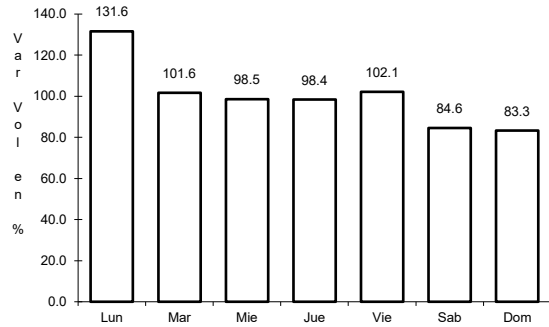


Km: 0.00      Tipo: 3      Sent: 0

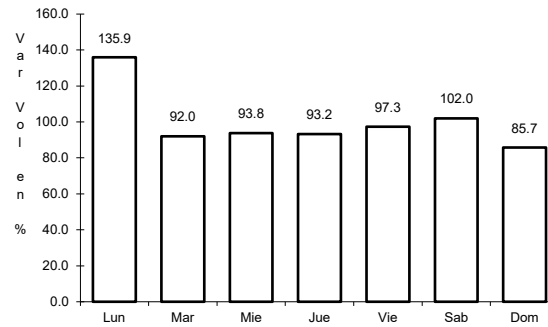
25 CARR: Ramal a Villa de Cos

CLAVE: 32564

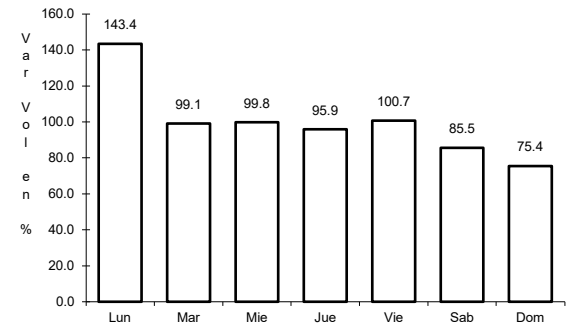
ruta: MEX-054



Km: 0.00      Tipo: 3      Sent: 1



Km: 0.00      Tipo: 3      Sent: 2

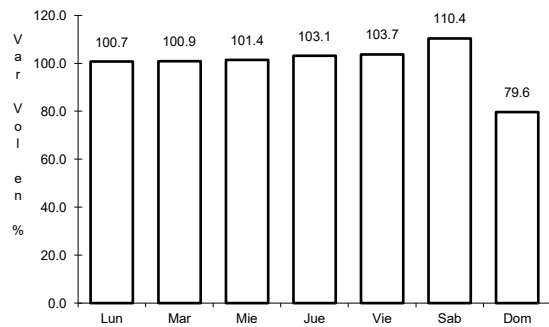


Km: 3.30      Tipo: 1      Sent: 1

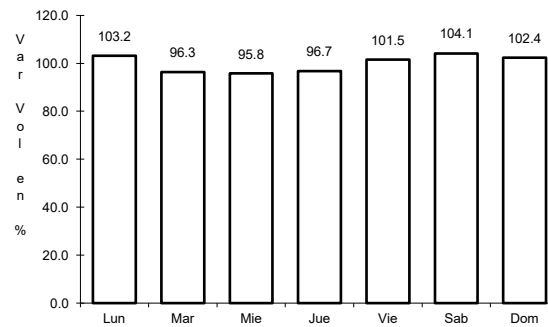
26 CARR: San Luis Potosí - Ent. Arcinas

CLAVE: 00134

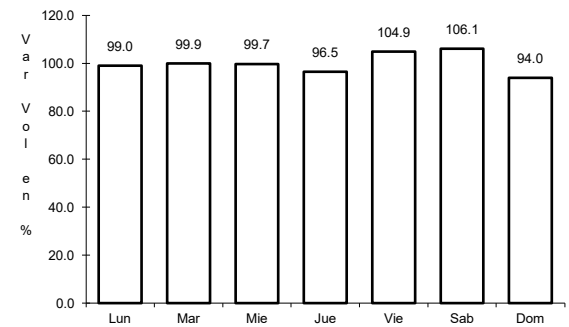
ruta: MEX-049



Km: 9.35      Tipo: 3      Sent: 1



Km: 9.35      Tipo: 3      Sent: 2

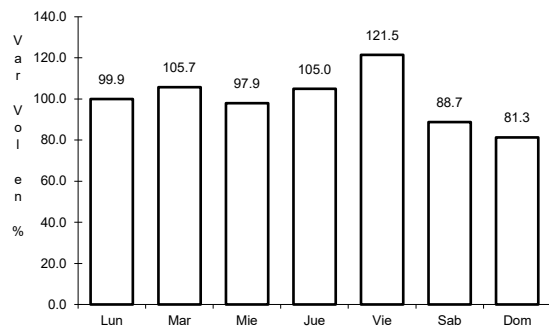


Km: 162.98      Tipo: 1      Sent: 1

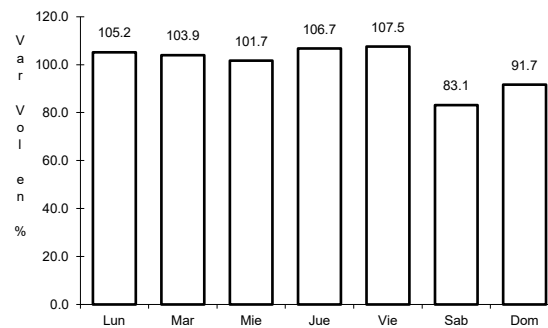
27 CARR: San Luis Potosí - Lagos de Moreno

CLAVE: 00133

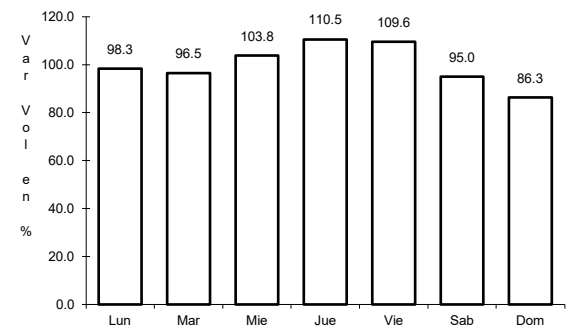
ruta: MEX-070-080



Km: 0.00      Tipo: 3      Sent: 1



Km: 0.00      Tipo: 3      Sent: 2

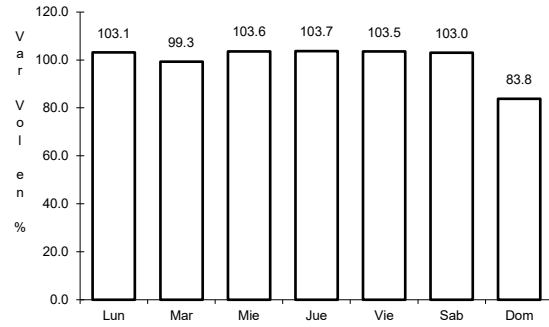


Km: 61.90      Tipo: 3      Sent: 0

28 CARR: Zacatecas - Durango

CLAVE: 00544

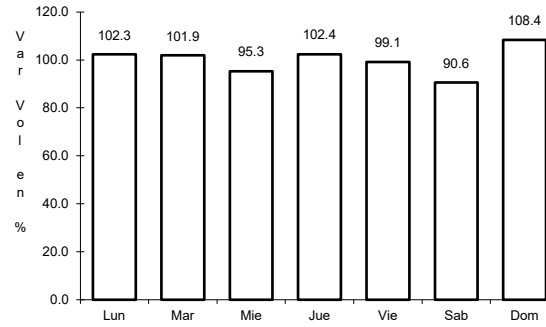
RUTA: MEX-045



Km: 6.40

Tipo: 3

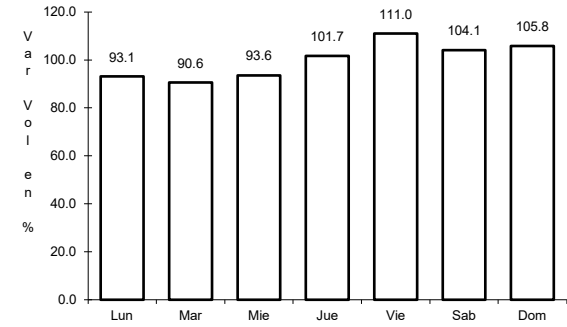
Sent: 1



Km: 6.40

Tipo: 3

Sent: 2



Km: 261.70

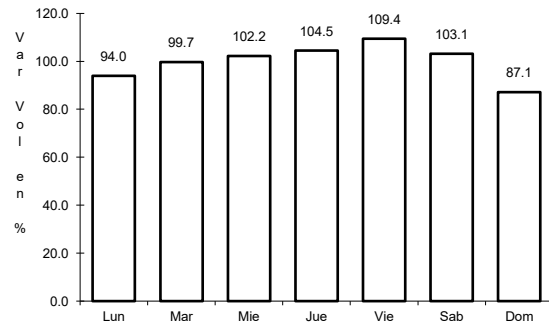
Tipo: 1

Sent: 0

29 CARR: Ent. Cuauhtémoc - Ent. Osiris (Cuota)

CLAVE: 32558

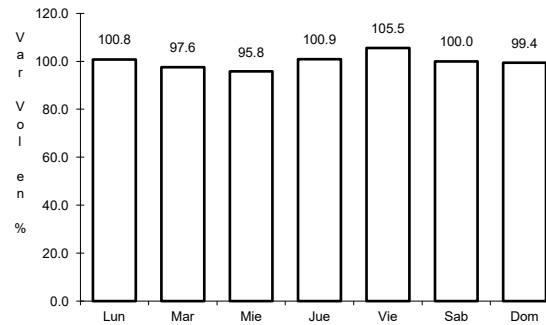
RUTA: MEX-045D



Km: 70.40

Tipo: 3

Sent: 0



Km: 103.40

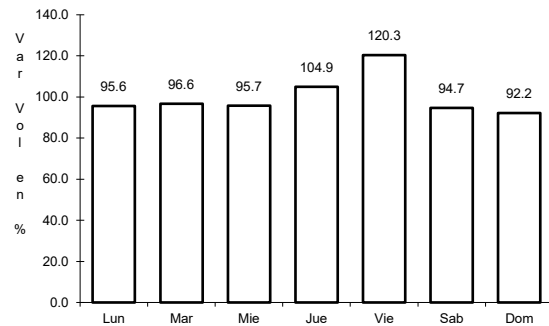
Tipo: 1

Sent: 0

30 CARR: Libramiento de Fresnillo (Cuota)

CLAVE: 32581

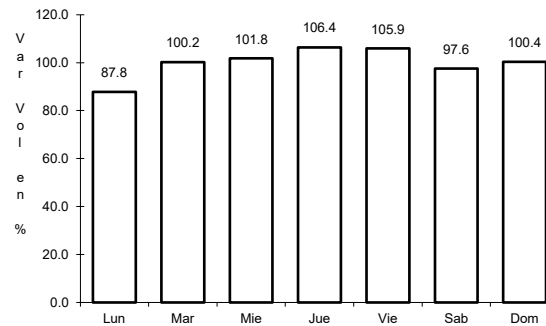
RUTA: MEX-045D



Km: 49.80

Tipo: 3

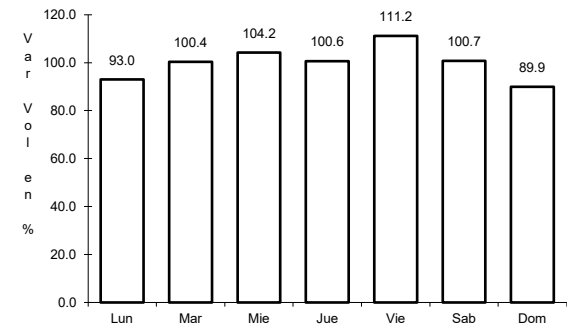
Sent: 1



Km: 49.80

Tipo: 3

Sent: 2



Km: 69.85

Tipo: 1

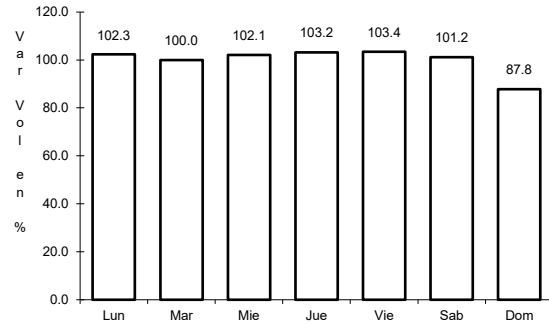
Sent: 1



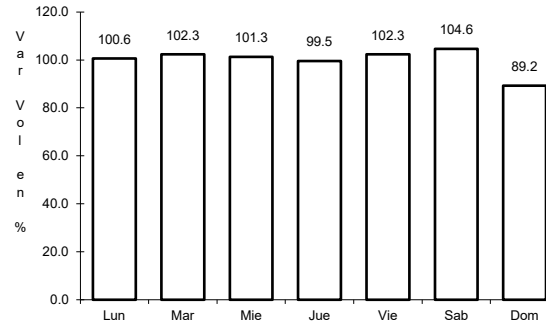
31 CARR: Libramiento de Víctor Rosales (Cuota)

CLAVE: 32015

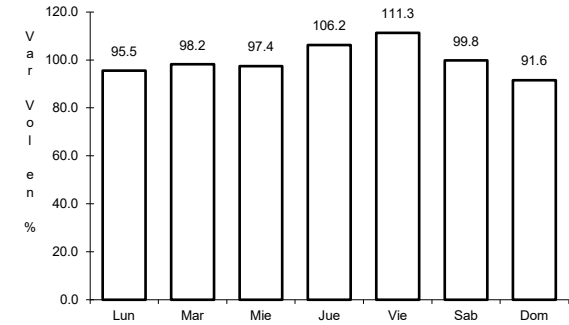
ruta: MEX-045D



Km: 0.00 Tipo: 3 Sent: 1



Km: 0.00 Tipo: 3 Sent: 2

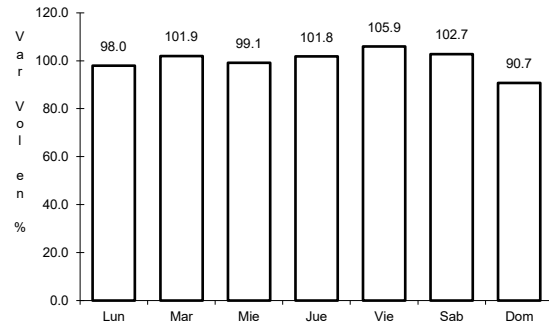


Km: 12.20 Tipo: 1 Sent: 1

32 CARR: Calera de Víctor Rosales - Santiaguillo

CLAVE: 32016

ruta: ZAC-016

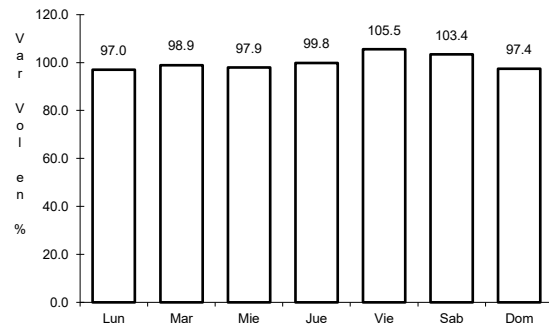


Km: 0.00 Tipo: 3 Sent: 0

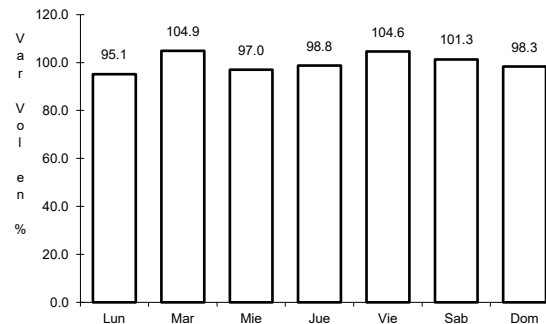
33 CARR: Cieneguillas - Zacatecas

CLAVE: 32579

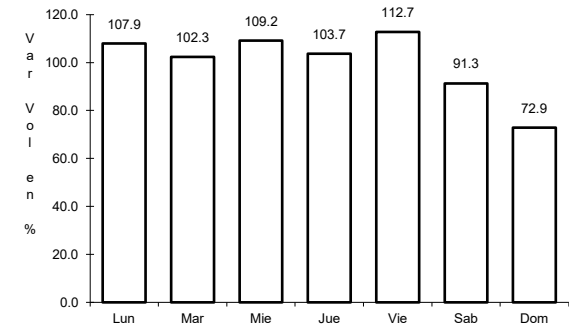
ruta: ZAC



Km: 0.00 Tipo: 3 Sent: 0



Km: 7.70 Tipo: 3 Sent: 1

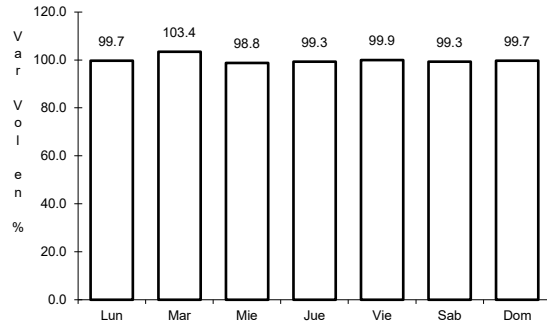


Km: 7.70 Tipo: 3 Sent: 2

34 CARR: Corral de Piedras - Tlaltenango

CLAVE: 32579

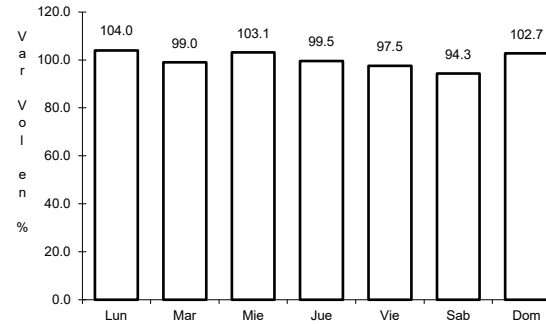
ruta: ZAC



Km: 0.00

Tipo: 3

Sent: 0



Km: 57.10

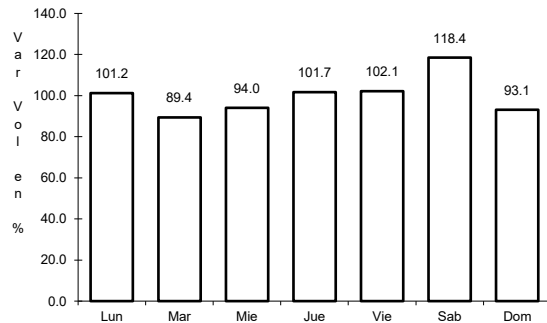
Tipo: 1

Sent: 0

35 CARR: Ent. Ojo Caliente - Ent. Ojuelos de Jalisco

CLAVE: 00126

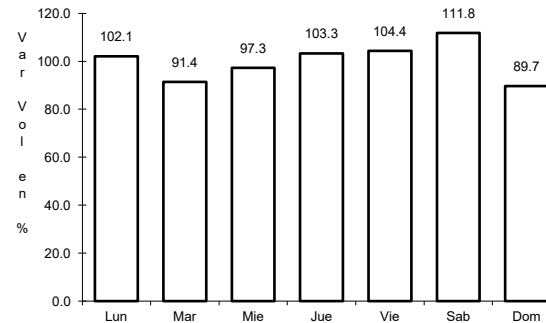
ruta: ZAC



Km: 0.00

Tipo: 3

Sent: 0



Km: 16.00

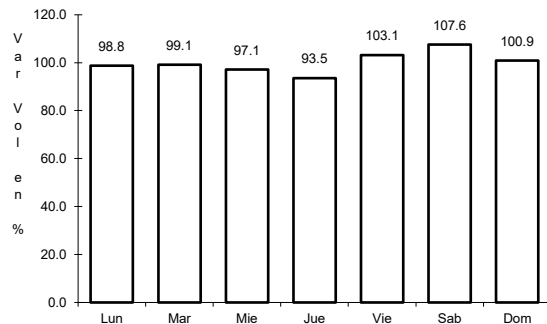
Tipo: 3

Sent: 0

36 CARR: Fresnillo - Ent. Bañón

CLAVE: 32070

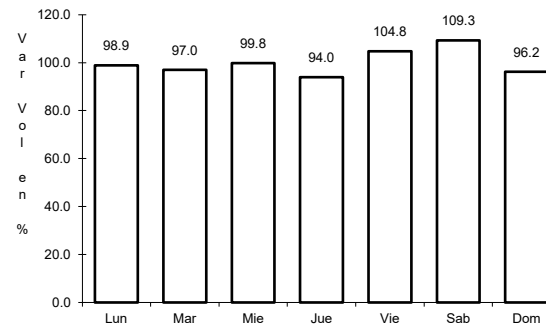
ruta: ZAC



Km: 2.40

Tipo: 3

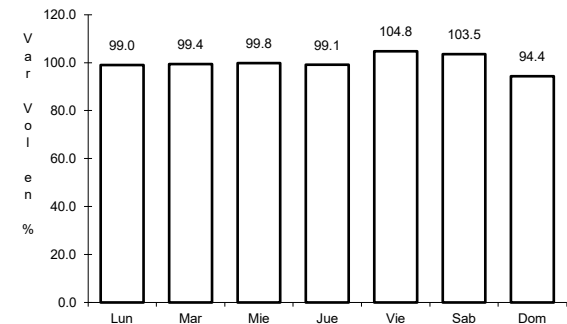
Sent: 1



Km: 2.40

Tipo: 3

Sent: 2



Km: 49.00

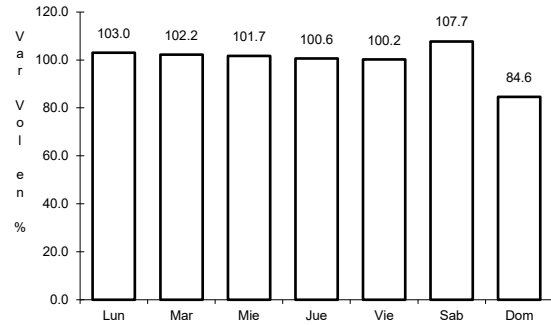
Tipo: 1

Sent: 0

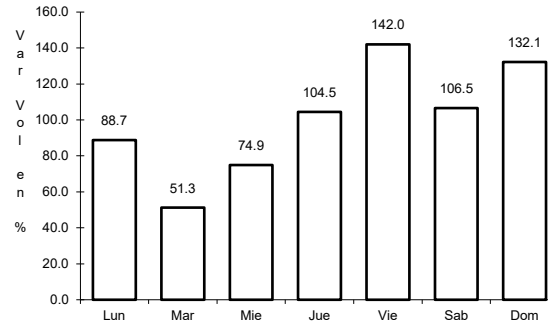
37 CARR: Fresnillo - Plateros

CLAVE: 32022

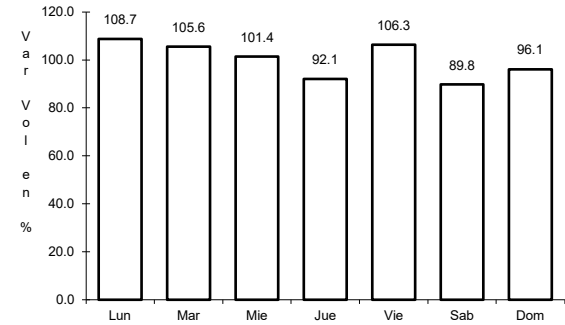
RUTA: ZAC-022



Km: 0.00      Tipo: 3      Sent: 1



Km: 0.00      Tipo: 3      Sent: 1

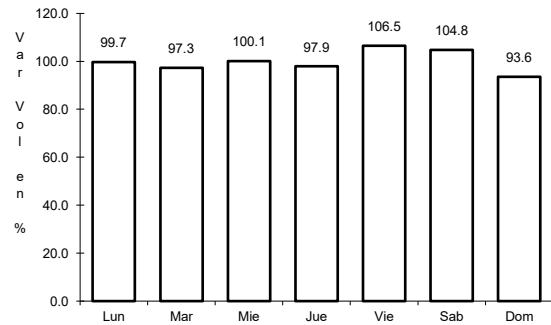


Km: 0.00      Tipo: 3      Sent: 2

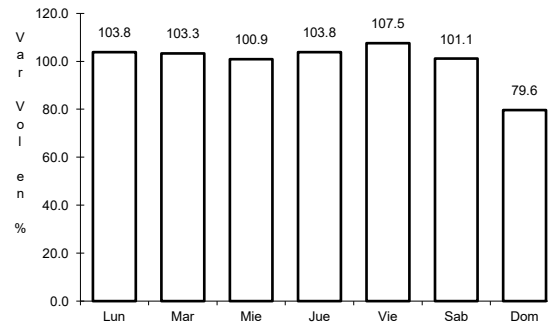
38 CARR: Guadalupe - Ent. Cuauhtémoc

CLAVE: 00579

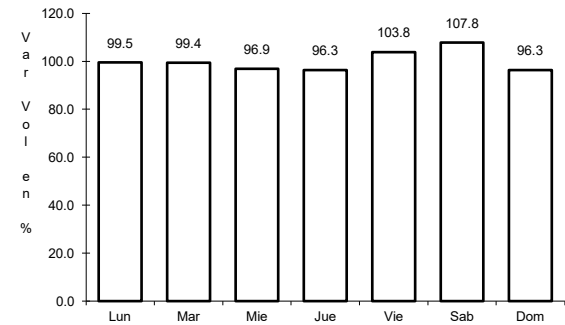
RUTA: ZAC-118



Km: 0.00      Tipo: 3      Sent: 1



Km: 0.00      Tipo: 3      Sent: 2

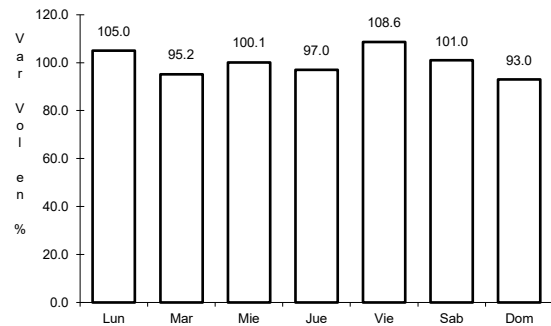


Km: 39.31      Tipo: 3      Sent: 0

39 CARR: Ramal a Loreto

CLAVE: 32067

RUTA: ZAC

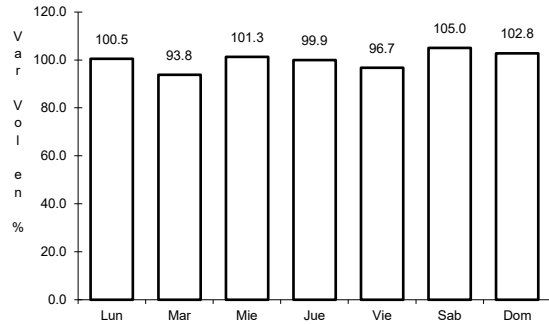


Km: 0.00      Tipo: 3      Sent: 0

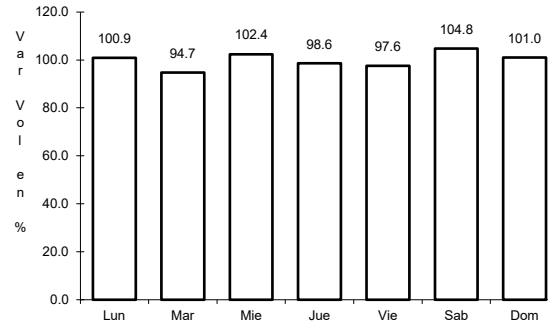
40 CARR: Ramal a Nochistlán

CLAVE: 32545

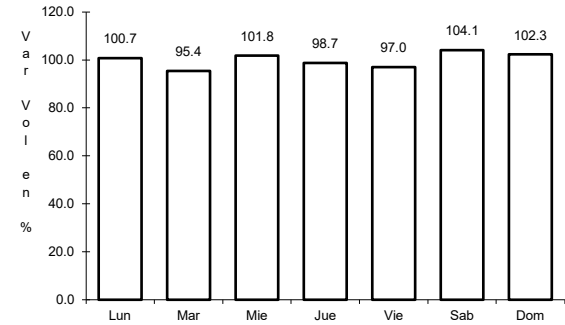
ruta: ZAC



Km: 0.00      Tipo: 3      Sent: 1



Km: 0.00      Tipo: 3      Sent: 2

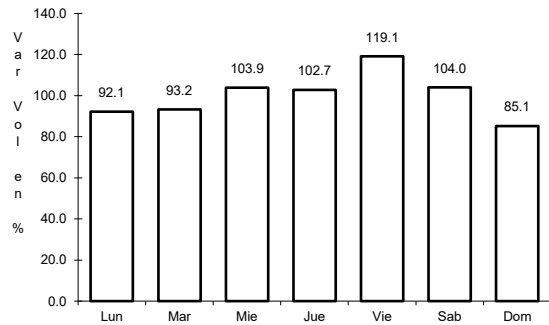


Km: 5.70      Tipo: 1      Sent: 1

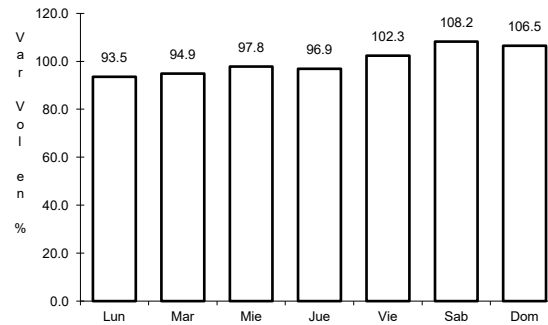
41 CARR: Ramal a San Pedro Piedra Gorda

CLAVE: 00553

ruta: ZAC-AGS



Km: 0.00      Tipo: 3      Sent: 0

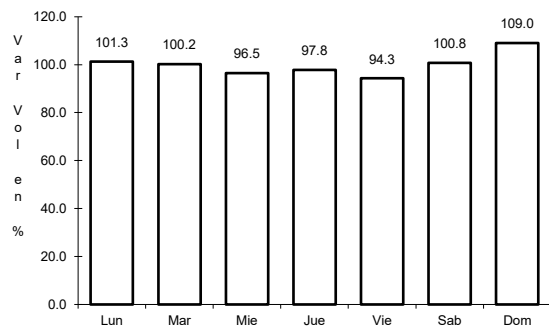


Km: 9.00      Tipo: 1      Sent: 0

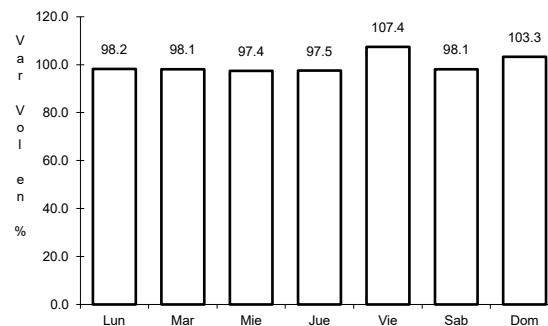
42 CARR: San Gil - Jarillas

CLAVE: 00527

ruta: AGS-012-ZAC



Km: 0.00      Tipo: 3      Sent: 0

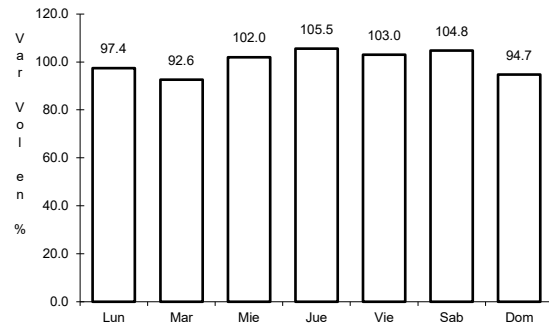


Km: 5.40      Tipo: 1      Sent: 0

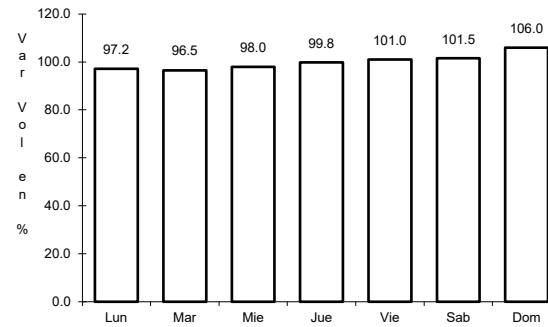
43 CARR: San Rafael - Villa García

CLAVE: 00525

RUTA: AGS-ZAC



Km: 0.00      Tipo: 3      Sent: 0

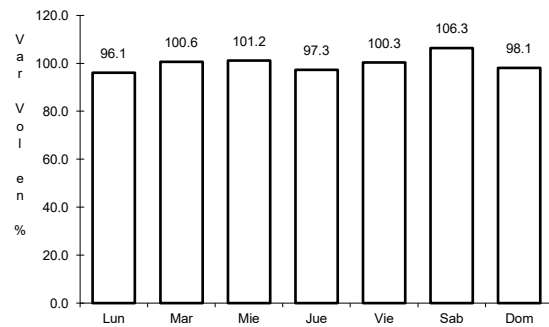


Km: 10.00      Tipo: 1      Sent: 0

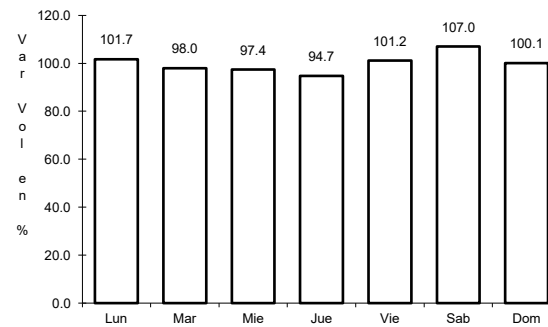
44 CARR: Santa Mónica - Pozo de Gamboa

CLAVE: 32568

RUTA: ZAC



Km: 0.00      Tipo: 3      Sent: 0

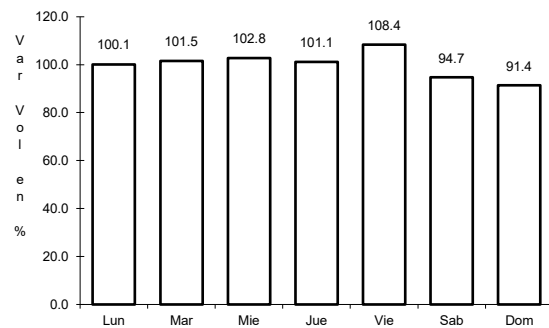


Km: 7.60      Tipo: 3      Sent: 0

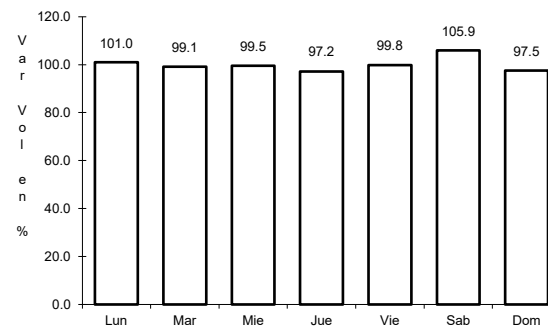
45 CARR: Sombrerete - González Ortega

CLAVE: 32568

RUTA: ZAC



Km: 0.00      Tipo: 3      Sent: 0

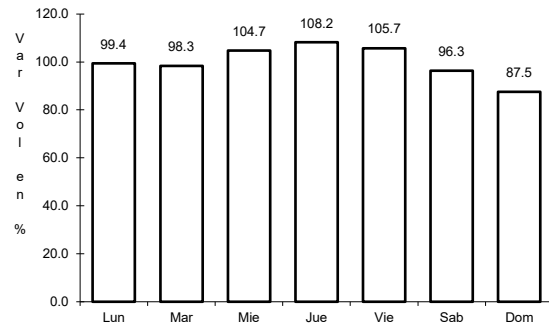


Km: 38.70      Tipo: 1      Sent: 0

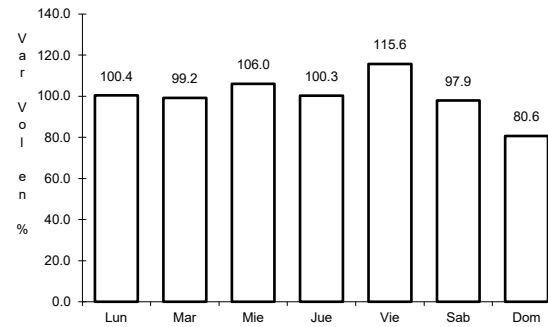
46 CARR: Libramiento Noreste de Zacatecas (Cuota)

CLAVE: 32582

ruta: ZAC-D



Km: 0.00 Tipo: 3 Sent: 0

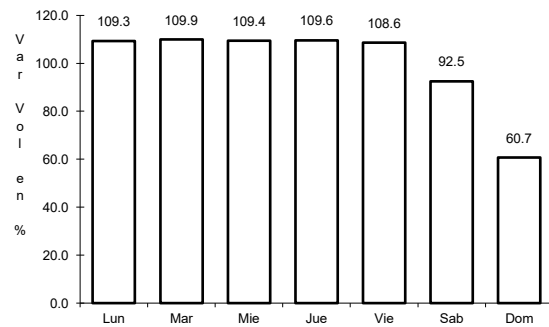


Km: 21.00 Tipo: 1 Sent: 0

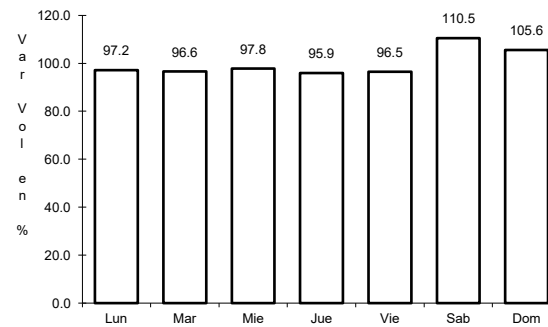
47 CARR: Tepatlán - Jaralillo

CLAVE: 00146

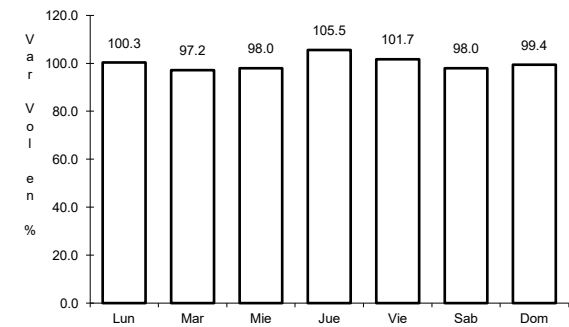
ruta: MEX-JAL-ZAC



Km: 0.00 Tipo: 3 Sent: 0



Km: 72.45 Tipo: 3 Sent: 0



Km: 157.00 Tipo: 1 Sent: 0